

# 2000 TAYLOR

FOR SALE OR LEASE  
OFFICE / R&D SPACE

2000 TAYLOR ROAD, AUBURN HILLS, MI



VIEW VIDEO TOUR 

**NEWMARK**

**Larry Emmons**  
larry.emmons@nmrk.com  
248-447-2707

**JP Champine**  
jp.champine@nmrk.com  
248-357-6596

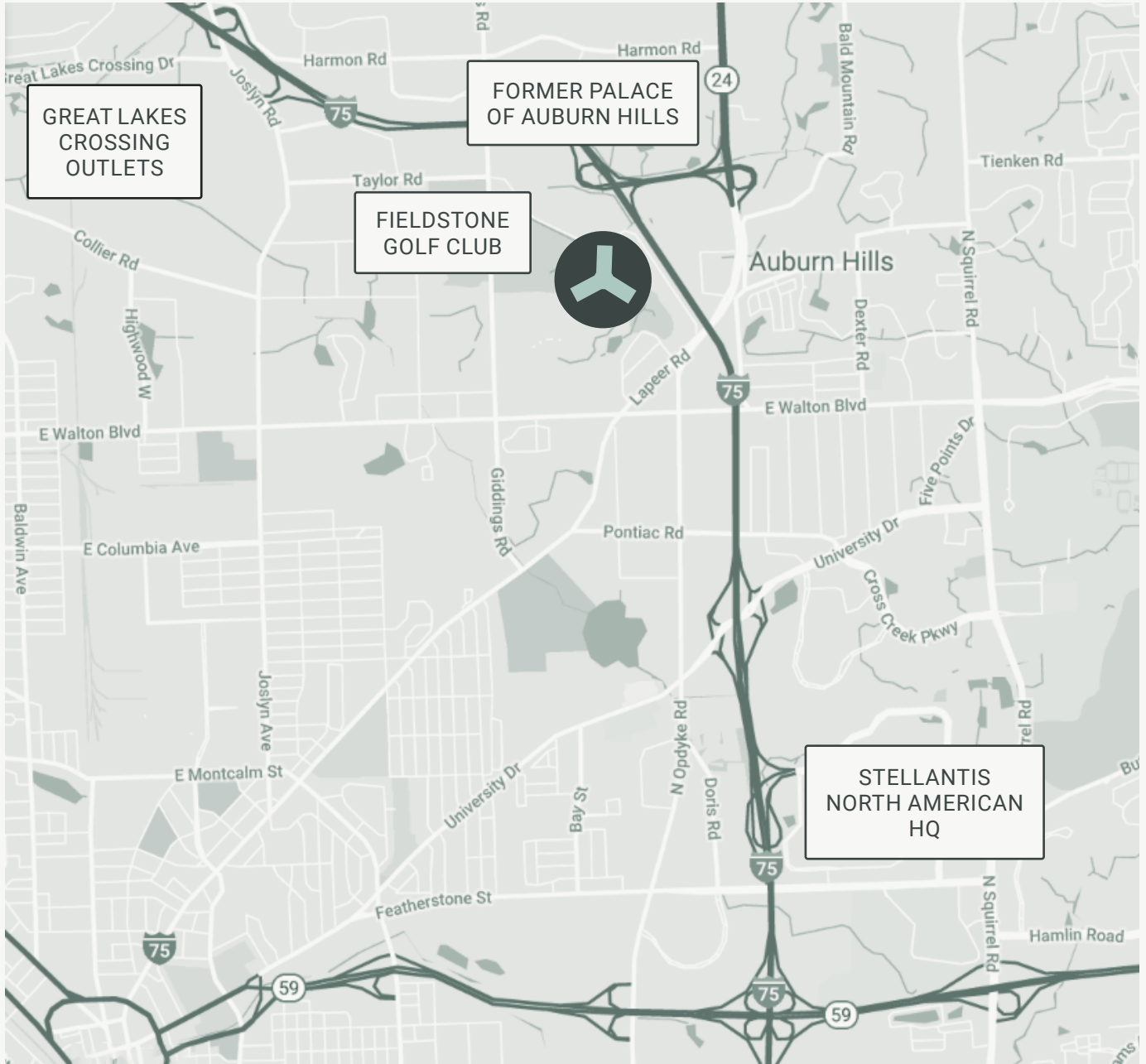


TIME EQUITIES INC.



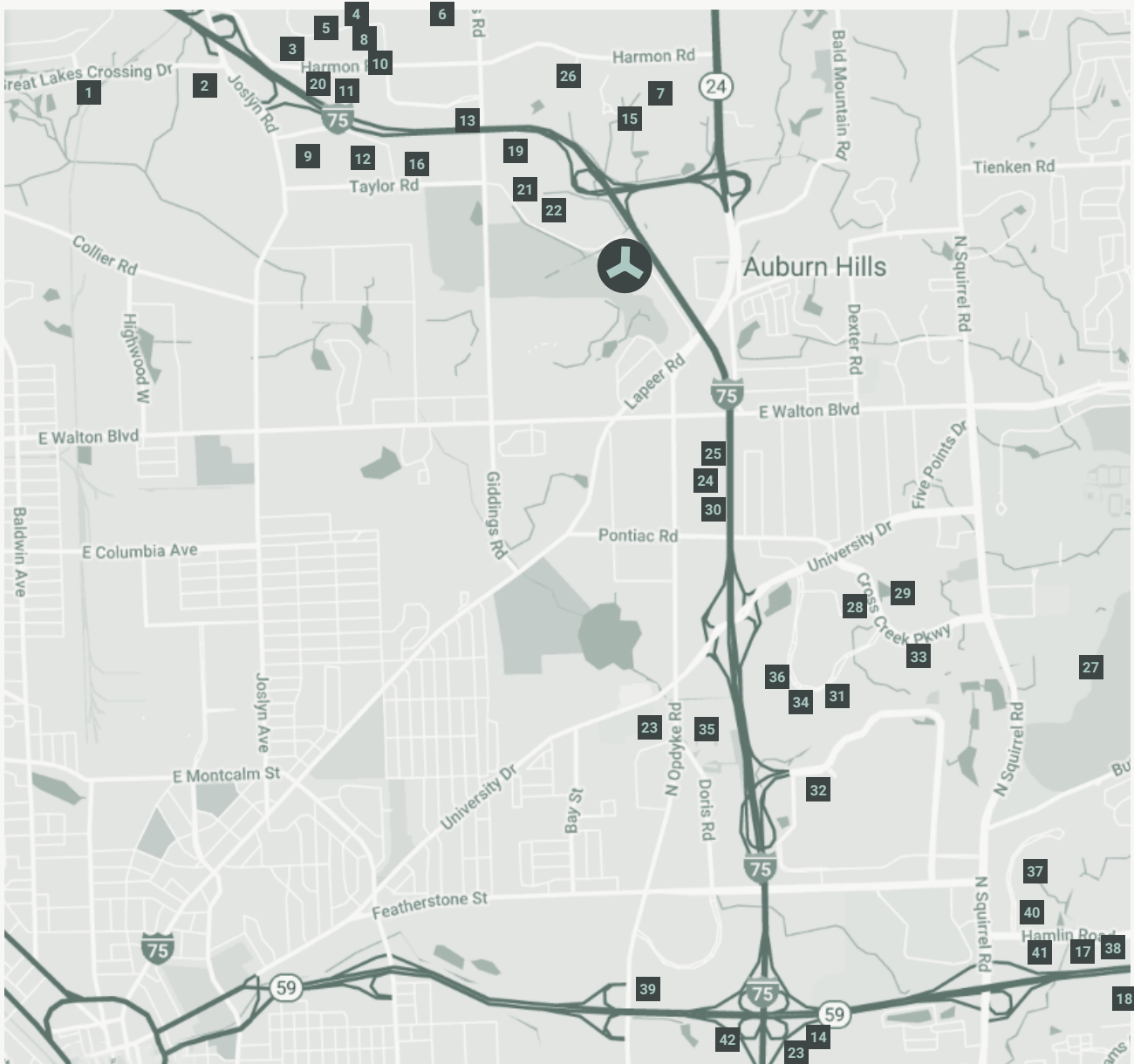
- Entire building (180,142 RSF) available for sale as a single user property. Contact listing agents for details.
- Up to 74,261 RSF available immediately, including:
  - Partial 1<sup>st</sup> Floor – 13,809 RSF
  - Entire 2<sup>nd</sup> Floor – 45,889 RSF
  - Partial 4<sup>th</sup> Floor – 14,563 RSF
- Lobby renovation and state-of-the-art building automation system
- EV charging stations installed
- Emergency full building generator
- Class A building
- Excellent I-75 signage/branding opportunity
- Quick access to I-75 and M-59
- Flexible technology and research zoning





# 2000 TAYLOR

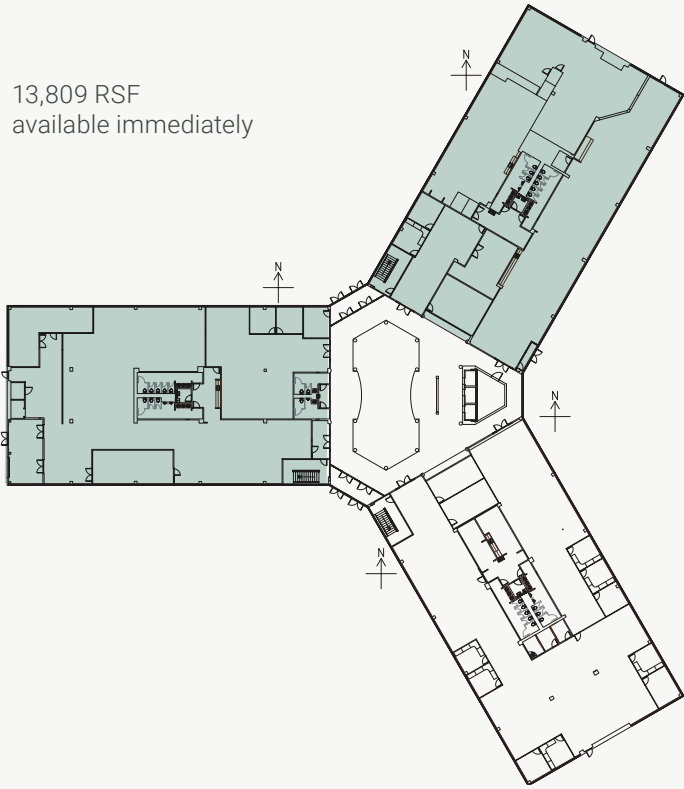
# NEIGHBOR MAP



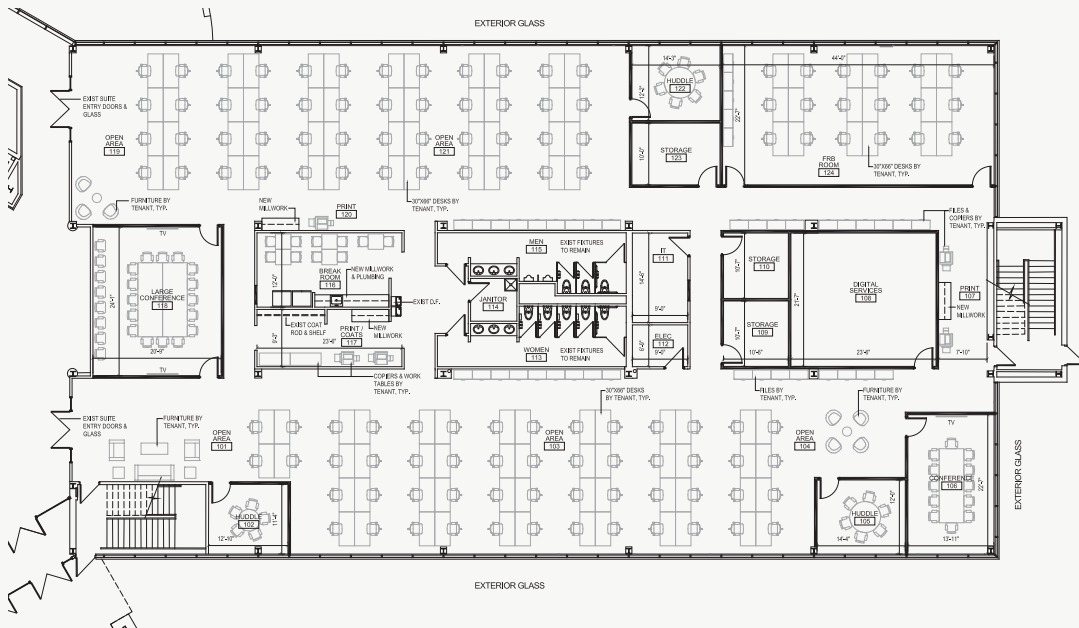
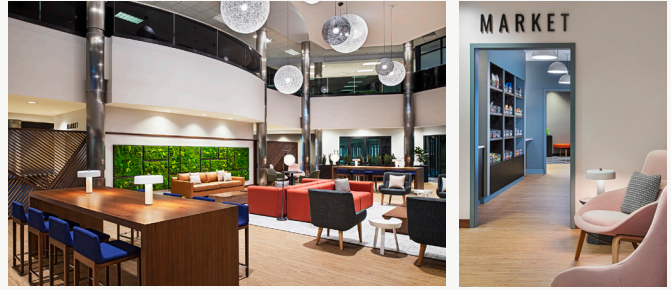
- |                                       |   |                              |                           |
|---------------------------------------|---|------------------------------|---------------------------|
| <b>1</b> Great Lakes Crossing Outlets | <b>13</b> Valeo                           | <b>24</b> GKN Driveline      | <b>35</b> Nexteer         |
| <b>2</b> Topgolf                      | <b>14</b> Mahindra                        | <b>25</b> TFS                | <b>36</b> Henniges        |
| <b>3</b> Continental AG               | <b>15</b> Borg Warner                     | <b>26</b> Brose              | <b>37</b> Fanuc           |
| <b>4</b> ABB                          | <b>16</b> AM General                      | <b>27</b> Oakland University | <b>38</b> Molex           |
| <b>5</b> Dana                         | <b>17</b> Alpine Electronics of America   | <b>28</b> Hutchinson         | <b>39</b> Cooper Standard |
| <b>6</b> Roush                        | <b>18</b> Lear                            | <b>29</b> Dura               | <b>40</b> Comerica        |
| <b>7</b> Guardian Industries          | <b>19</b> George P. Johnson               | <b>30</b> Martinrea          | <b>41</b> Volkswagen      |
| <b>8</b> Green Optics                 | <b>20</b> Continental Structural Plastics | <b>31</b> Incoe              | <b>42</b> XPO Logistics   |
| <b>9</b> Wabco                        | <b>21</b> Legacy Industries               | <b>32</b> Stellantis         |                           |
| <b>10</b> Samsung                     | <b>22</b> AAM                             | <b>33</b> Atlas Copco        |                           |
| <b>11</b> Dupont                      | <b>23</b> TI Automotive                   | <b>34</b> Faurecia           |                           |
| <b>12</b> Autoliv Americas            |   |                              |                           |

# 2000 TAYLOR | FIRST FLOOR

13,809 RSF  
available immediately

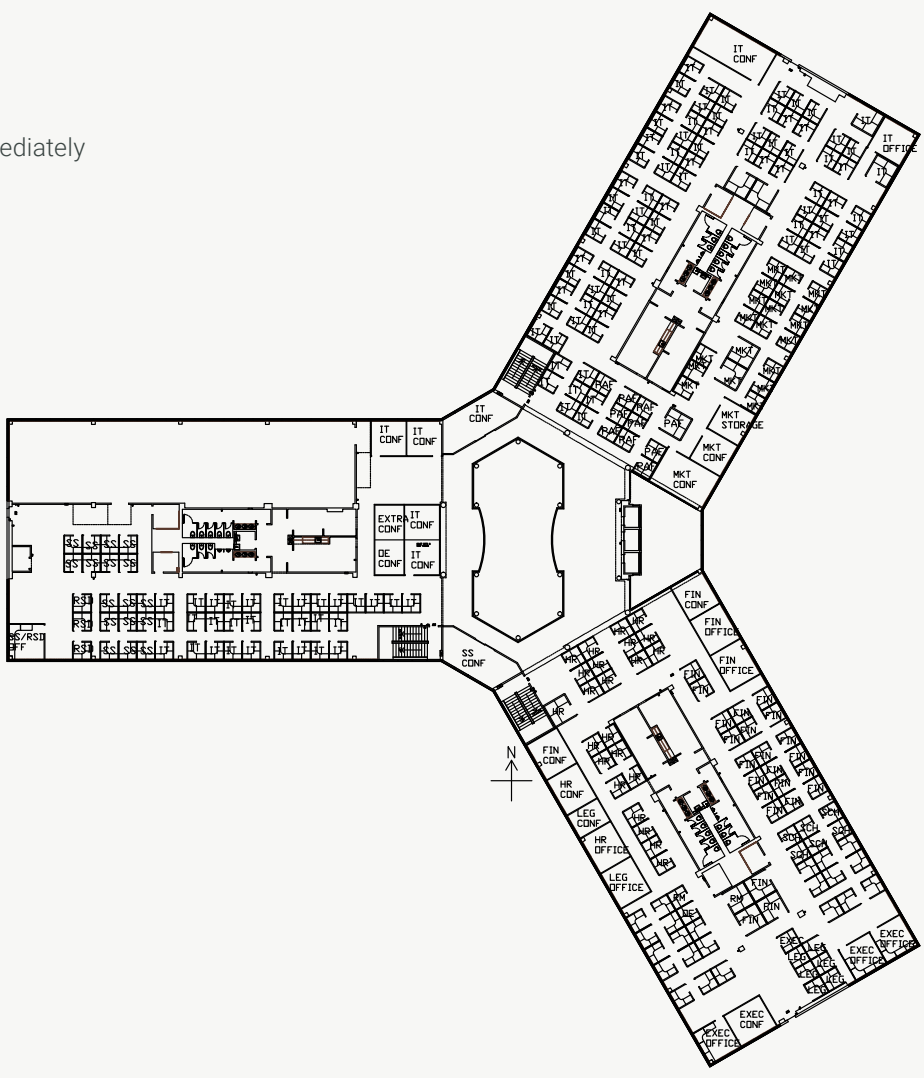


SAMPLE TEST FIT  
Suite 1-3  
13,809 RSF



# 2000 TAYLOR | SECOND FLOOR

45,889 RSF  
available immediately



14,563 RSF  
available immediately

EXISTING  
CONDITIONS

