



# Sunset North

3120 139th Avenue  
Southeast

## Space availability summary

WeWork @ 3120 139th Avenue Southeast  
Bellevue, WA

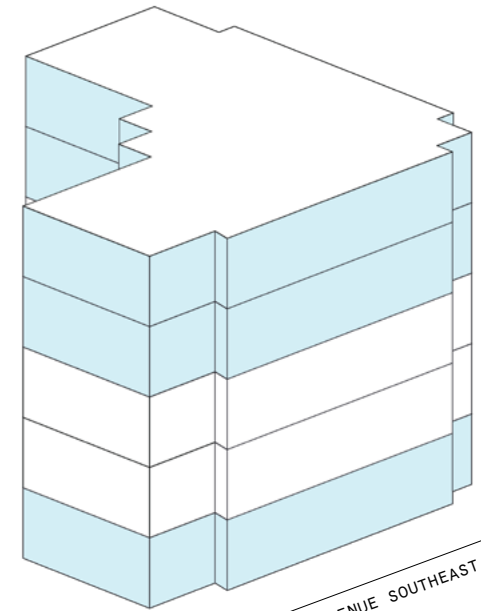
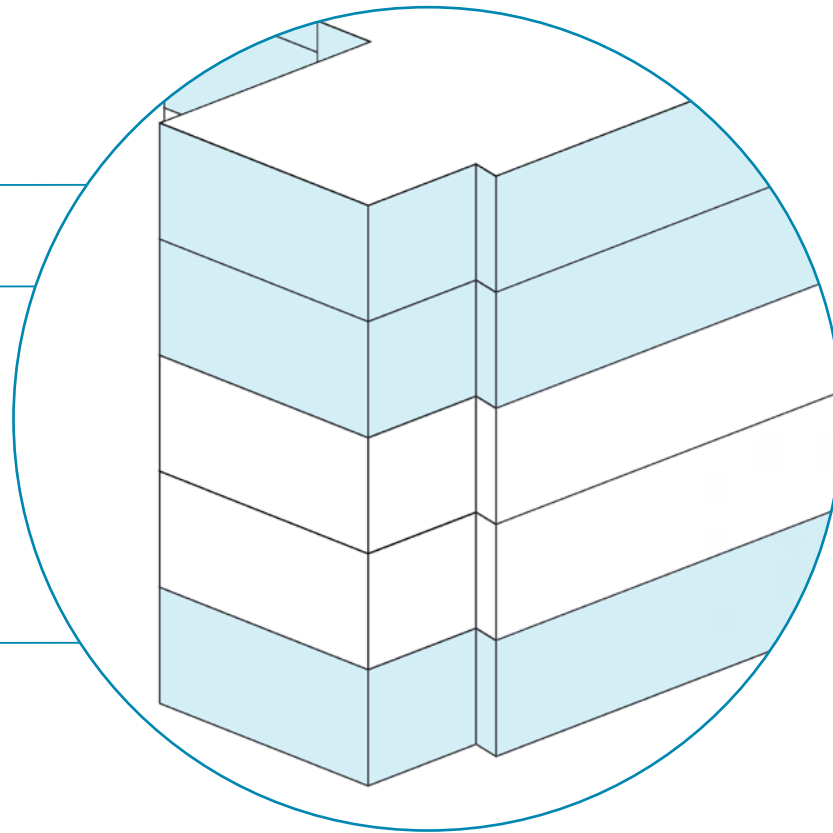
**wework**

[VIEW VIRTUAL TOUR](#)

5th Floor 33,067 RSF

4th Floor 33,024 RSF

1st Floor 12,212 RSF



139TH AVENUE SOUTHEAST

---

**78,303 RSF**

TOTAL WEWORK RSF

---

## Sunset North

At a glance

---

---

Brand new suites offering flexible size & term

---

**5**

TOTAL BUILDING FLOORS

---

Dedicated, private  
suites available from  
96 to 6,625 RSF

---

Move-in ready suites  
furnished & wired

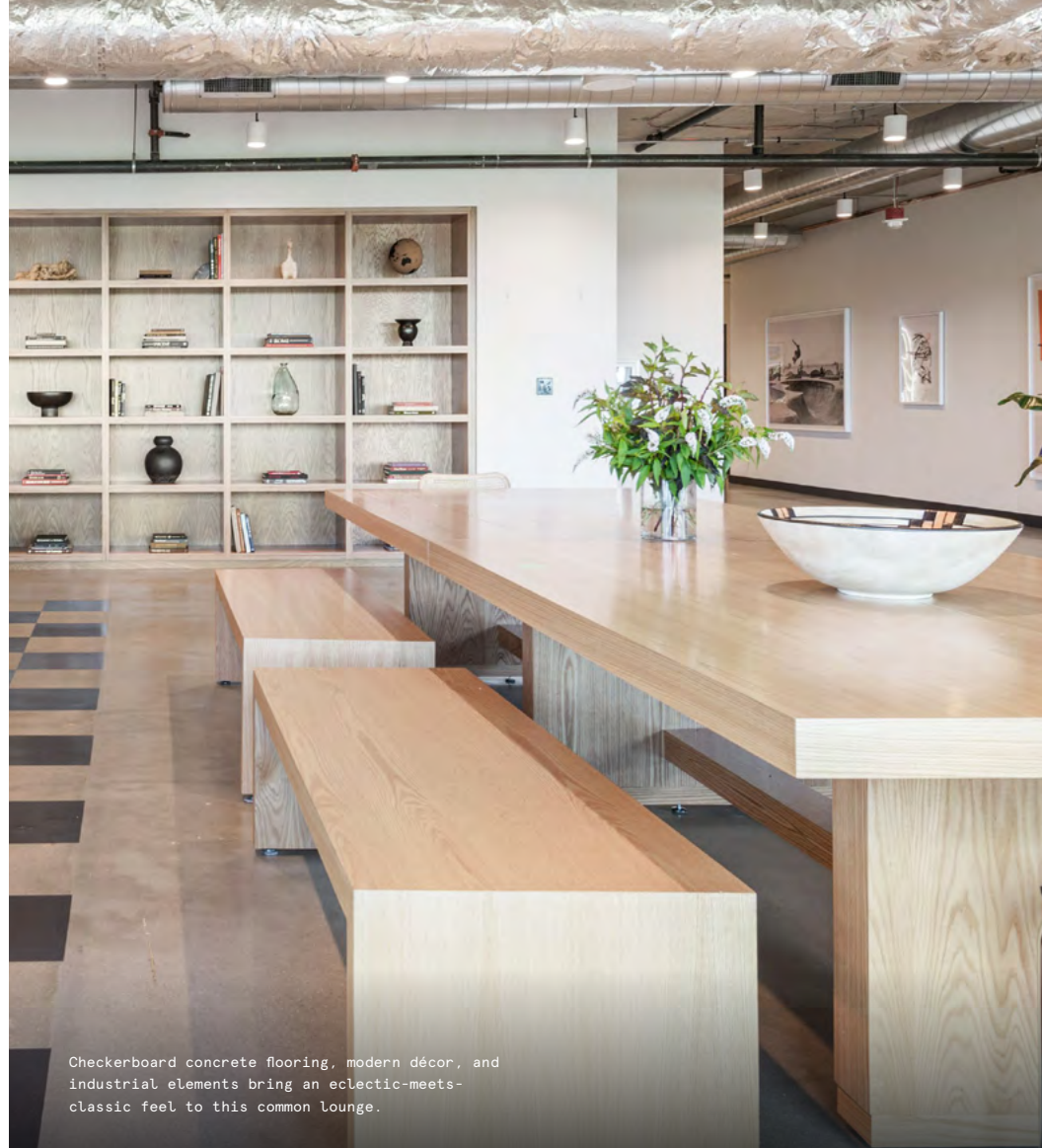
---

**155,327**

TOTAL BUILDING SQ FT



Sweeping views serve as an impressive backdrop for this shared lounge, complete with pops of bright color and bold patterns.



Checkerboard concrete flooring, modern décor, and industrial elements bring an eclectic-meets-classic feel to this common lounge.

## Fresh, modern workspace with sweeping views

---

Sunset North is a Class-A building in Bellevue, Washington. Located in a tree-lined corporate corridor in the shadow of Bellevue College, this building has easy access to both downtown Bellevue and downtown Seattle. WeWork's three floors in this modern space feature sleek private offices, unique meeting rooms, and sun-soaked lounges with unobstructed views of the city skylines and Olympic Mountains.



No area's gone overlooked—rich velvet upholstery and a woven pouf ottoman give this lounge corner a coziness all its own.

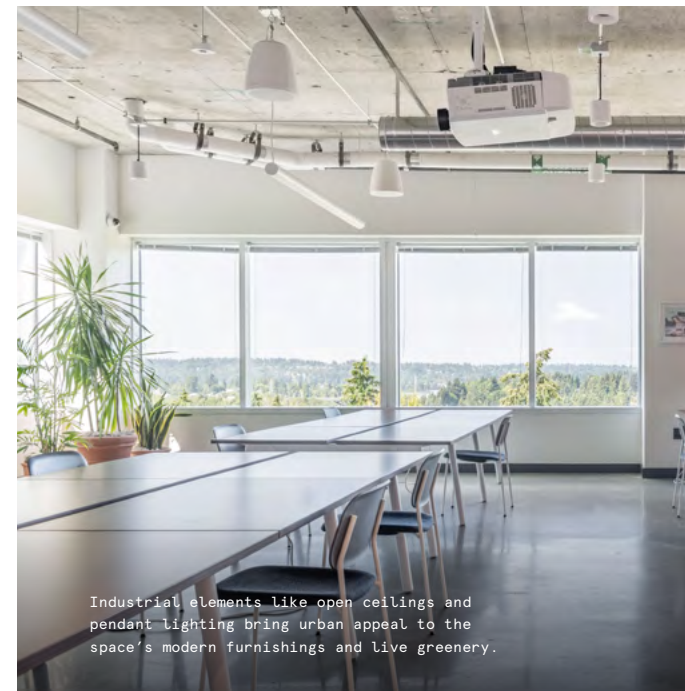
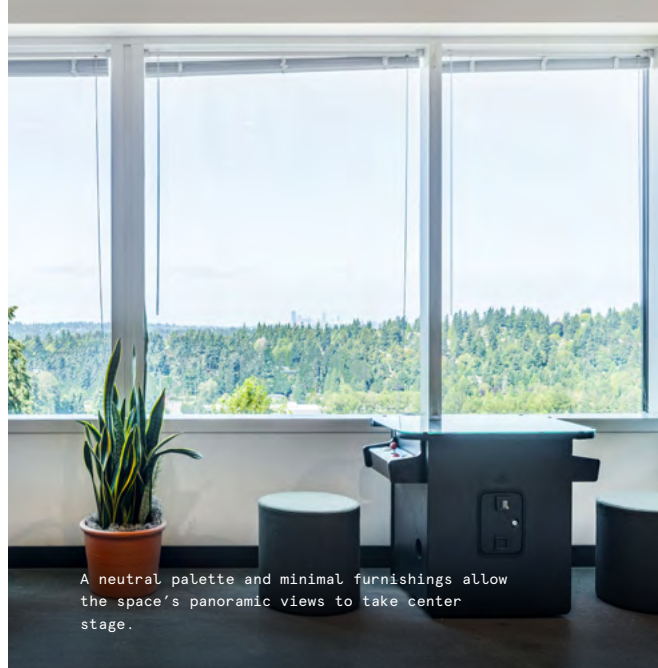


Two-toned bench seating and abstract custom wallpaper feature in this seating nook, complete with custom artwork and a terrazzo tabletop.

# Light, bright, and unexpectedly playful

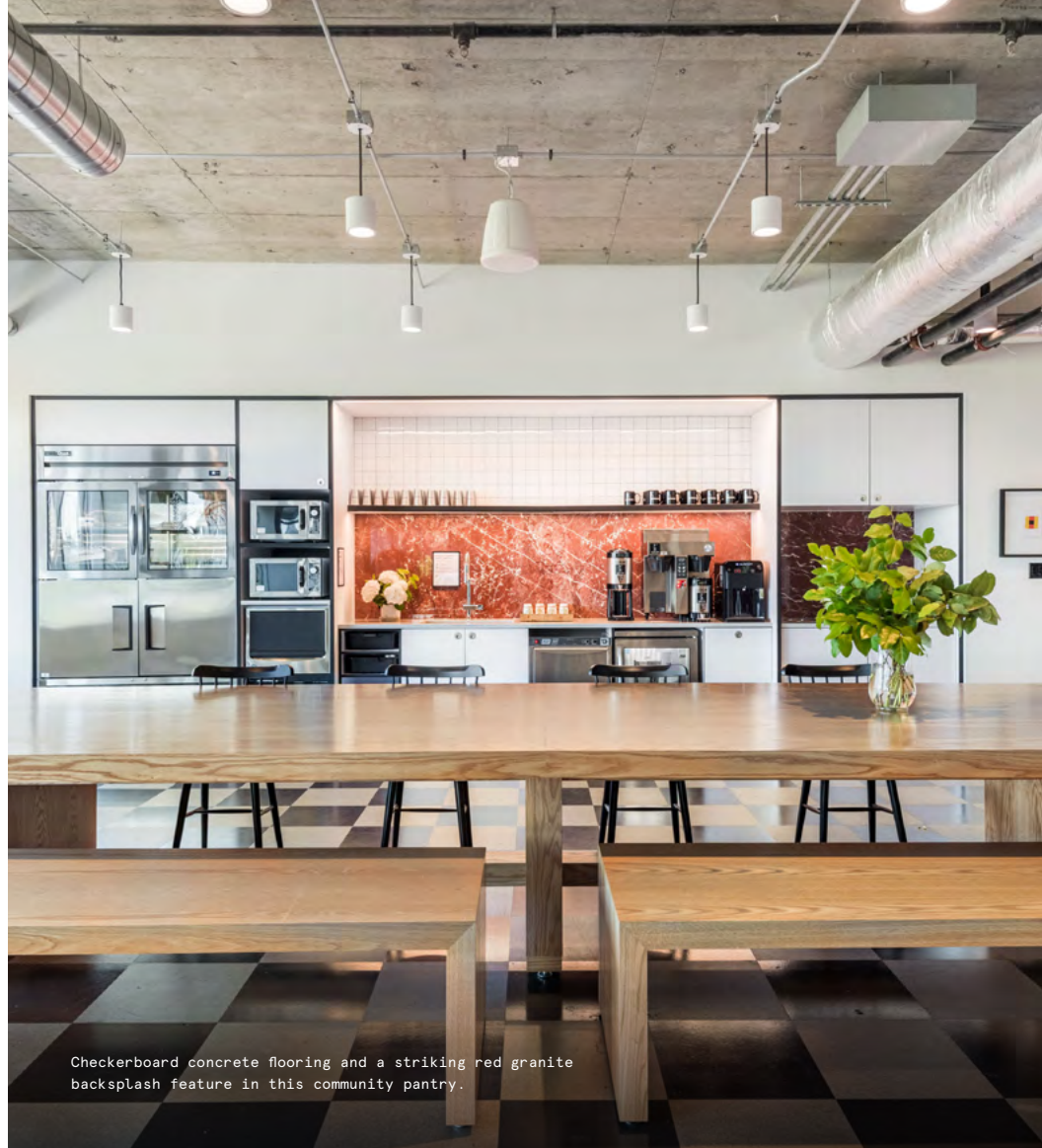
With its oversized windows, polished concrete floors, and open floor plan, this building's airy exterior serves as the perfect backdrop for thoughtful décor touches and pops of bright color. The space's refined approach is punctuated by whimsical motifs and playful design moments—most notably, a rock climbing wall features behind the Community Desk.

- The overall color palette is comprised of soft, neutral tones, creating a light, airy space accented with pops of color in furniture, fabrics, and printed wallpapers
- The Community Desk features intricate string-like millwork and a full-height climbing wall, paying homage to the local favorite pastime and bringing a fun, laid-back vibe to the space
- The space includes rich textiles and upholstery to bring warmth and texture to the common lounges' more industrial elements





The Community Desk's full-height rock climbing wall welcomes members and guests to this hip, playful space.



Checkerboard concrete flooring and a striking red granite backsplash feature in this community pantry.

## On-site amenities

---

- 24/7 security
- Electronic keycard access
- Business-class printers
- Stocked pantry
- On-site staff
- Meeting rooms
- Mother's room
- Phone booths
- Wellness/meditation room
- Event space
- Fitness center
- Recreational games
- Locker room with showers
- Gender-neutral restrooms
- Dog-friendly spaces
- Bicycle storage
- On-site parking
- Access to car charging stations
- Emergency back-up power
- Supplemental HVAC and electric

# Building specifications

---



## Hours of operation

---

Monday - Friday: 6am-6pm



## Security

---

24/7 attended lobby



## HVAC

---

Monday - Friday: 6am-6pm  
Saturday: 8am-1pm



## Building history

---

Built in 2000



## Elevators

---

2 passenger elevators  
1 freight elevator



## Fire strategy

---

Fully-sprinklered floors



## Building size

---

5 stories  
155,327 SF



## Certifications

---

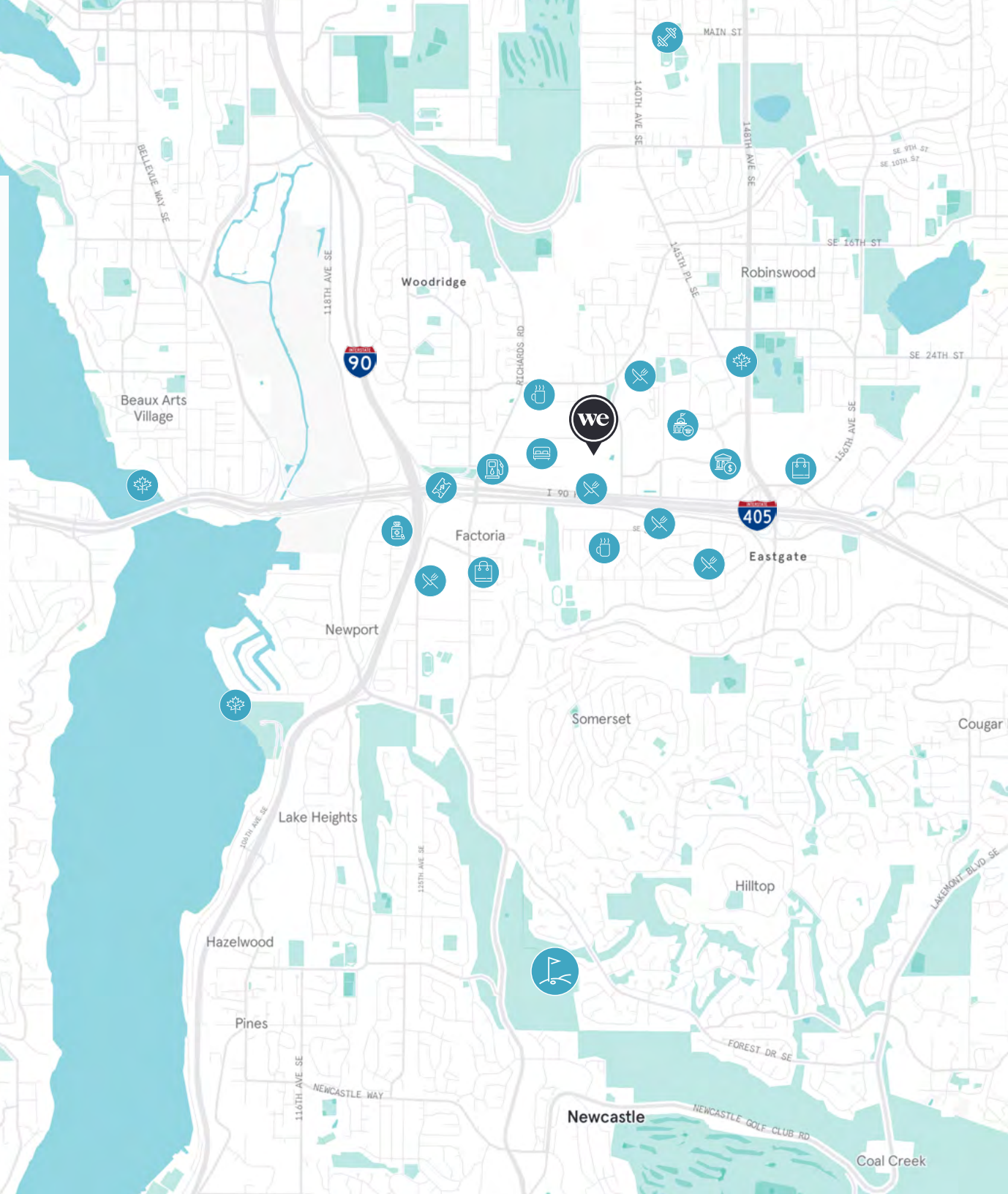
LEED Platinum certified  
Energy Star certified

# Access to the heart of Seattle

With its proximity to Seattle and Washington's breathtaking landscapes, Sunset North lets members experience the best of city living and the PNW's lush natural splendor all in one. Members are just a few minutes from downtown Bellevue, Bellevue College, and Robinswood Community Park, allowing them to explore any of the nearby coffee houses, restaurants, and boutique retailers with ease. Plus, commuting is a breeze, with on-site parking and easy access to I-90 and I-405.

## Distance to WeWork

Eastgate Park and Ride	 Walk	6 min
405 Highway	 Drive	4 min
I-90 Highway	 Drive	3 min
Seattle-Tacoma International Airport	 Drive	25 min



# 1st Floor

12,212 RSF

1

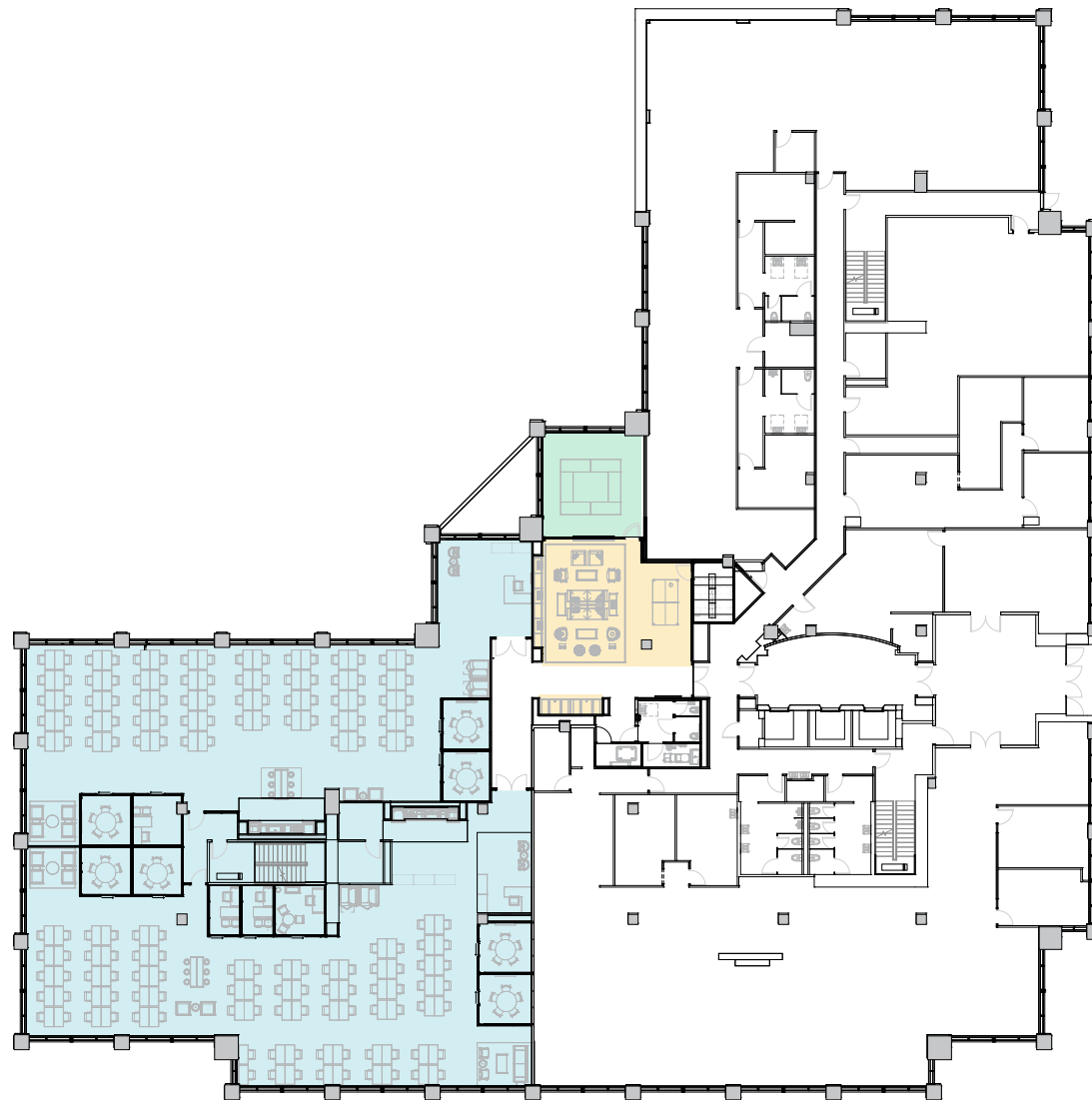
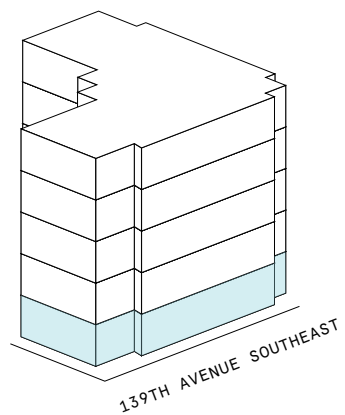
MEETING ROOM(S)

2

SHARED WORKSPACE(S)

## LEGEND

- MEETING ROOM
- SHARED WORKSPACE
- DEDICATED SPACE



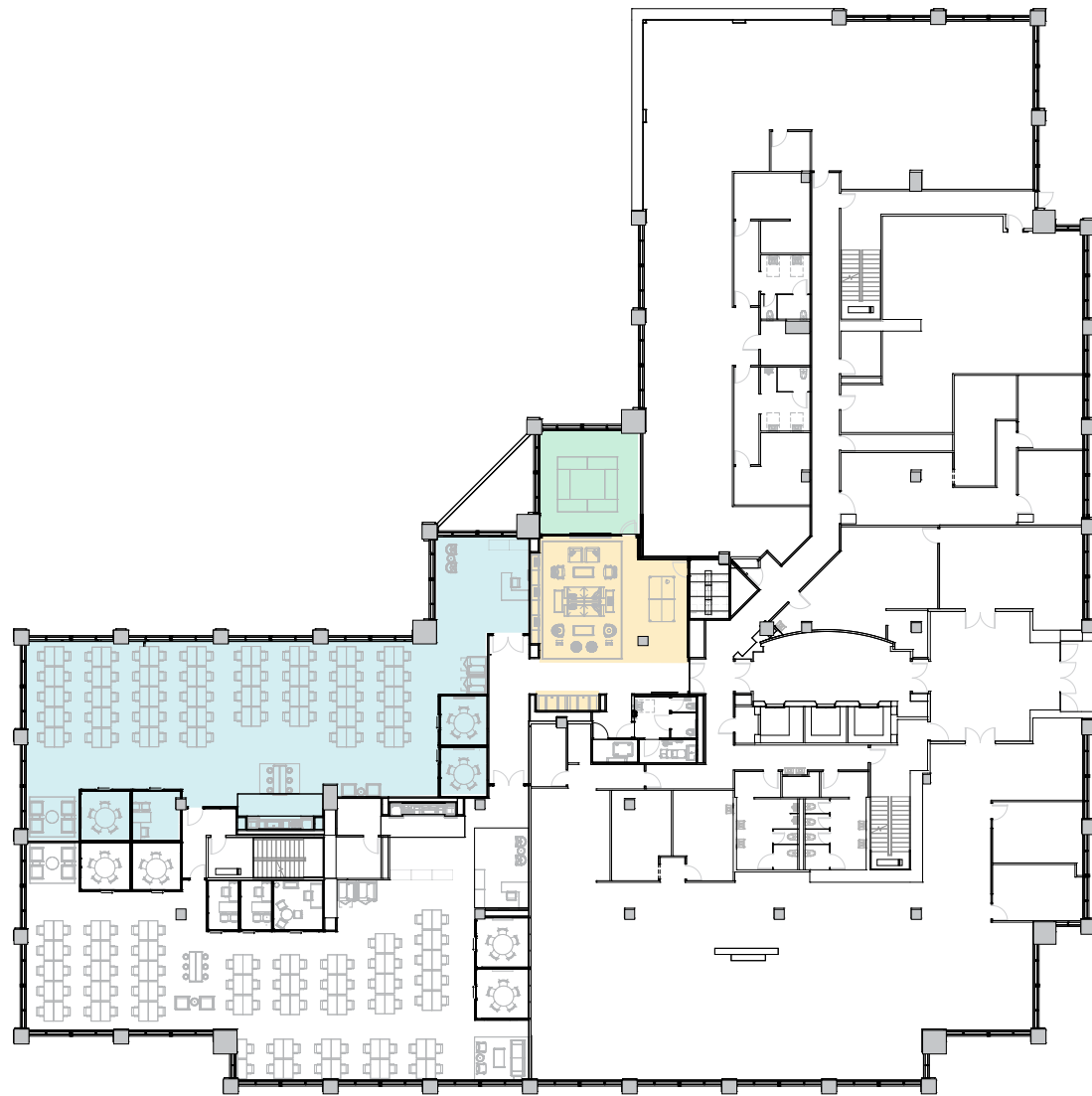
# 1st Floor

12,212 RSF

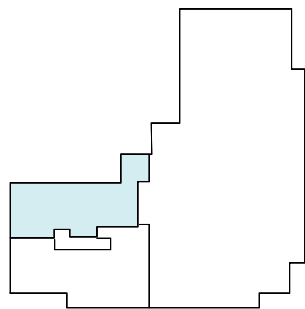
5,587 RSF Suite 01W101

3  
MEETING ROOM(S)

1  
PRIVATE OFFICE(S)



139TH AVENUE SOUTHEAST



139TH AVENUE SOUTHEAST

# Suite 01W101

## 1st Floor

3

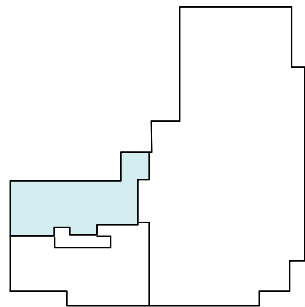
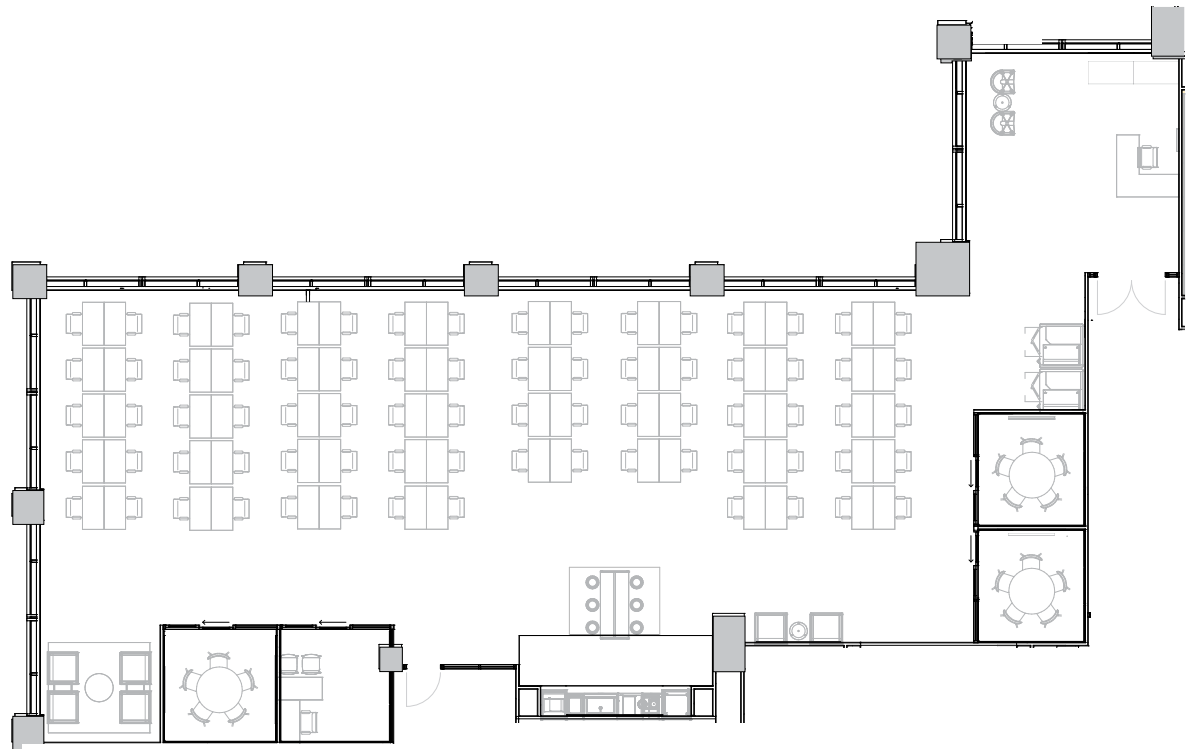
MEETING ROOM(S)

1

PRIVATE OFFICE(S)

5,587 RSF

RENTABLE AREA



139TH AVENUE SOUTHEAST

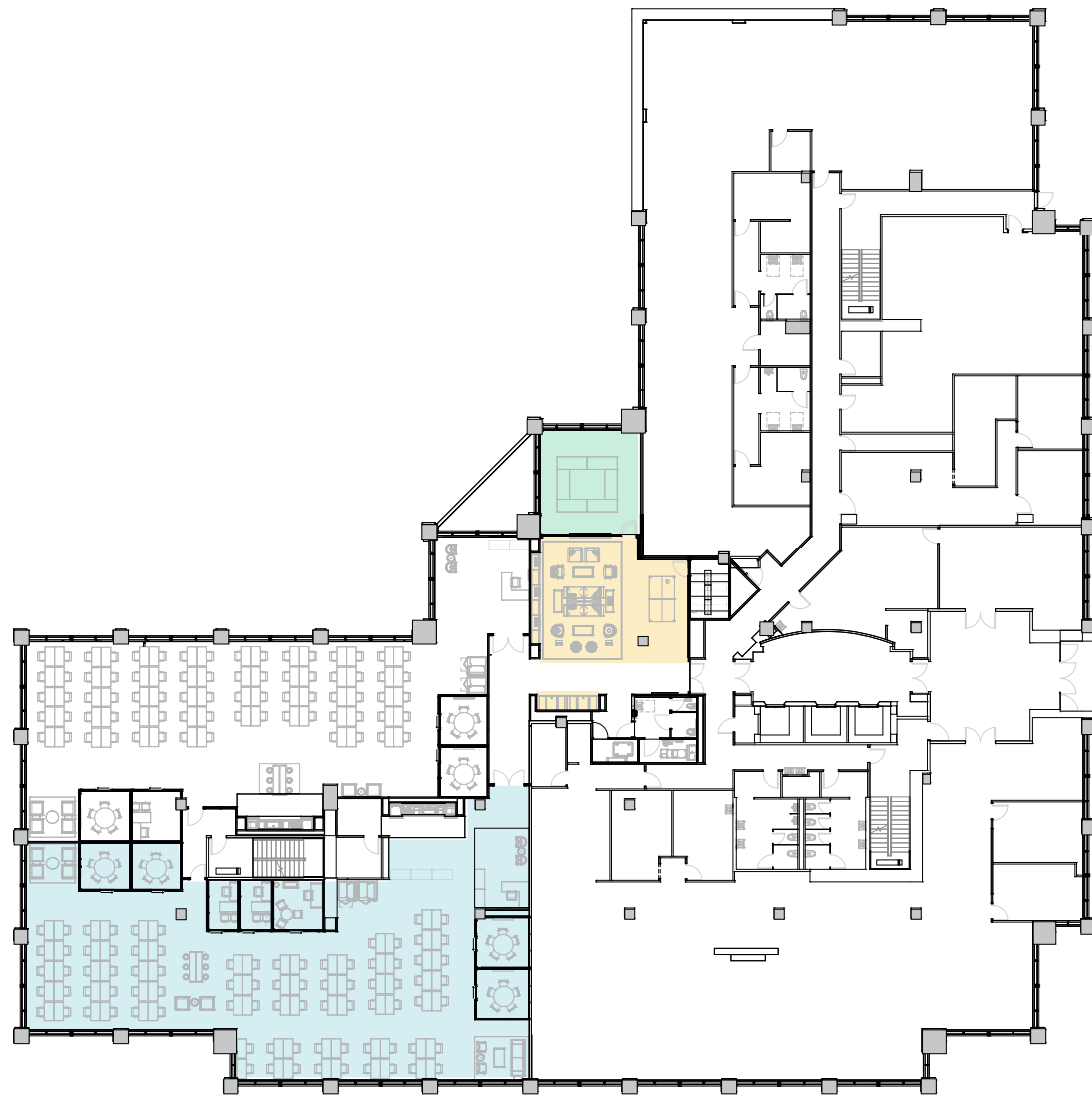
# 1st Floor

12,212 RSF

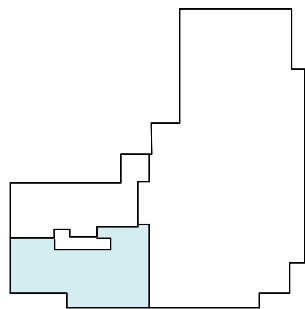
6,625 RSF Suite 01W102

4  
MEETING ROOM(S)

3  
PRIVATE OFFICE(S)



139TH AVENUE SOUTHEAST

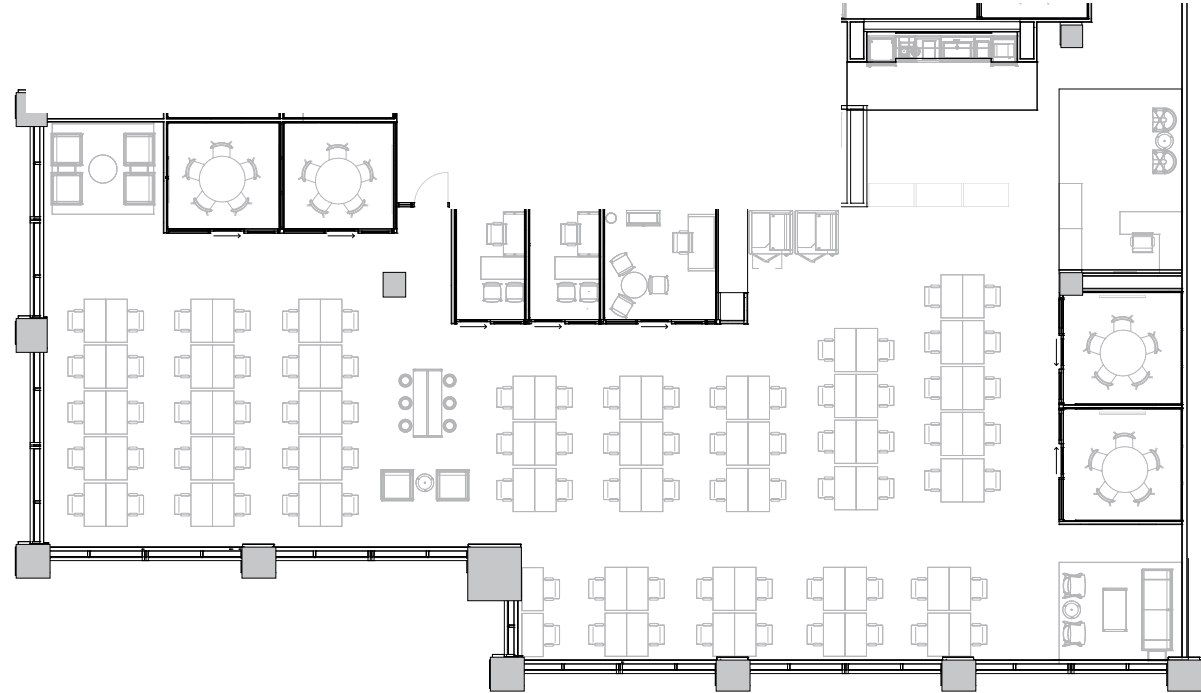


139TH AVENUE SOUTHEAST

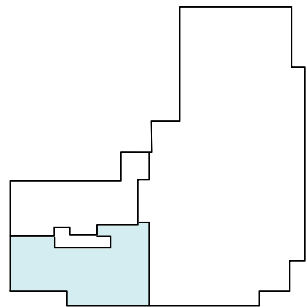
# Suite 01W102

## 1st Floor

- 4 MEETING ROOM(S)
- 3 PRIVATE OFFICE(S)



6,625 RSF  
RENTABLE AREA



139TH AVENUE SOUTHEAST

# 4th Floor

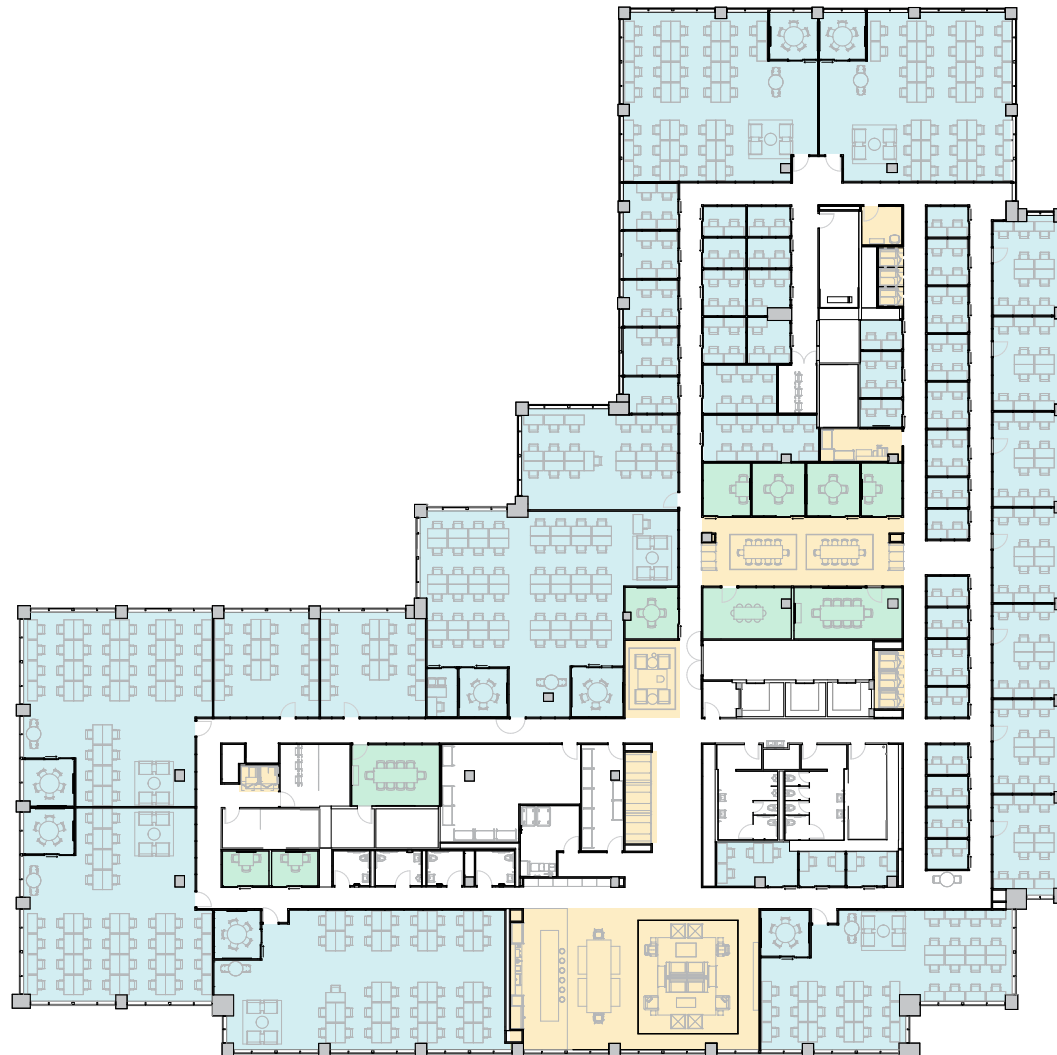
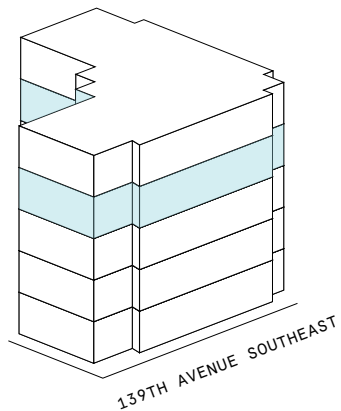
33,024 RSF

10  
MEETING ROOM(S)

8  
SHARED WORKSPACE(S)

## LEGEND

- MEETING ROOM
- SHARED WORKSPACE
- DEDICATED SPACE



139TH AVENUE SOUTHEAST



# 4th Floor

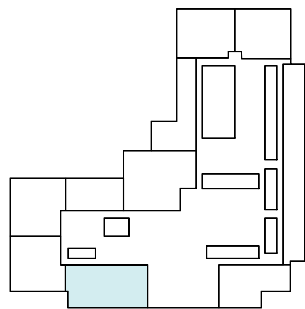
33,024 RSF

3,289 RSF Suite 04W101

1  
MEETING ROOM(S)



139TH AVENUE SOUTHEAST



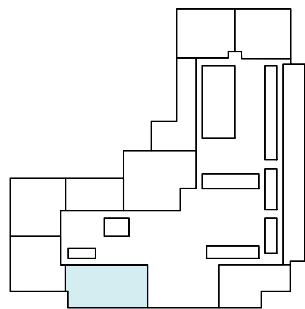
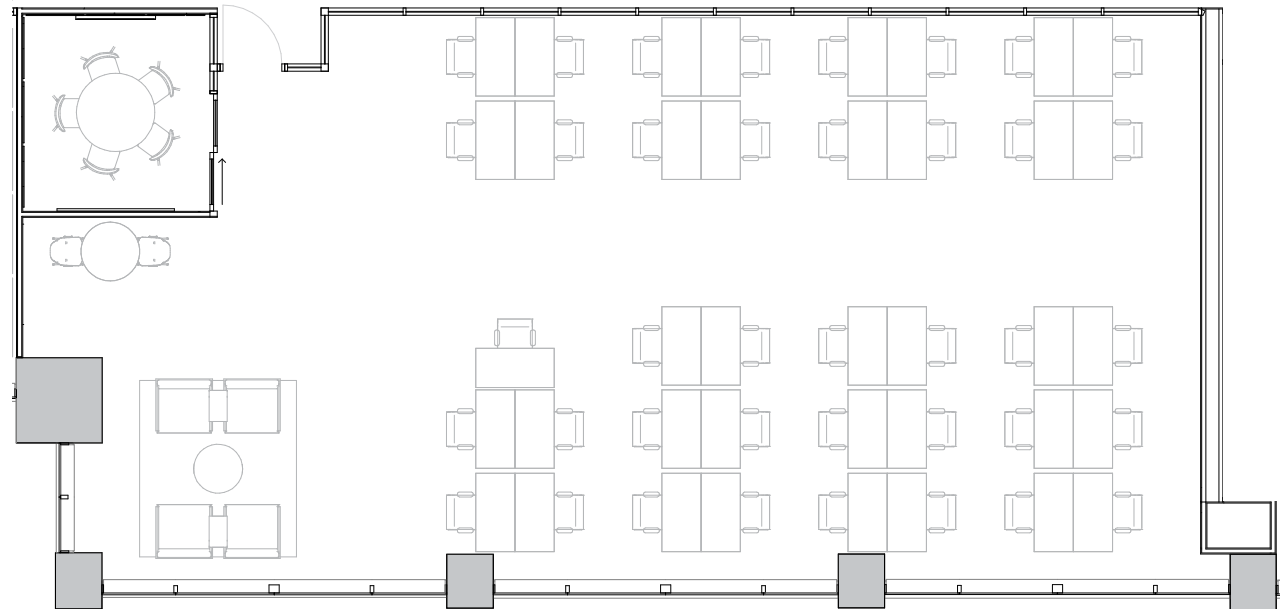
139TH AVENUE SOUTHEAST

# Suite 04W101

4th Floor

1  
MEETING ROOM(S)

3,289 RSF  
RENTABLE AREA



139TH AVENUE SOUTHEAST

# 4th Floor

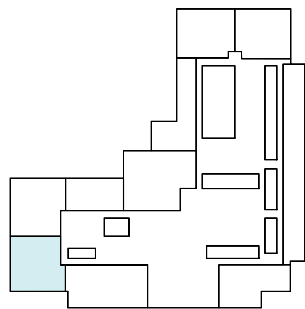
33,024 RSF

2,877 RSF Suite 04W102

1  
MEETING ROOM(S)



139TH AVENUE SOUTHEAST



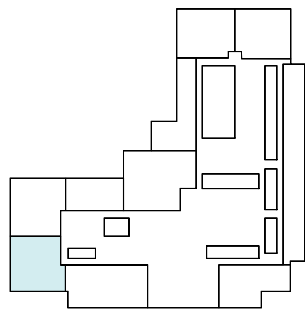
139TH AVENUE SOUTHEAST

# Suite 04W102

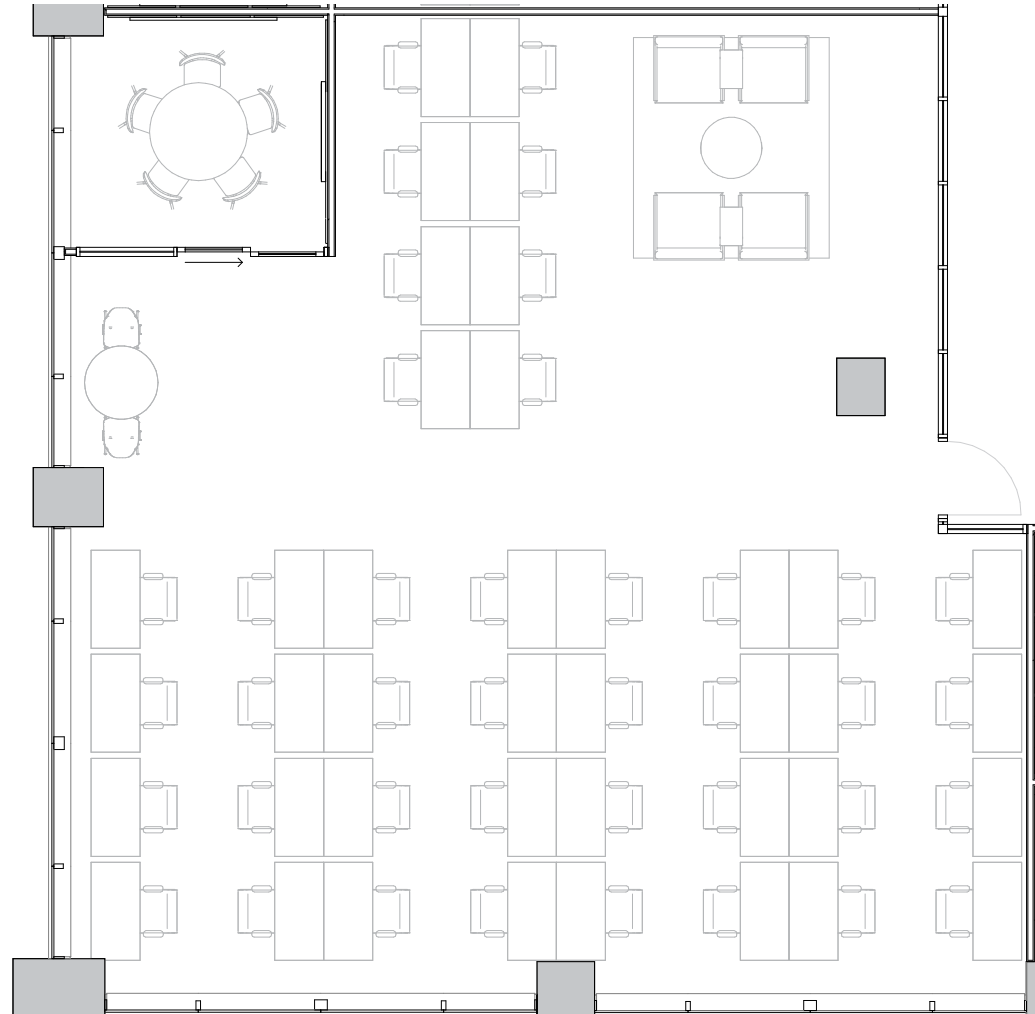
## 4th Floor

1  
MEETING ROOM(S)

2,877 RSF  
RENTABLE AREA



139TH AVENUE SOUTHEAST



# 4th Floor

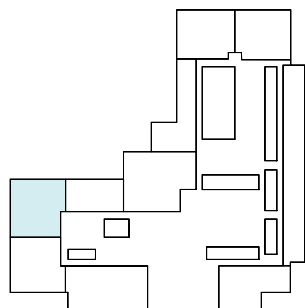
33,024 RSF

2,904 RSF Suite 04W103

1  
MEETING ROOM(S)



139TH AVENUE SOUTHEAST



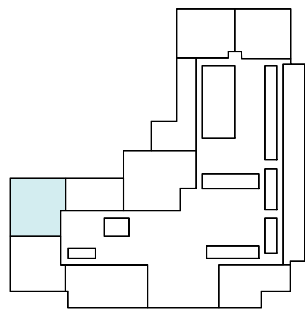
139TH AVENUE SOUTHEAST

# Suite 04W103

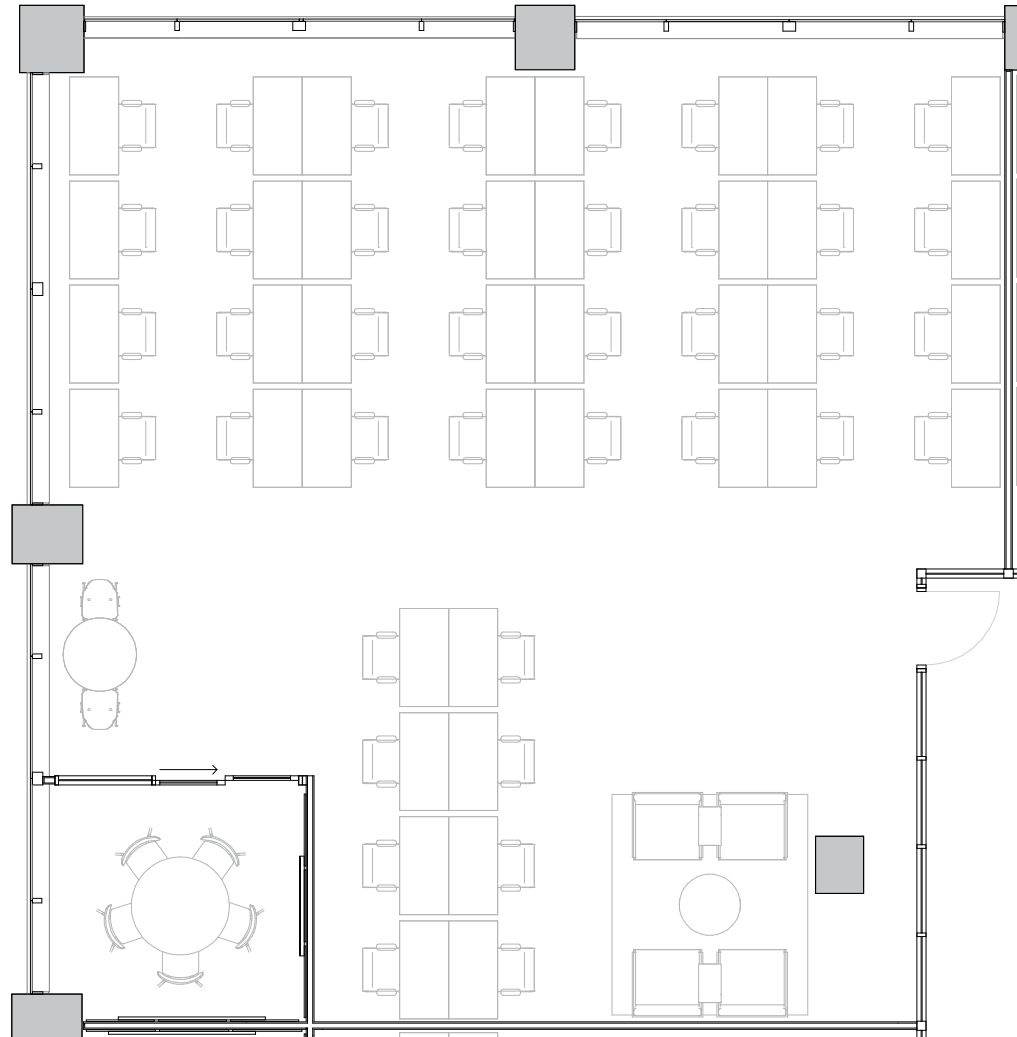
## 4th Floor

1  
MEETING ROOM(S)

2,904 RSF  
RENTABLE AREA



139TH AVENUE SOUTHEAST



# 4th Floor

33,024 RSF

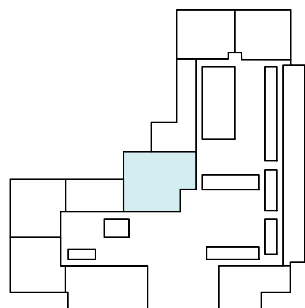
3,675 RSF Suite 04W106

2  
MEETING ROOM(S)

1  
PRIVATE OFFICE(S)



139TH AVENUE SOUTHEAST



139TH AVENUE SOUTHEAST

# Suite 04W106

## 4th Floor

2

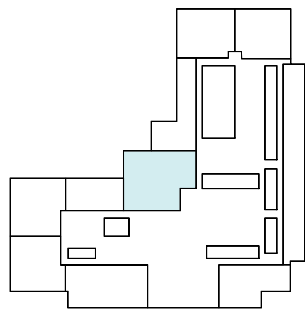
MEETING ROOM(S)

1

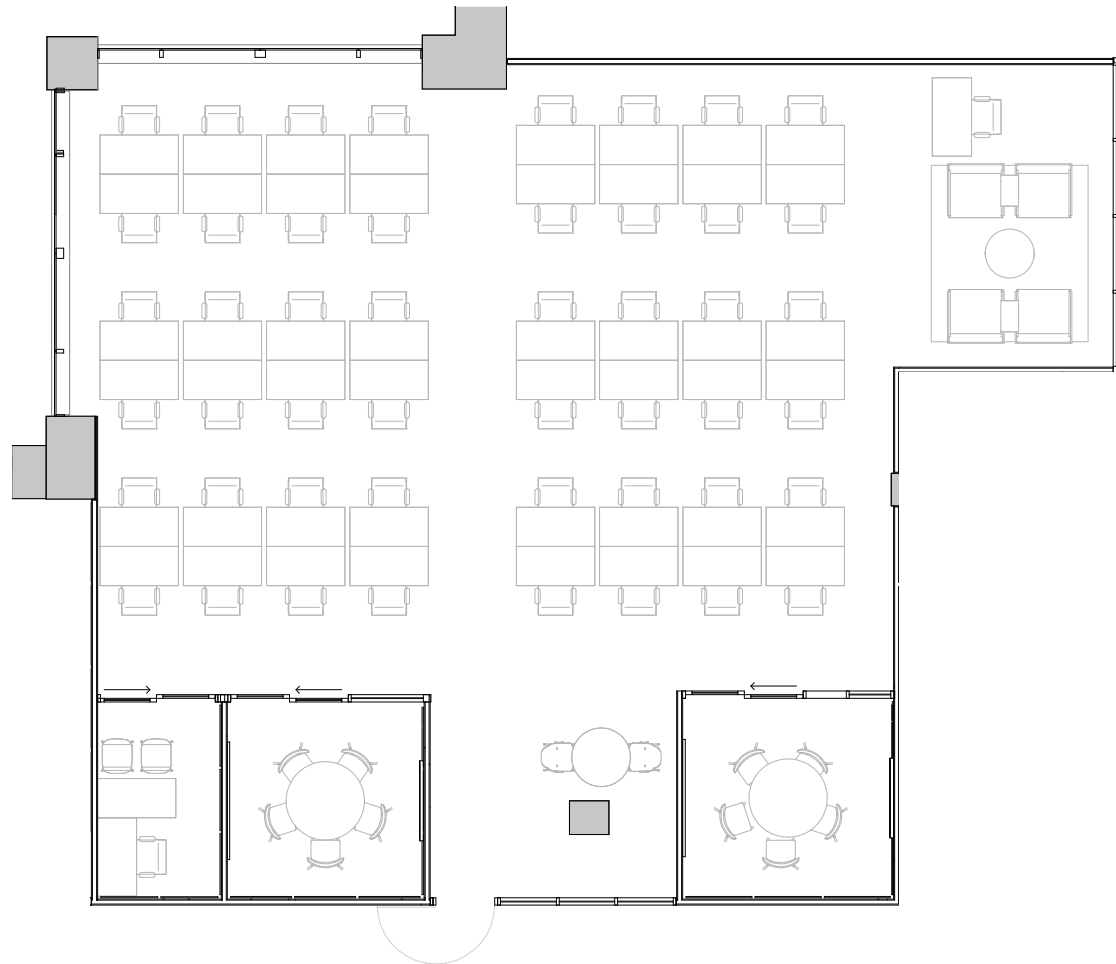
PRIVATE OFFICE(S)

3,675 RSF

RENTABLE AREA



139TH AVENUE SOUTHEAST



# 4th Floor

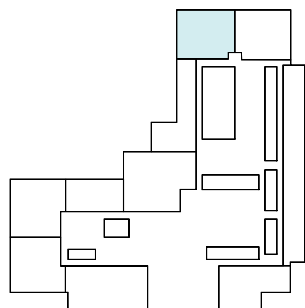
33,024 RSF

2,661 RSF Suite 04W123

1  
MEETING ROOM(S)



139TH AVENUE SOUTHEAST



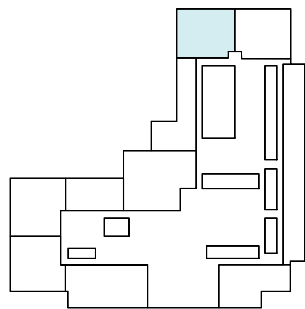
139TH AVENUE SOUTHEAST

# Suite 04W123

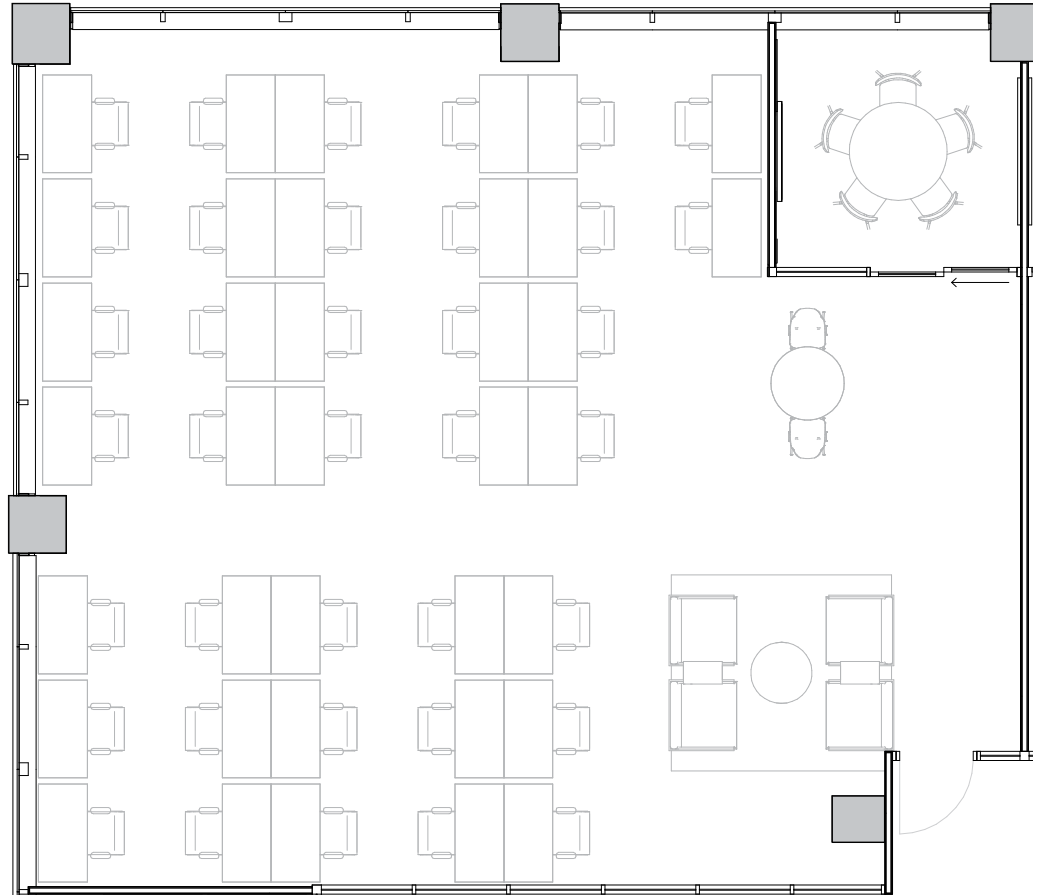
## 4th Floor

1  
MEETING ROOM(S)

2,661 RSF  
RENTABLE AREA



139TH AVENUE SOUTHEAST

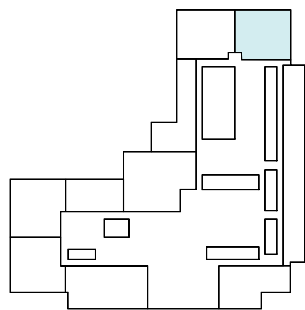


# 4th Floor

33,024 RSF

2,657 RSF Suite 04W124

1  
MEETING ROOM(S)



139TH AVENUE SOUTHEAST

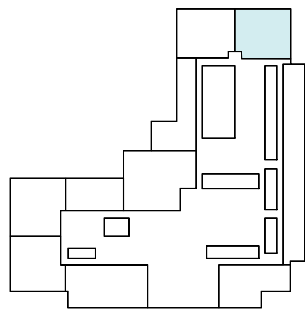
139TH AVENUE SOUTHEAST

# Suite 04W124

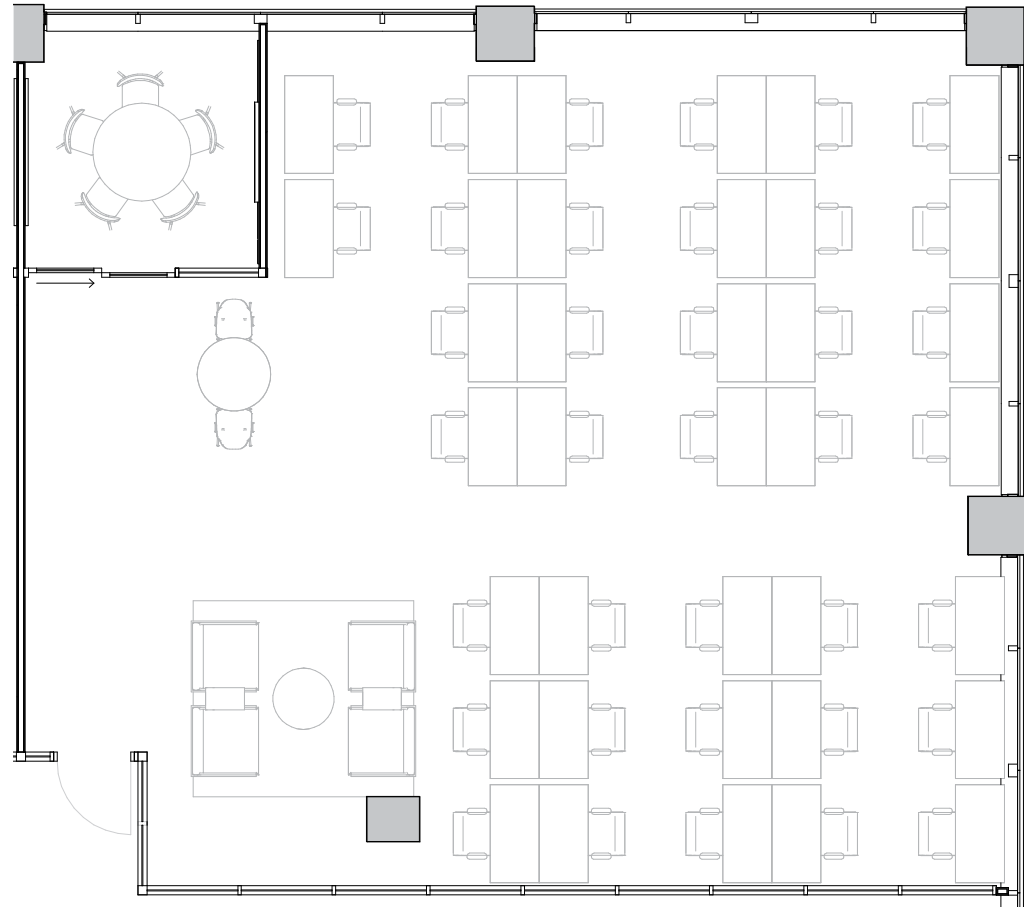
## 4th Floor

1  
MEETING ROOM(S)

2,657 RSF  
RENTABLE AREA



139TH AVENUE SOUTHEAST



# 4th Floor

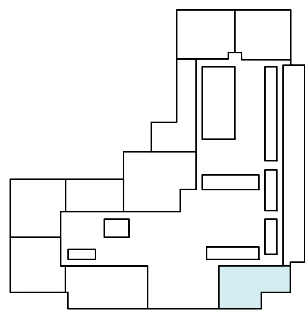
33,024 RSF

2,471 RSF Suite 04W153

1  
MEETING ROOM(S)



139TH AVENUE SOUTHEAST



139TH AVENUE SOUTHEAST

# Suite 04W153

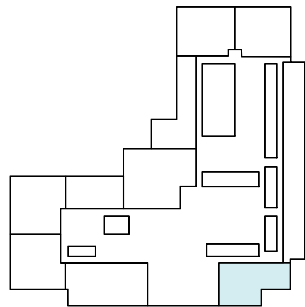
4th Floor

1

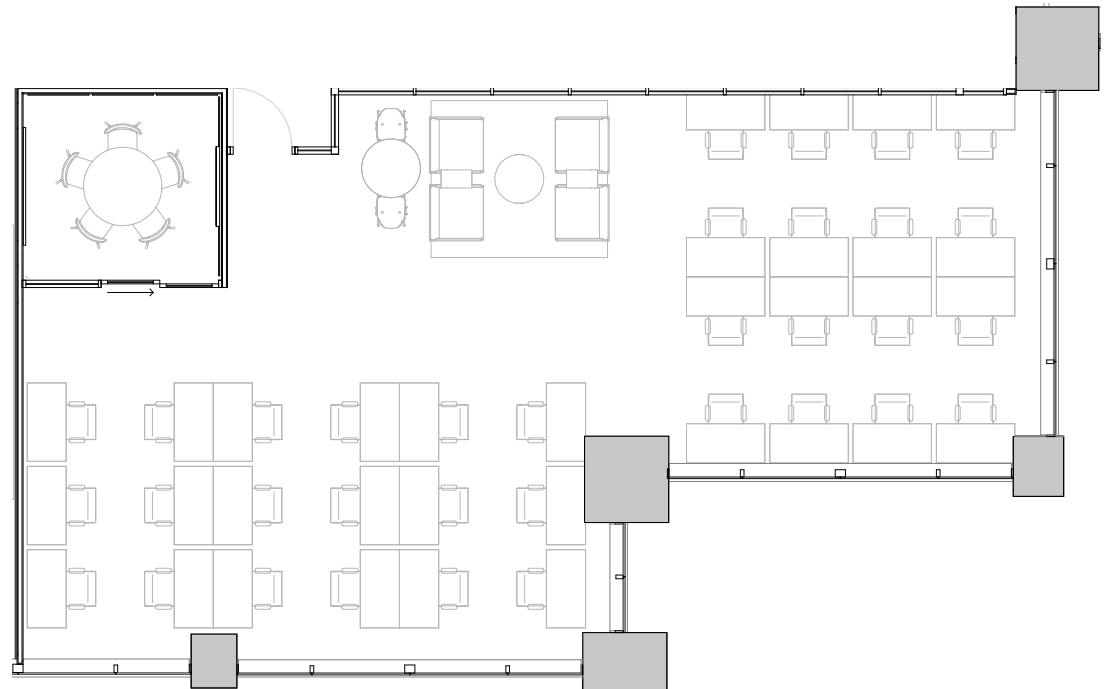
MEETING ROOM(S)

2,471 RSF

RENTABLE AREA



139TH AVENUE SOUTHEAST



# 5th Floor

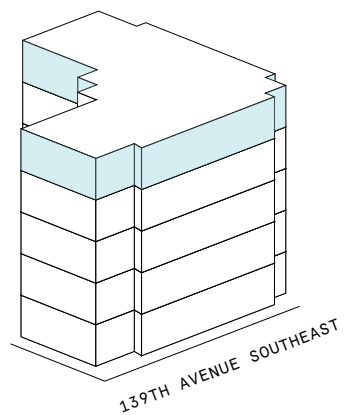
33,067 RSF

10  
MEETING ROOM(S)

9  
SHARED WORKSPACE(S)

## LEGEND

- MEETING ROOM
- SHARED WORKSPACE
- DEDICATED SPACE



139TH AVENUE SOUTHEAST



# 5th Floor

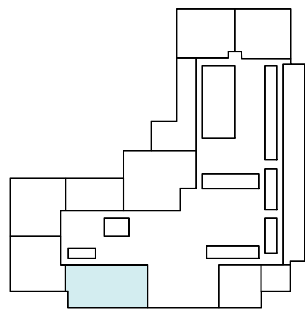
33,067 RSF

3,409 RSF Suite 05W101

1  
MEETING ROOM(S)



139TH AVENUE SOUTHEAST



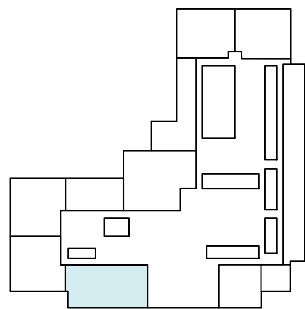
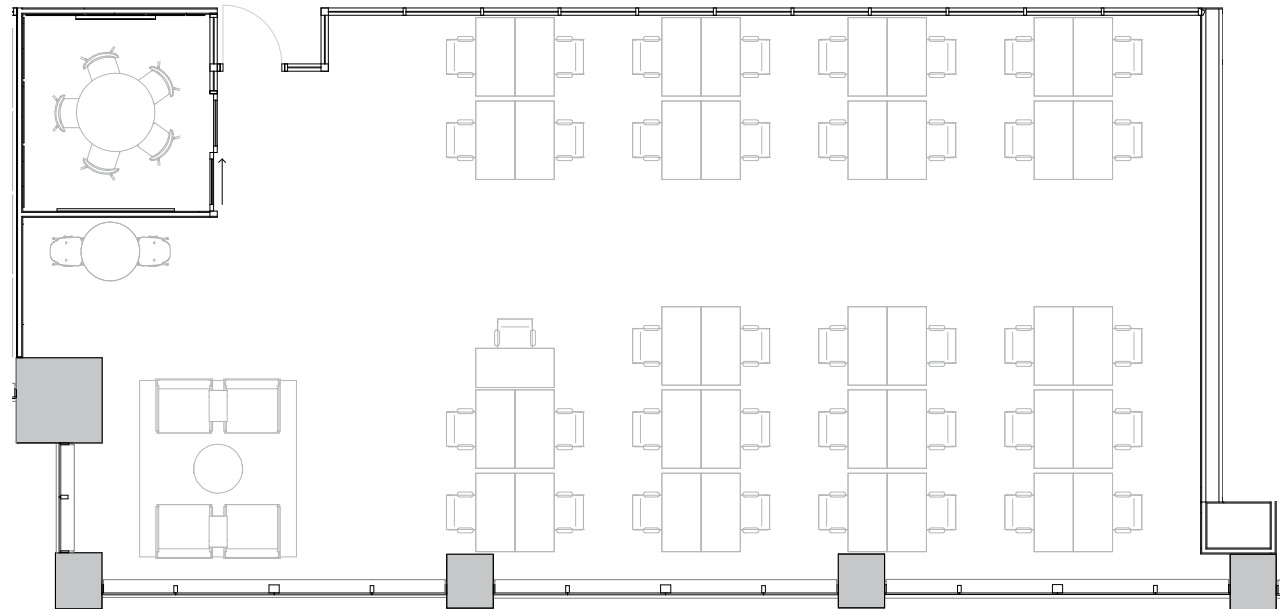
139TH AVENUE SOUTHEAST

# Suite 05W101

5th Floor

1  
MEETING ROOM(S)

3,409 RSF  
RENTABLE AREA



139TH AVENUE SOUTHEAST

# 5th Floor

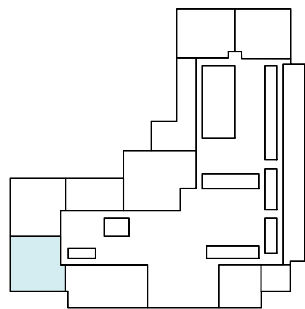
33,067 RSF

3,128 RSF Suite 05W102

1  
MEETING ROOM(S)



139TH AVENUE SOUTHEAST



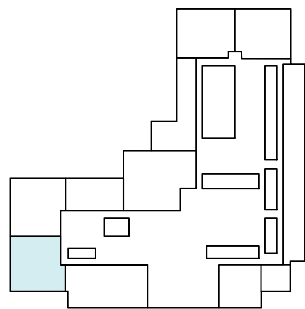
139TH AVENUE SOUTHEAST

# Suite 05W102

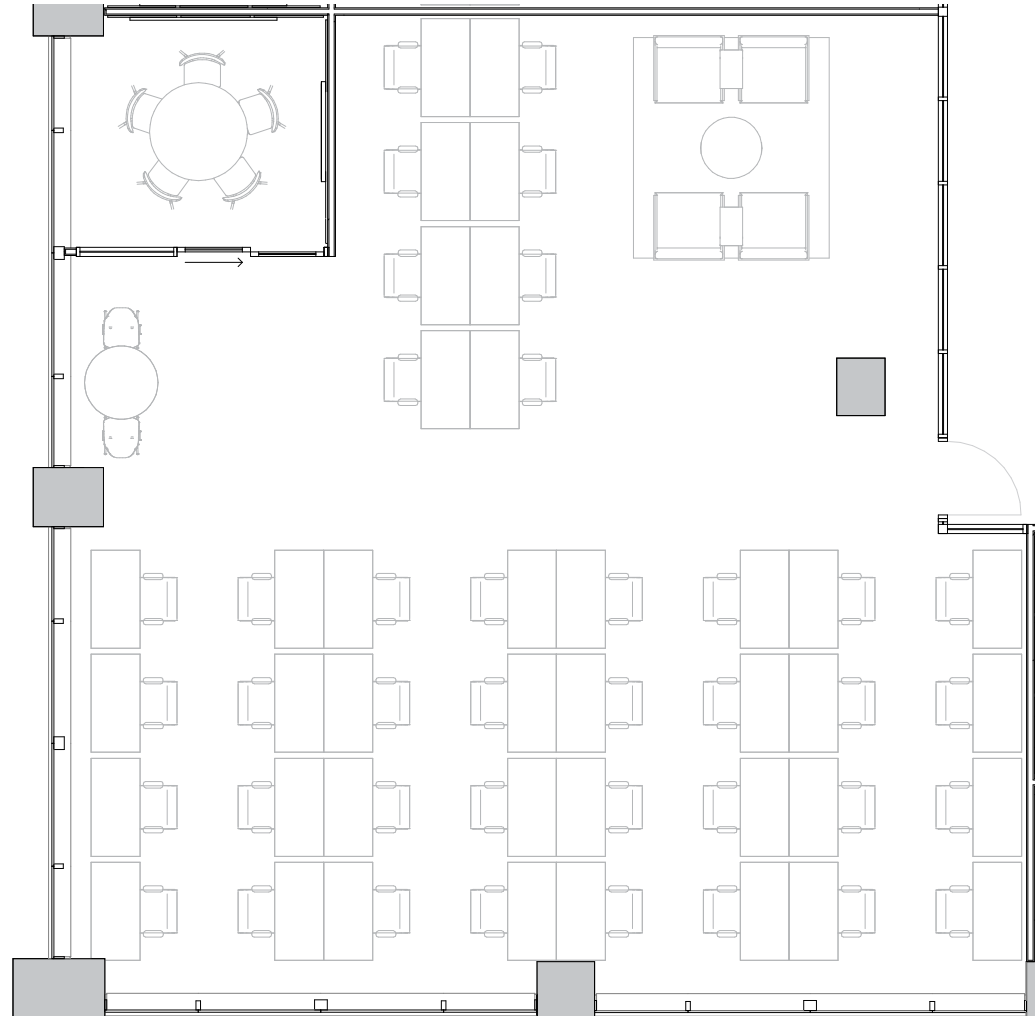
## 5th Floor

1  
MEETING ROOM(S)

3,128 RSF  
RENTABLE AREA



139TH AVENUE SOUTHEAST

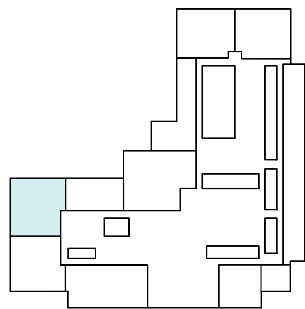


# 5th Floor

33,067 RSF

3,145 RSF Suite 05W103

1  
MEETING ROOM(S)



139TH AVENUE SOUTHEAST

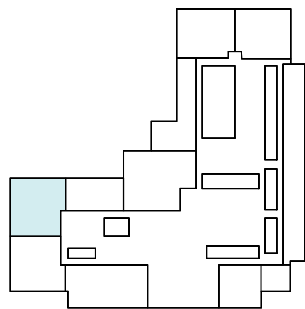
139TH AVENUE SOUTHEAST

# Suite 05W103

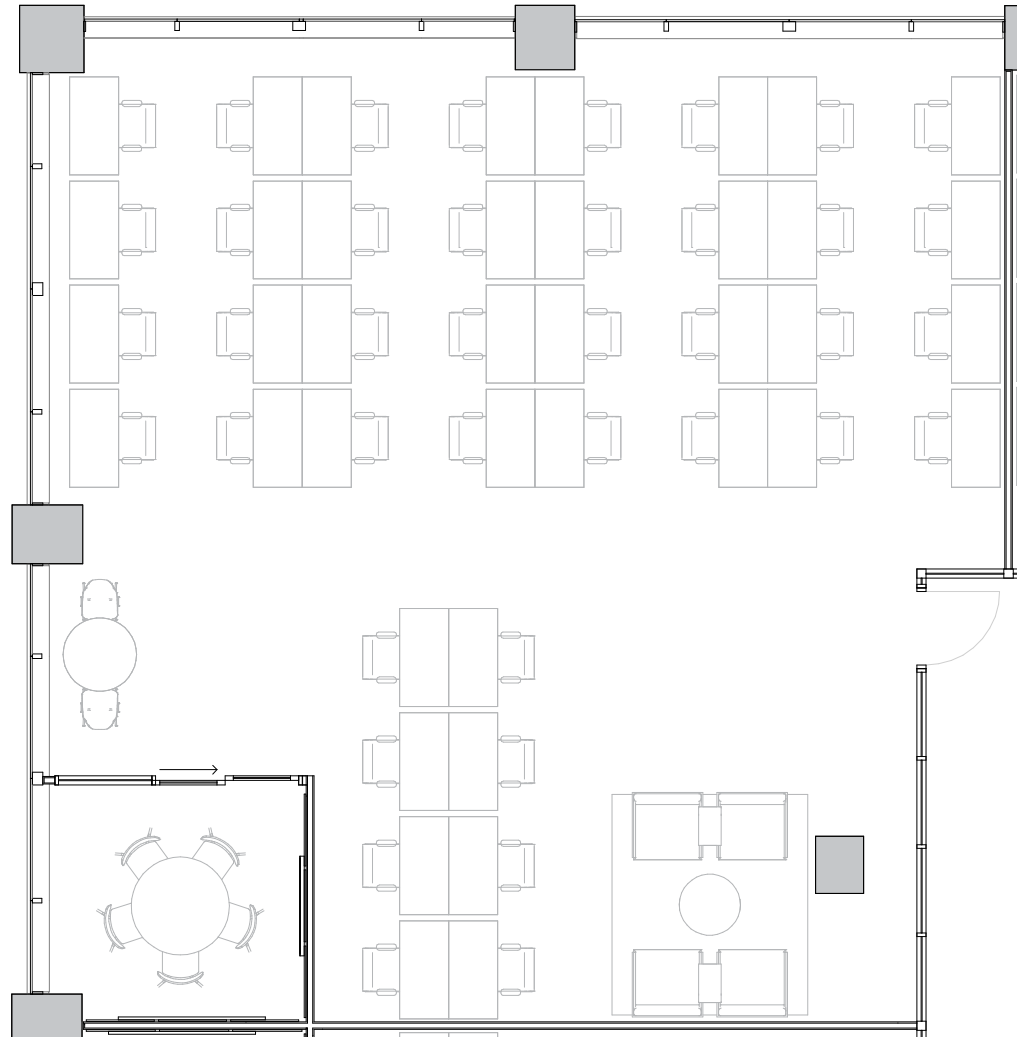
## 5th Floor

1  
MEETING ROOM(S)

3,145 RSF  
RENTABLE AREA



139TH AVENUE SOUTHEAST



# 5th Floor

33,067 RSF

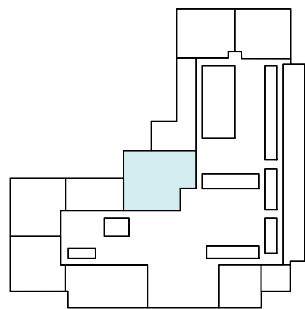
3,273 RSF Suite 05-106

2  
MEETING ROOM(S)

1  
PRIVATE OFFICE(S)



139TH AVENUE SOUTHEAST



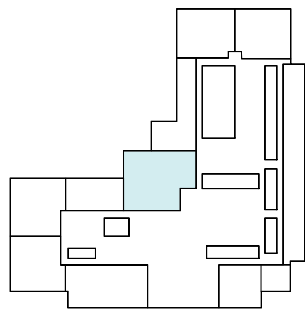
139TH AVENUE SOUTHEAST

# Suite 05-106

## 5th Floor

1  
MEETING ROOM(S)

3,273 RSF  
RENTABLE AREA



139TH AVENUE SOUTHEAST



# 5th Floor

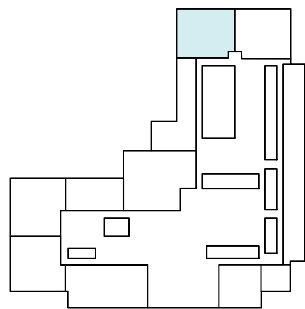
33,067 RSF

2,797 RSF Suite 05W123

1  
MEETING ROOM(S)



139TH AVENUE SOUTHEAST



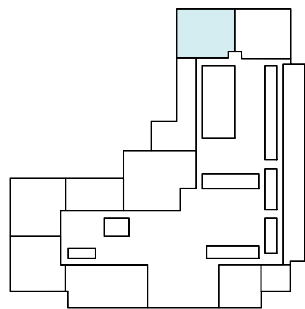
139TH AVENUE SOUTHEAST

# Suite 05W123

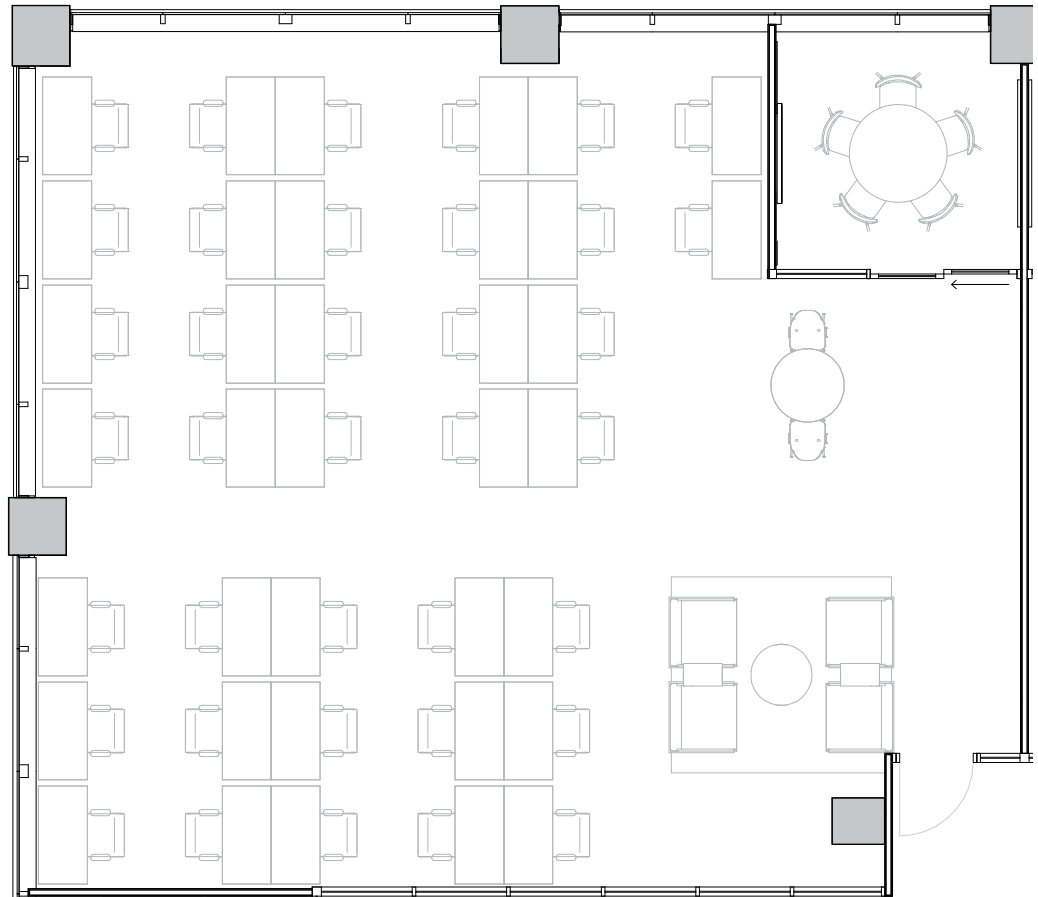
## 5th Floor

1  
MEETING ROOM(S)

2,797 RSF  
RENTABLE AREA



139TH AVENUE SOUTHEAST



# 5th Floor

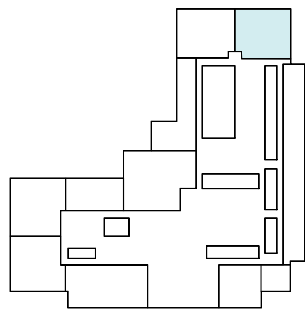
33,067 RSF

2,795 RSF Suite 05W124

1  
MEETING ROOM(S)



139TH AVENUE SOUTHEAST



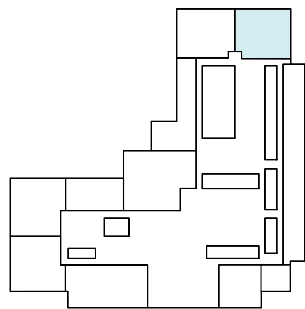
139TH AVENUE SOUTHEAST

# Suite 05W124

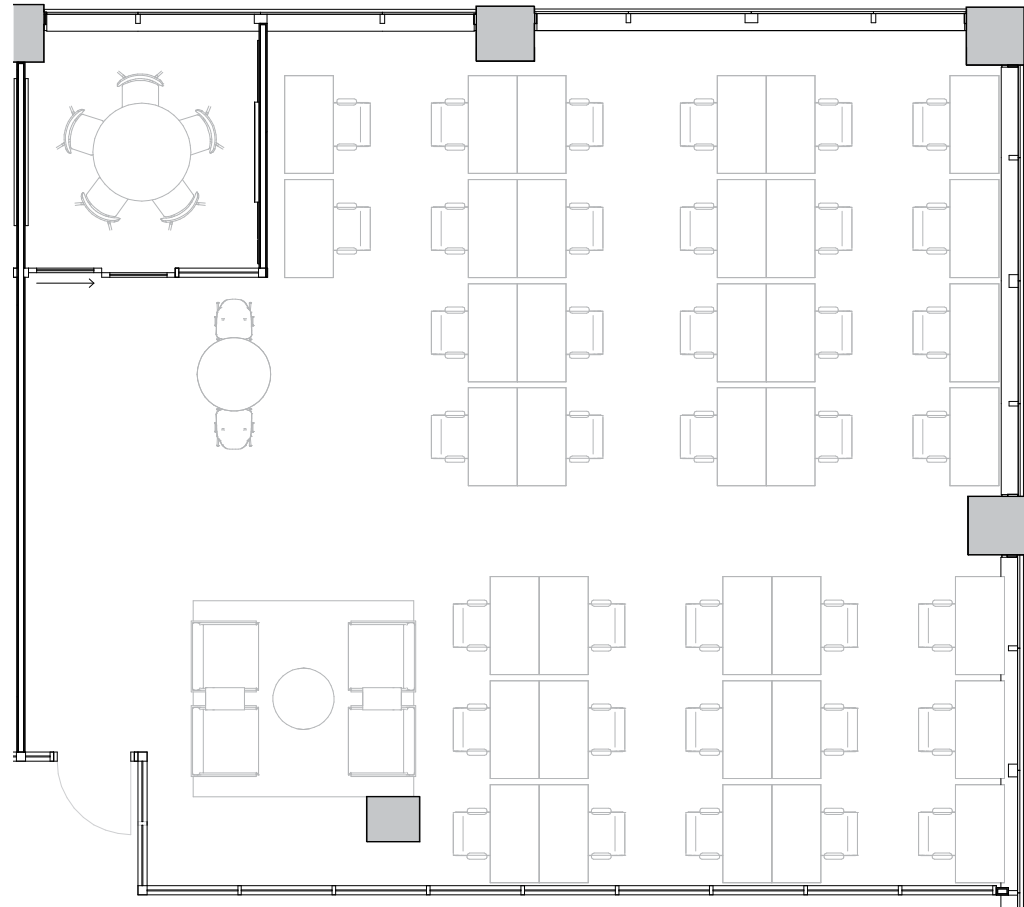
## 5th Floor

1  
MEETING ROOM(S)

2,795 RSF  
RENTABLE AREA



139TH AVENUE SOUTHEAST



# Contact

---

For leasing inquiries please reach out to our team.



## Cody Morrison

PORTFOLIO DIRECTOR  
CODY.MORRISON@WEWORK.COM  
206.255.3378

## Jerrod Steele

SENIOR LEASING DIRECTOR  
JERROD.STEELE@WEWORK.COM  
206.777.5299

## Hannah Howell

LEASING MANAGER  
HANNAH.HOWELL@WEWORK.COM  
941.539.8198