

FOR LEASE

THE FISHER BUILDING

16701 SE McGillivray Blvd | Vancouver, WA 98683

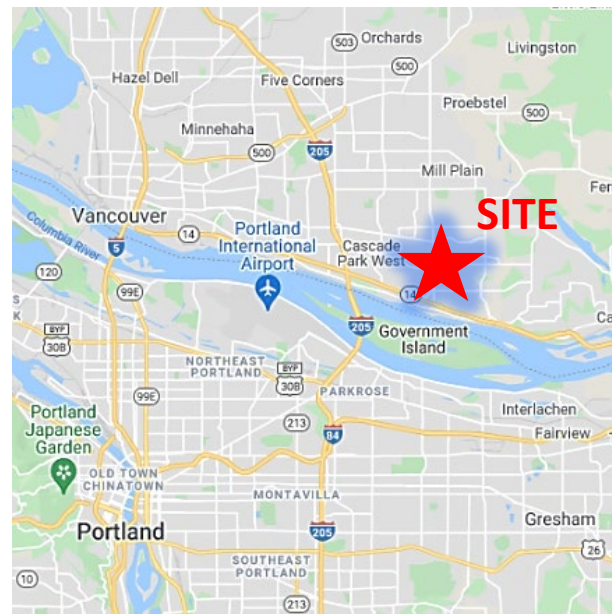


900 Washington St, Suite 850, Vancouver, WA
360.750.5595 | www.fg-cre.com



PROPERTY HIGHLIGHTS

- Located in the popular Fisher's Landing area of Vancouver, Washington, The Fisher Building is conveniently located within one mile of SR-14 and I-205 making the Portland International Airport and the entire metro area minutes away. Several dining, shopping and service opportunities are in the immediate vicinity.
- AVAILABILITY:
 - Suite 125 – 1,553 RSF
- PARKING RATIO: 4/1,000 SF
- LEASE RATE: \$26.50/SF, Full Service



FOR MORE INFORMATION:

Adam Roselli, CCIM, SIOR | 360.597.0568 | aroselli@fg-cre.com
Byron Roselli | 360.597.0567 | broselli@fg-cre.com

FOR LEASE

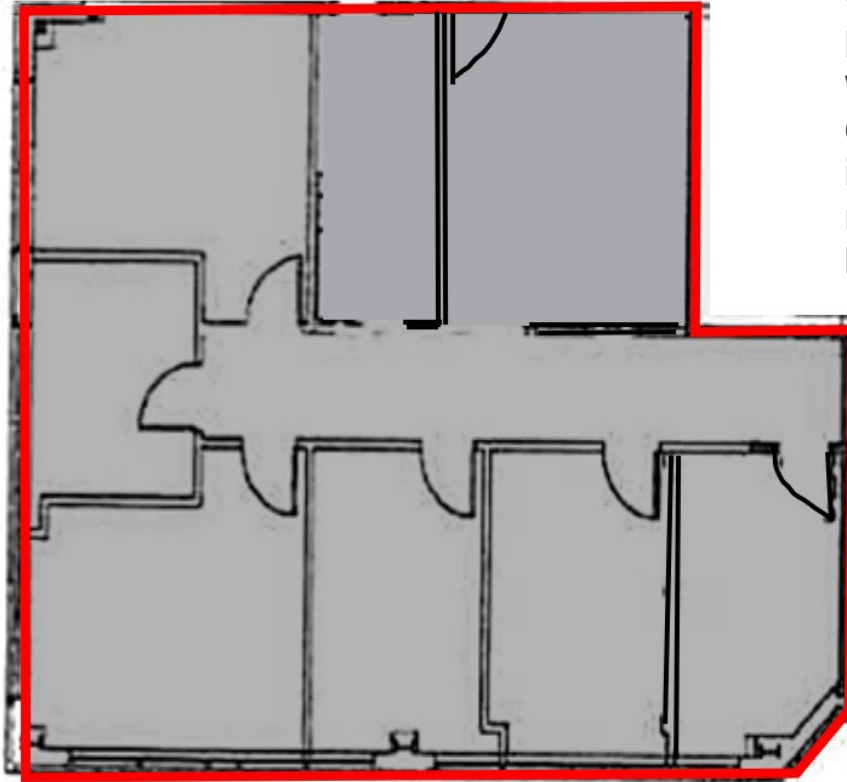
THE FISHER BUILDING

16701 SE McGillivray Blvd | Vancouver, WA 98683



900 Washington St, Suite 850, Vancouver, WA
360.750.5595 | www.fg-cre.com

Suite 125 – 1,553 RSF



The Fisher Building is a highly visible two-story brick commercial building offering a professional and productive working environment for most office users. Amenities include common conference room and men's and women's locker rooms.



FOR LEASE

THE FISHER BUILDING

16701 SE McGillivray Blvd | Vancouver, WA 98683



900 Washington St, Suite 850, Vancouver, WA
360.750.5595 | www.fg-cre.com



2023 Demographics

| | 1 Mile | 3 Mile | 5 Mile |
|-------------------------------|-----------|-----------|-----------|
| Est. Population | 16,964 | 82,274 | 197,022 |
| 2028 Projected Population | 17,721 | 86,462 | 204,858 |
| Est. Average Household Income | \$106,210 | \$108,563 | \$100,659 |
| Est. Total Businesses | 854 | 3,281 | 8,327 |
| Est. Total Employees | 7,638 | 30,563 | 82,470 |

- 8 miles to Portland International Airport
- 10 miles to downtown Vancouver
- 18 miles to downtown Portland

This statement with the information it contains is given with the understanding that all the negotiations relating to the purchase, rental or leasing of the property described above shall be conducted through this office. The above information, while not guaranteed, has been secured from sources we believe to be reliable.