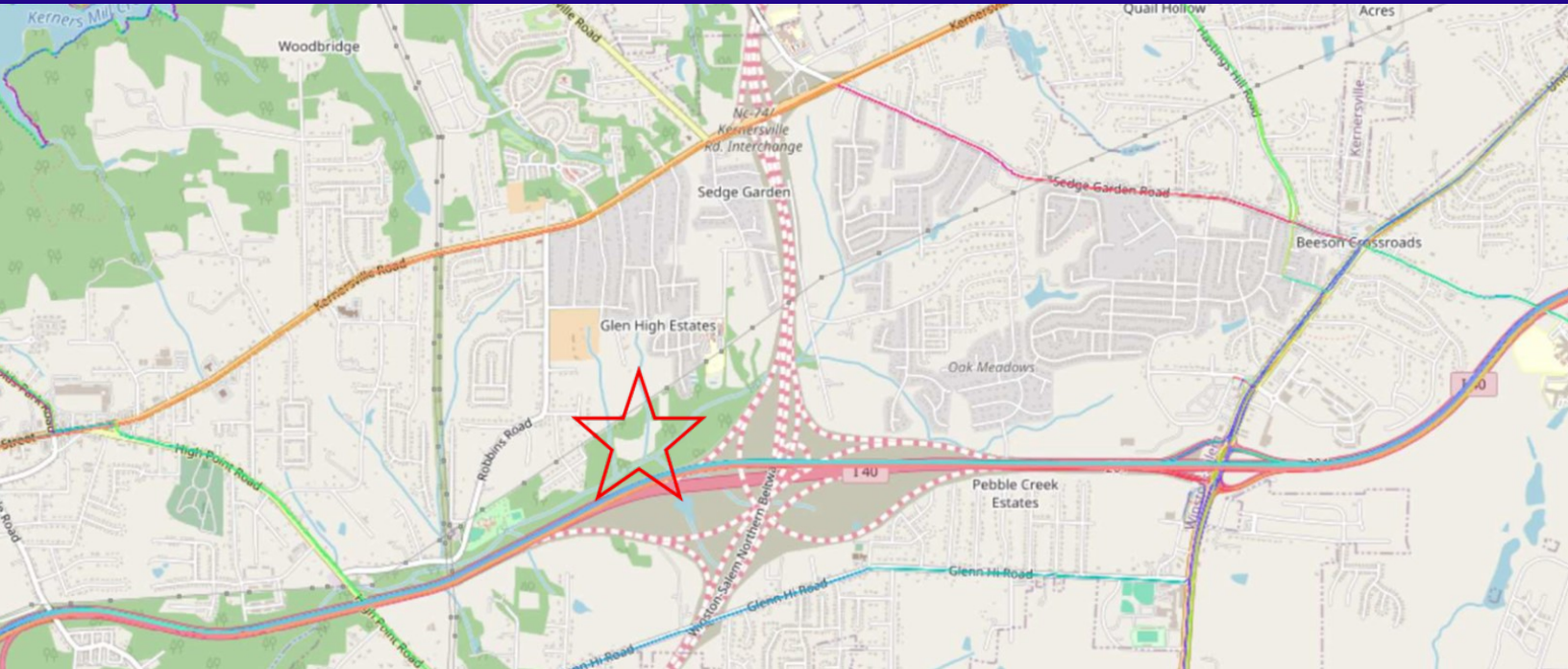




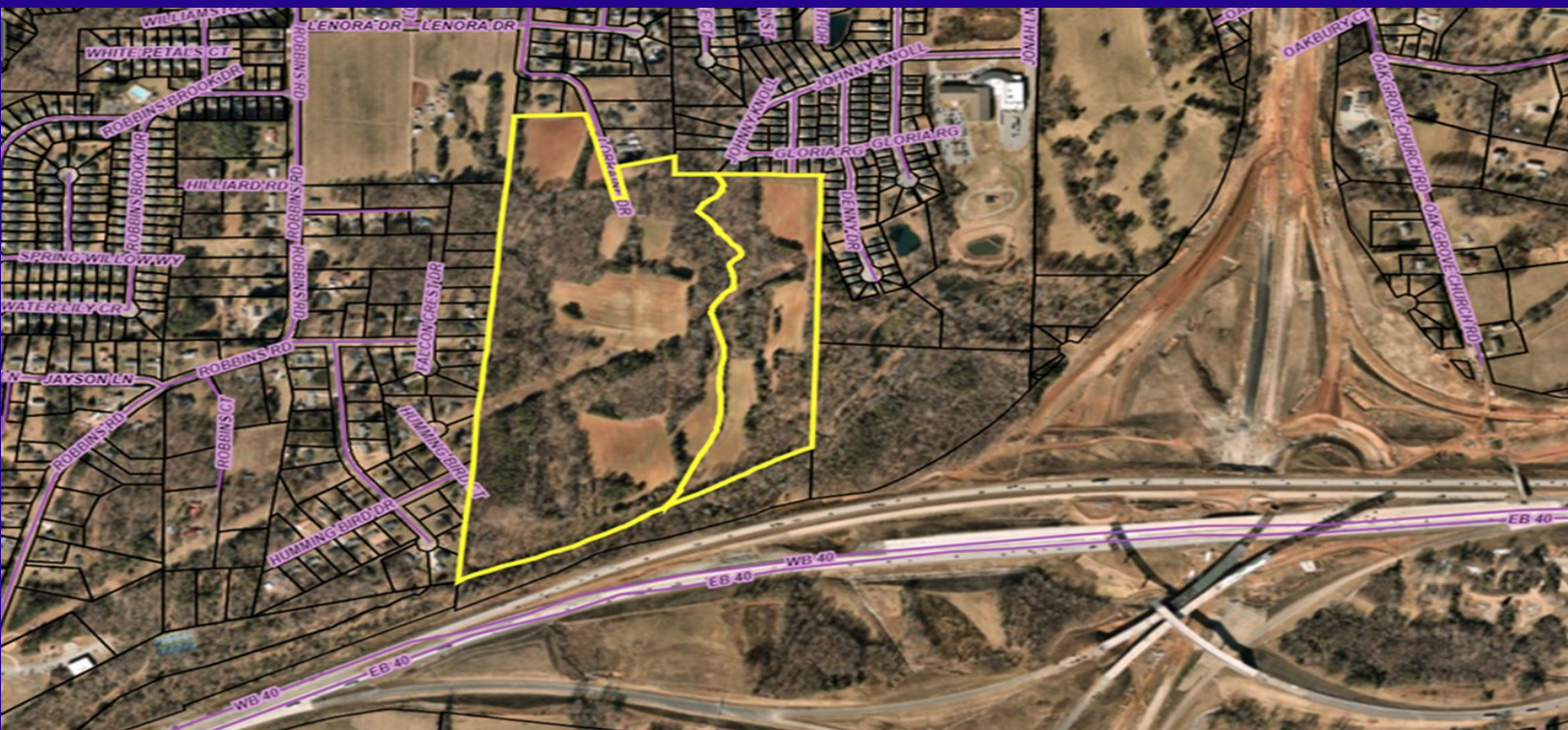
STEWART REALTY, LLC

FOR SALE 70 +/- AC SINGLE FAMILY LAND

Lorraine Drive, Winston Salem, NC 27107



Located in Winston Salem near I40, Hwy. 311, and the New Beltway. Site consists of 2 parcels of land totaling 70 acres. Several retail centers, schools, parks, and recreation centers in close proximity.





STEWART REALTY, LLC

SINGLE FAMILY LAND

Lorraine Drive, Winston Salem, NC 27107

SITE INFORMATION

Total Acreage:	70 +/-
Asking Price:	Market Pricing
Zoning:	RS9
Parcel ID:	6864-19-8212 & 6864-18-2940
Local Schools:	Smith Farm Elementary (within walking distance) Southeast Middle School Glenn High School
Airport:	Piedmont Triad International (17 Miles)
Located near many desirable corporate parks (22 miles).	
Very Near to an abundance of amenities including Walmart & Starbucks (7 miles).	



TOPO & UTILITIES

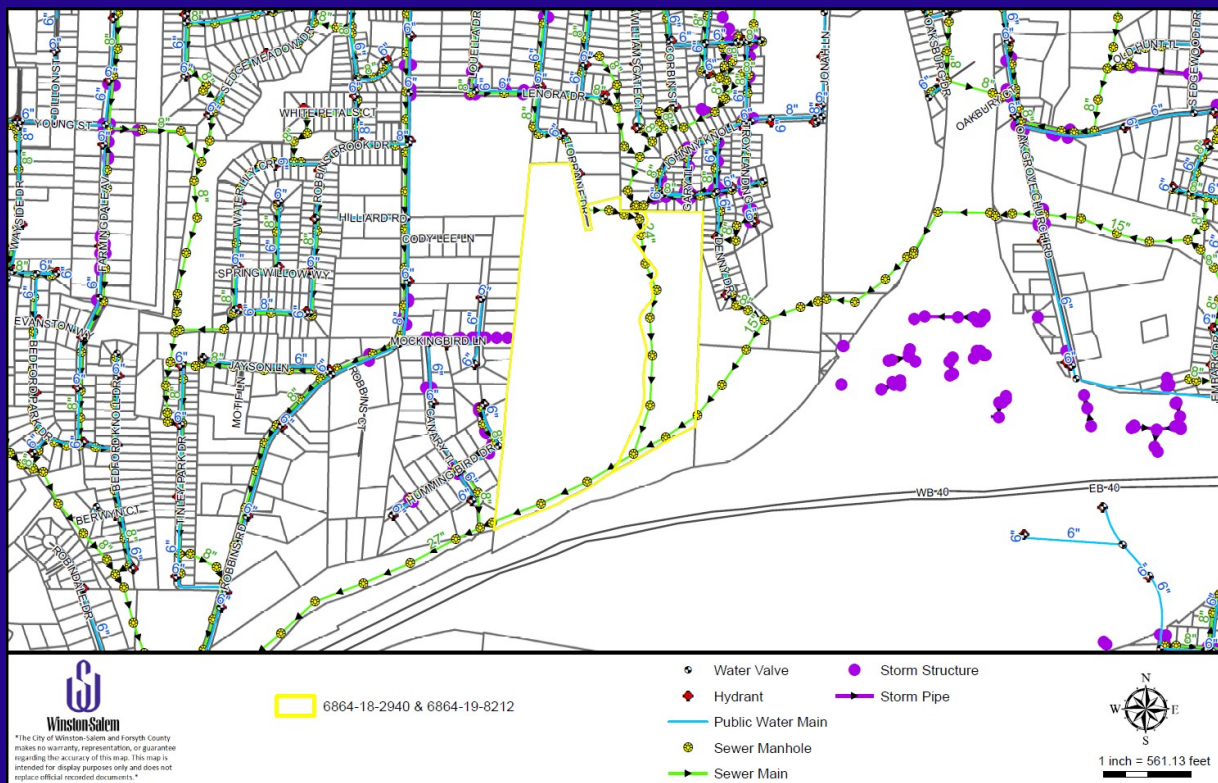
Lorraine Drive, Winston Salem, NC 27107

STEWART REALTY, LLC

Potential for 120+ Single Family Detached Lots



City of Winston Salem Water and Sewer





STEWART REALTY, LLC

SINGLE FAMILY LAND

Lorraine Drive, Winston Salem, NC 27107

DEMOGRAPHICS

POPULATION	47,093
HOUSEHOLDS	16,925
OWNER OCCUPIED HOUSING UNITS	3,876
RENTER OCCUPIED HOUSING UNITS	6,528
AVERAGE HOUSEHOLD INCOME	\$73,108