

815 PENNSYLVANIA AVE

Fort Worth, TX 76104

Medical Office For Lease

16,853 RSF



Leasing Information:
214.461.2300

Holt Martin
214.461.2383
hmartin@lpc.com

Elizabeth Madden
214.461.2366
emadden@lpc.com

Lincoln

Lincoln Property Company
8140 Walnut Hill Lane Suite 700
Dallas, TX 75231

www.lpc.com

815 PENNSYLVANIA AVE

Fort Worth, TX 76104

Medical Office For Lease



Offering Summary

Building Size:	16,853 SF
Available SF:	16,853 SF (will demise)
Lot Size:	55,915 SF
Year Built:	1957
Renovated:	2015
Zoning:	F1

Property Highlights

- Located in Fort Worth Medical Innovation District
- Excellent access to I-35W & I-30
- Single Story
- Free Surface Parking - 71 spaces

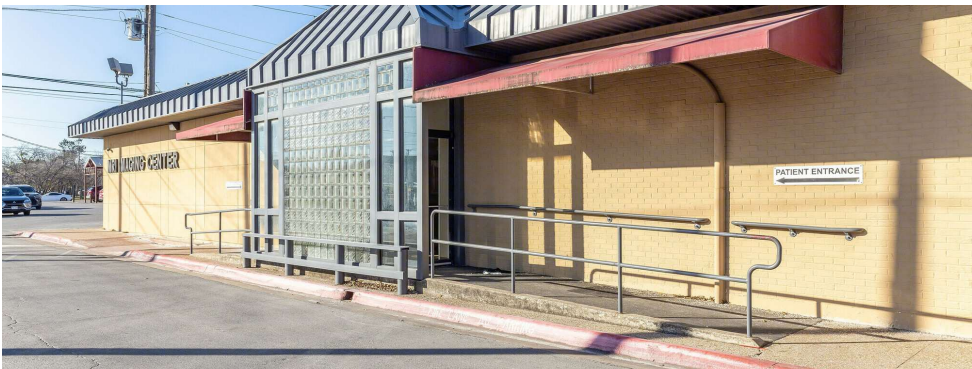
Property Overview

Single-story, medical office for lease. The 16,853 RSF imaging center offers 71 free surface parking spaces.

Location Overview

Located in the heart of the Fort Worth Medical Innovation District with excellent access to I-35W and I-30. The property provides immediate access to all major acute care hospitals and the TCU Burnett School of Medicine. Walkable to surrounding retail and apartments.

Availabilities	SF
1st Floor	16,853 SF



Holt Martin **Elizabeth Madden**
214.461.2383 214.461.2366
hmartin@lpc.com emadden@lpc.com

Lincoln

815 PENNSYLVANIA AVE

Fort Worth, TX 76104

1st Floor



Suite	Size
1st Floor	16,853 SF

Holt Martin

214.461.2383

hmartin@lpc.com

Elizabeth Madden

214.461.2366

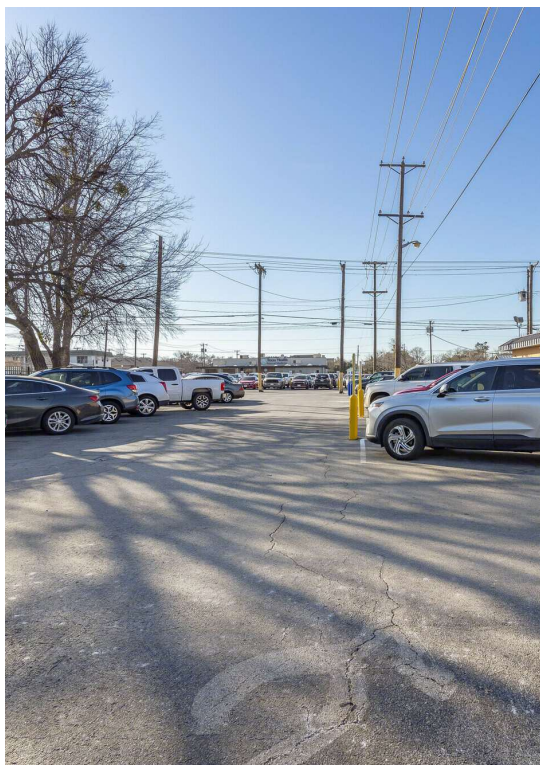
emadden@lpc.com

Lincoln

815 PENNSYLVANIA AVE

Fort Worth, TX 76104

Additional Photos



Holt Martin

214.461.2383
hmartin@lpc.com

Elizabeth Madden

214.461.2366
emadden@lpc.com

Lincoln

815 PENNSYLVANIA AVE

Location Map

Fort Worth, TX 76104



Holt Martin

214.461.2383

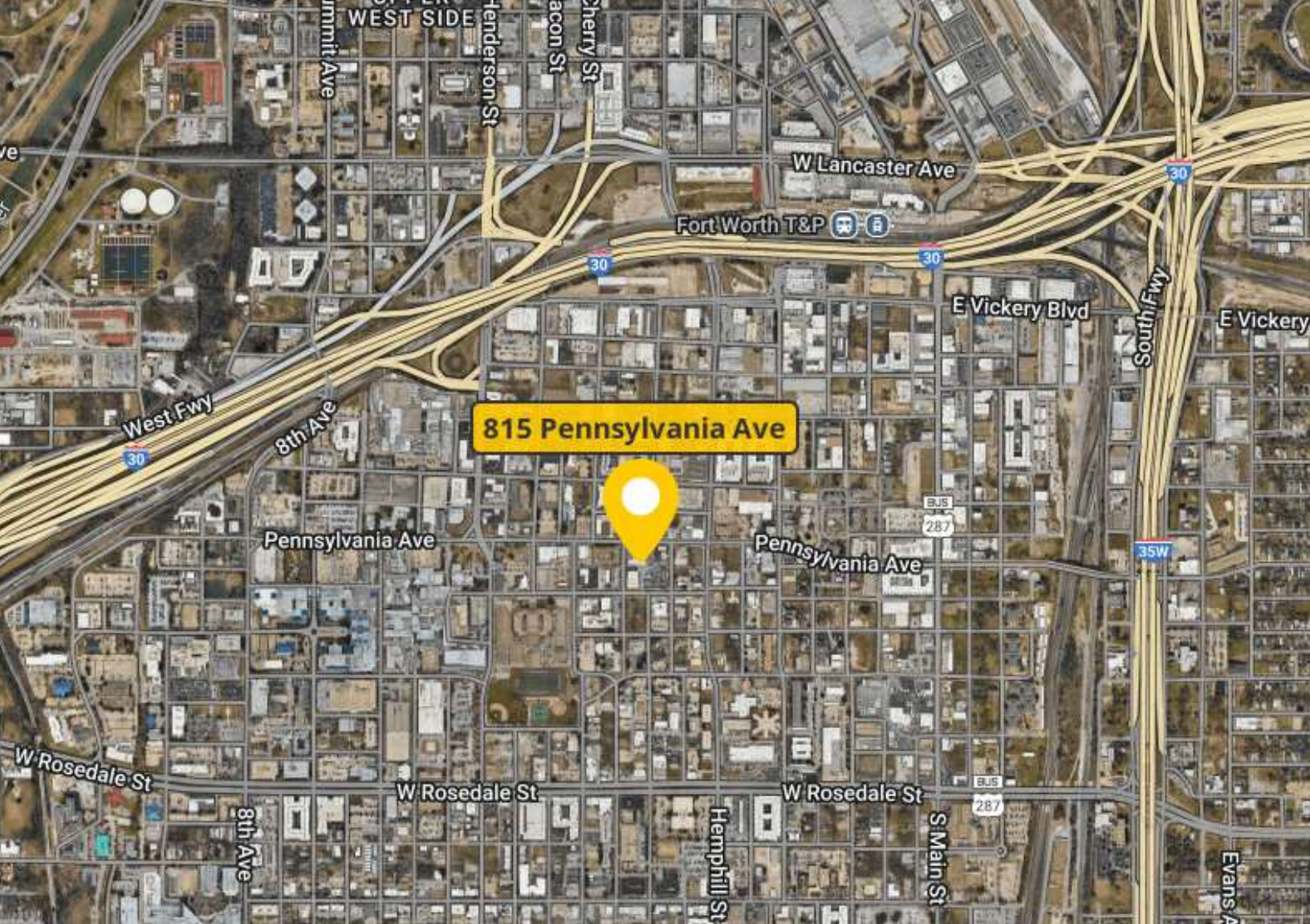
hmartin@lpc.com

Elizabeth Madden

214.461.2366

emadden@lpc.com

Lincoln



815 PENNSYLVANIA AVE

Fort Worth, TX 76104

Leasing Information:
214.461.2300

Holt Martin
214.461.2383
hmartin@lpc.com

Elizabeth Madden
214.461.2366
emadden@lpc.com

Lincoln

Lincoln Property Company
8140 Walnut Hill Lane Suite 700
Dallas, TX 75231

www.lpc.com