



HAYDEN EAST

8461-8463 HIGUERA STREET | CULVER CITY, CA

CBRE



OFFICE SPACE FOR INNOVATIVE MINDS



A GLIMPSE AT HAYDEN EAST



±6,041 SF - ±14,323 SF Available for Lease



Thoughtfully Crafted with Premium
Design Finishes



Turnkey Creative Office Complex



On-site Outdoor Relaxation Retreats



Exposed Timber Bow Truss Framing



Expansive, Private Patio Areas



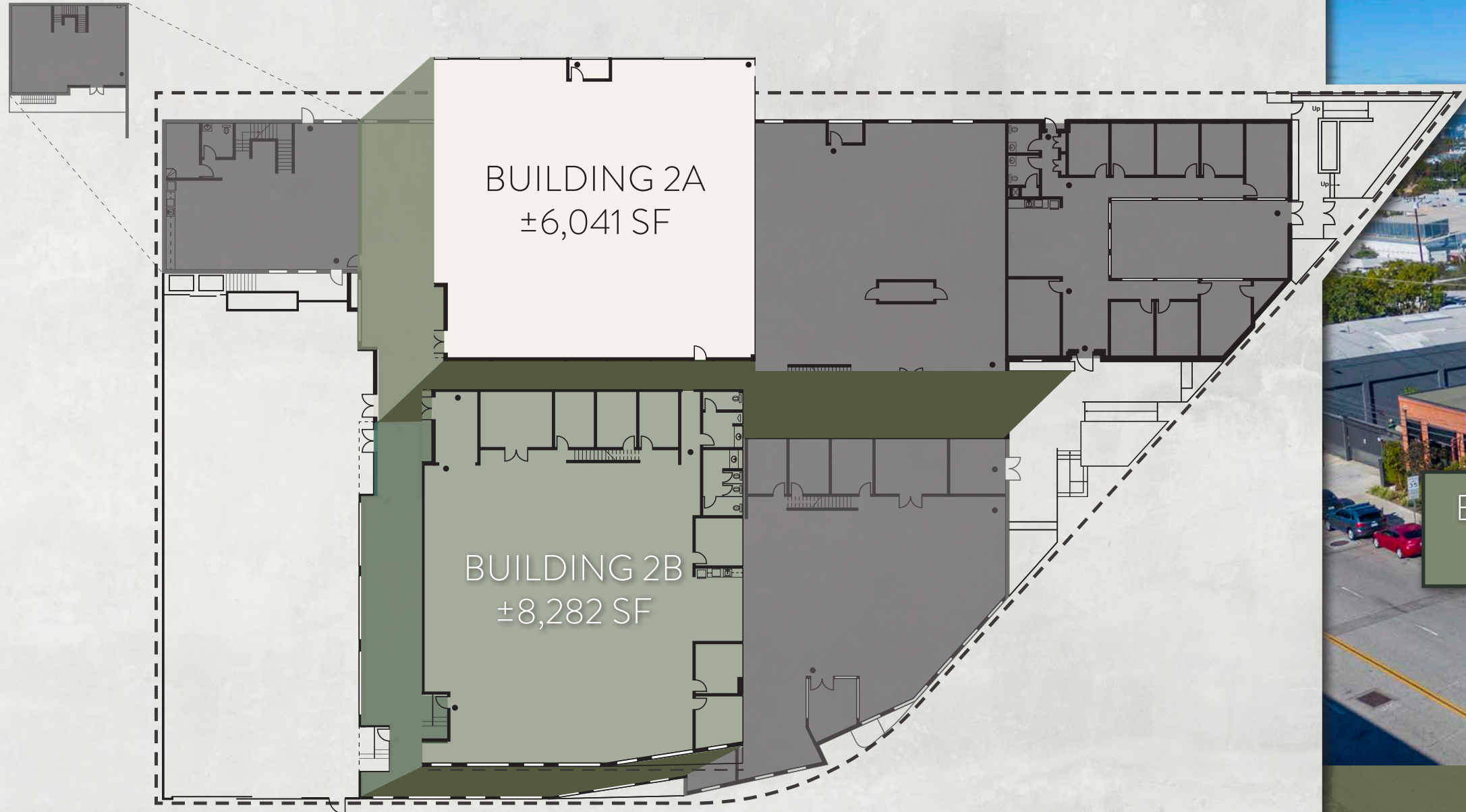
Naturally Lit from a Matrix of Skylights



On-site, Surface Parking



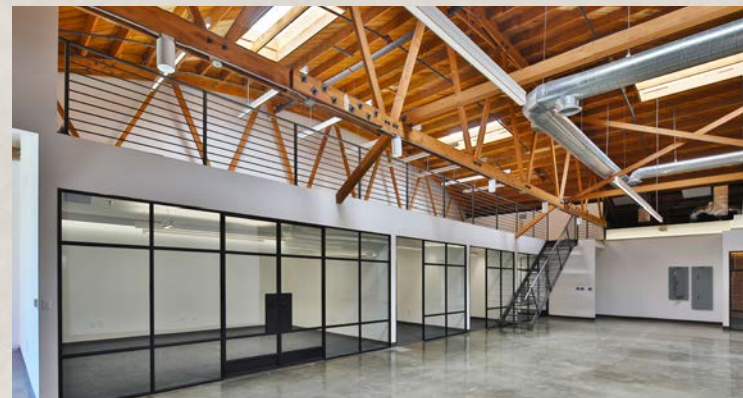
SPATIAL FRAMEWORK



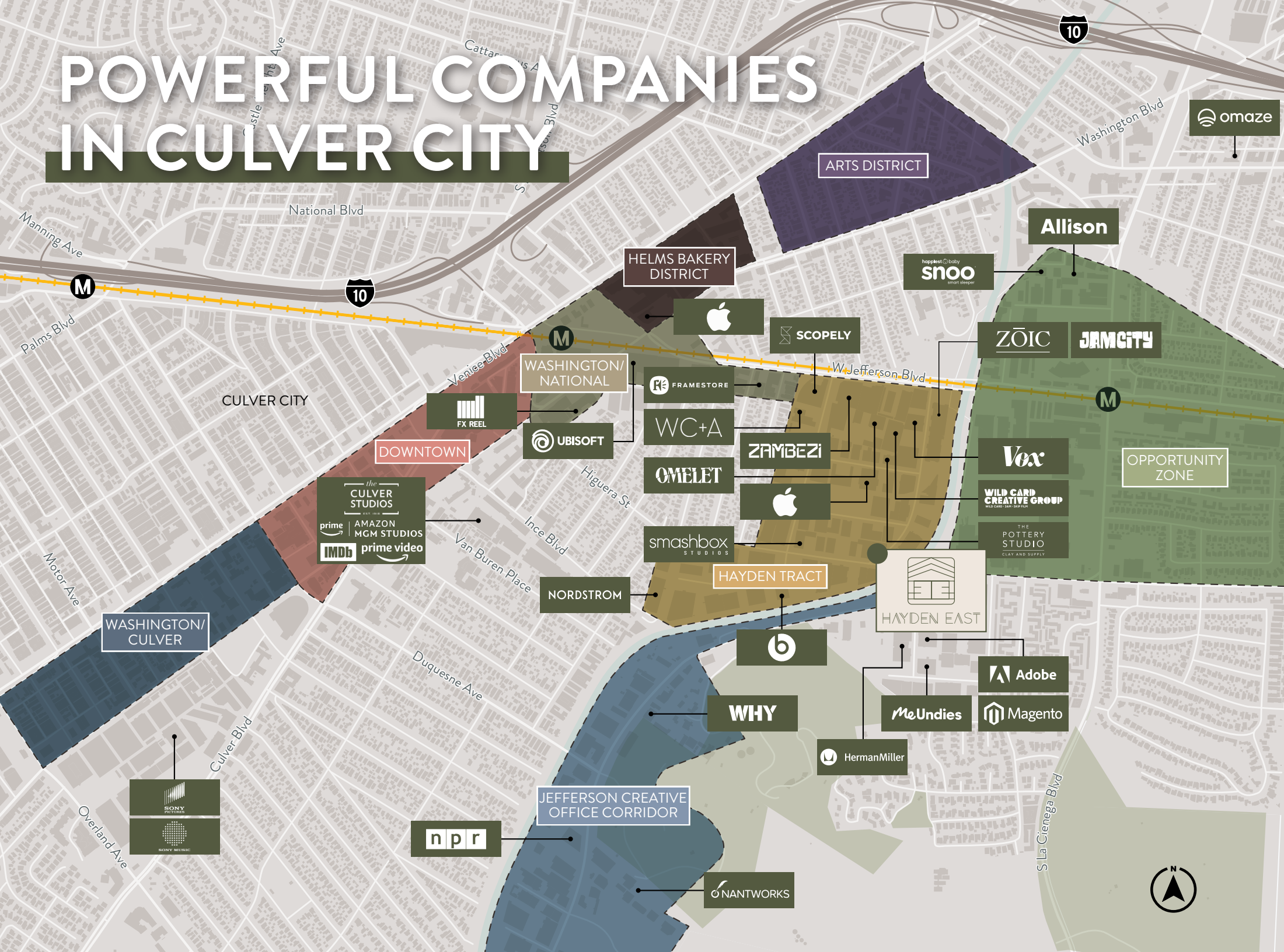


SITUATED AT THE CROSSROADS OF TECHNOLOGY AND ENTERTAINMENT





POWERFUL COMPANIES IN CULVER CITY





SURROUNDING AMENITIES





HAYDEN EAST

8461-8463 HIGUERA STREET | CULVER CITY, CA

FOR MORE INFORMATION, PLEASE CONTACT:

TOM SHEETS

EXECUTIVE VICE PRESIDENT
LIC. 01252183
+1 310 363 4943
TOM.SHEETS@CBRE.COM

QUINT CARROLL

FIRST VICE PRESIDENT
LIC. 01914692
+1 310 363 4973
QUINT.CARROLL@CBRE.COM

CBRE

© 2024 CBRE, Inc. All rights reserved. This information has been obtained from reliable sources but has not been verified for accuracy or completeness. CBRE, Inc. makes no guarantee, representation, or warranty and accepts no responsibility or liability for the accuracy, completeness, or reliability of the information contained herein. You should conduct a careful, independent investigation of the property and verify all information. Any reliance on this information is solely at your own risk. CBRE and the CBRE logo are service marks of CBRE, Inc. All other marks displayed on this document are the property of their respective owners, and the use of such marks does not imply any affiliation with or endorsement of CBRE. Photos herein are the property of their respective owners. Use of these images without the express written consent of the owner is prohibited.