

FOR SUBLEASE

GABRIEL'S COURT

2905 SAN GABRIEL, AUSTIN, TEXAS 78705



CUSHMAN &
WAKEFIELD



SUITE 218 | 2,000 - 2,500 RSF

SUBLEASE RATE: \$15.00/RSF NNN

2024 ESTIMATED OPEX: \$16.73/RSF

SUBLEASE LED: AUGUST 31, 2026

PROPERTY HIGHLIGHTS

- Plug-n-play mix hard wall/open office configuration
- Multi-tenant office and retail
- Musashino Sushi Dokoro restaurant on-site
- Close proximity to downtown, University of Texas and Seton Medical Center
- Free parking

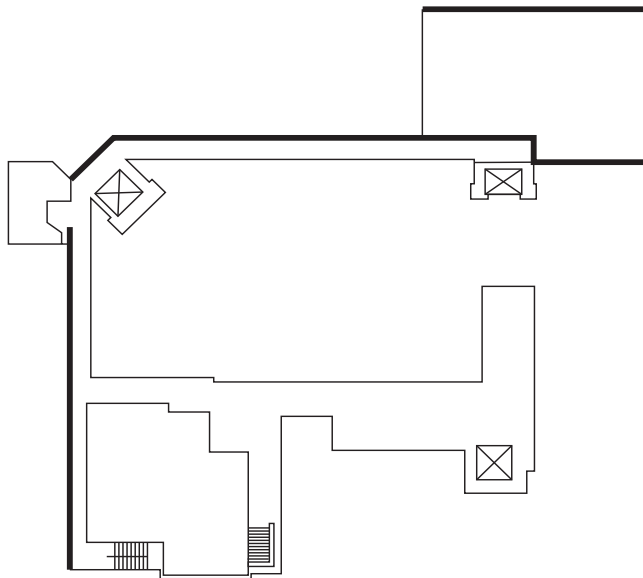


FOR SUBLEASE
GABRIEL'S COURT
2905 SAN GABRIEL STREET, AUSTIN, TX 78705



FLOOR PLAN SUITE 218 | 2,000 RSF

shared space



For more information, please contact:

BRIAN WALKER
Senior Director
+1 512 370 2456
brian.walker@cushwake.com

405 Colorado St., Suite 2300
Austin, TX 78701

T +1 512 474 2400
F +1 512 477 3037

cushmanwakefield.com