

AVAILABLE FOR SALE OR LEASE

3041 FORNI ROAD
PLACERVILLE, CA 95667

YOUR NAME HERE
FOR LEASE OR SALE

REDUCED PRICING OFFERED AT: \$3,250,000

NEWMARK

Jason Brinitzer
t 916-569-2341
jason.brinitzer@nmrk.com
CA RE License #02114854

Tom Conwell
t 916-569-2380
tom.conwell@nmrk.com
CA RE License #01394155

PROPERTY HIGHLIGHTS

Nestled in the heart of Placerville, California, 3041 Forni Rd. is a prestigious commercial retail building spanning 23,500 square feet. This rare opportunity is not only strategically positioned for maximum exposure but also serves as a quintessential bridge linking the charming El Dorado Foothills with the majestic South Lake Tahoe. Its prime location is a boon for servicing the bustling Placerville area, offering unparalleled accessibility and high-profile visibility. This, coupled with its standing as a potential beacon for owner users, makes it an exemplary haven for commercial retailers seeking to amplify their market presence. 3041 Forni Rd. stands as a beacon, offering a rare chance to invest in a highly visible and influential landmark, poised to captivate and cultivate a robust customer base.

- Address: 3041 Forni Road, Placerville, CA
- Market/Submarket: Placerville
- 23,500 SF Building
- Lot Size: 3.78 Acres
- Built in 1999
- 85 Parking Spaces
- Freeway Visibility
- Easy Ingress/Egress and access to Hwy 50
- 2 Dock High Roll Up Doors
- HWC (Highway Commercial) Zoning City of Placerville

[CLICK HERE FOR ALLOWED USES](#)



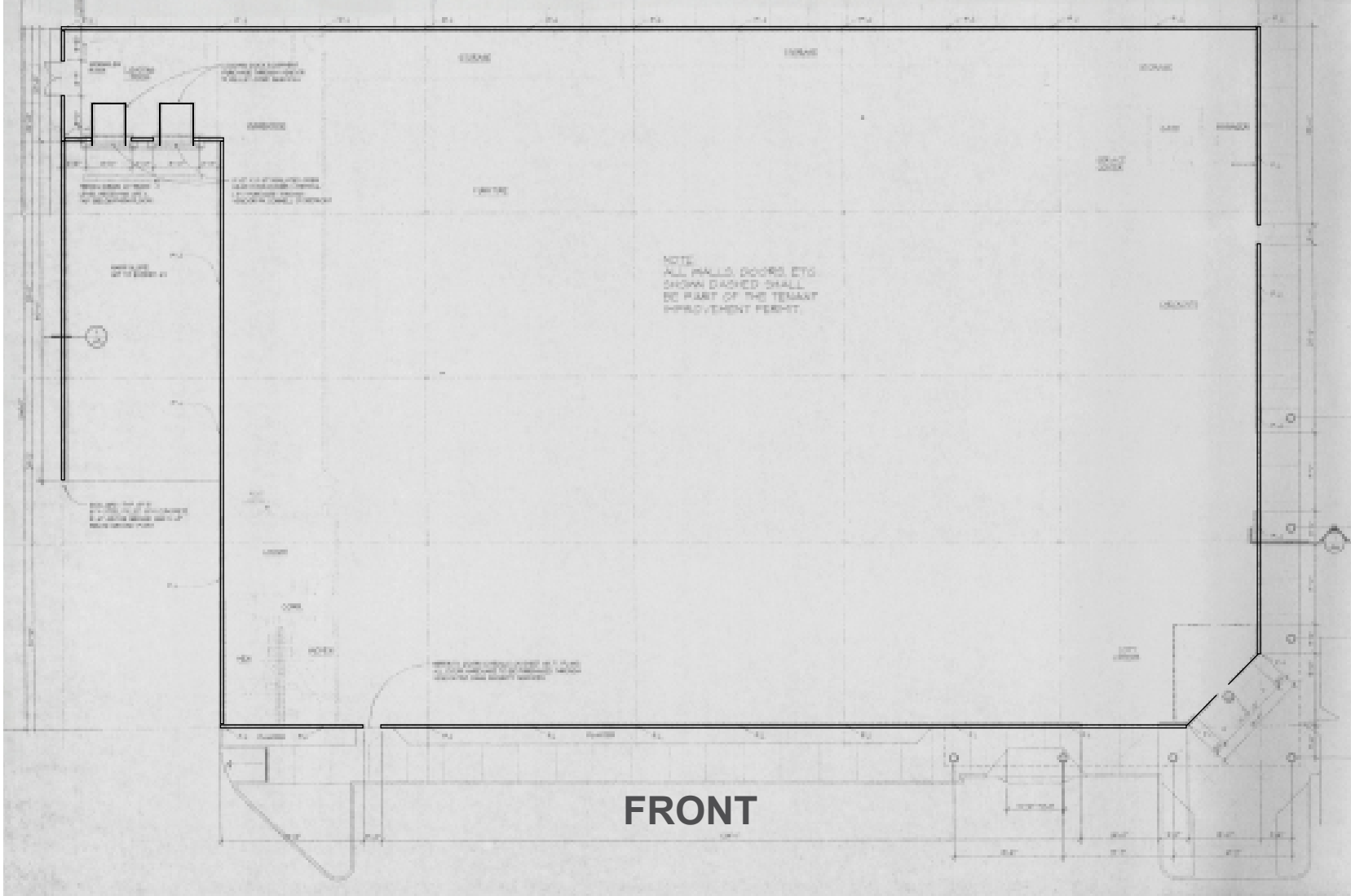
3041 FORNI ROAD, PLACERVILLE, CA 95667

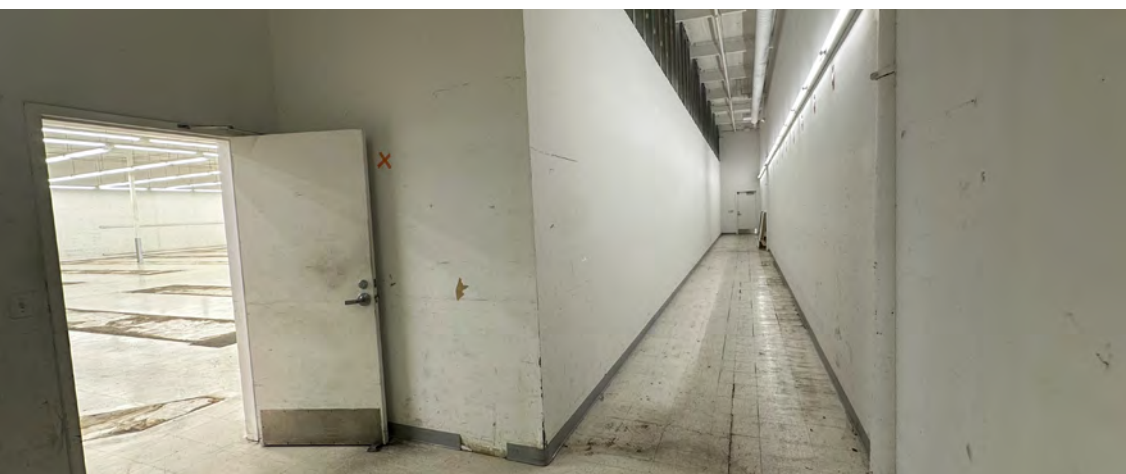
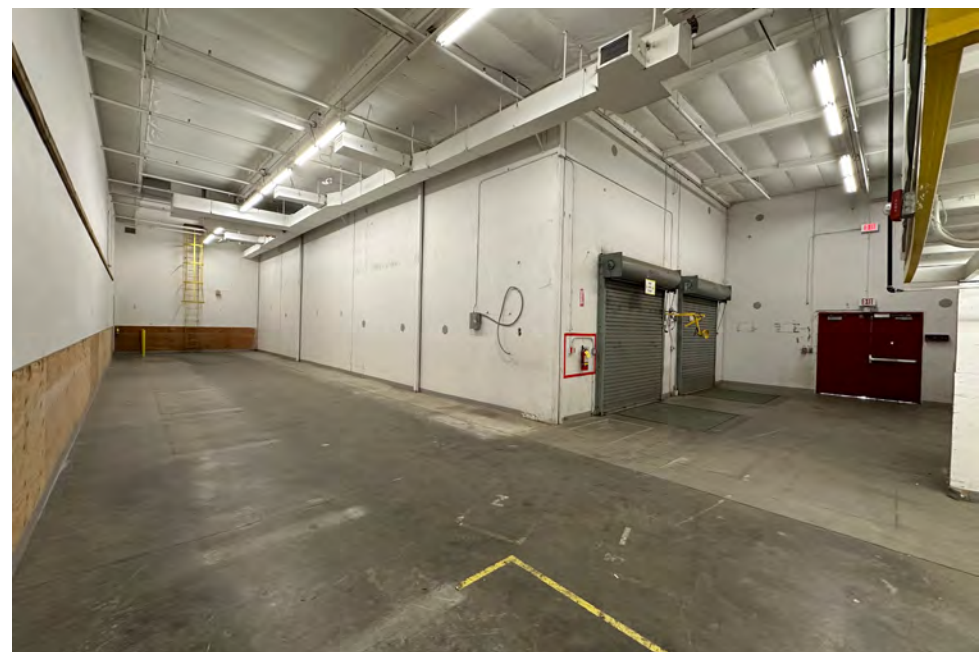
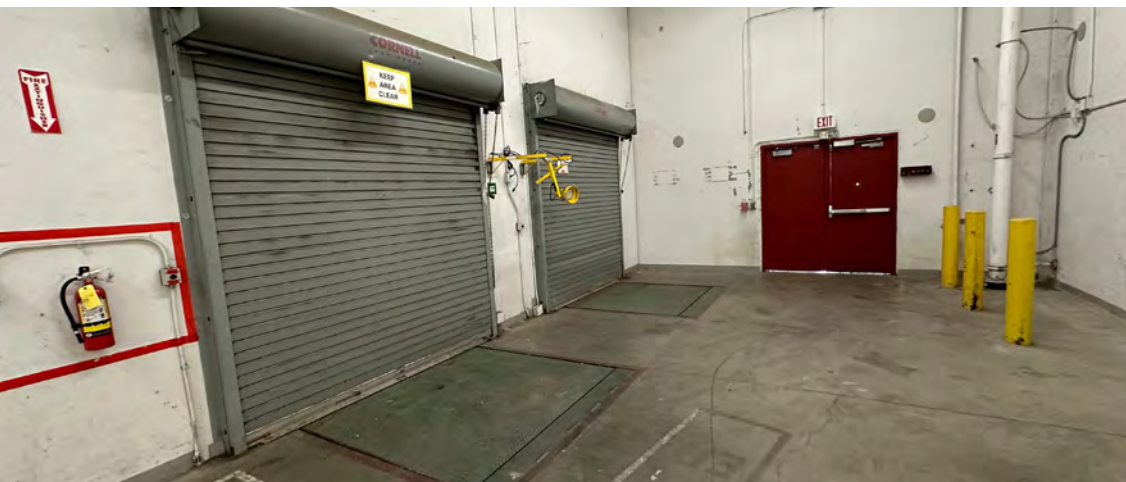
REDUCED PRICING:

Sale: \$3,250,000
Lease: \$1.00/SF NNN

FLOORPLAN

23,500 SF





3041 FORNI ROAD, PLACERVILLE, CA 95667

NEARBY RETAIL



3041 FORNI RD

CONTACT EXCLUSIVE AGENTS

JASON BRINITZER

t 916-569-2341

jason.brinitzer@nmrk.com

CA RE License #02114854

TOM CONWELL

t 916-569-2380

tom.conwell@nmrk.com

CA RE License #01394155

3041 FORN ROAD

The distributor of this communication is performing acts for which a real estate license is required. The information contained herein has been obtained from sources deemed reliable but has not been verified and no guarantee, warranty or representation, either express or implied, is made with respect to such information. Terms of sale or lease and availability are subject to change or withdrawal without notice.

980 Ninth Street, #2500, Sacramento, Ca. 95814 | (NMRK NW 2024) 23-0606 01/25

NEWMARK