

SALE

LIBERTYVILLE FARM

31140 HWY 21 Libertyville, IL 60048



OFFERING SUMMARY

Sale Price	\$5,250,000
Available SF	1,871,113 SF
Lot Size	42.97 Acres
Tax-Pins	1105400010 + 104300030
Taxes 2022	\$5,300+/-

PROPERTY OVERVIEW

Raw farmland for planned-unit-development (PUD) of residential, mixed-use or special conservation project. North of Peterson / Rte. 37 Westside of HWY 21 In unincorporated Libertyville IL Just South of Casey Road. Currently in unincorporated Lake County Illinois with well water and septic sewer system has an option to gain both municipal water and sewer through annexation with the City of Waukegan. Note that schools are located within the Village of Libertyville District.



Sheryl Fisher

Commercial Broker

312 988 9070

sherylfisher@cbcnrt.com

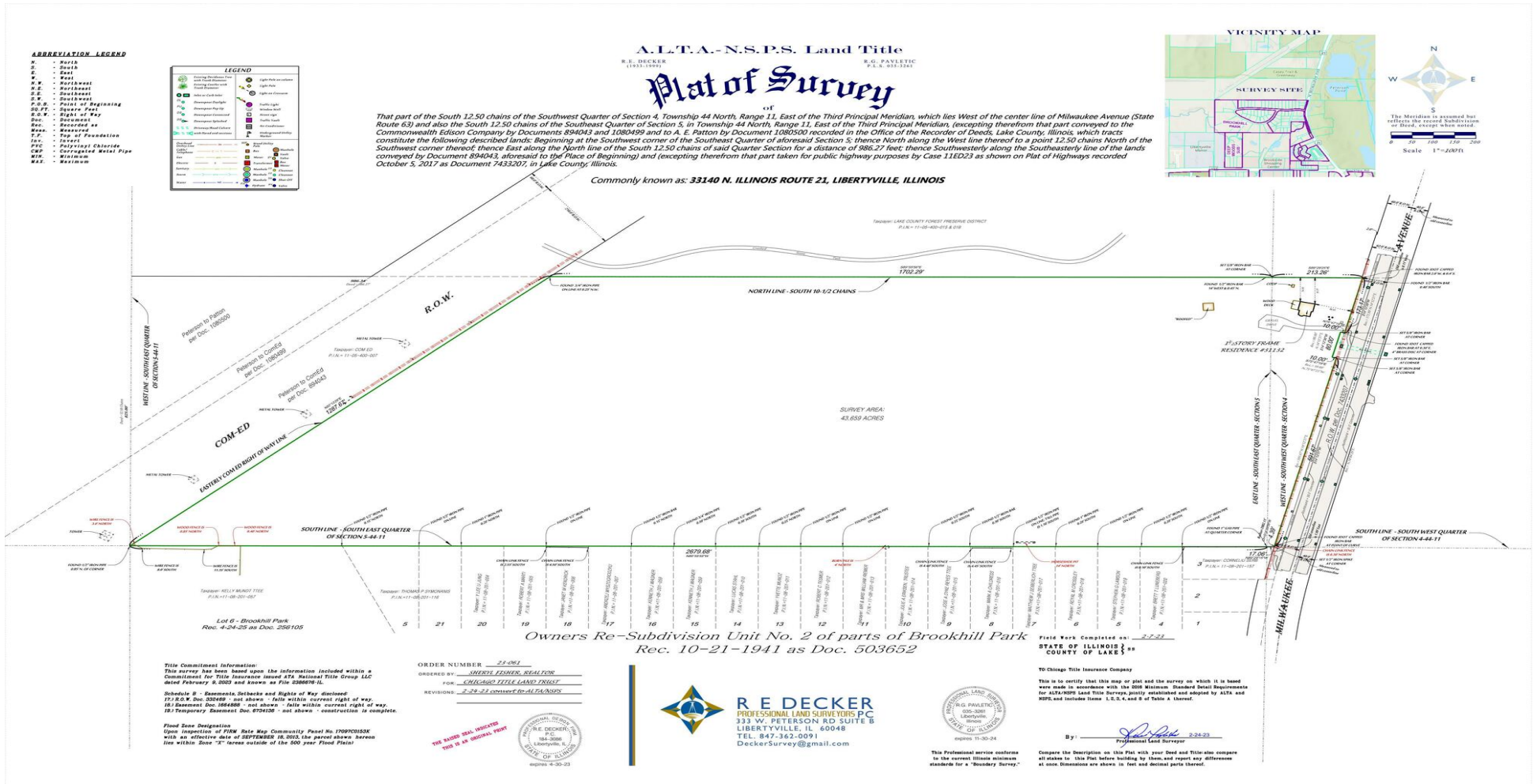


COLDWELL BANKER
COMMERCIAL
REALTY

SALE

LIBERTYVILLE FARM SURVEY

31140 HWY 21 Libertyville, IL 60048



Sheryl Fisher
Commercial Broker
312 988 9070
sherylfisher@cbcnrt.com

