



PROGRESSIVE
REALTY LLC.com

665 EXCHANGE CIR #100, BETHLEHEM, GA | (770) 867-6821

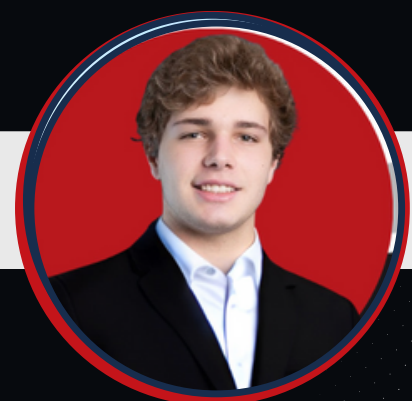
ProgressiveRealtyLLC.com

COMMERCIAL LAND FOR SALE

CRAWFORD, GA - 6.19 ACRES

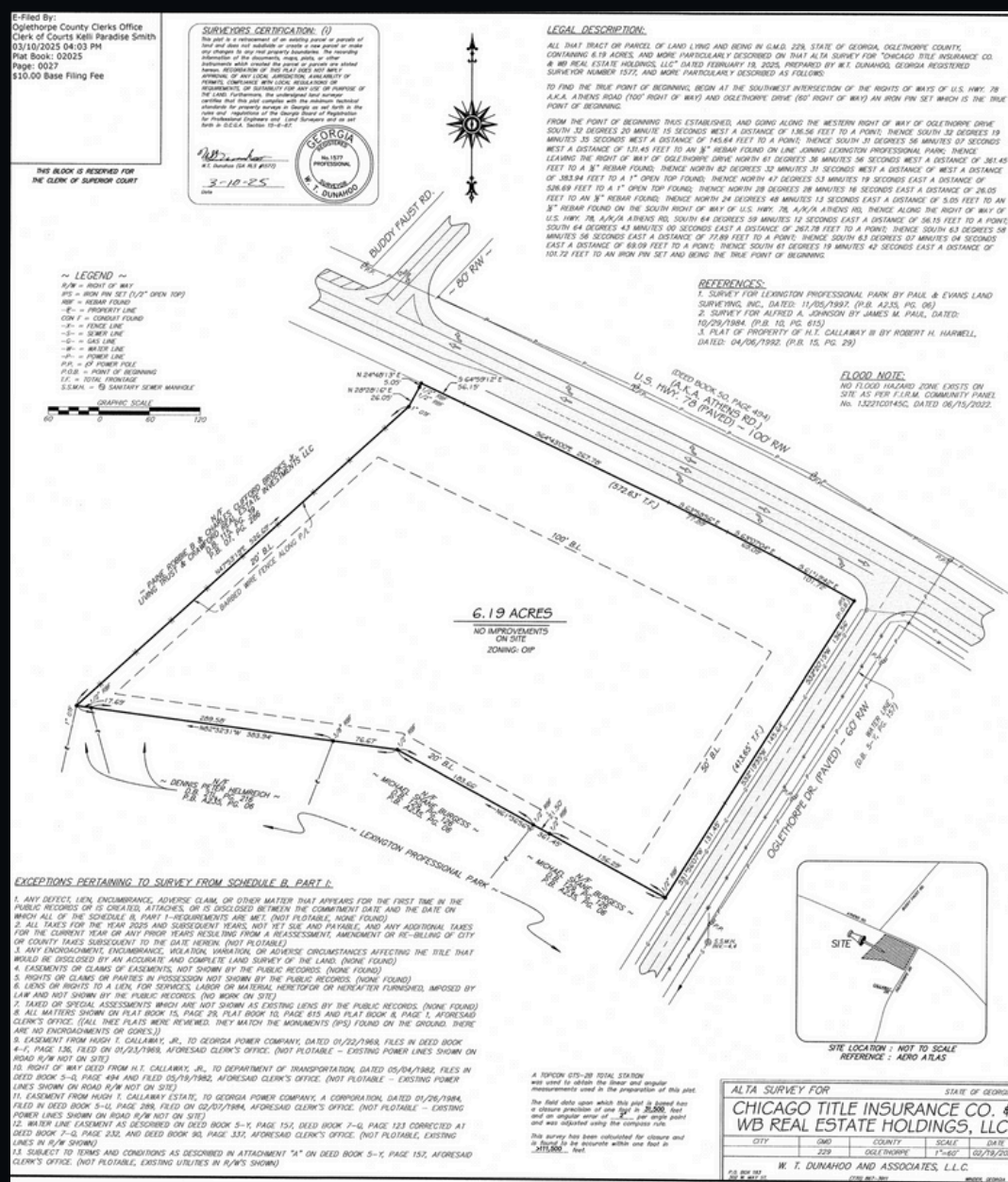


JEAN ROUX | (404) 242-6835 | JEANROUX21@HOTMAIL.COM





ProgressiveRealtyLLC.com



- **6.19-ACRE COMMERCIAL CORNER TRACT WITH OVER 600 FT FRONTAGE ON HWY 78 FOR SALE.**
- **OPTIMAL LOCATION FOR QSR, MEDICAL OFFICE, AND SELF-STORAGE FACILITIES.**
- **LOCATED LESS THAN HALF A MILE AWAY FROM OGLETHORPE COUNTY HIGH SCHOOL. ALSO UNDER 5 MINUTES FROM BOTH DOWNTOWN CRAWFORD AND DOWNTOWN LEXINGTON**

DEMOGRAPHICS:

2025 POPULATION & HOUSEHOLD DATA:

	DISTANCE			DRIVE TIMES
	1 Mile	3 Miles	5 Miles	10 Mins
Population:	360	2,629	4,636	3,869
Households:	158	1,010	1,826	1,507
Med HH Income:	\$43,310	\$59,676	\$64,789	\$62,976

TRAFFIC DATA:

*AVERAGE DAILY TRAFFIC (ADT) ON HWY 78 IS 5,703

