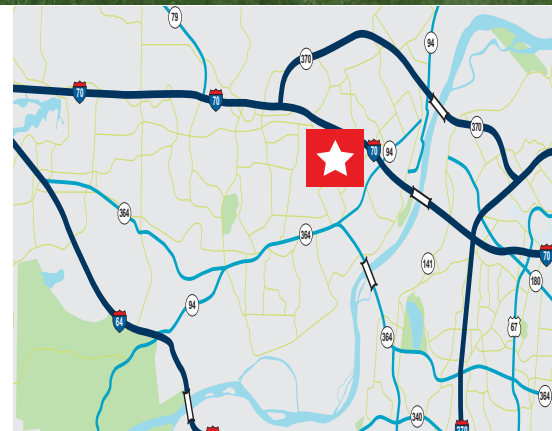




2757 Plaza Way, St. Charles, Missouri 63303

Property Highlights

- Adjacent to Regency Plaza, Sam's Club, Wal-Mart, and Wall Street I Office Center
- Building Site on Prime 0.64 Acre Corner Lot
- Adjacent 2.61 Acres Also Available - Call Broker for Details
- Constructed in 1989
- 2015 Real Estate Taxes = \$8,393
- **Sale Price: ~~\$525,000~~ \$349,000 (\$74.89/SF)**

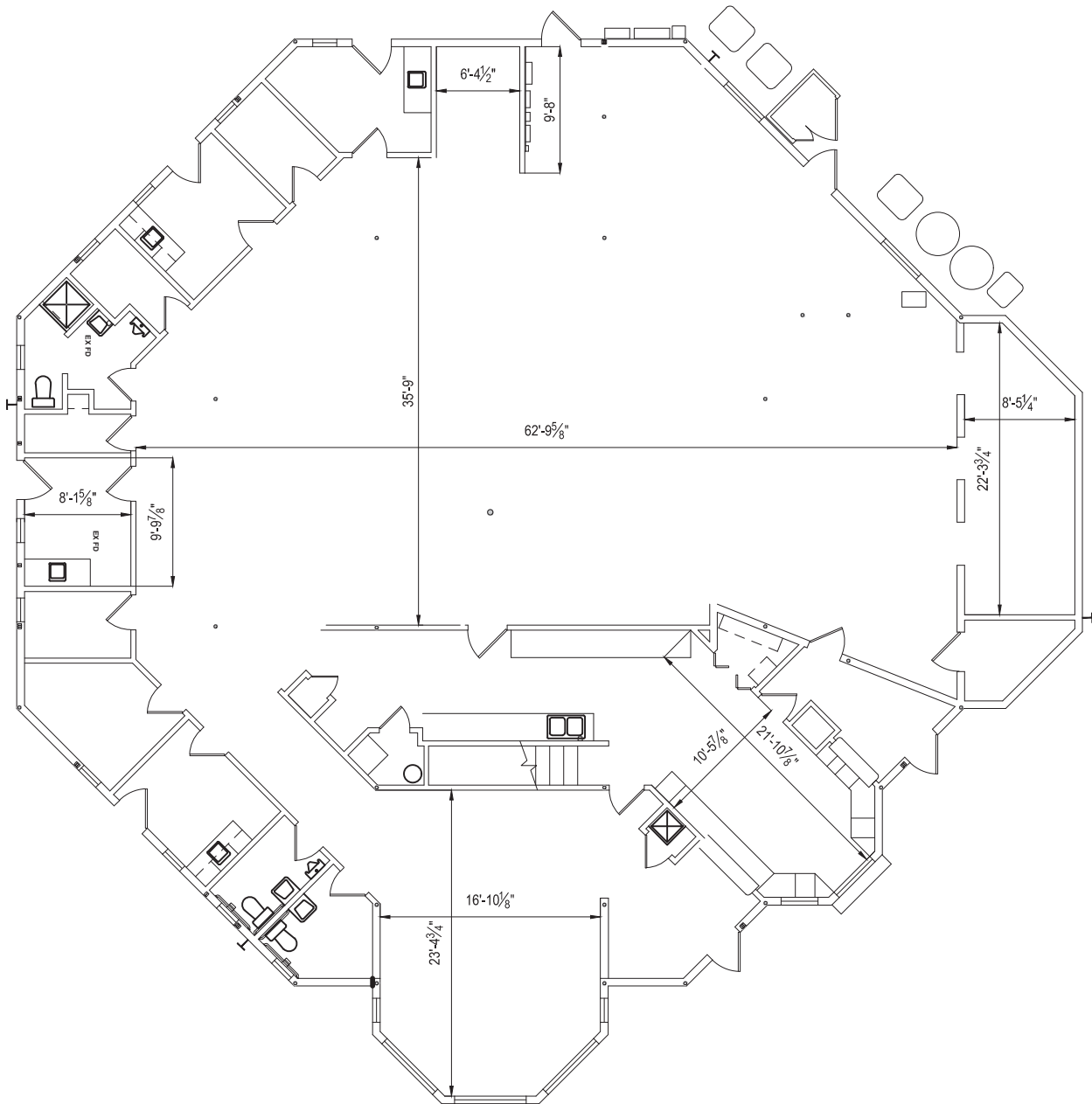


Keith Schneider
Senior Vice President
+1 314 520 2747
keith.schneider@cushwake.com

1551 Wall Street, Suite 200
St. Charles, MO 63303
main +1 636 949 9797
fax +1 636 949 8955
cushmanwakefield.com



Floor Plan



Keith Schneider
Senior Vice President
+1 314 520 2747
keith.schneider@cushwake.com

1551 Wall Street, Suite 200
St. Charles, MO 63303
main +1 636 949 9797
fax +1 636 949 8955
cushmanwakefield.com

Aerial



Keith Schneider
Senior Vice President
+1 314 520 2747
keith.schneider@cushwake.com

1551 Wall Street, Suite 200
St. Charles, MO 63303
main +1 636 949 9797
fax +1 636 949 8955
cushmanwakefield.com