

Medical Office Space for Lease

**Holladay welcomes new tenants:
Franciscan Physician Network
Pediatrics, Primary Care, and OB-GYN
and Howard Psychiatry**



Located at St. Margaret Health Campus
2150 Gettler Street
Dyer, IN 46311
p. 219-764-3104 | f. 219-764-0446
moconnor@holladayproperties.com
www.holladayhealth.com

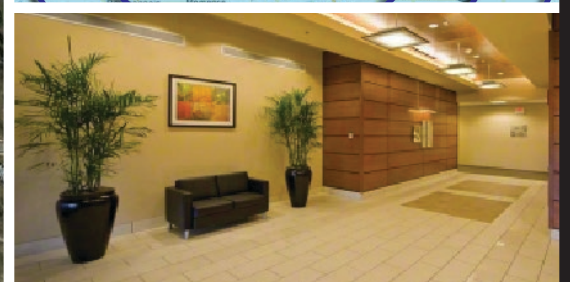
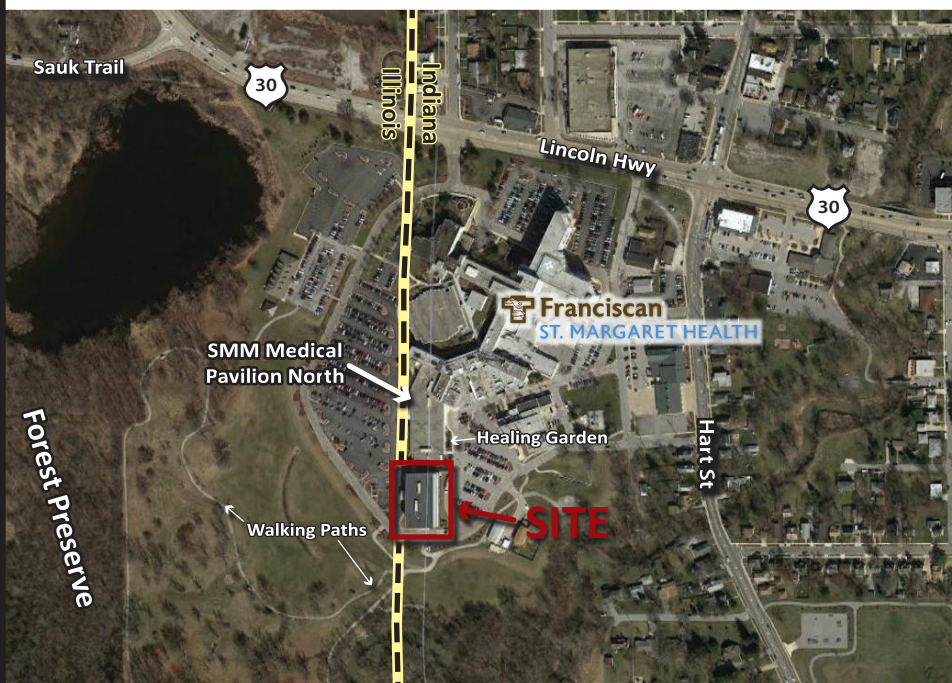
Medical Pavilion South

67,658 sq. ft. Class A Medical Office Building



Building Features

- Suites built to suit
- Last available space!
Suite 120 - 1,644 RSF
- On campus with covered link to St. Margaret Health
- Newer, Class A building
- Spectacular views of adjacent park and Forest Preserve
- Professionally managed by Holladay Properties, a nationally recognized A.M.O.



Additional Benefits

Located in affluent, Dyer, Indiana

Less than 1 minute to Illinois state line & under 30 minutes to Chicago

The only Class A medical office building located on a hospital campus in Northwest Indiana

Dialysis, Pediatrics, Primary Care, OB-GYN, Senior Wellness Center, Cardiology, & Psychiatry now practicing in the building

Covered link connects your space to hospital

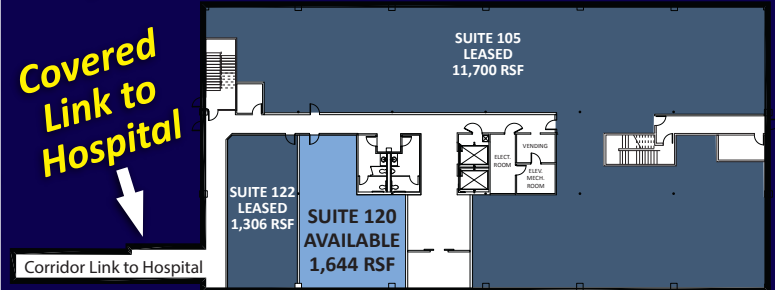
Affiliation offers fast tract access to staffing privileges at Franciscan Alliance

On-site referral base

Nationally recognized Property Management



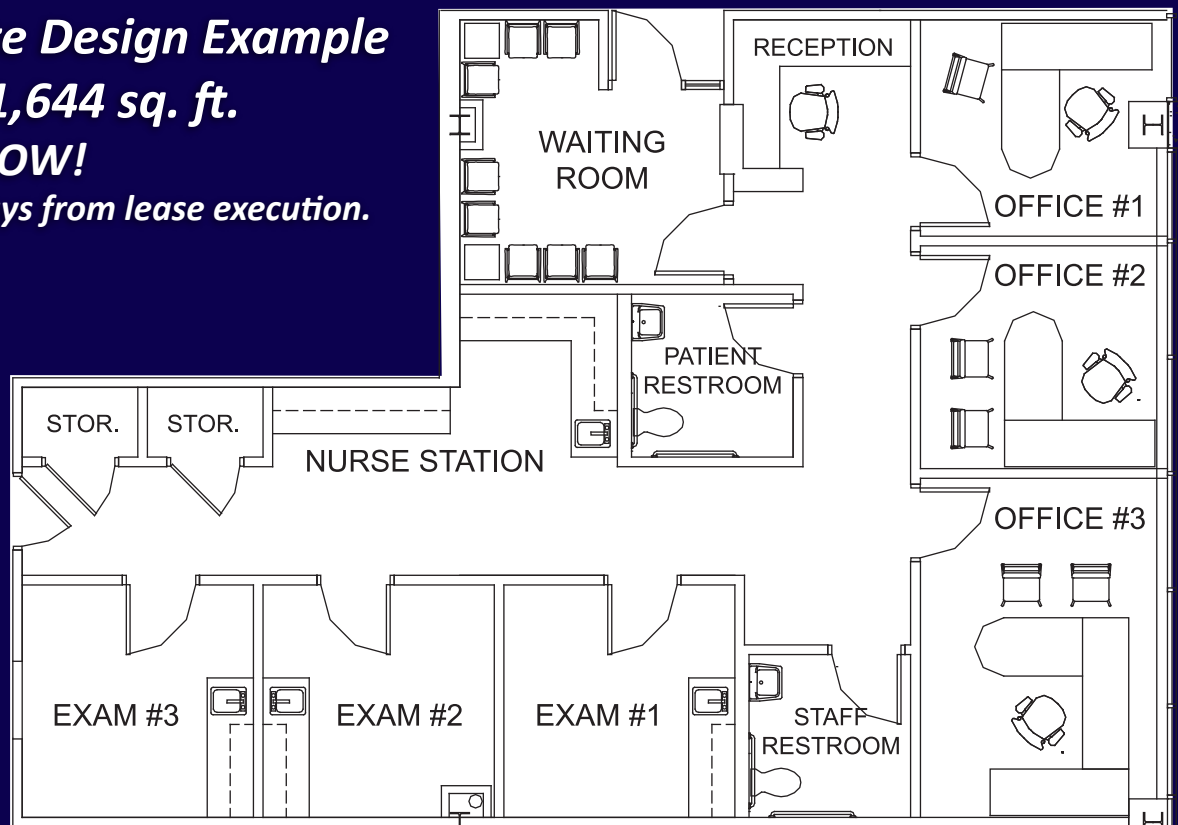
Sample Floor Plan: First Floor



Custom Suite Design Example Suite 120 - 1,644 sq. ft.

AVAILABLE NOW!

Occupancy 90 days from lease execution.



For more information contact:

Michael C. O'Connor
VP - Development & Leasing

p: 219-764-3104 | e: moconnor@holladayproperties.com

web: www.holladayproperties.com | www.holladayhealth.com

