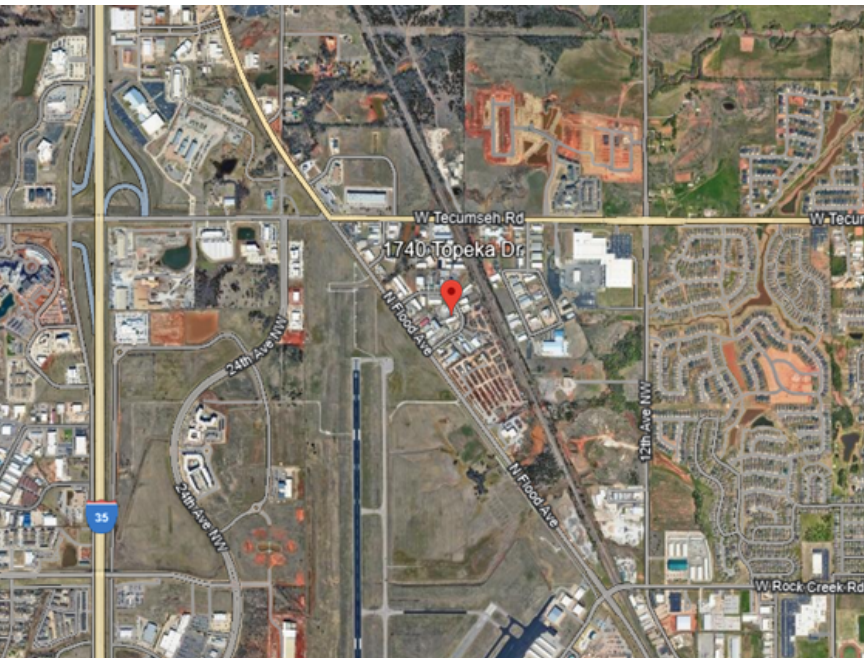


**FOR LEASE**



**AVAILABLE: 9,200 SQUARE FEET**

**1740 TOPEKA DRIVE, NORMAN, OK 73069**



## PROPERTY FEATURES

- ✓ Total SF: 9,200
- ✓ Office SF: 1,000
- ✓ 13' - 16' Clear Height
- ✓ 3 Grade Level Doors
- ✓ Power: 240 volts
- ✓ Fenced Outside Storage - 0.25 ac

**LEASE RATE**  
**\$9.00 NNN**

### TUCKER CASON

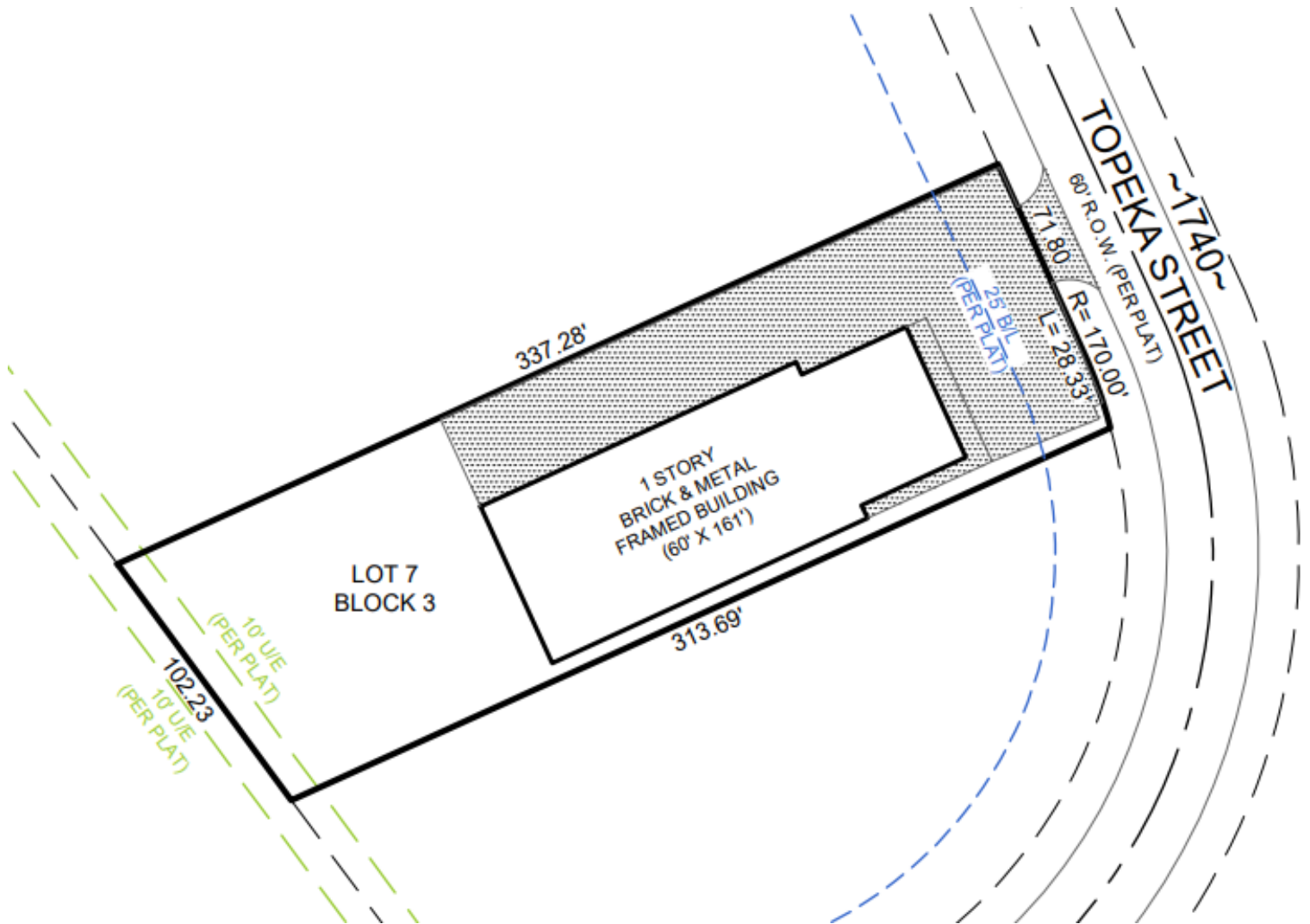
Vice President  
405-323-8508  
tcason@mercerc-company.com

### KADEN GFELLER

Associate  
405-706-6872  
kgfeller@mercerc-company.com

# AVAILABLE: 9,200 SQUARE FEET

1740 TOPEKA DRIVE, NORMAN, OK 73069



## TUCKER CASON

Vice President

C: 405-323-8508

O: 405-768-2848



## KADEN GFELLER

Associate

C: 405-706-6872

O: 405-768-2848

The information contained herein has been given to us by the owner of the property or other sources we deem reliable. We have no reason to doubt its accuracy, but we do not guarantee it. All information should be verified before purchase or lease.