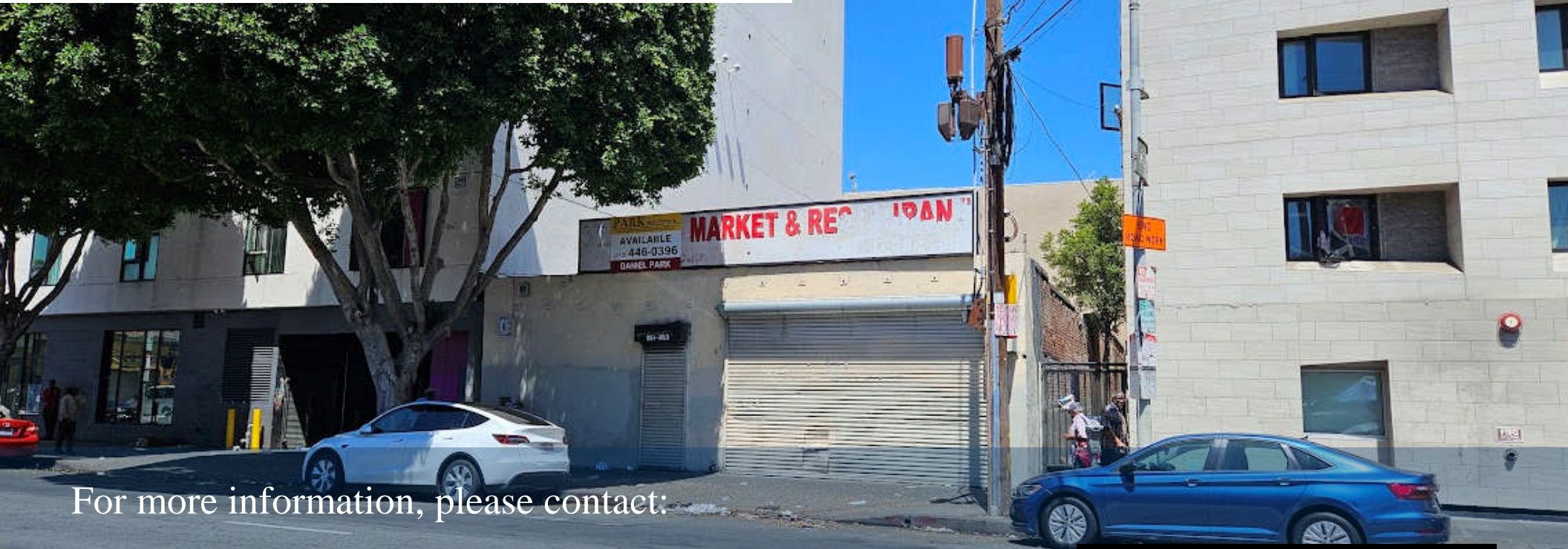


FOR SALE

**653 S SAN PEDRO ST
LOS ANGELES, CA 90014**

**±4,368 SF
RETAIL BUILDING**



For more information, please contact:

Daniel Park

(213) 446-0396

Danielpark777@hotmail.com

DRE# 01227056

PARK INDUSTRIAL
SPECIALIZING IN INDUSTRIAL REAL ESTATE SERVICES

Park Industrial Realty
800 McGarry St, 5th Floor
Los Angeles, CA 90021
Corporation DRE# 01983713

Building SF:	4,368 SF	• Prime location in the heart of Downtown LA Skid Row district
Land SF:	4,533 SF	
Year Built:	1907	• Excellent potential for a neighborhood market or retail storefronts
Zoning:	R5	• Ideal site for affordable or supportive housing development
Opportunity Zone:	Yes	
APN:	5148-025-010	• Surrounded by major residential and service facilities such as SP7 Apartments, Rainbow Apartments, The Yankee Hotel, Abbey Apartments, The Midnight Mission and Donna and John Crean Center
Sale Price:	\$1,000,000	
Sale Price/SF:	\$228.94	

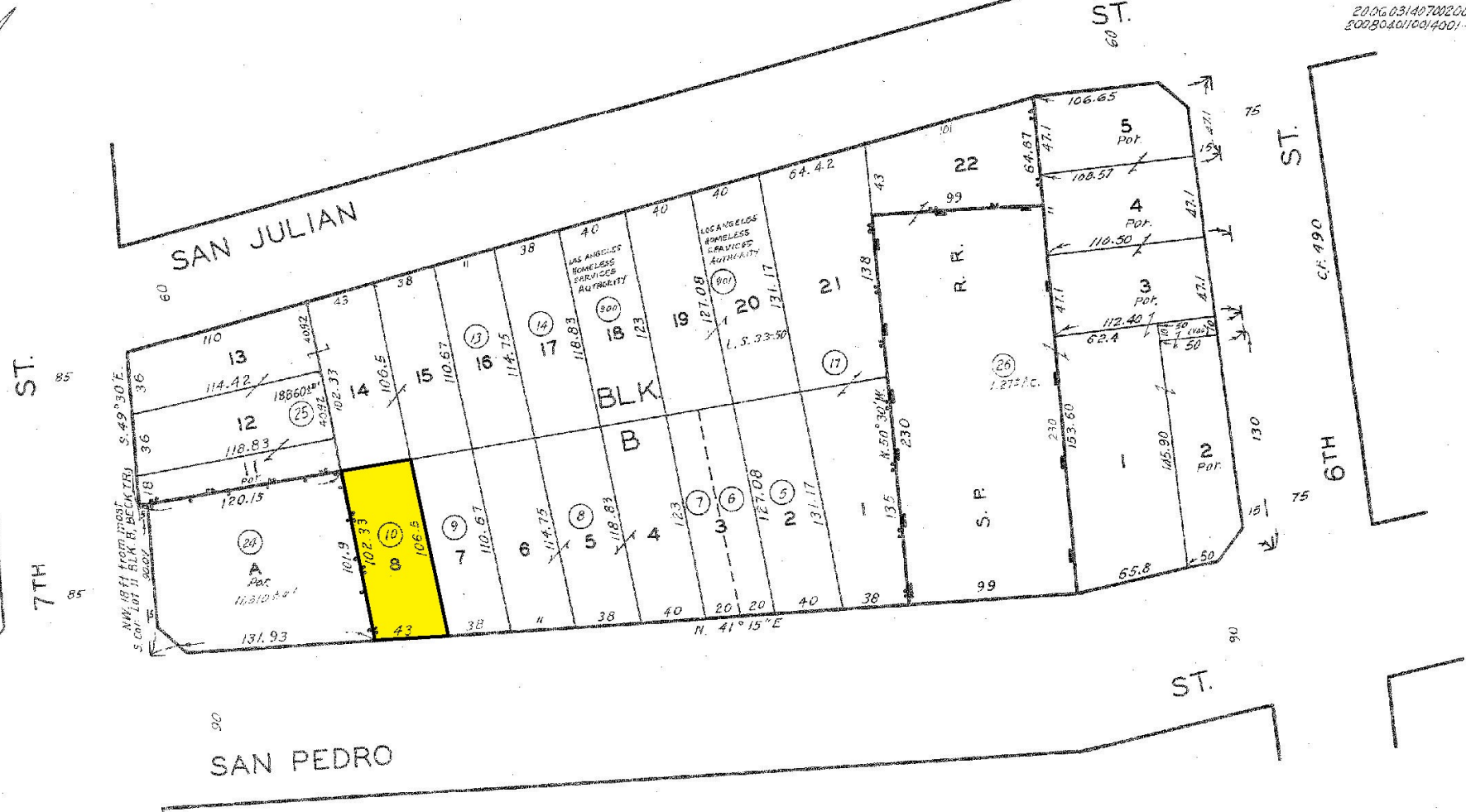
All information has been furnished from sources which we deem reliable, but for which we assume no liability. All measurements are approximate. Broker/Owner do not warrant its accuracy. Buyer/Lessee must verify all information.

5148 25

SCALE 1" = 60'

2008

10-6-83
66 11 10
REF ID: A740730212
75/222
750322006
781124209
862508606
9802250801002-23
021023
2006.03/407002001-23
200804010014001-23



CODE
13263

BECK TRACT
M.R. 14-34

BULLIS 6TH ST. TRACT
M.R. 14-94

TRACT NO. 6011
M.B. 113-49

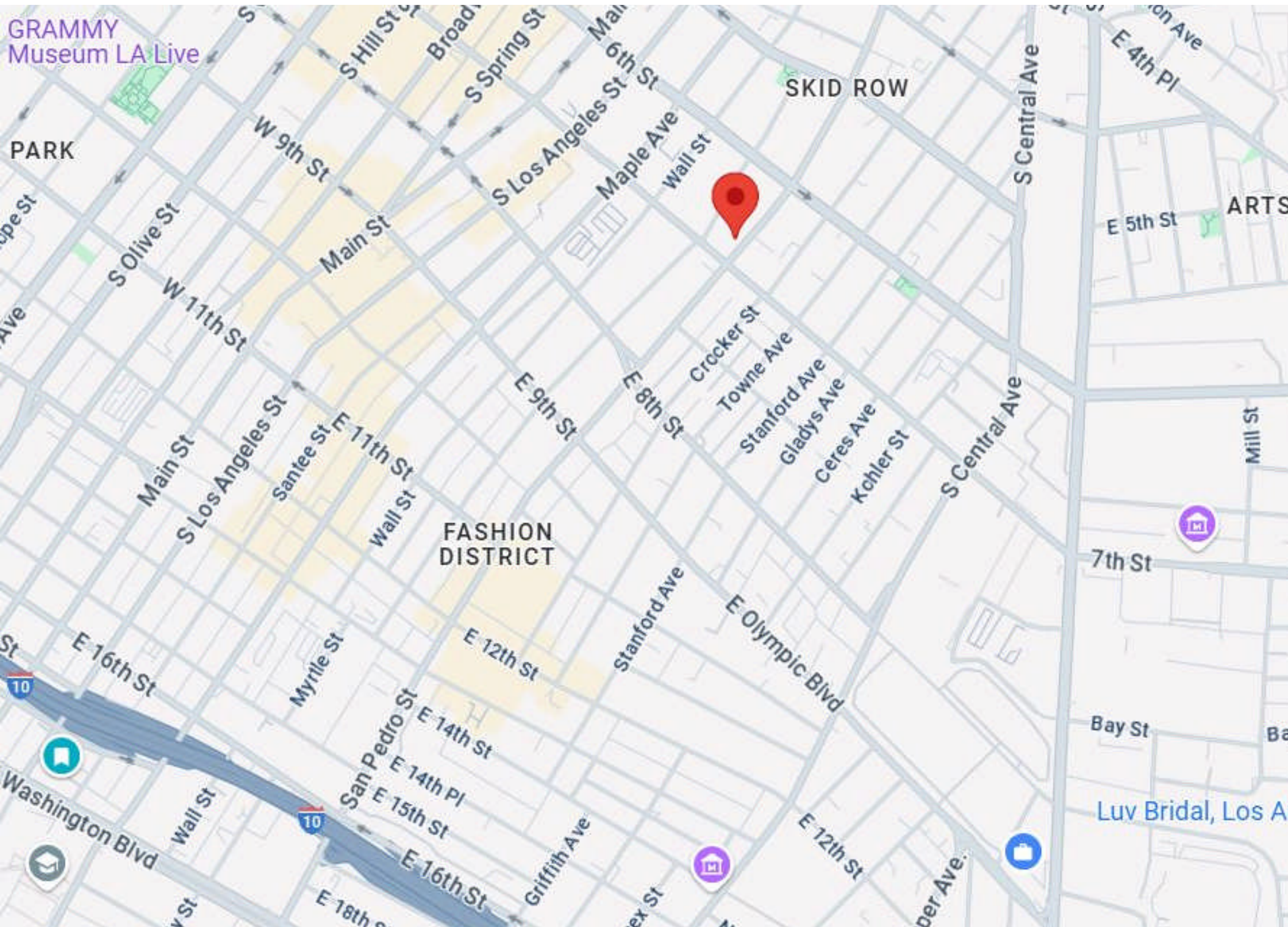
CITY LANDS OF LOS ANGELES
M.R. 2-504-505

ASSESSOR'S MAP
COUNTY OF LOS ANGELES, CALIF.

FOR PREV. ASS'M'T. SEE: 21-7, 12, 35 & 47

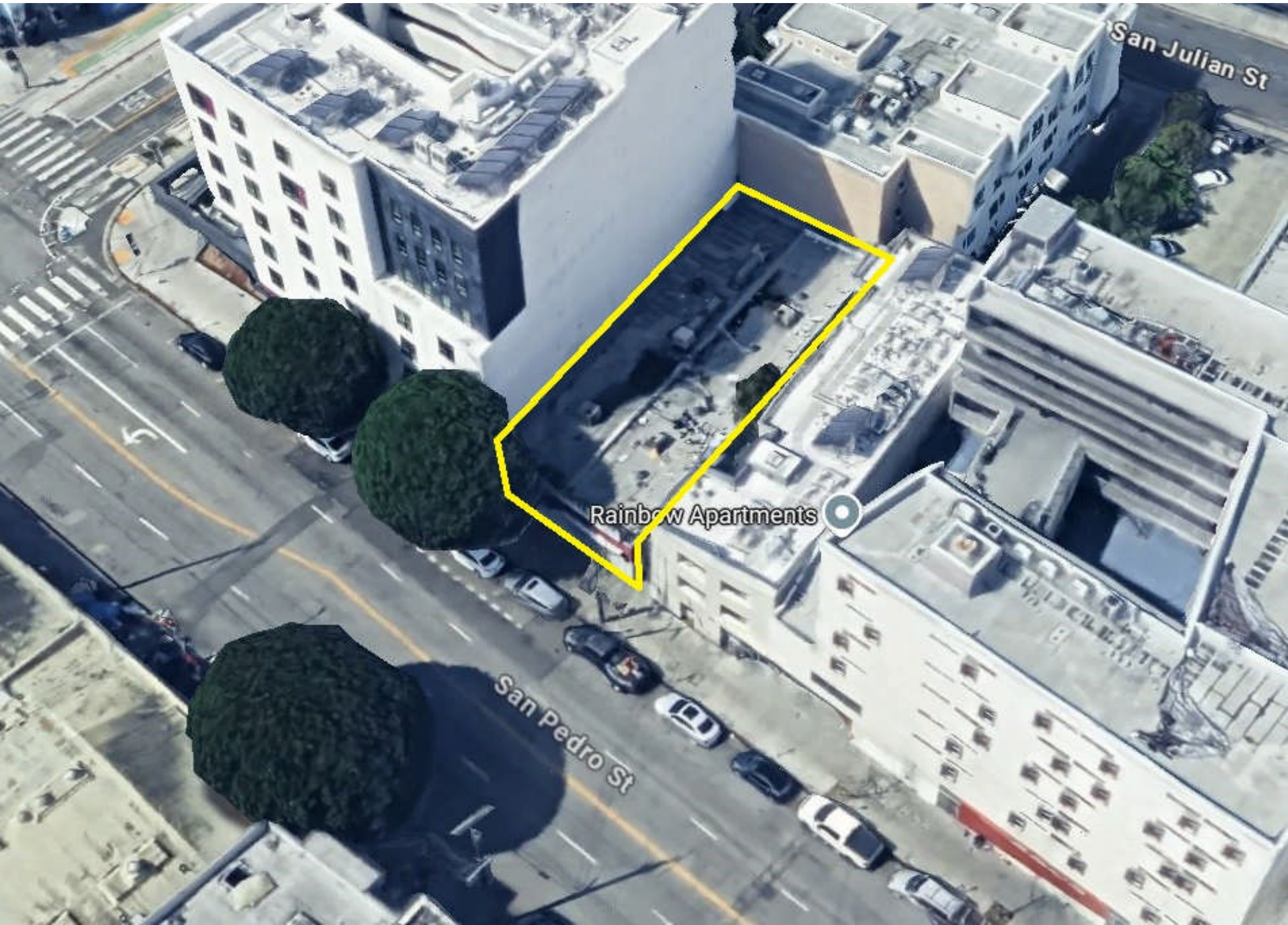
FOR SALE | ±4,368 SF Retail Building

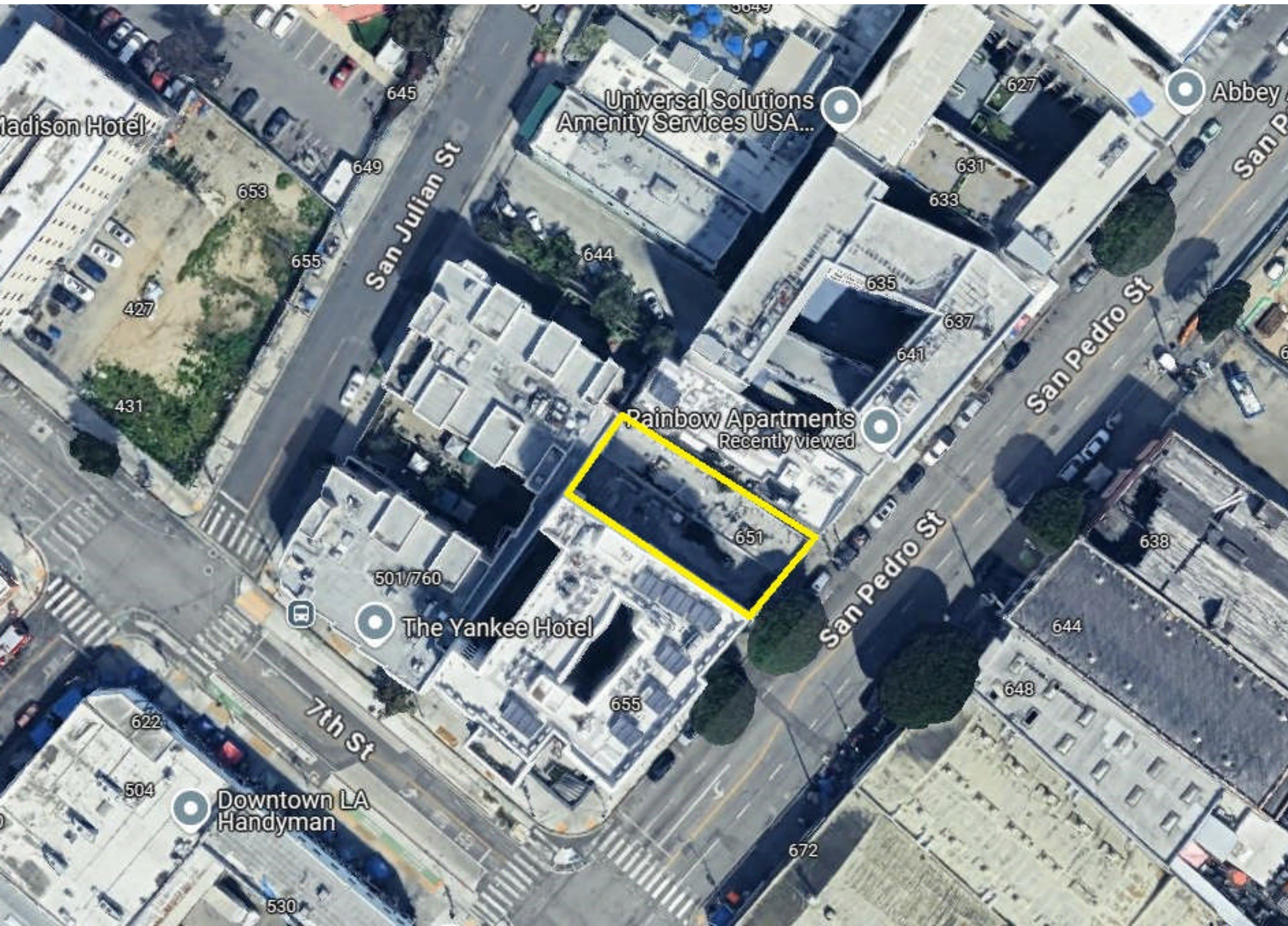
653 S San Pedro Street



FOR SALE | ±4,368 SF Retail Building

653 S San Pedro Street







FOR SALE | ±4,368 SF Retail Building

653 S San Pedro Street

