

FOR SALE

Bry Lynn Holdings

110 Bry Lynn Drive, West Melbourne Florida, 32904

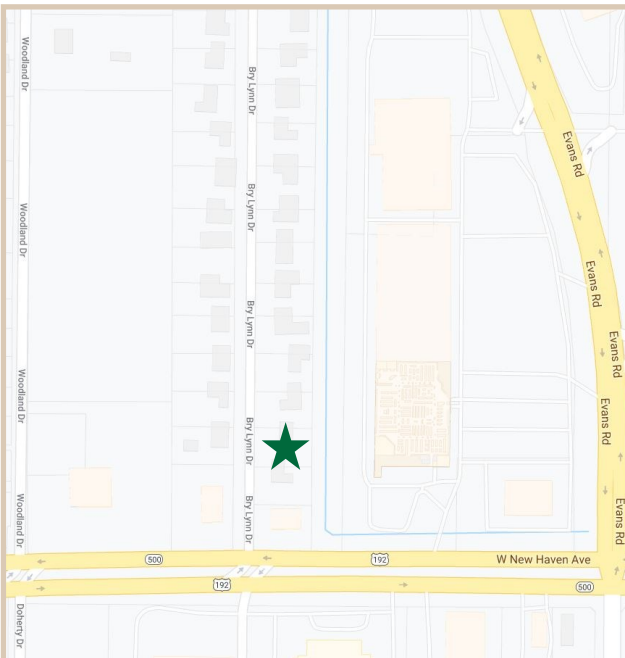
PROPERTY FACTS

Building Area:	2,284 Sq. Ft.
# of units in Building:	One Unit
Parking:	11
Construction:	Wood Frame
Roof:	Asphalt Shingle
Utilities:	City Water/ Sewer
Zoning:	CP- Commercial Parkway
Year Built:	1973
Land Size:	.31 Acres



PROPERTY HIGHLIGHTS

Price	\$474,900.00
Parking & Access	There are eleven (11) parking spots located behind and on the side of the building with easy access in and out.
Location	Located right off of W New Haven Avenue on Bry Lynn Drive. Located three (3) miles away from I-95 on ramp..
Aesthetics	Extensive interior and exterior renovation. These renovations include new paint and carpeting.



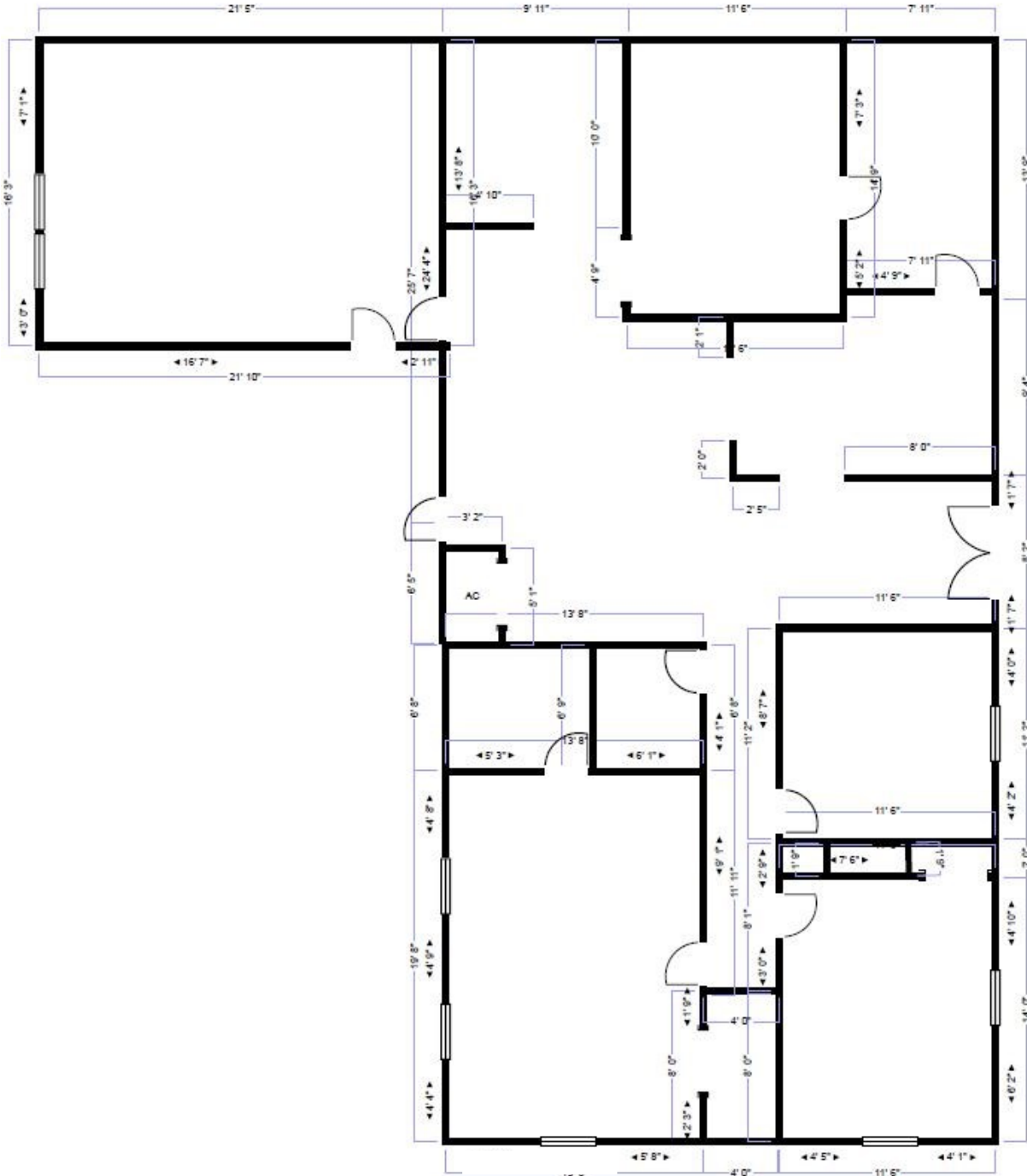
CHARLES A. VON STEIN, INC.
*Commercial Property Management,
Sales & Leasing Specialists since 1963*
626 Old Dixie Highway SW
Vero Beach, FL 32962
www.vscre.com

CONTACT INFO:
Brevard County: 321.725.1961
Indian River County: 772.778.4885
Fax: 772.778.4908
Leasing: leasing@vscre.com

LAYOUT

Bry Lynn Holdings

110 Bry Lynn Drive, West Melbourne Florida, 32904



2,284 SF



CHARLES A. VON STEIN, INC.
Commercial Property Management,
Sales & Leasing Specialists since 1963
626 Old Dixie Highway SW
Vero Beach, FL 32962
www.vscre.com

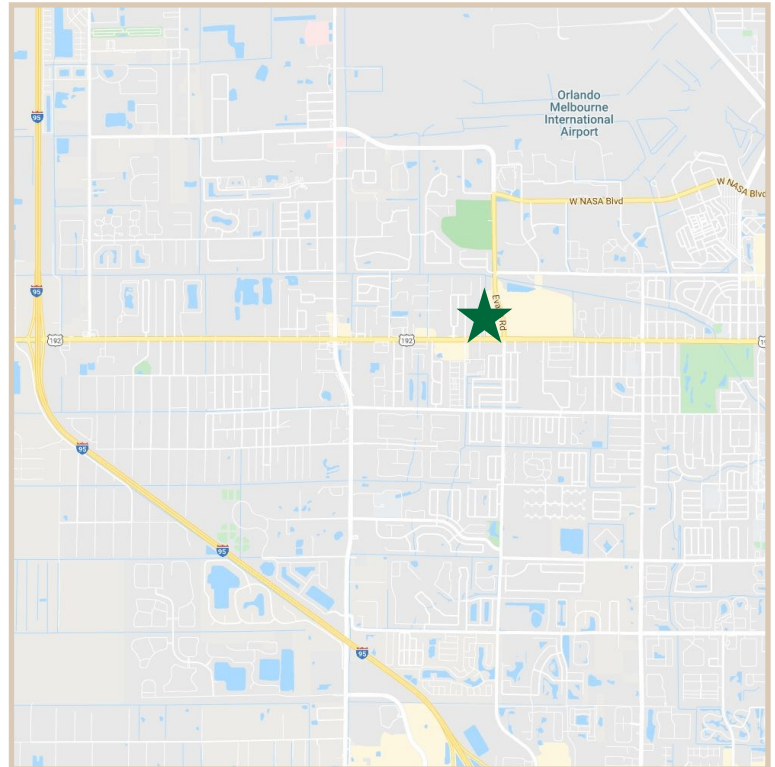
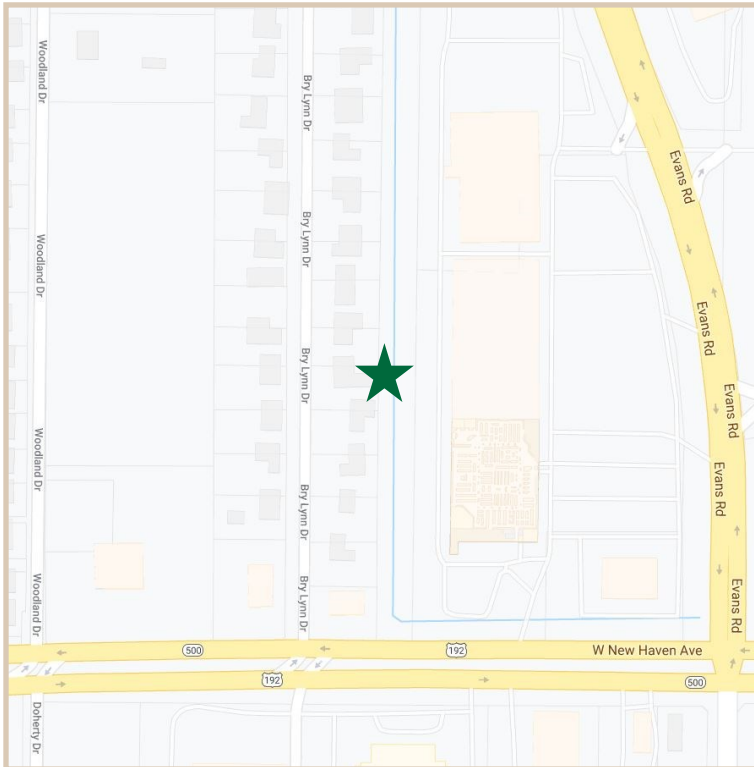
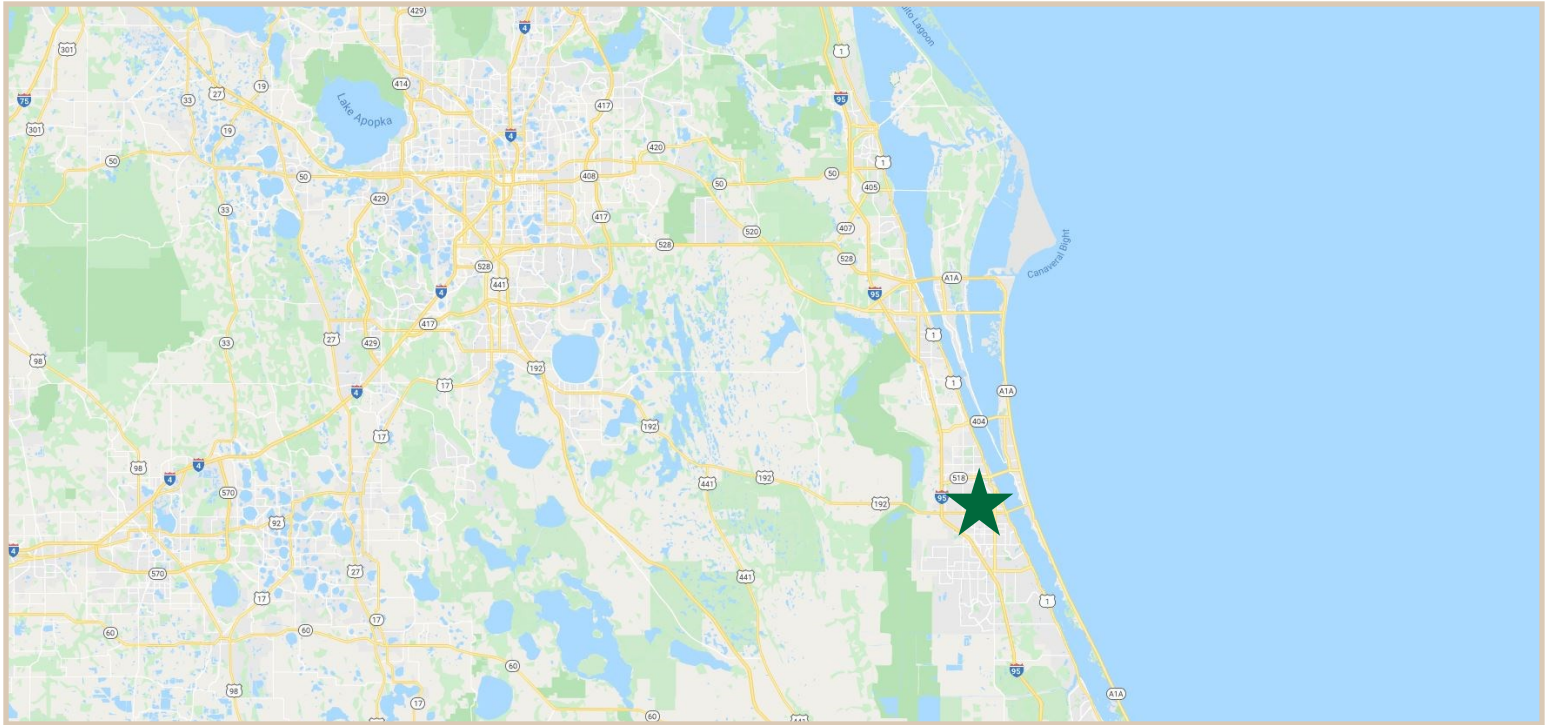
CONTACT INFO:

Brevard County: 321.725.1961
Indian River County: 772.778.4885
Fax: 772.778.4908
Leasing: leasing@vscre.com

LOCATION MAPS

Bry Lynn Holdings

110 Bry Lynn Drive, West Melbourne Florida, 32904



CHARLES A. VON STEIN, INC.
*Commercial Property Management,
Sales & Leasing Specialists since 1963*
626 Old Dixie Highway SW
Vero Beach, FL 32962
www.vscrc.com

CONTACT INFO:

Brevard County: 321.725.1961
Indian River County: 772.778.4885
Fax: 772.778.4908
Leasing: leasing@vscrc.com

ADDITIONAL PICTURES

Bry Lynn Holdings

110 Bry Lynn Drive, West Melbourne Florida, 32904



CHARLES A. VON STEIN, INC.
*Commercial Property Management,
Sales & Leasing Specialists since 1963*
626 Old Dixie Highway SW
Vero Beach, FL 32962
www.vscre.com

CONTACT INFO:

Brevard County: 321.725.1961
Indian River County: 772.778.4885
Fax: 772.778.4908
Leasing: leasing@vscre.com