

NEW LONDON MALL

THE ATRIUM OFFICES

FOR LEASE @ \$20.00/SQFT



THE ATRIUM OFFICES @ NEW LONDON MALL

Located within the New London Mall, The Atrium is an ideal location for your Office needs. Boasting easy access to I-95, a central location, and high traffic counts, The Atrium offers everything your company needs. Close proximity to EB, Pfizer, the Naval Subbase, and a multitude of medical/insurance employers. The Malls tenants include Shop-Rite, Marshalls, Petsmart, and Homegoods. Lunches are easy with multiple restaurants within a five-minute drive. There is even a Staples right across the street! Contact us today for a tour.



Kyle Schrader

860.333.3242

kyle@seaportre.com



Seaport
COMMERCIAL

Dylan LaGrandeur

401.692.0773

dylan@seaportre.com



UNIT 20

2500 SQUARE FEET

FOR LEASE



THE ATRIUM OFFICES UNIT 20

Right off the elevator, unit 20 offers 2500 square feet of bright, airy space. Perfect for engineering, software, or insurance operations. With ten rooms for offices or consultations, as well as a large open space/conference area. Separate reception area and wide hallway round out the space.

[Click here for Virtual Tour](#)



Kyle Schrader

860.333.3242

kyle@seaportre.com



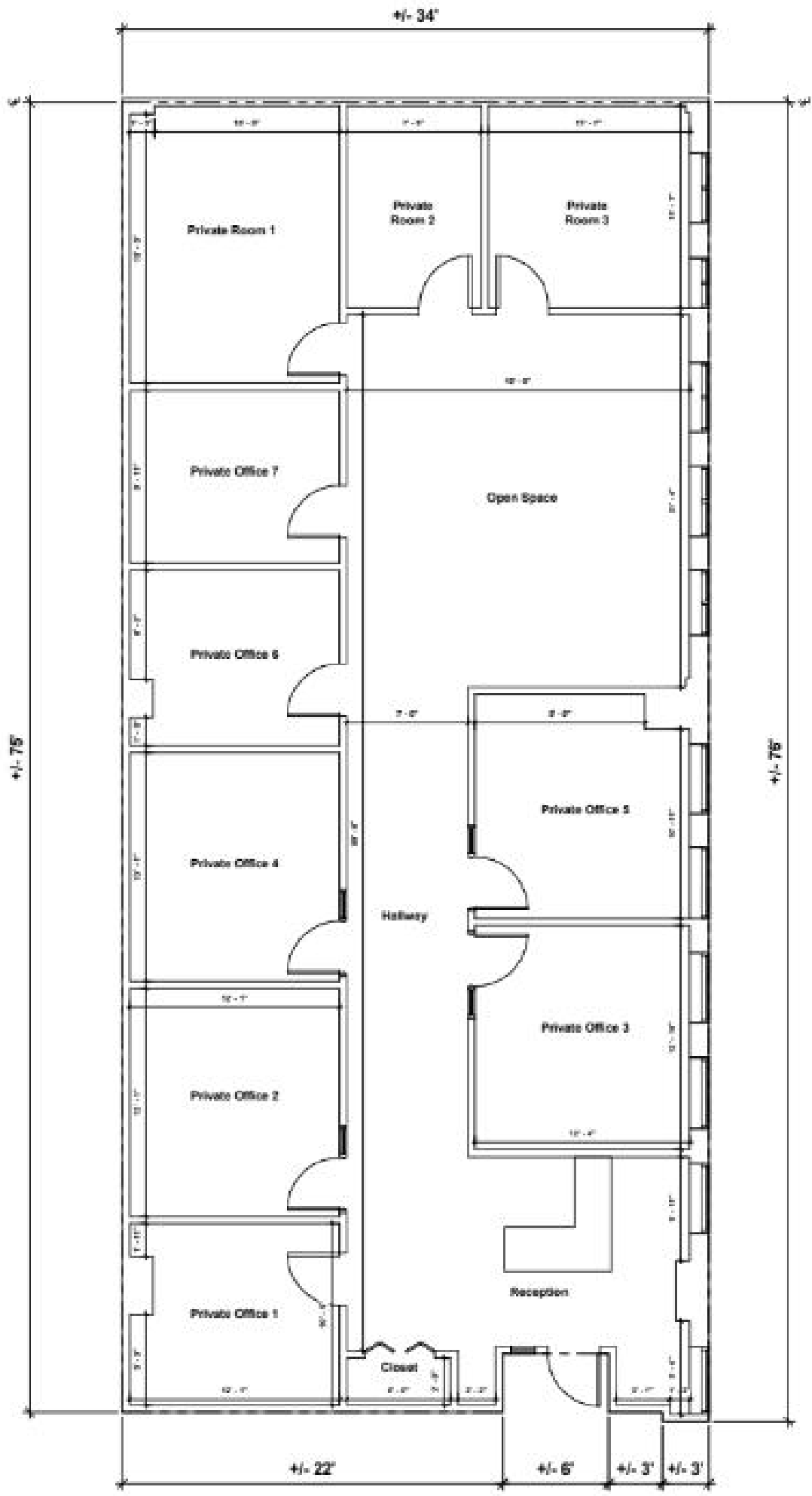
Seaport
COMMERCIAL

Dylan LaGrandeur

401.692.0773

dylan@seaportre.com





UNIT 23

1508 SQUARE FEET

FOR LEASE



THE ATRIUM OFFICES UNIT 20

Unit 23 offers 1508 square feet of wide open space. Perfect for startups, software, or insurance operations. With two separate rooms for offices or consultations, as well as a large open space/conference area. Would make an outstanding podcast/streaming studio or media space.

[Click here for Virtual Tour](#)



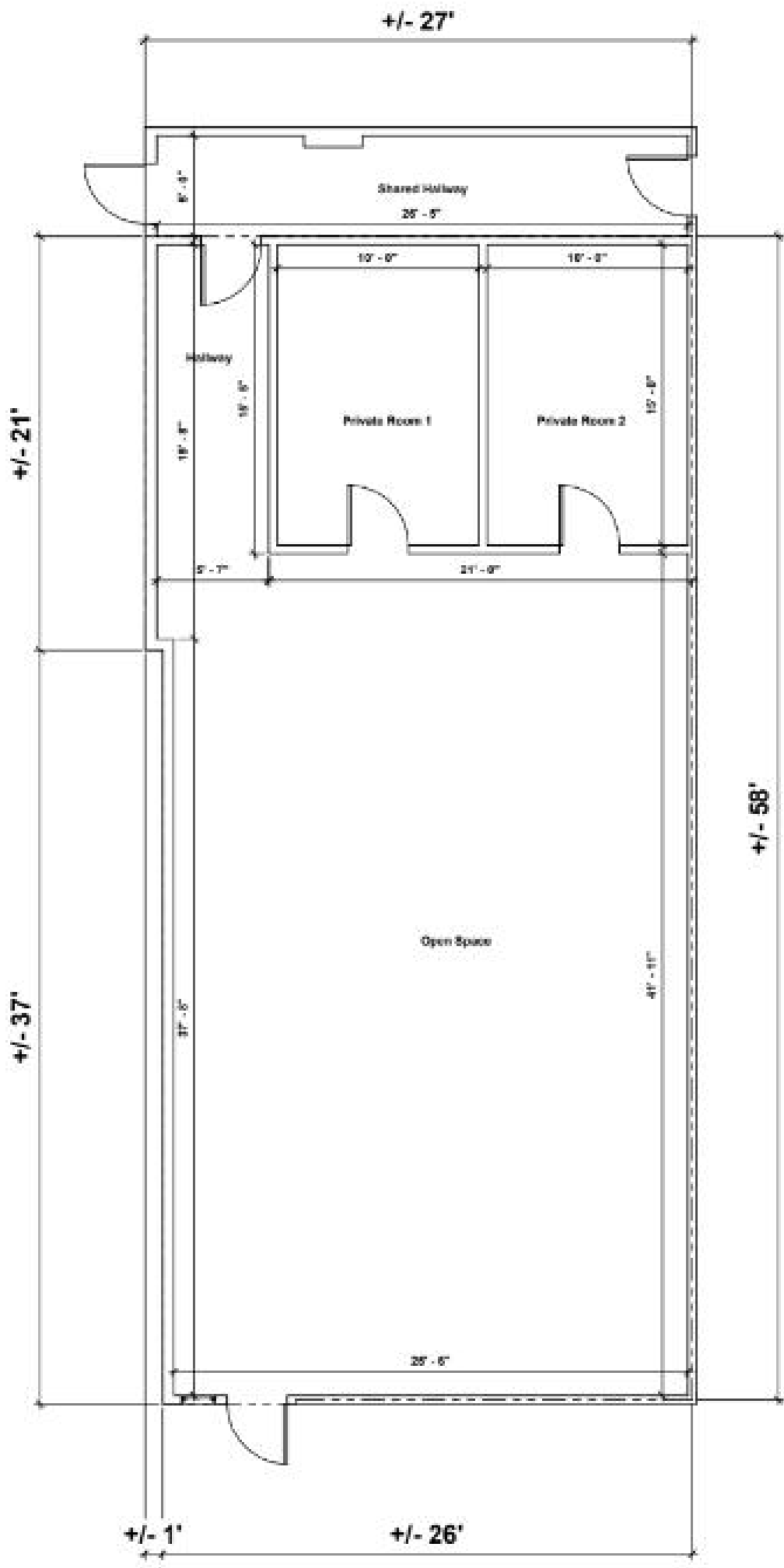
Kyle Schrader
860.333.3242
kyle@seaportre.com



Seaport
COMMERCIAL

Dylan LaGrandeur
401.692.0773
dylan@seaportre.com





NEW LONDON MALL

THE ATRIUM OFFICES

FOR LEASE

ATRIUM OFFICES at New London Mall



Kyle Schrader
860.333.3242
kyle@seaportre.com



Seaport

COMMERCIAL

Dylan LaGrandeur
401.692.0773
dylan@seaportre.com

