

10277 VENICE AVENUE, STURTEVANT

39' CLEAR SUBLEASE

FOR
SUBLEASE

AVAILABLE
NOW

157,391 SF



CUSHMAN &
WAKEFIELD

BOERKE
www.boerke.com

JEFF HOFFMAN
PRINCIPAL
414.322.4778
jhoffman@boerke.com

CHAD VANDE ZANDE
PRINCIPAL
414.203.3049
cvandezande@boerke.com

NICK UNGER
PRINCIPAL
262.352.6943
nunger@boerke.com

LINDSEY COAKLEY
REAL ESTATE ADVISOR
414.430.8183
lcoakley@boerke.com

MILWAUKEE OFFICE
731 N Jackson Street
Suite 700
Milwaukee, WI 53202

MADISON OFFICE
33 E Main Street
Suite 241
Madison, WI 53703



PROPERTY DETAILS

Building Size:	196,875 SF
Available SF:	157,391 SF
Office Space:	+2,500 SF
Year Built:	2002
Site Size:	16.08 Acres
Zoning:	Industrial/Business Park
Clear Height:	39'
Loading:	20 Docks, 2 Drive-Ins
Sprinkler:	ESFR
Power:	3,000 Amps 480/277V
Lighting:	LED
Parking:	+108 Car Parks, +-50 Trailer Stalls
Internet Service Provider:	AT&T, Charter / Spectrum
Availability:	Immediate
Term:	Current lease expires 2/28/2031

ECONOMICS

Projected OPEX:	\$1.70 / SF
Lease Rate:	\$4.93 / SF NNN



157,391
SF

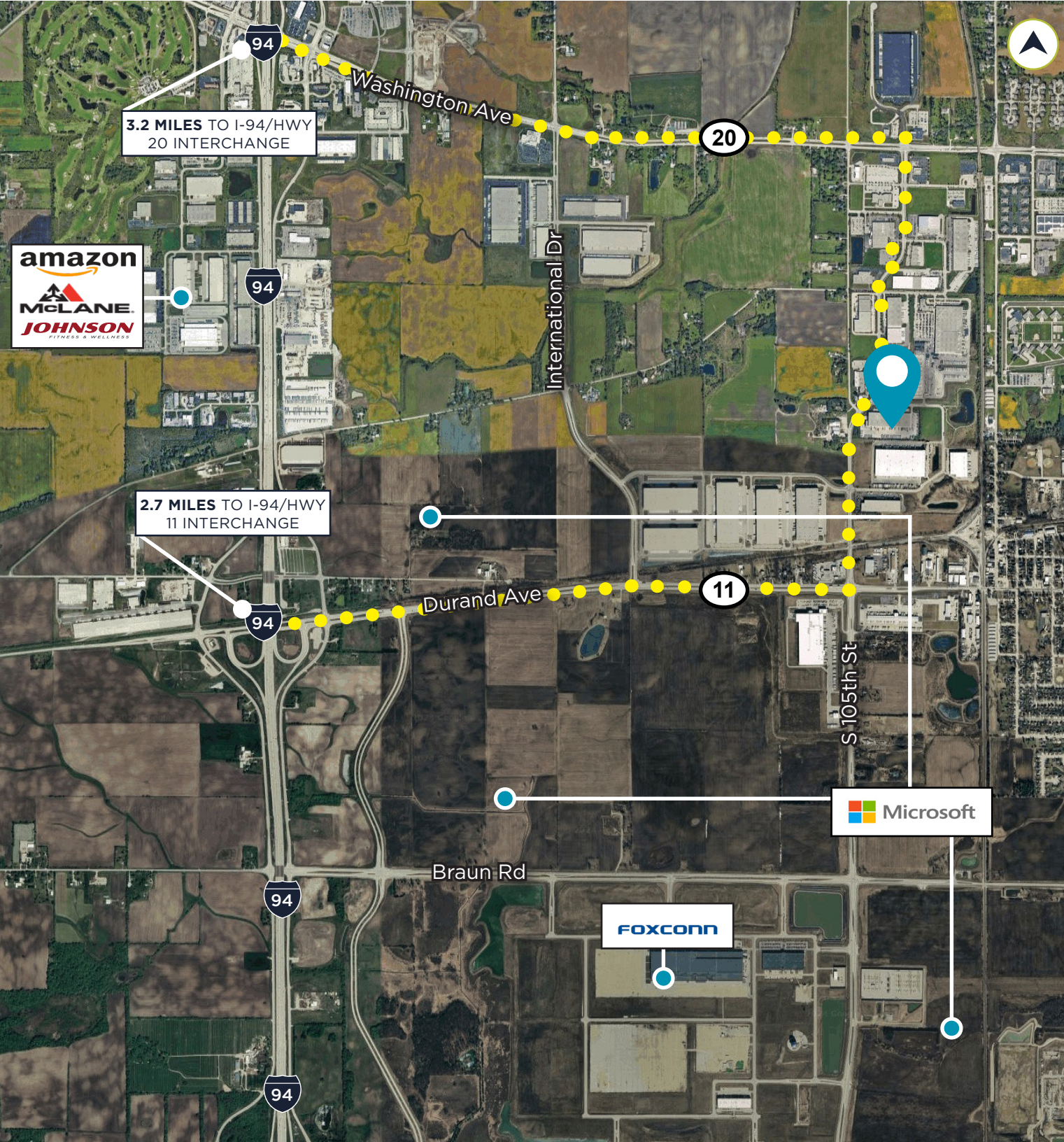
AVAILABLE

39'
CLEAR

20
DOCKS

2
DRIVE-INS

AERIAL
VIEW



3.2 MILES TO I-94/HWY 20 INTERCHANGE

amazon
MCLANE
JOHNSON
FITNESS & WELLNESS

2.7 MILES TO I-94/HWY 11 INTERCHANGE

Microsoft

FOXCONN

21 MILES
MKE INTL. AIRPORT

27 MILES
MILWAUKEE

39 MILES
WAUKESHA

56 MILES
O'HARE INTL. AIRPORT

69 MILES
CHICAGO

102 MILES
MADISON

129 MILES
APPLETON

143 MILES
GREEN BAY

STATE OF WISCONSIN

DISCLOSURE TO NON-RESIDENTIAL CUSTOMERS

Prior to negotiating on your behalf the brokerage firm, or an agent associated with the firm, must provide you the following disclosure statement:

DISCLOSURE TO CUSTOMERS

You are a customer of the brokerage firm (hereinafter Firm). The Firm is either an agent of another party in the transaction or a subagent of another firm that is the agent of another party in the transaction. A broker or a salesperson acting on behalf of the Firm may provide brokerage services to you. Whenever the Firm is providing brokerage services to you, the Firm and its brokers and salespersons (hereinafter Agents) owe you, the customer, the following duties:

- (a) The duty to provide brokerage services to you fairly and honestly.
- (b) The duty to exercise reasonable skill and care in providing brokerage services to you.
- (c) The duty to provide you with accurate information about market conditions within a reasonable time if you request it, unless disclosure of the information is prohibited by law.
- (d) The duty to disclose to you in writing certain Material Adverse Facts about a property, unless disclosure of the information is prohibited by law. (See Definition of Material Adverse Facts below).
- (e) The duty to protect your confidentiality. Unless the law requires it, the Firm and its Agents will not disclose your confidential information or the confidential information of other parties.
- (f) The duty to safeguard trust funds and proposals in an objective and unbiased manner and disclose the advantages and disadvantages of the proposals. other property held by the Firm or its Agents.
- (g) The duty, when negotiating, to present contract proposals in an objective and unbiased manner and disclose the advantages and disadvantages of the proposals.
- Please review this information carefully. An Agent of the Firm can answer your questions about brokerage services, but if you need legal advice, tax advice, or a professional home inspection, contact an attorney, tax advisor, or home inspector. This disclosure is required by section 452.135 of the Wisconsin statutes and is for information only. It is a plain-language summary of the duties owed to a customer under section 452.133(1) of the Wisconsin statutes.

CONFIDENTIALITY NOTICE TO CUSTOMERS

The Firm and its Agents will keep confidential any information given to the Firm or its Agents in confidence, or any information obtained by the Firm and its Agents that a reasonable person would want to be kept confidential, unless the information must be disclosed by law or you authorize the Firm to disclose particular information. The Firm and its Agents shall continue to keep the information confidential after the Firm is no longer providing brokerage services to you.

- The following information is required to be disclosed by law:
 1. Material Adverse Facts, as defined in Wis. Stat. § 452.01(5g) (see "Definition of Material Adverse Facts" below).
 2. Any facts known by the Firm or its Agents that contradict any information included in a written inspection report on the property or real estate that is the subject of the transaction.

To ensure that the Firm and its Agents are aware of what specific information you consider confidential, you may list that information below. At a later time, you may also provide the Firm or its Agents with other Information you consider to be confidential.

CONFIDENTIAL INFORMATION:

NON- CONFIDENTIAL INFORMATION *(the following information my be disclosed by the Firm and its Agents):*

(Insert information you authorize to be disclosed, such as financial qualification information.)

DEFINITION OF MATERIAL ADVERSE FACTS

A "Material Adverse Fact" is defined in Wis. Stat. § 452.01(5g) as an Adverse Fact that a party indicates is of such significance, or that is generally recognized by a competent licensee as being of such significance to a reasonable party, that it affects or would affect the party's decision to enter into a contract or agreement concerning a transaction or affects or would affect the party's decision about the terms of such a contract or agreement.

An "Adverse Fact" is defined in Wis. Stat. § 452.01(1e) as a condition or occurrence that a competent licensee generally recognizes will significantly and adversely affect the value of the property, significantly reduce the structural integrity of improvements to real estate, or present a significant health risk to occupants of the property; or information that indicates that a party to a transaction is not able to or does not intend to meet his or her obligations under a contract or agreement made concerning the transaction.

NOTICE ABOUT SEX OFFENDER REGISTRY

You may obtain information about the sex offender registry and persons registered with the registry by contacting the Wisconsin Department of Corrections on the Internet at <http://www.doc.wi.gov> or by telephone at 608-240-5830.