



 **JLL** SEE A BRIGHTER WAY

# For sublease

Fully Air-Conditioned Flex/Warehouse

37 Linnell Circle  
Billerica, MA



# Flex/Warehouse available for sublease

# Building specifications

## Premises details

**Availability** ±6,200 SF

**Timing** Immediately

**Term** Through July 2028

**Features** Fully air-conditioned  
Additional mezz space

**Building area** ±12,200 SF

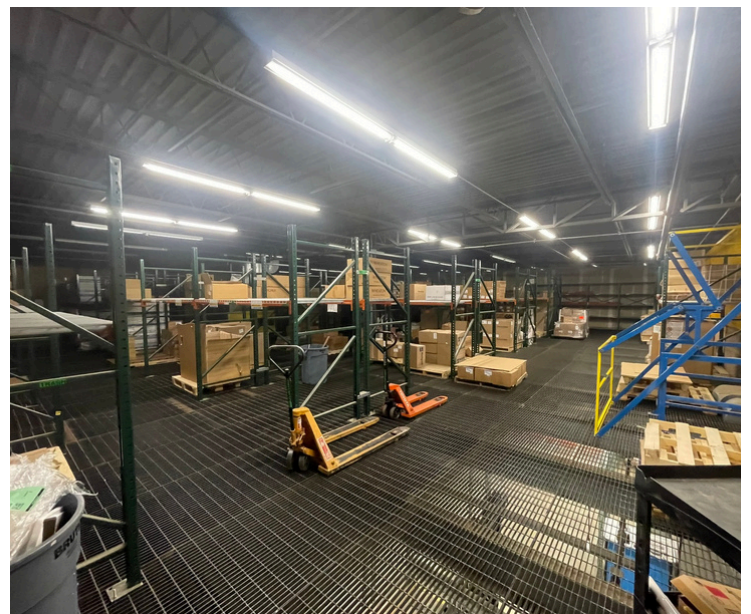
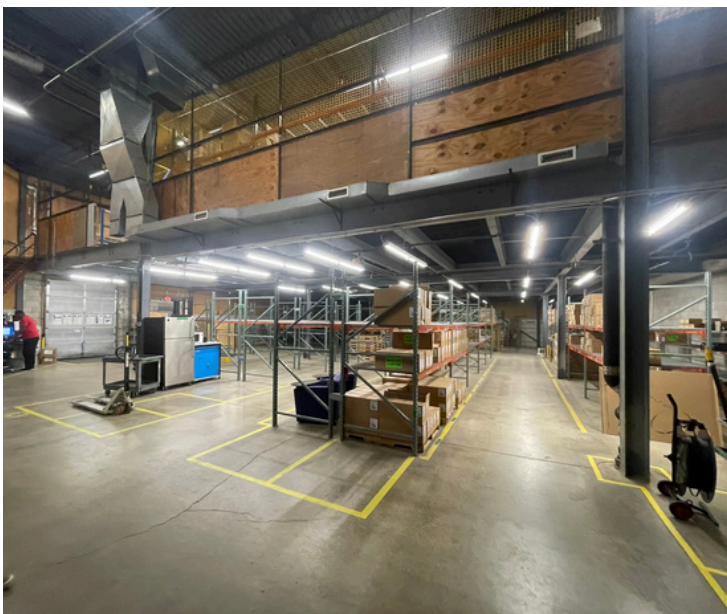
**Year built** 1982

**Car parking** 20 spaces

**Loading** 1 (one) tailboard dock

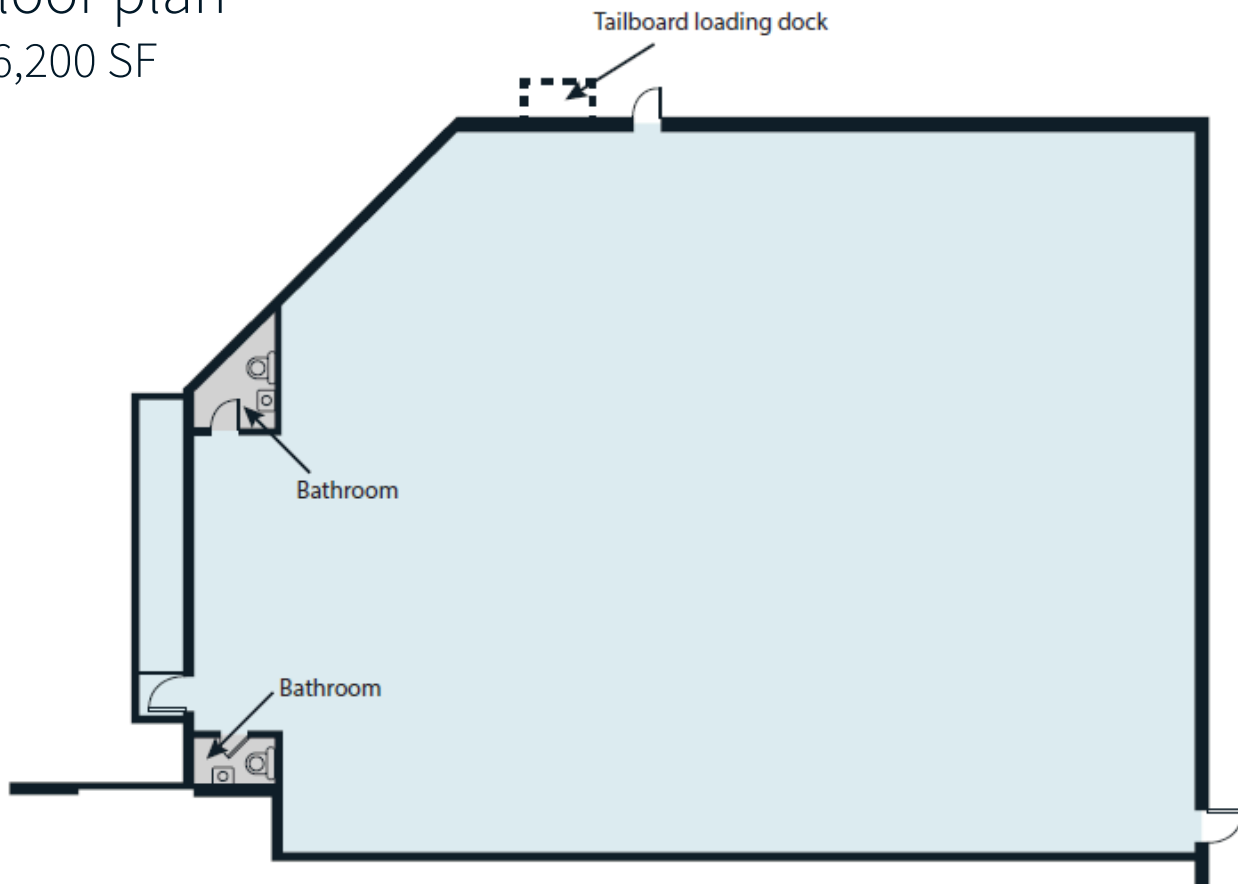
**Clear height** 20'

**Power** 200a



# Floor plan

±6,200 SF



# Aerial



**Jordan Yarboro**

Executive Vice President  
Jordan.Yarboro@jll.com  
+1 617 531 4262

**Zach Gramlich**

Assistant Vice President  
Zach.Gramlich@jll.com  
+1 617 316 6484