

FOR SUBLEASE

CHEHALIS INDUSTRIAL
109 Sears Road, Chehalis, WA 98532



OFFERING SUMMARY

Available SF:	14,136 SF (150 SF Office)
Yard SF:	15,000 SF
Lease Rate:	\$0.75 + NNN
NNN:	est. \$0.07
Loading:	2 GL Doors (16')
Ceiling:	20'
Zoning:	Commercial Industrial

PROPERTY OVERVIEW

The subject space is available now. C-G allows for a variety of commercial and industrial uses. For complete list of permitted uses click here to access Chehalis Municipal Code.

PROPERTY HIGHLIGHTS

- SUBLEASE TERM UNTIL 12/31/2027
- DOCK HIGH PIT
- FENCED AND SECURED
- HEAVY POWER
- SPRINKLERED

Brandon Thomas

206 303 9595

bthomas@cbcworldwide.com

Vladimir Olyanich

425 615 0577

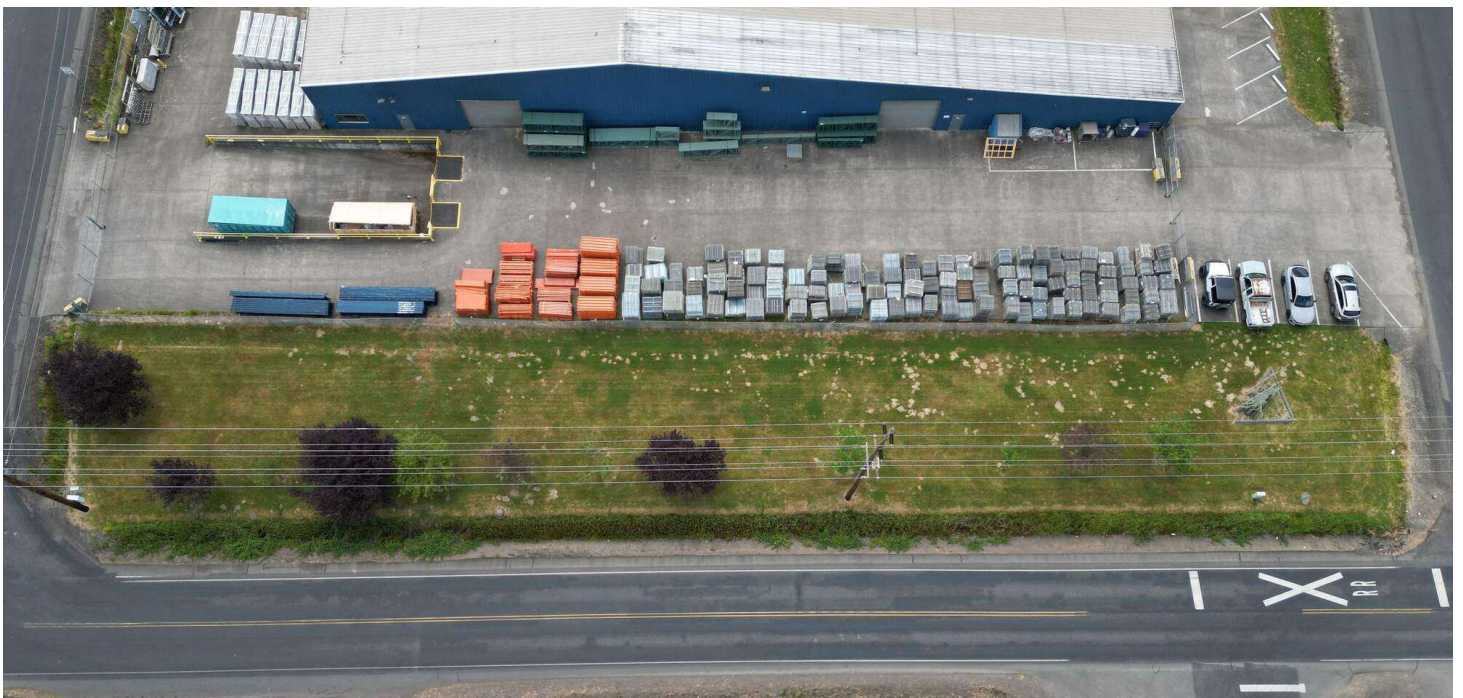
volyanich@cbcworldwide.com



**COLDWELL BANKER
COMMERCIAL**
DANFORTH

FOR SUBLEASE

CHEHALIS INDUSTRIAL
109 Sears Road, Chehalis, WA 98532



Brandon Thomas
206 303 9595
bthomas@cbcworldwide.com

Vladimir Olyanich
425 615 0577
volyanich@cbcworldwide.com



**COLDWELL BANKER
COMMERCIAL**
DANFORTH

FOR SUBLEASE

CHEHALIS INDUSTRIAL
109 Sears Road, Chehalis, WA 98532



Brandon Thomas

206 303 9595

bthomas@cbcworldwide.com

Vladimir Olyanich

425 615 0577

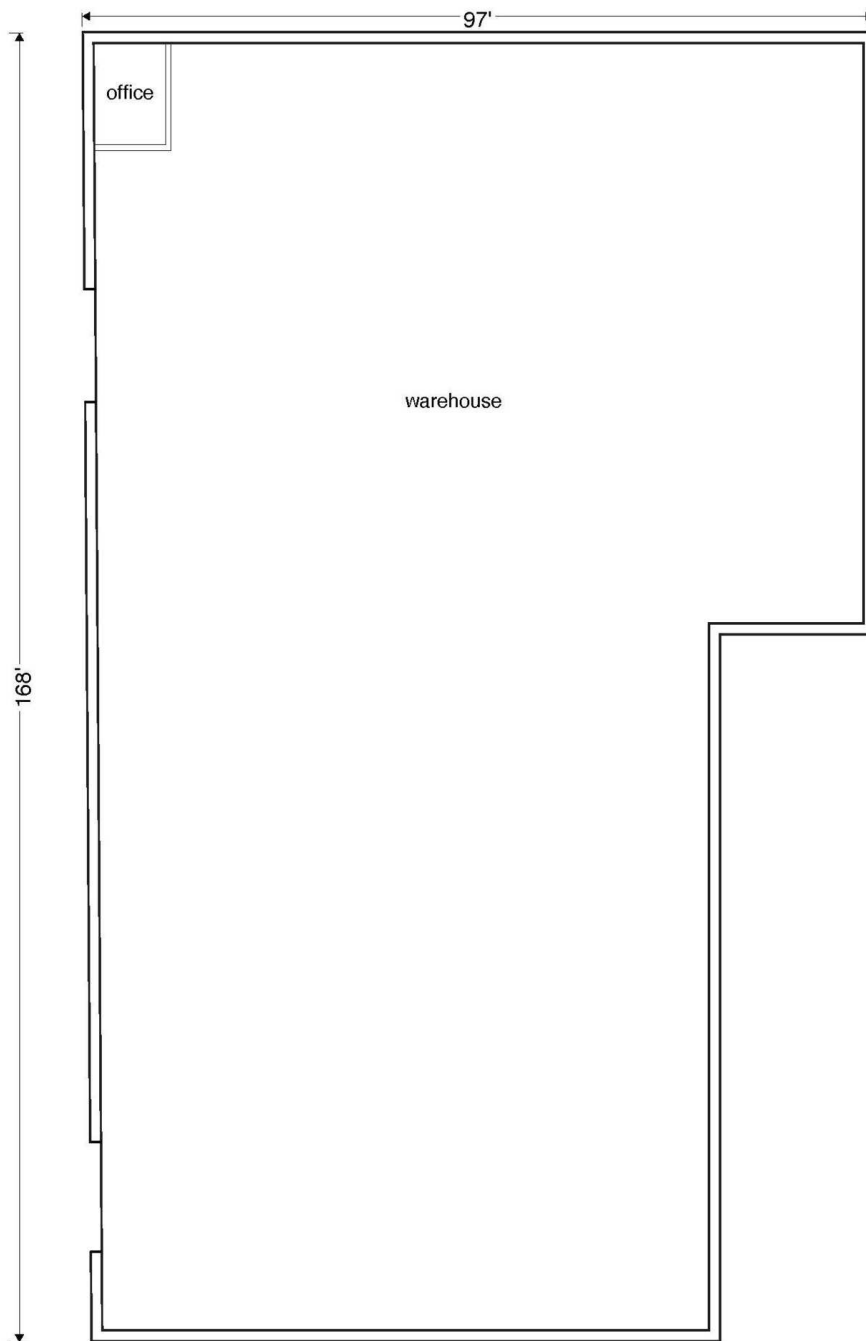
volyanich@cbcworldwide.com



**COLDWELL BANKER
COMMERCIAL**
DANFORTH

FOR SUBLEASE

CHEHALIS INDUSTRIAL
109 Sears Road, Chehalis, WA 98532



Brandon Thomas

206 303 9595

bthomas@cbcworldwide.com

Vladimir Olyanich

425 615 0577

volyanich@cbcworldwide.com



COLDWELL BANKER
COMMERCIAL
DANFORTH

LEASE

109 SEARS ROAD

109 Sears Road Napavine, WA 98532



Brandon Thomas

206 303 9595

bthomas@cbcworldwide.com

Vladimir Olyanich

425 615 0577

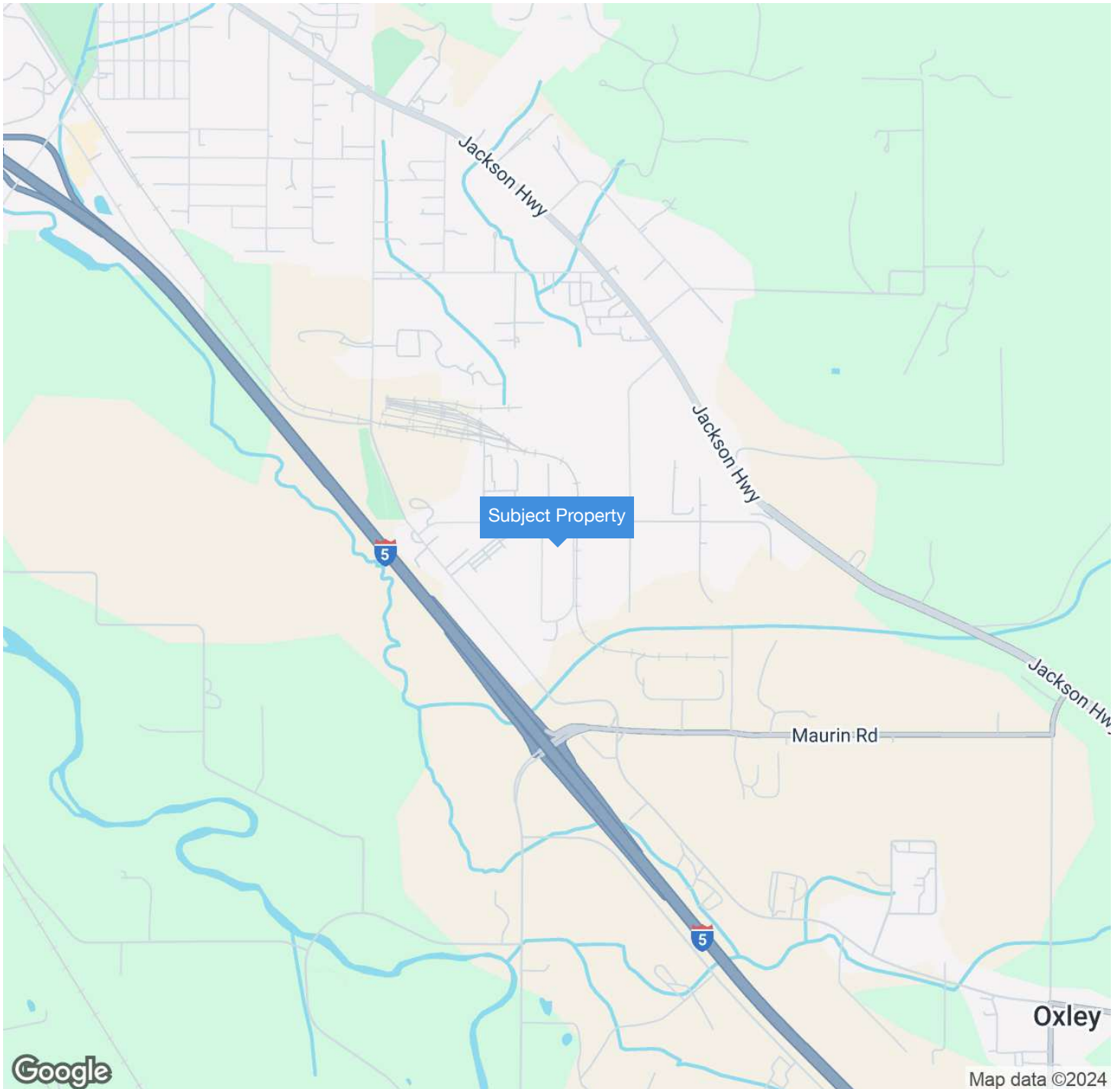
volyanich@cbcworldwide.com



**COLDWELL BANKER
COMMERCIAL**
DANFORTH

FOR SUBLEASE

CHEHALIS INDUSTRIAL
109 Sears Road, Chehalis, WA 98532



Brandon Thomas
206 303 9595
bthomas@cbcworldwide.com

Vladimir Olyanich
425 615 0577
volyanich@cbcworldwide.com



**COLDWELL BANKER
COMMERCIAL**
DANFORTH