

MATTHEWS TOWNSHIP OFFICE PARK

Office / Medical Office
Condo - Suite 301
5,069 SF

**Currently Built Out
As Medical Use**



NAI Southern Real Estate
4201 Congress Street, Suite 170
Charlotte, NC 28209
srenc.com / 704-375-1000

Contact:

Caldwell Rose
President
crose@srenc.com
D: 704-632-7622

Mike Wiles
President
mwiles@srenc.com
D: 704-632-7633

1340 Matthews Township Pkwy | Matthews, North Carolina

MATTHEWS TOWNSHIP OFFICE PARK
OFFICE / MEDICAL OFFICE CONDO

www.srenc.com

00076815

PROPERTY HIGHLIGHTS

MATTHEWS TOWNSHIP OFFICE PARK OFFICE / MEDICAL OFFICE PREMIER CONDO

This premier medical and professional center boasts a high-quality tenant mix, anchored by reputable and long-established medical providers. The concentration of healthcare users fosters a strong referral network and patient convenience, enhancing the overall value of the location for both tenants and visitors. A diverse range of specialties creates a complementary and synergistic environment for healthcare professionals.

Strategically positioned in the prestigious Matthews medical submarket, next to the Novant Health Matthews Medical Center, the property enjoys prime frontage along Highway 51 / Matthews Township Pkwy—one of the most heavily traveled and recognized corridors in the area. Tenants benefit from exceptional accessibility, proximity to affluent residential communities, and close connections to SouthPark Mall, top-tier restaurants, and high-end retail. The location also offers convenient access to Uptown Charlotte, major hospital systems, and key commuter routes, making it a sought-after destination for both practitioners and patients.

This setting offers not only a professional and polished atmosphere but also an opportunity to grow within one of Charlotte's most dynamic and well-established submarkets.

Sales Price: \$2,110,000

5,069 SF Available



+32,000 VPD on Hwy 51 in front of the site.



Next to Novant Matthews Hospital

High quality business mix of medical users.

**Currently Built Out
As Medical Use**



1340 - Suite 301



Caldwell Rose
President
crose@srenc.com
D: 704-632-7622

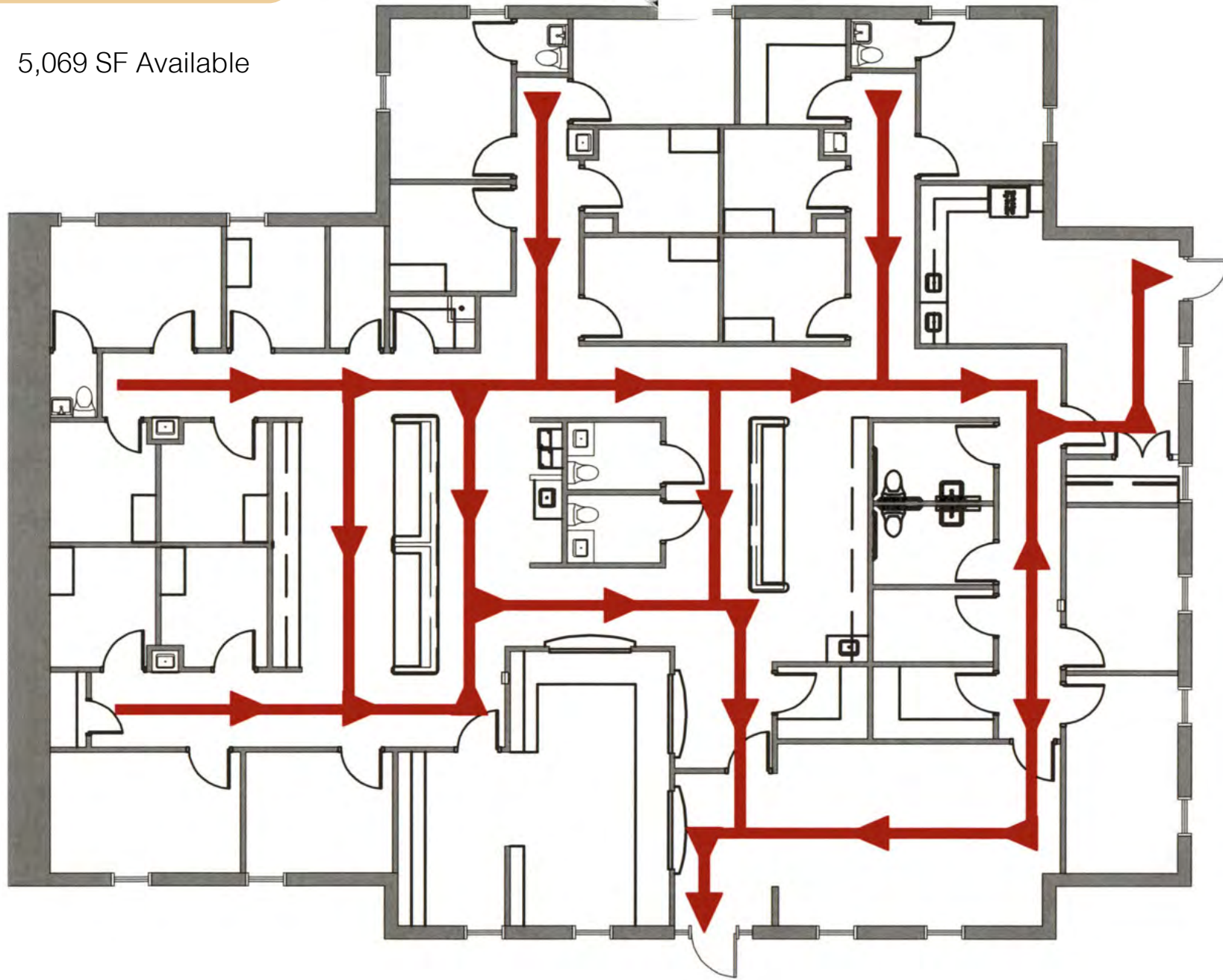
Mike Wiles
Vice President
mwiles@srenc.com
D: 704-632-7633

MATTHEWS TOWNSHIP OFFICE PARK
OFFICE / MEDICAL OFFICE CONDO

www.srenc.com

Suite 301 Floor Plan

5,069 SF Available



Interior Photos



Interior Photos

