

# FOR SALE/LEASE

## THE COURTYARD OFFICE & MEDICAL PARK



**28200-28336 FRANKLIN ROAD**  
**SOUTHFIELD, MI 48034**

### PROPERTY HIGHLIGHTS:

- Up to 6,630 SF of medical or general office space
- Immediate access to all major medical centers, convention venues, educational facilities, lodging, dining and transportation
- Excellent linkages by way of I-96/I-696/M-5/M-10, Northwestern Hwy and Telegraph Rd
- Abundant parking at a ratio of 4.52 per 1,000 SF
- Individual buildings for sale

The information provided herein along with any attachment(s) was obtained from sources believed to be reliable, however, Friedman Real Estate makes no guarantees, warranties, or representations as to the completeness or accuracy of such information and legal counsel is advised. All information provided is subject to verification and no liability for reliance on such information or errors or omissions is assumed. The presentation of this property is submitted subject to errors, omissions, change of price or conditions, prior sale or lease, or withdrawal without notice. Copyright © 2024 Friedman Real Estate. All rights reserved.

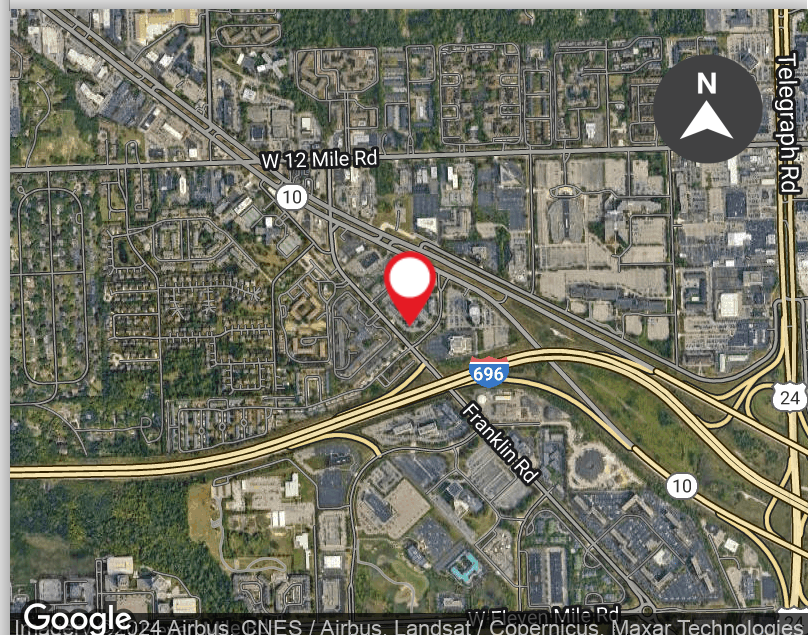
FOR MORE INFORMATION PLEASE CONTACT:



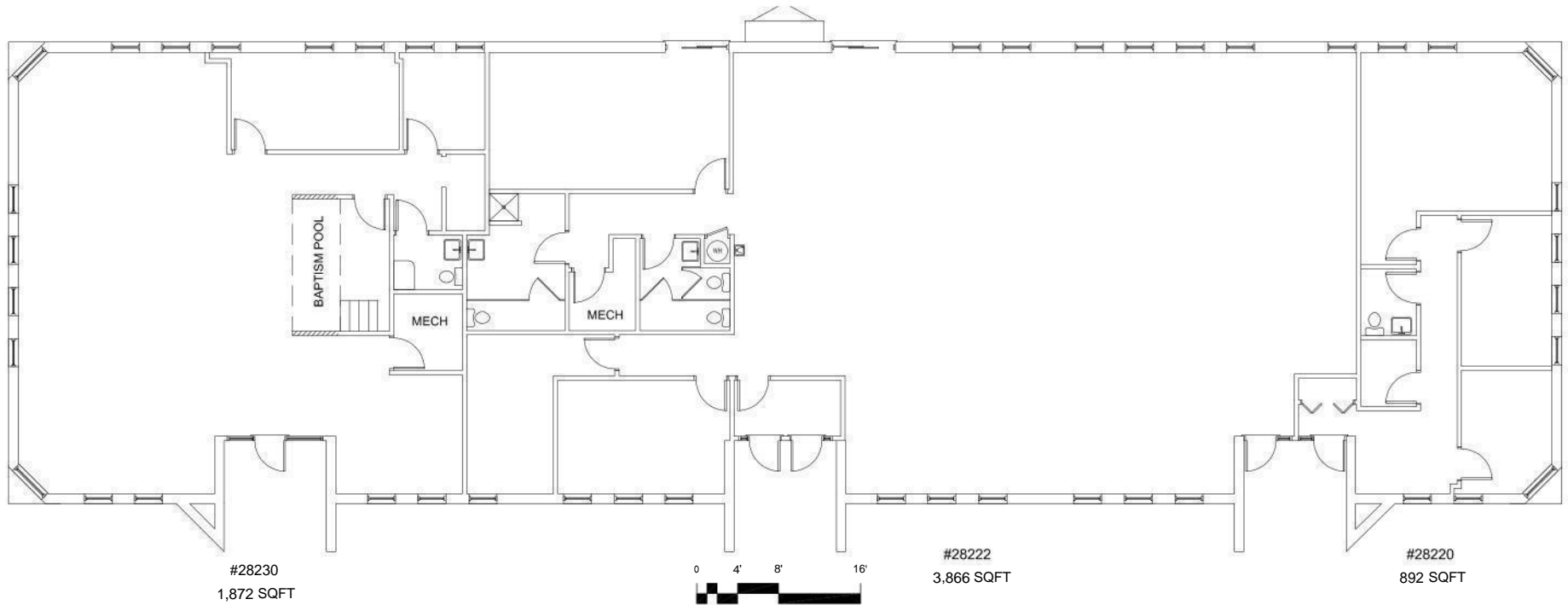
**ROBERT MOON**  
[robert.moon@freg.com](mailto:robert.moon@freg.com)

**248.324.2000**

**eCODE 509**



HAS NOT BEEN FIELD VERIFIED



File: 28220-Bldg5\_Courtyard.dwg  
Date: May 17 2024  
Time: 11:27:55

SCALE :  
1/16"=1'-0"

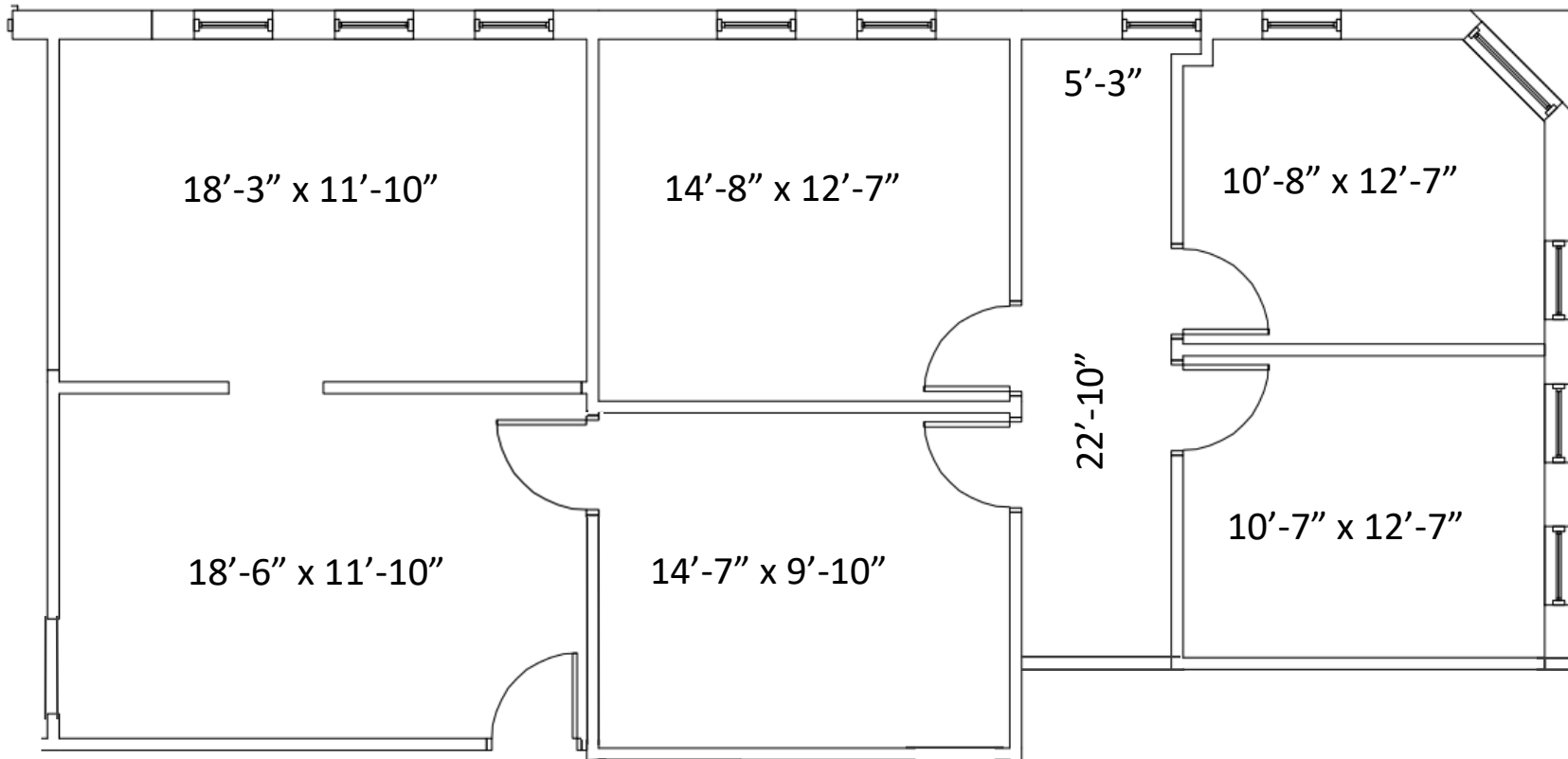
 **FRIEDMAN**  
REAL ESTATE >>>  
34975 W. Twelve Mile Road  
Farmington Hills, MI 48331  
Phone: 248.324.2030 Fax: 248.324.9238  
Web: www.friedmanrealestate.com

**COURTYARD OFFICE PARK**  
28220 FRANKLIN  
SOUTHFIELD, MI

**BLDG 5**  
6,630 SF  
FOR DETAILS PLEASE CALL  
248-324-2000

KEYPLAN





**FRIEDMAN**  
**REAL ESTATE** >>>

34975 W. Twelve Mile Road  
 Farmington Hills, MI 48331  
 Phone: 248.324.2030 Fax: 248.324.9238  
 Web: www.friedmanrealestate.com

**COURTYARD OFFICE PARK**  
**28300-E FRANKLIN**  
**SOUTHFIELD, MI**

**1,527 RSF**

FOR DETAILS PLEASE CALL  
 248-324-2000



**NORTH**