

# FOR LEASE 2,709 SF

OFFICE/WAREHOUSE UNITS



## 2103 W. PARKSIDE LANE PHOENIX | AZ

FOR MORE INFORMATION, CONTACT:

**CHRIS ROGERS**

Executive Vice President

O: 602.575.2309 | M: 602.513.0555

crogers@daumcre.com

**TREVOR MCKENDRY**

Executive Vice President

O: 602.575.2332 | M: 602.686.2236

tmckendry@daumcre.com



20%  
Office Space



Near 101 & I-17  
Freeways



Deer Valley  
Location

Although all information is furnished regarding for sale, rental or financing is from sources deemed reliable, such information has not been verified and no express representation is made nor is any to be implied as to the accuracy thereof, and it is submitted subject to errors, omissions, changes of price, rental or other conditions, prior sale, lease or financing, or withdrawal without notice. D/AQ Corp. # 01129558

  
COMMERCIAL REAL ESTATE SERVICES



# 2103 W. PARKSIDE LANE PHOENIX | AZ

## PROPERTY HIGHLIGHTS

- 2,709 SF Available - Unit 111
- Evap Cooled Warehouses
- 1600 Amps Electrical Service
- A-1 Zoning
- 10 'X 12' Roll Up Bay Doors
- 16' Clear Height
- Lease Rate: \$1.90/SF/MO Gross
- Near 101 Fwy & I-17 in The Deer Valley Airpark
- Travertine Flooring
- Custom Granite Cabinetry
- Spacious Warehouse & Office Layout
- Endcap
- New Exterior Paint, Asphalt, and Landscaping 2021



### FOR MORE INFORMATION, CONTACT:

#### **CHRIS ROGERS**

Executive Vice President

O: 602.575.2309 | M: 602.513.0555

crogers@daumcre.com

#### **TREVOR MCKENDRY**

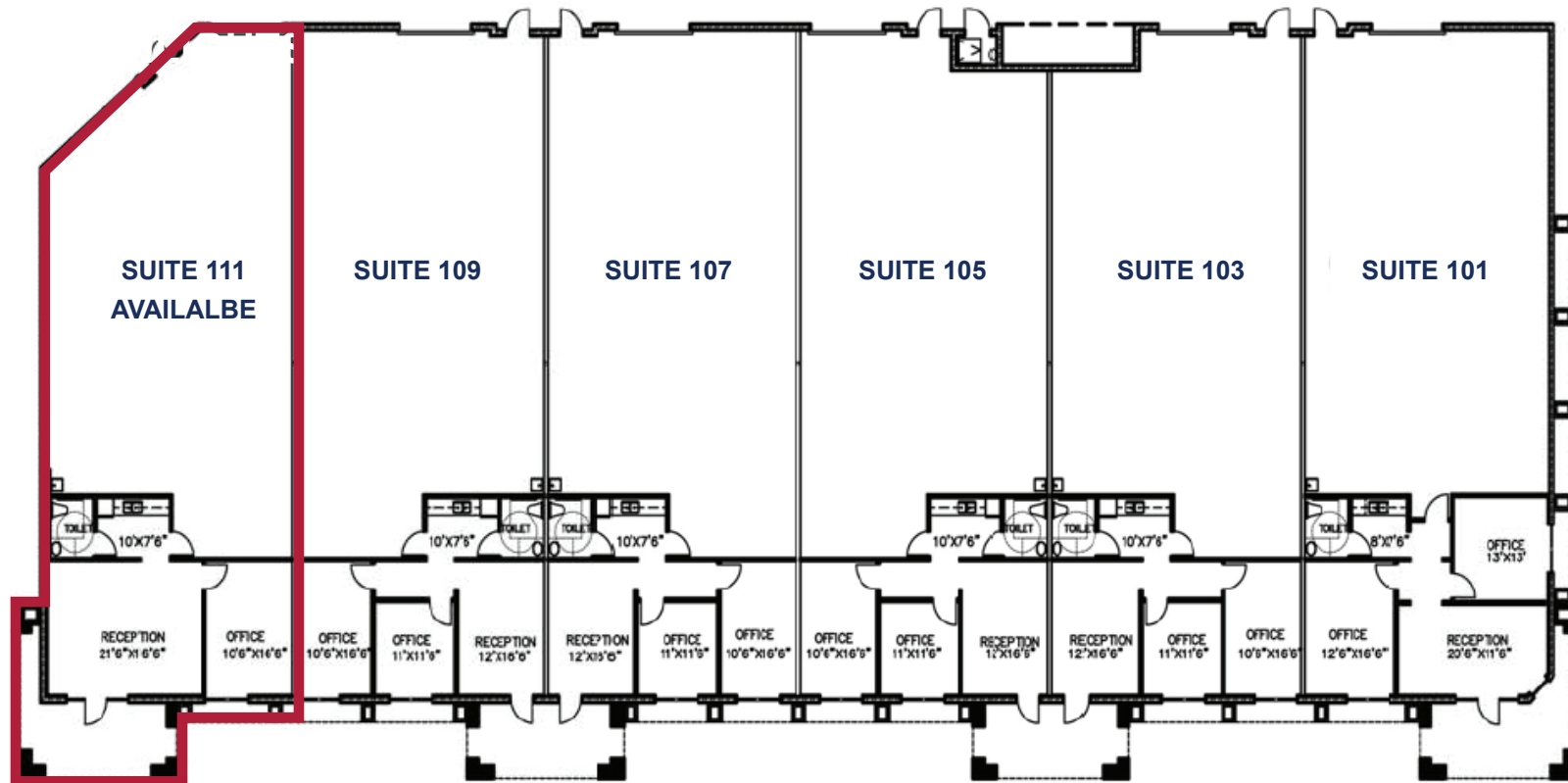
Executive Vice President

O: 602.575.2332 | M: 602.686.2236

tmckendry@daumcre.com

**DAUM**  
COMMERCIAL REAL ESTATE SERVICES

Although all information is furnished regarding for sale, rental or financing is from sources deemed reliable, such information has not been verified and no express representation is made nor is any to be implied as to the accuracy thereof, and it is submitted subject to errors, omissions, changes of price, rental or other conditions, prior sale, lease or financing, or withdrawal without notice. D/AQ Corp. # 01129558



**FOR MORE INFORMATION, CONTACT:**

**CHRIS ROGERS**

Executive Vice President

O: 602.575.2309 | M: 602.513.0555

crogers@daumcre.com

**TREVOR MCKENDRY**

Executive Vice President

O: 602.575.2332 | M: 602.686.2236

tmckendry@daumcre.com





**2103 W. PARKSIDE  
LANE PHOENIX | AZ**

**FOR LEASE 2,709 SF**  
OFFICE/WAREHOUSE UNITS



**FOR MORE INFORMATION, CONTACT:**

**CHRIS ROGERS**

Executive Vice President

O: 602.575.2309 | M: 602.513.0555

crogers@daumcre.com

**TREVOR MCKENDRY**

Executive Vice President

O: 602.575.2332 | M: 602.686.2236

tmckendry@daumcre.com

**DAUM**  
COMMERCIAL REAL ESTATE SERVICES

Although all information is furnished regarding for sale, rental or financing is from sources deemed reliable, such information has not been verified and no express representation is made nor is any to be implied as to the accuracy thereof, and it is submitted subject to errors, omissions, changes of price, rental or other conditions, prior sale, lease or financing, or withdrawal without notice. D/AQ Corp. # 01129558



**2103 W. PARKSIDE  
LANE PHOENIX | AZ**

**FOR LEASE 2,709 SF**  
OFFICE/WAREHOUSE UNITS



**FOR MORE INFORMATION, CONTACT:**

**CHRIS ROGERS**

Executive Vice President

O: 602.575.2309 | M: 602.513.0555

crogers@daumcre.com

**TREVOR MCKENDRY**

Executive Vice President

O: 602.575.2332 | M: 602.686.2236

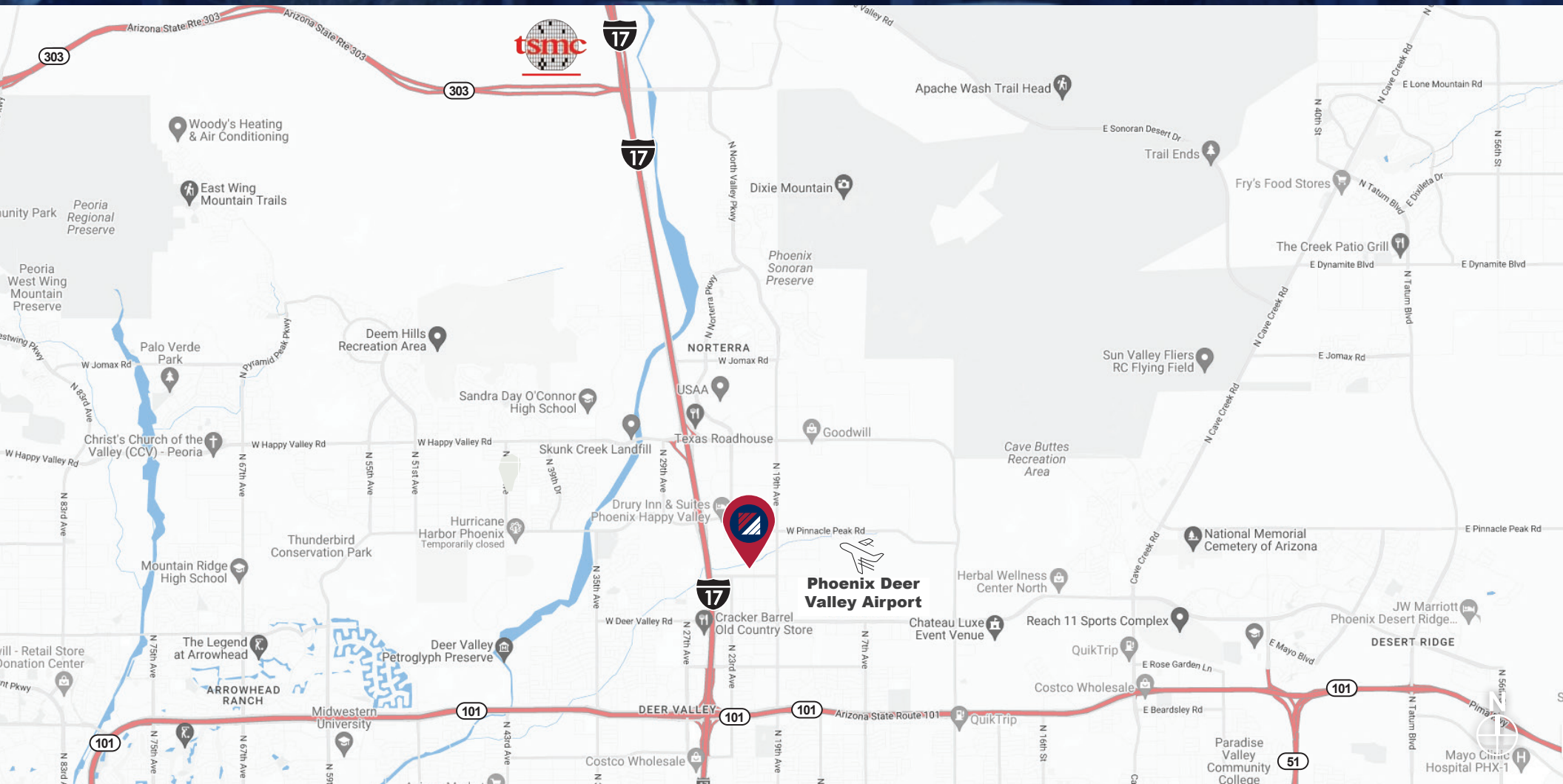
tmckendry@daumcre.com

**DAUM**  
COMMERCIAL REAL ESTATE SERVICES

Although all information is furnished regarding for sale, rental or financing is from sources deemed reliable, such information has not been verified and no express representation is made nor is any to be implied as to the accuracy thereof, and it is submitted subject to errors, omissions, changes of price, rental or other conditions, prior sale, lease or financing, or withdrawal without notice. D/AQ Corp. # 01129558

# 2103 W. PARKSIDE LANE PHOENIX | AZ

## FOR LEASE 2,709 SF OFFICE/WAREHOUSE UNITS



### FOR MORE INFORMATION, CONTACT:

#### CHRIS ROGERS

Executive Vice President

O: 602.575.2309 | M: 602.513.0555

crogers@daumcre.com

#### TREVOR MCKENDRY

Executive Vice President

O: 602.575.2332 | M: 602.686.2236

tmckendry@daumcre.com



Although all information is furnished regarding for sale, rental or financing is from sources deemed reliable, such information has not been verified and no express representation is made nor is any to be implied as to the accuracy thereof, and it is submitted subject to errors, omissions, changes of price, rental or other conditions, prior sale, lease or financing, or withdrawal without notice. D/AQ Corp. # 01129558



**2103 W. PARKSIDE  
LANE PHOENIX | AZ**

**TOP COMPANIES  
NO. EMPLOYEES**

1. TSMC  
20,000 Employees
2. THE ARIZONA REPUBLIC  
1,011 Employees
3. COX  
2,158 Employees
4. HONEYWELL  
6,111 Employees
5. DISCOVER  
3,003 Employees
6. BEST WESTERN  
966 Employees
7. AMERICAN EXPRESS  
7,603 Employees
8. PETS MART  
2,034 Employees

FOR MORE INFORMATION,  
PLEASE CONTACT:

**CHRIS ROGERS**  
EXECUTIVE VICE PRESIDENT  
O: 602.575.2309 | M: 602.513.0555  
CROGERS@DAUMCRE.COM

**TREVOR MCKENDRY**  
EXECUTIVE VICE PRESIDENT  
O: 602.575.2332 | M: 602.686.2236  
TMCKENDRY@DAUMCRE.COM

**DAUM**  
COMMERCIAL REAL ESTATE SERVICES

