

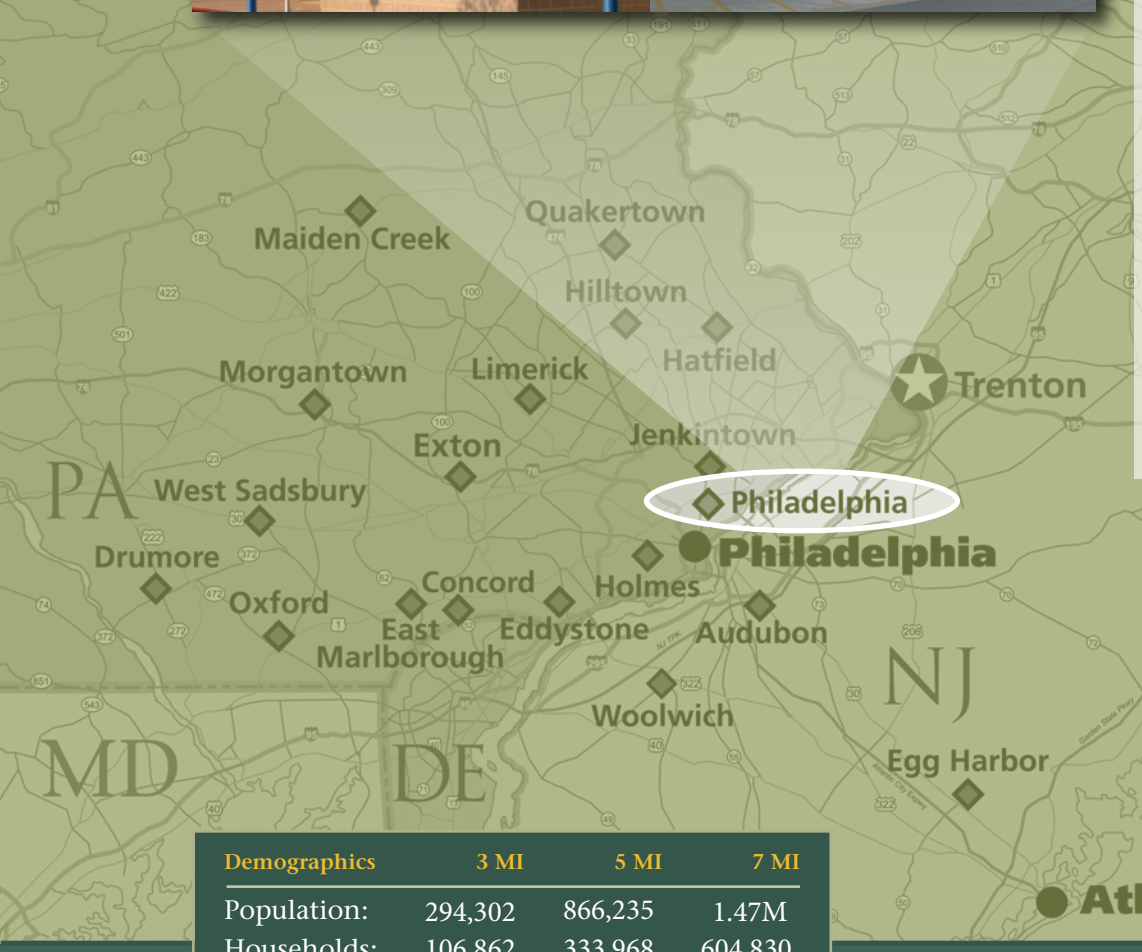
PHILADELPHIA COUNTY • PA

ARAMINGO CROSSINGS

ARAMINGO AVE & E. BUTLER St. ♦ PHILADELPHIA, PA 19137



- ♦ Strategically located at the intersection of Aramingo and E. Butler St., Philadelphia County, PA
- ♦ Join Walmart and Lowe's
- ♦ High visibility on Aramingo Ave with 44,000 VPD



Demographics	3 MI	5 MI	7 MI
Population:	294,302	866,235	1.47M
Households:	106,862	333,968	604,830
Avg HH Inc:	\$71,258	\$85,560	\$96,648

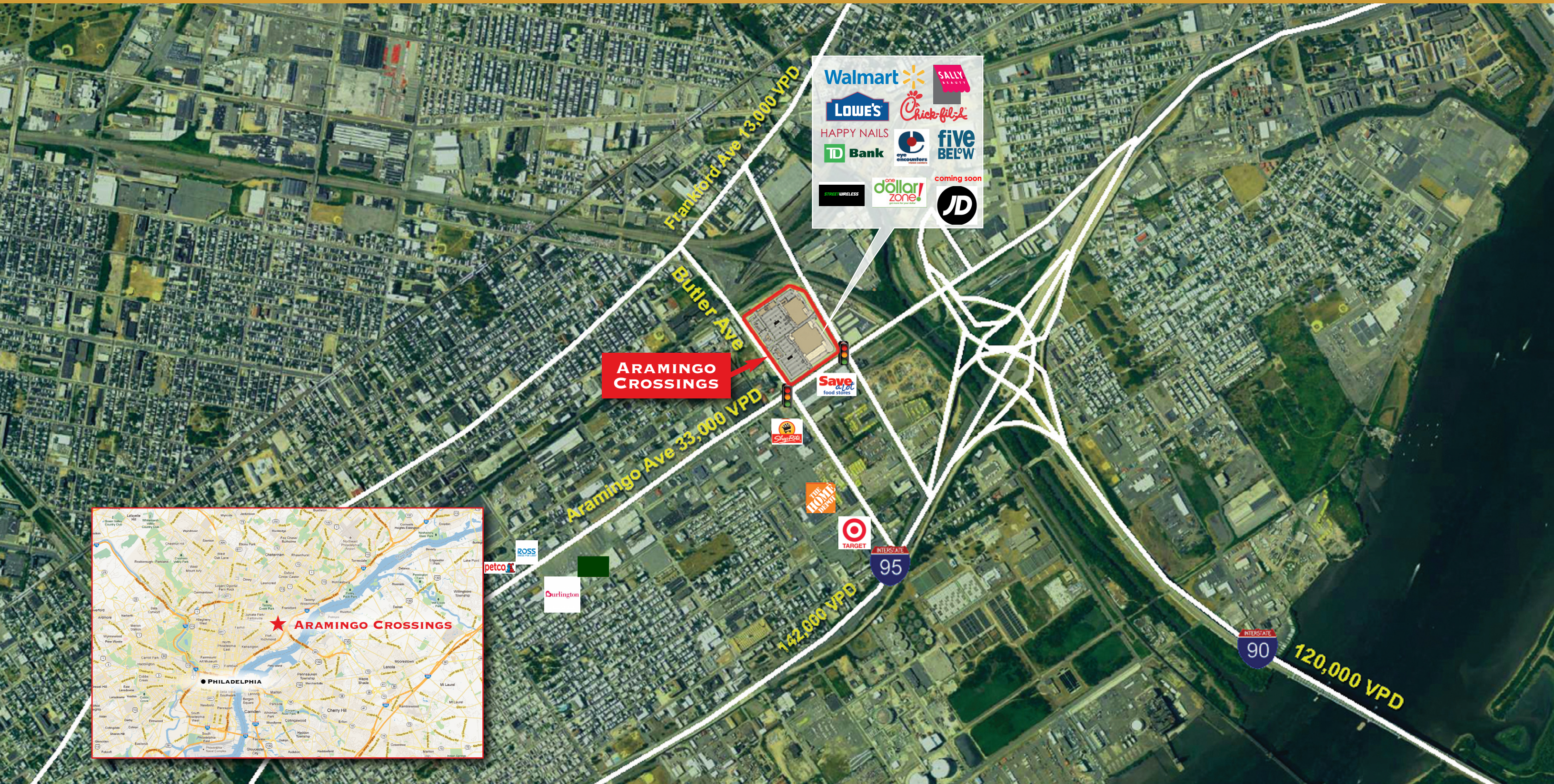
W WOLFSON GROUP
INCORPORATED

For More Information Contact:

610.277.8899

ARAMINGO CROSSINGS

ARAMINGO AVE & E. BUTLER St. ♦ PHILADELPHIA, PA 19137
PHILADELPHIA COUNTY

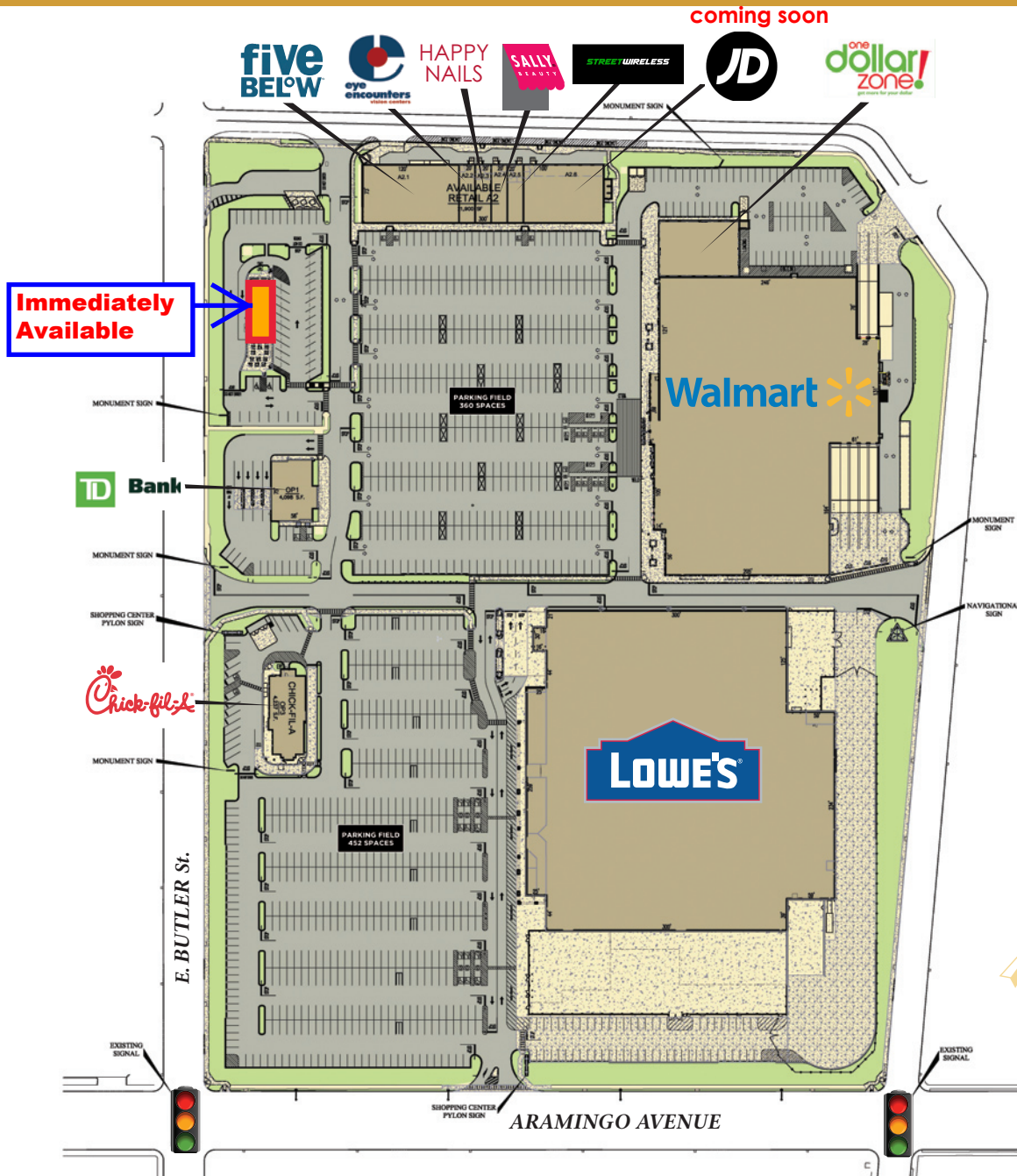


ARAMINGO CROSSINGS

PHILADELPHIA, PA
GLA 290,769 S.F.

WOLFSON GROUP
INCORPORATED

Please contact Wolfson Group, Inc. at
610-277-8899



Unit	Tenant	Dimensions	Sq. Ft.
B	Lowe's		157,098
C	Walmart		92,185
D	One Dollar Zone!	70x100	7,000
E-1	JD Sports Coming Soon	100x73	7,300
E-2	Street Wireless	20x73	1,460
E-3	Sally Beauty	20x73	1,460
E-4	Happy Nails	20x73	1,460
E-5	Eye Encounters	20x73	1,460
E-6	Five Below	120x73	8,760
OP-1	TD Bank		2,939
OP-2	Available Outparcel		
OP-3	Chick-Fil-A		4,237