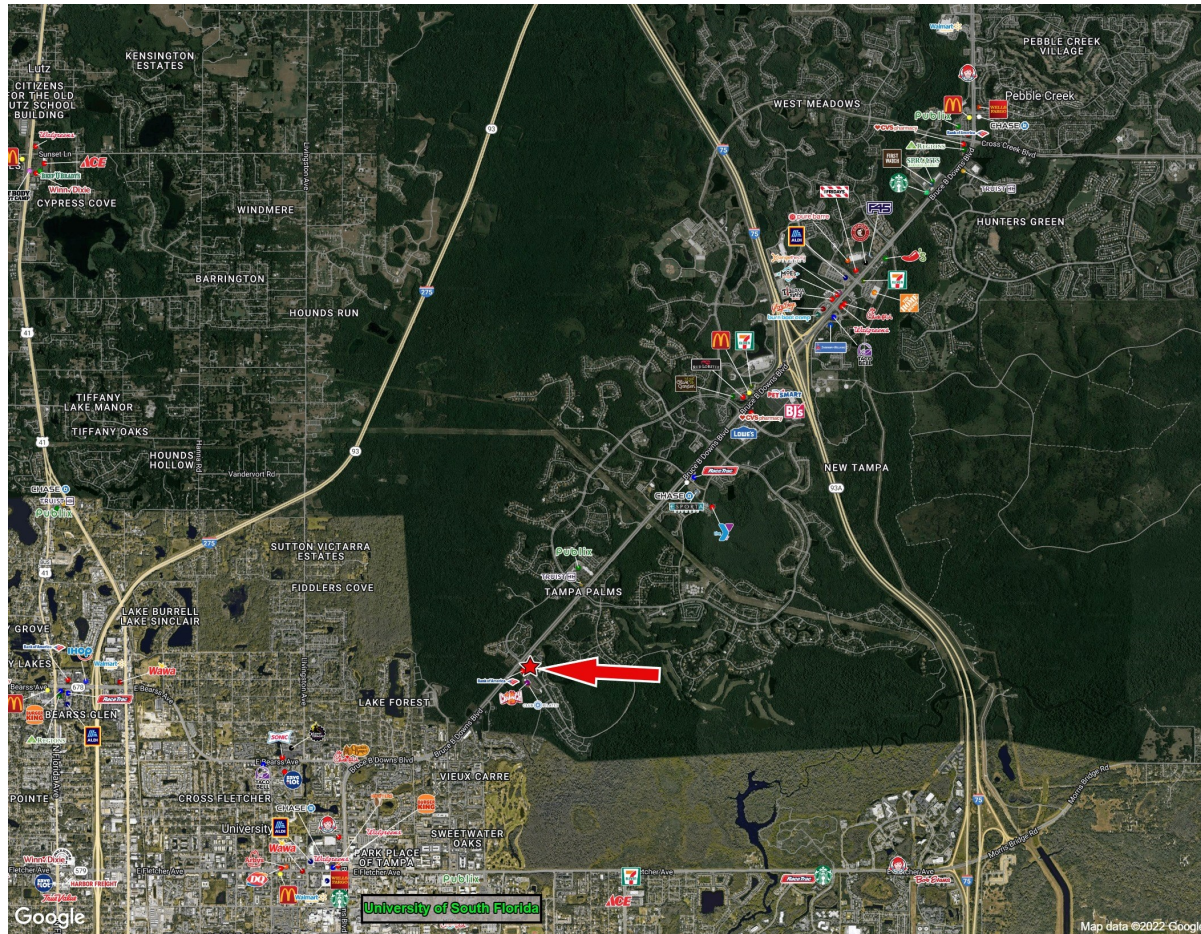




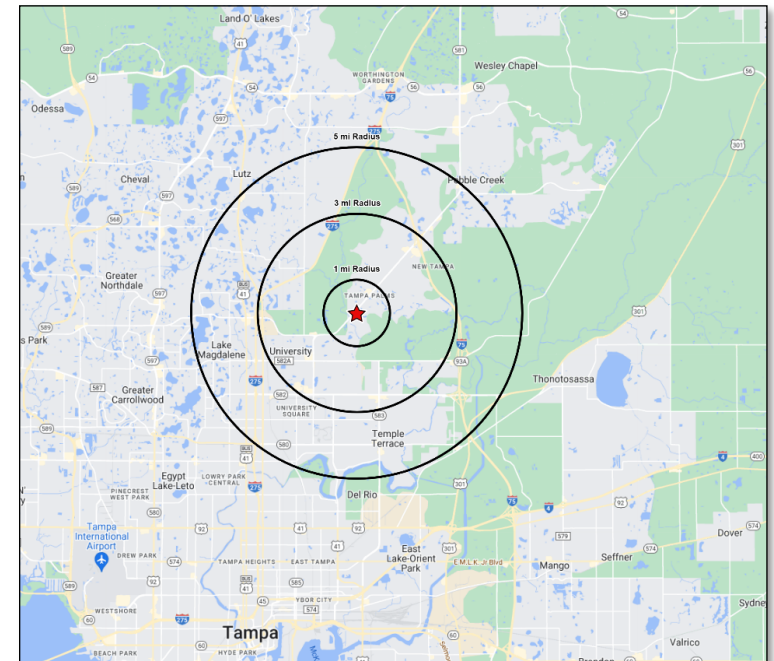
Tampa Palms Former Bank Available For Lease

15302 Amberly Dr
Tampa, Florida 33647

For More Information Contact:
Alex Bisbee
Office: (407) 864-6444
Email: abisbee@insiterei.com



**Former Freestanding Bank
Land: 1.29 Acres / Building: 3,762**



Property & Market Highlights:

- **2nd Generation Bank Branch with (5) Drive Thru Lanes**
- Located at the signalized intersection of Bruce B Downs Blvd & Amberly Dr
- Outparcel to 85,000 SF Office Bldg. (over 90% Occupied)
- Convenient access to I-275 & I-75

Traffic Counts - Bruce B Downs Blvd - 50,000 AADT

	1 Mile	3 Mile	5 Mile
Population	11,462	87,752	201,876
Average HH Income	\$75,011	\$61,225	\$67,442
Daytime Population	3,213	33,710	77,026

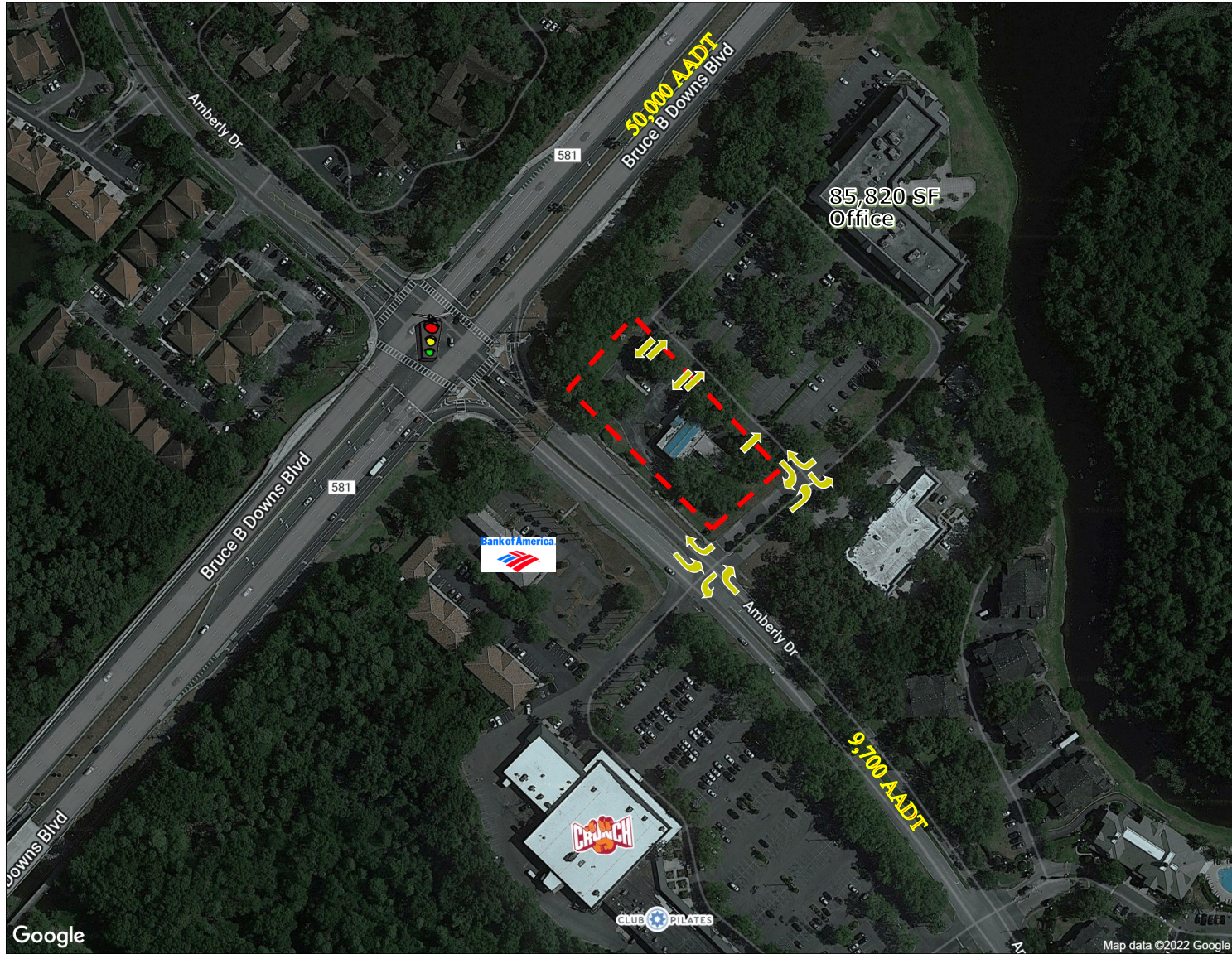
No warranty of any kind is made by Owner, Insite Real Estate, Inc., or its affiliates as to the accuracy or completeness of the information contained herein.
All information is subject to change without notice.



Tampa Palms Former Bank Available For Lease

15302 Amberly Dr
Tampa, Florida 33647

For More Information Contact:
Alex Bisbee
Office: (407) 864-6444
Email: abisbee@insiterei.com



No warranty of any kind is made by Owner, Insite Real Estate, Inc., or its affiliates as to the accuracy or completeness of the information contained herein.
All information is subject to change without notice.