

112 RIVINGTON

BETWEEN ESSEX & LUDLOW STREETS | LOWER EAST SIDE

RESTOCKED

BUY
SELL
TRADE

Supreme.

RESTOCKED

112 RIVINGTON

BETWEEN ESSEX & LUDLOW STREETS | LOWER EAST SIDE

SIZE: 2,000 SF Ground Floor
1,388 SF Basement

FRONTAGE: 17'

CEILING HEIGHT: 15'

POSSESSION: Immediate

TRANSPORTATION: J Z F M

HIGHLIGHTS:

- Currently Restocked
- High foot traffic area
- Excellent commercial/retail tenancy
- Prime Lower East Side location
- Highly visible, glass frontage
- Neighboring Tenants include:

Tigre Cocktail Bar, Economy Candy, Supermoon Bakehouse, The Magician, La Caverna, Rice to Riches, Kind Regards, Reformation, Frankie Shop, Wildair, Froth New York, Russ and Daughters Cafe, Good Thanks Cafe, Shake Shack, & many more!



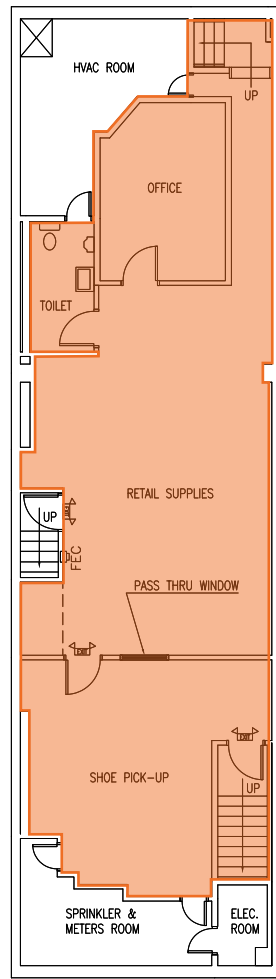
All information supplied in this marketing presentation and/or flyer is from sources deemed reliable and is furnished subject to errors, omissions, modifications, removal of listings from sale/lease and to any listing condition. Any square footage, dimensions, floor plans and/or technical data set forth are approximations and are subject to further elaboration/confirmation.



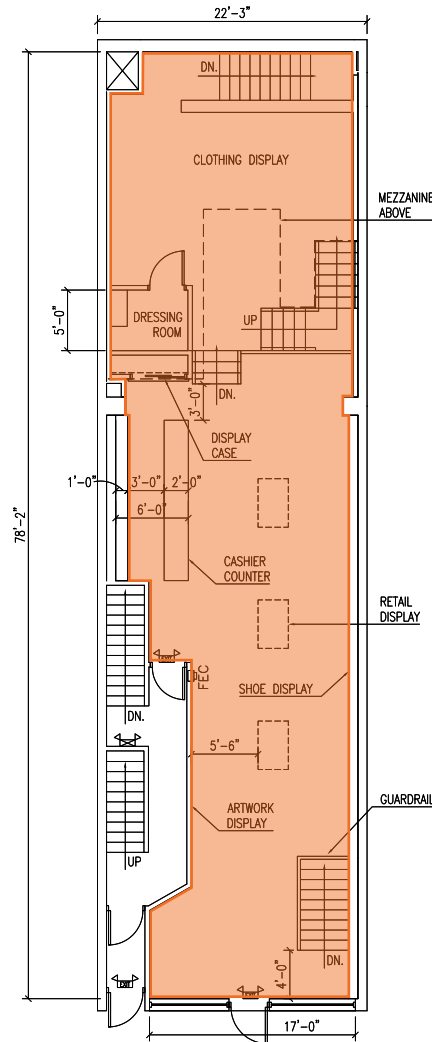
112 RIVINGTON

BETWEEN ESSEX & LUDLOW STREETS | LOWER EAST SIDE

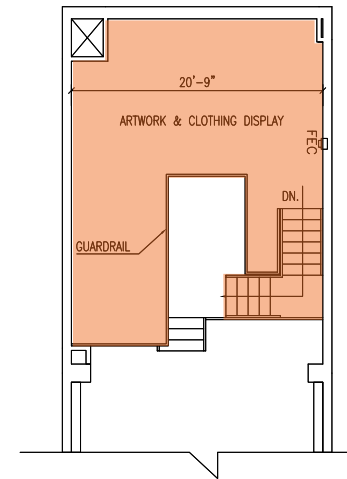
FLOOR PLANS:



BASEMENT
1,388 SF



GROUND FLOOR
2,000 SF



MEZZANINE

112 RIVINGTON

BETWEEN ESSEX & LUDLOW STREETS | LOWER EAST SIDE

FOR MORE INFORMATION,
PLEASE CONTACT:

ISAAC COOPER

786.510.2349 | ICooper@ksrny.com

FREDDY SOUID

917.968.0329 | FSouid@ksrny.com

JACK HAMADANI

718.415.0095 | JHamadani@ksrny.com

