

OFFICE / RETAIL SPACE FOR LEASE



112 UNION STREET - UNIT 1A

Providence, RI 02903

DAN FEINER

Vice President
401.751.3200 x3310
dan@mgcommercial.com

MG COMMERCIAL

365 Eddy Street, Penthouse Suite
Providence, RI 02903
401.751.3200 | mgcommercial.com

PROPERTY SUMMARY



PROPERTY DESCRIPTION

This 1,163 SF of bright modern office/retail space in Downtown Providence located in the historic "Telephone Building". The space has open office area with open ceiling and exposed duct work. It is very welcoming for staff and clients/customers and includes a beautiful kitchen and conference room. It has large windows allowing for natural light to flow throughout and is perfect for many types of office/retail uses.

PROPERTY HIGHLIGHTS

- Ideal location
- Modern office / retail space
- The suite has large windows and high-end lighting fixtures
- Located in the historic Telephone Building
- The property is walking distance to many area businesses within the Arts and Entertainment District
- 1 block from The Convention Center, The Graduate Hotel and City Hall

DAN FEINER
 Vice President
 401.751.3200 x3310
 dan@mgcommercial.com

LOCATION DESCRIPTION

The historic "Telephone Building" is located at 112 Union Street in Downtown Providence in the Arts and Entertainment District. It is one block from City Hall, The Graduate Hotel, The University of RI and The Providence Convention Center.

OFFERING SUMMARY

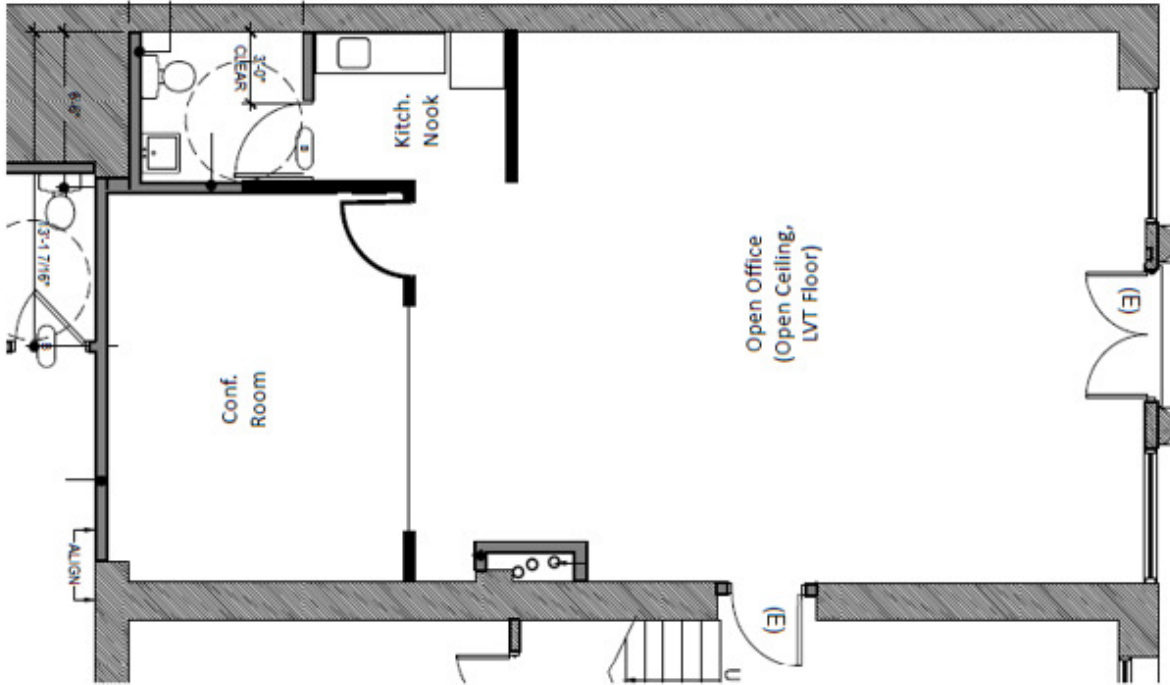
Lease Rate:	\$2,700 per month (NNN)
Available SF:	1,163 SF
Building Size:	29,500 SF

DEMOGRAPHICS	0.3 MILES	0.5 MILES	1 MILE
Total Households	1,176	3,626	12,946
Total Population	2,501	8,112	33,851
Average HH Income	\$177,520	\$148,772	\$125,708

 365 Eddy Street, Penthouse Suite
 Providence, RI 02903
 mgcommercial.com



ADDITIONAL PHOTOS



DAN FEINER
Vice President
401.751.3200 x3310
dan@mgcommercial.com

365 Eddy Street, Penthouse Suite
Providence, RI 02903
mgcommercial.com



RETAILER MAP



DAN FEINER
 Vice President
 401.751.3200 x3310
 dan@mgcommercial.com

365 Eddy Street, Penthouse Suite
 Providence, RI 02903
 mgcommercial.com

