



NEXUS

AT GREEN VALLEY CORPORATE CENTER





NEXUS

AT GREEN VALLEY CORPORATE CENTER

901

N. GREEN VALLEY
PARKWAY

SUITE 130

±2,621 RSF

FOR MORE INFORMATION, PLEASE CONTACT:

CHARLES VAN GEEL

Senior Director

+1 702 688 6966

charles.vangeel@cushwake.com

LIC #BS.044616 / PM.162448

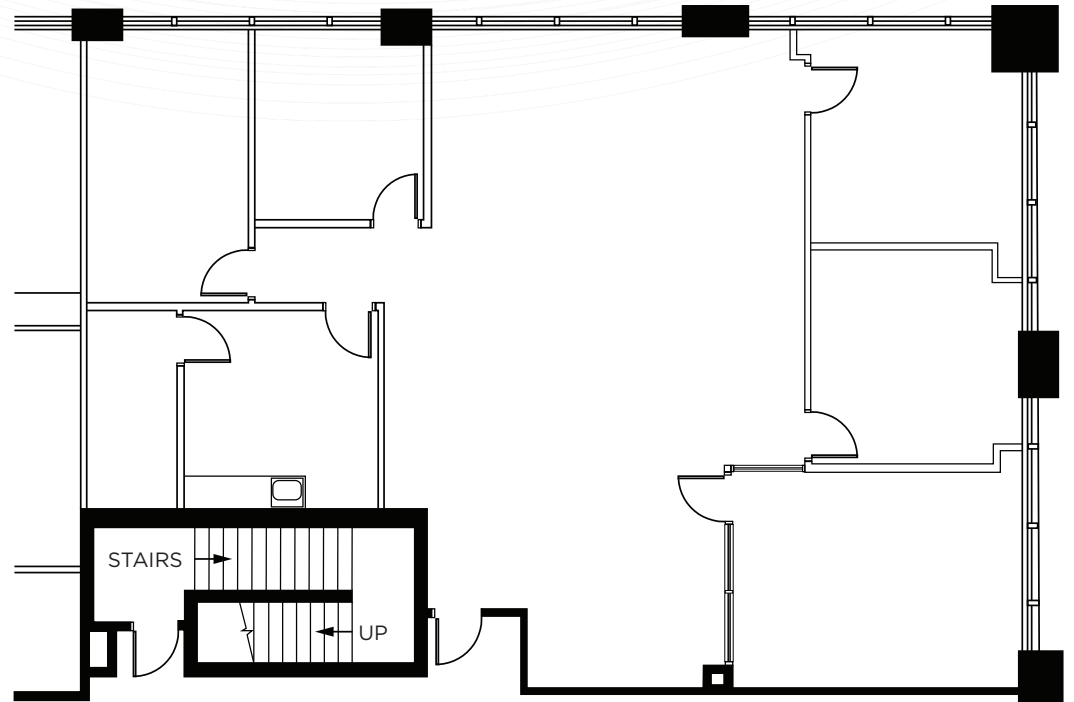
MATTHEW BEBAN

Associate

+1 702 449 2431

matthew.beban@cushwake.com

LIC #S.0202638



AVAILABLE 3/1/2025



NEXUS

AT GREEN VALLEY CORPORATE CENTER

901

N. GREEN VALLEY PARKWAY

SUITE 260

±6,522 RSF

FOR MORE INFORMATION, PLEASE CONTACT:

CHARLES VAN GEEL

Senior Director

+1 702 688 6966

charles.vangeel@cushwake.com

LIC #BS.044616 / PM.162448

MATTHEW BEBAN

Associate

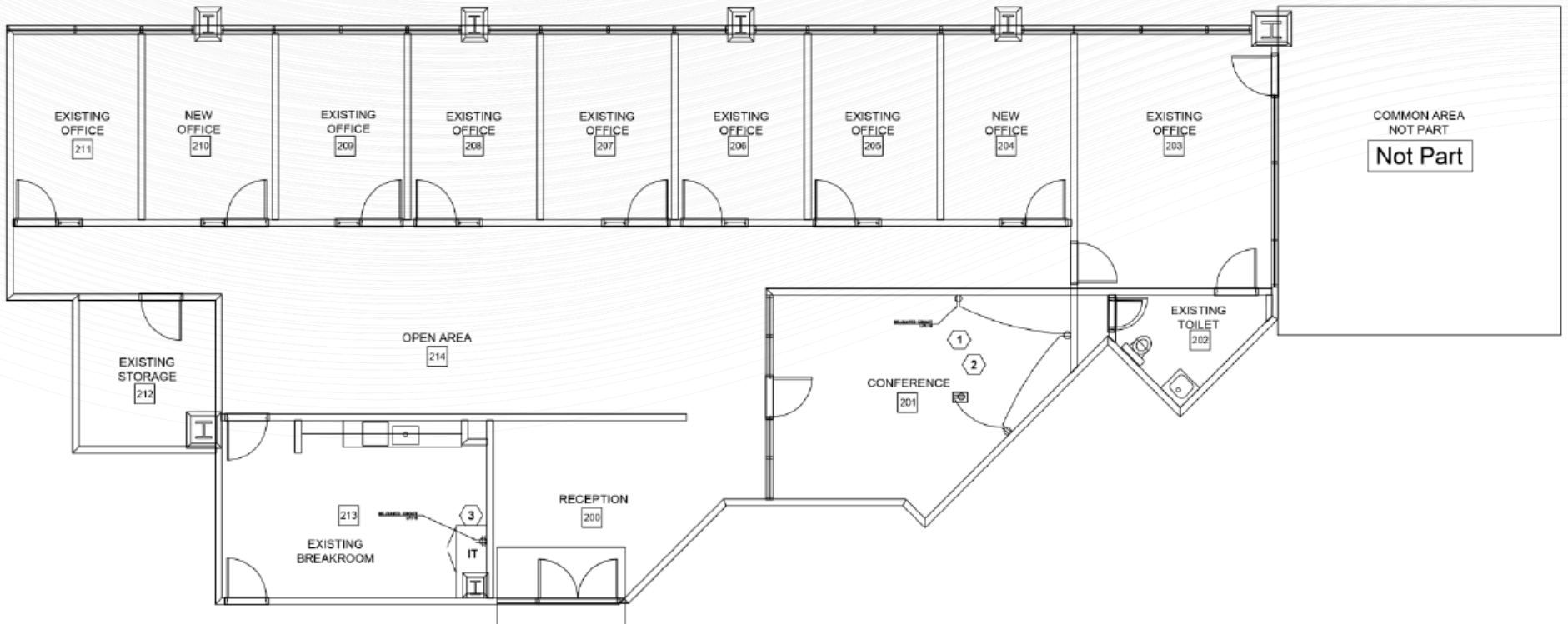
+1 702 449 2431

matthew.beban@cushwake.com

LIC #S.0202638



Brentwood EST. 1984



AVAILABLE 3/1/2025



NEXUS

AT GREEN VALLEY CORPORATE CENTER

901
N. GREEN VALLEY
PARKWAY

SUITE 270
±4,514 RSF

FOR MORE INFORMATION, PLEASE CONTACT:

CHARLES VAN GEEL

Senior Director

+1 702 688 6966

charles.vangeel@cushwake.com

LIC #BS.044616 / PM.162448

MATTHEW BEBAN

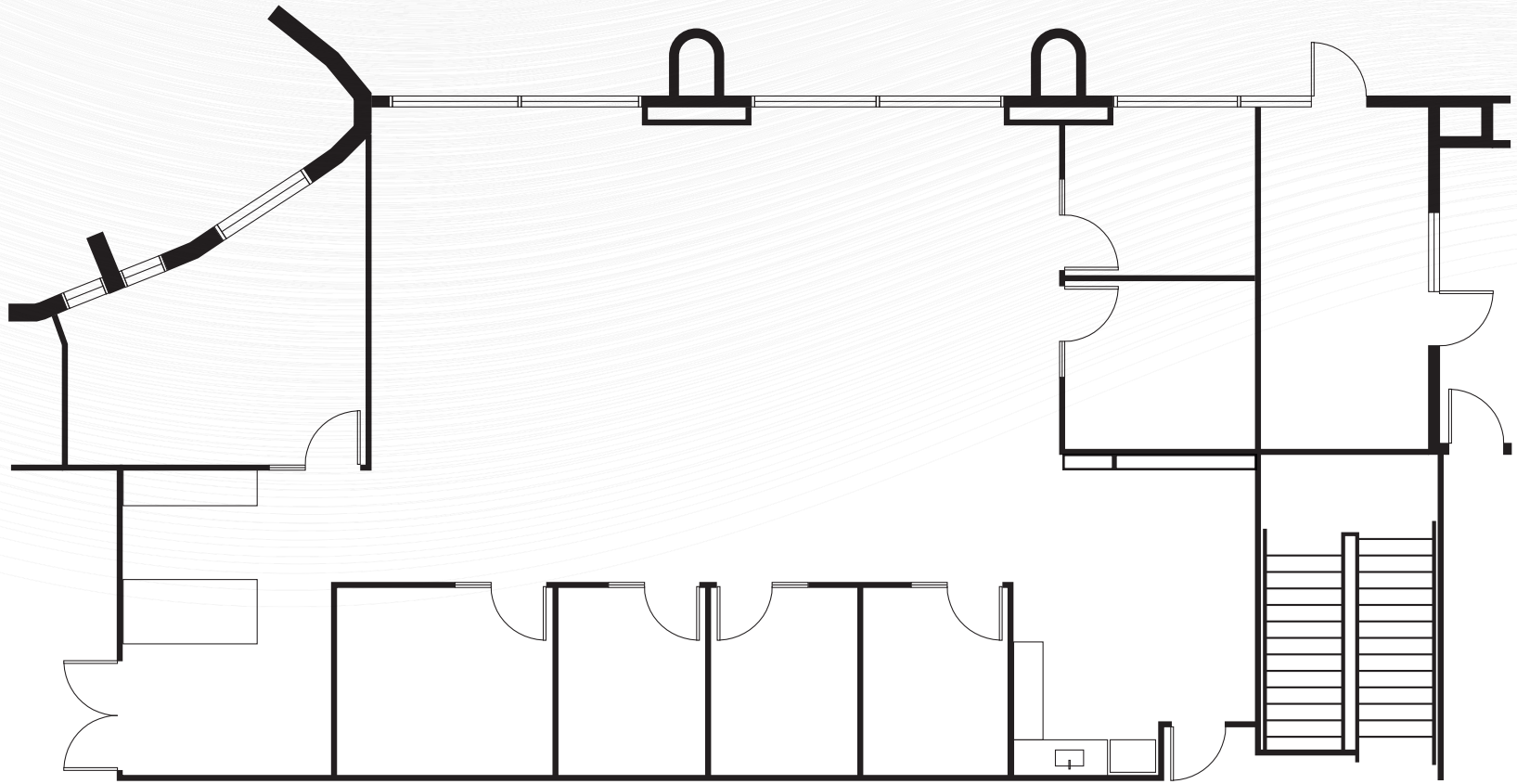
Associate

+1 702 449 2431

matthew.beban@cushwake.com

LIC #S.0202638





NEXUS

AT GREEN VALLEY CORPORATE CENTER

1301
N. GREEN VALLEY
PARKWAY

SUITE 100
±2,862 RSF

FOR MORE INFORMATION, PLEASE CONTACT:

CHARLES VAN GEEL

Senior Director

+1 702 688 6966

charles.vangeel@cushwake.com

LIC #BS.044616 / PM.162448

MATTHEW BEBAN

Associate

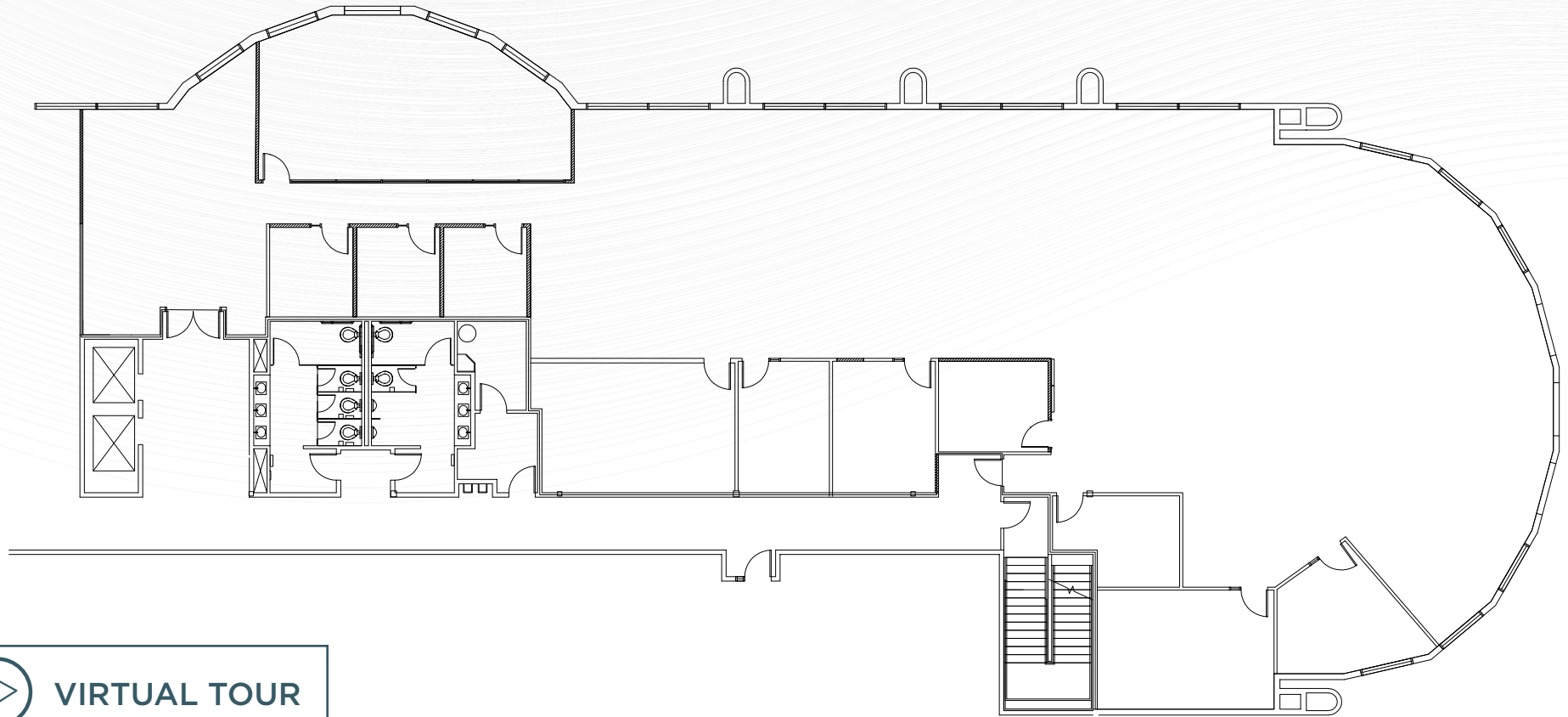
+1 702 449 2431

matthew.beban@cushwake.com

LIC #S.0202638



Brentwood EST. 1984



VIRTUAL TOUR



NEXUS

AT GREEN VALLEY CORPORATE CENTER

1401
N. GREEN VALLEY
PARKWAY

SUITE 250
±8,549 RSF

FOR MORE INFORMATION, PLEASE CONTACT:

CHARLES VAN GEEL

Senior Director

+1 702 688 6966

charles.vangeel@cushwake.com

LIC #BS.044616 / PM.162448

MATTHEW BEBAN

Associate

+1 702 449 2431

matthew.beban@cushwake.com

LIC #S.0202638



Brentwood EST. 1984



NEXUS

AT GREEN VALLEY CORPORATE CENTER

2250 CORPORATE CIRCLE

SUITE 310 ±5,391 RSF

FOR MORE INFORMATION, PLEASE CONTACT:

CHARLES VAN GEEL

Senior Director

+1 702 688 6966

charles.vangeel@cushwake.com

LIC #BS.044616 / PM.162448

MATTHEW BEBAN

Associate

+1 702 449 2431

matthew.beban@cushwake.com

LIC #S.0202638





NEXUS

AT GREEN VALLEY CORPORATE CENTER

2250

CORPORATE
CIRCLE

SUITE 320

±6,152 RSF

FOR MORE INFORMATION, PLEASE CONTACT:

CHARLES VAN GEEL

Senior Director

+1 702 688 6966

charles.vangeel@cushwake.com

LIC #BS.044616 / PM.162448

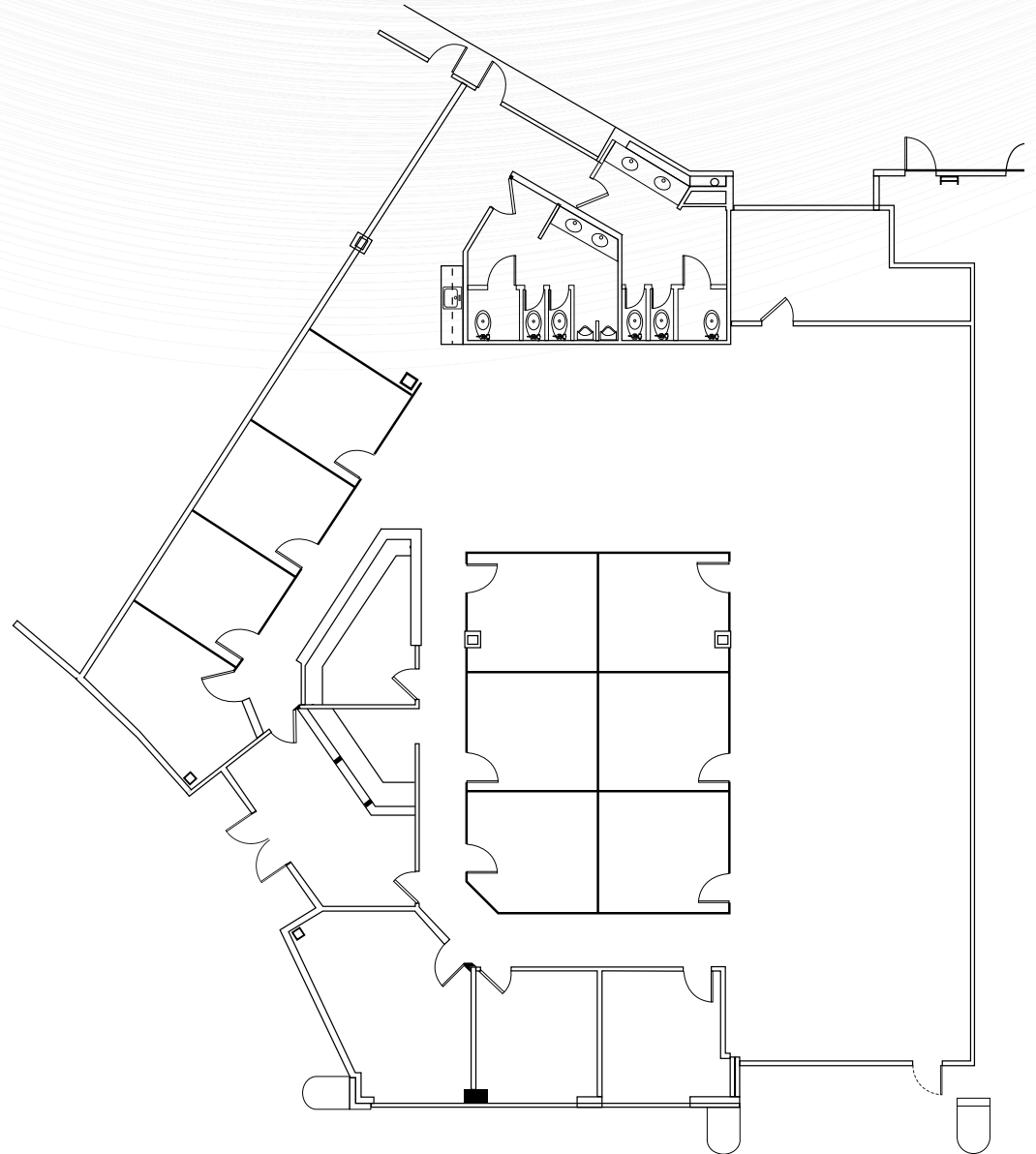
MATTHEW BEBAN

Associate

+1 702 449 2431

matthew.beban@cushwake.com

LIC #S.0202638





NEXUS

AT GREEN VALLEY CORPORATE CENTER

2250 CORPORATE CIRCLE

SUITE 350 ±4,008 RSF

FOR MORE INFORMATION, PLEASE CONTACT:

CHARLES VAN GEEL

Senior Director

+1 702 688 6966

charles.vangeel@cushwake.com

LIC #BS.044616 / PM.162448

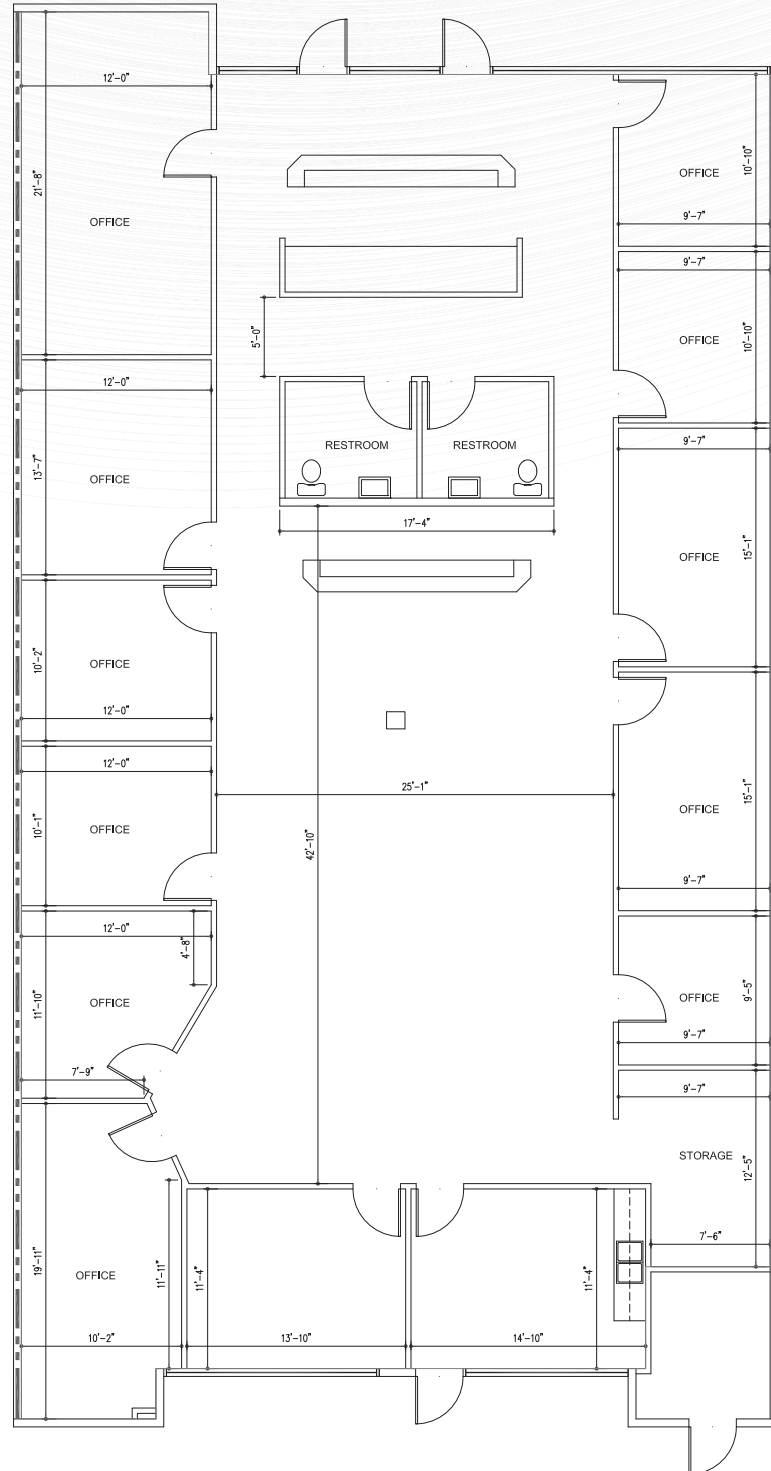
MATTHEW BEBAN

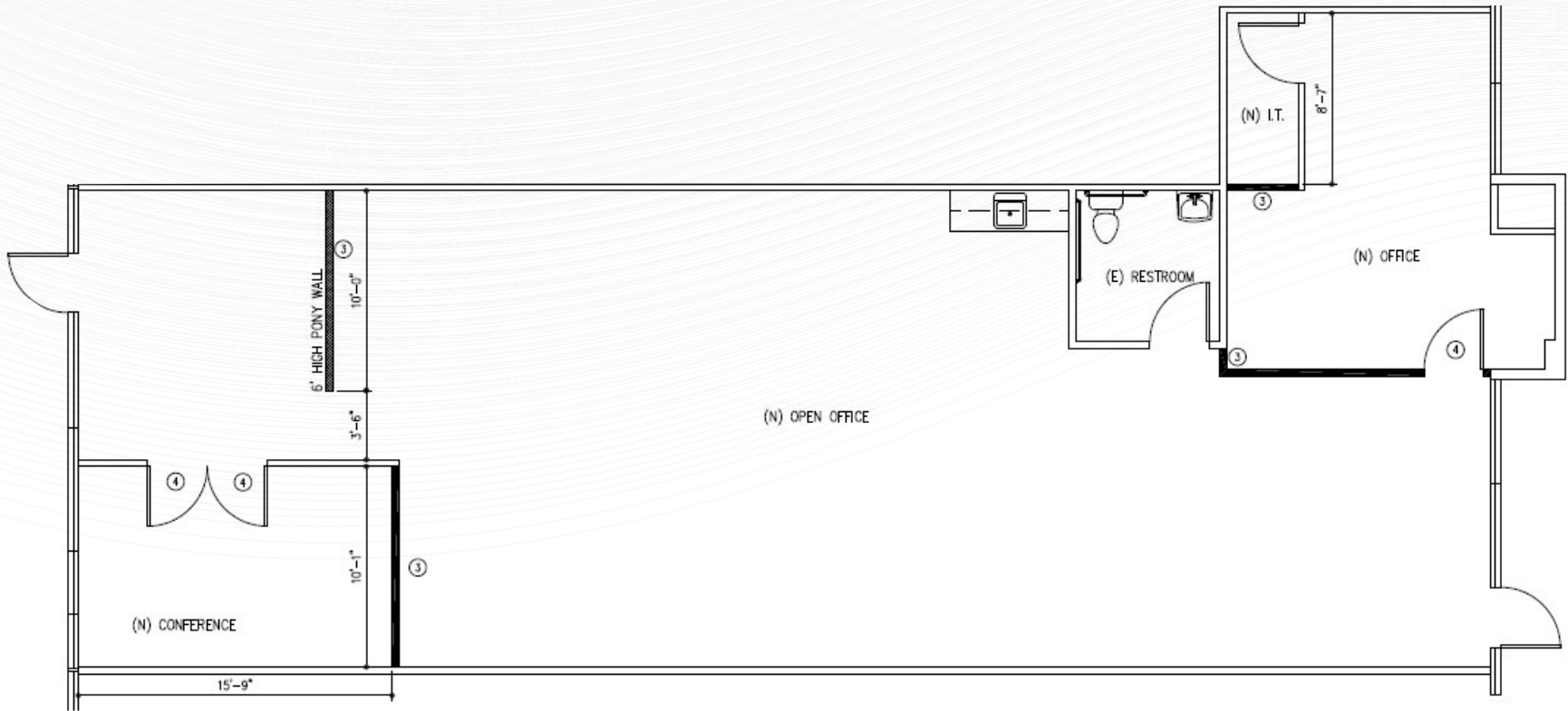
Associate

+1 702 449 2431

matthew.beban@cushwake.com

LIC #S.0202638





AVAILABLE 1/1/2025



NEXUS

AT GREEN VALLEY CORPORATE CENTER

2260

CORPORATE
CIRCLE

SUITE 450
±1,913 RSF

FOR MORE INFORMATION, PLEASE CONTACT:

CHARLES VAN GEEL

Senior Director

+1 702 688 6966

charles.vangeel@cushwake.com

LIC #BS.044616 / PM.162448

MATTHEW BEBAN

Associate

+1 702 449 2431

matthew.beban@cushwake.com

LIC #S.0202638

