

the
CROSSING
at enterprise park



BA BRADFORD
ALLEN

4345 SOUTHPOINT BLVD, JACKSONVILLE

the
CROSSING
at enterprise park

on-site
amenities



fitness center



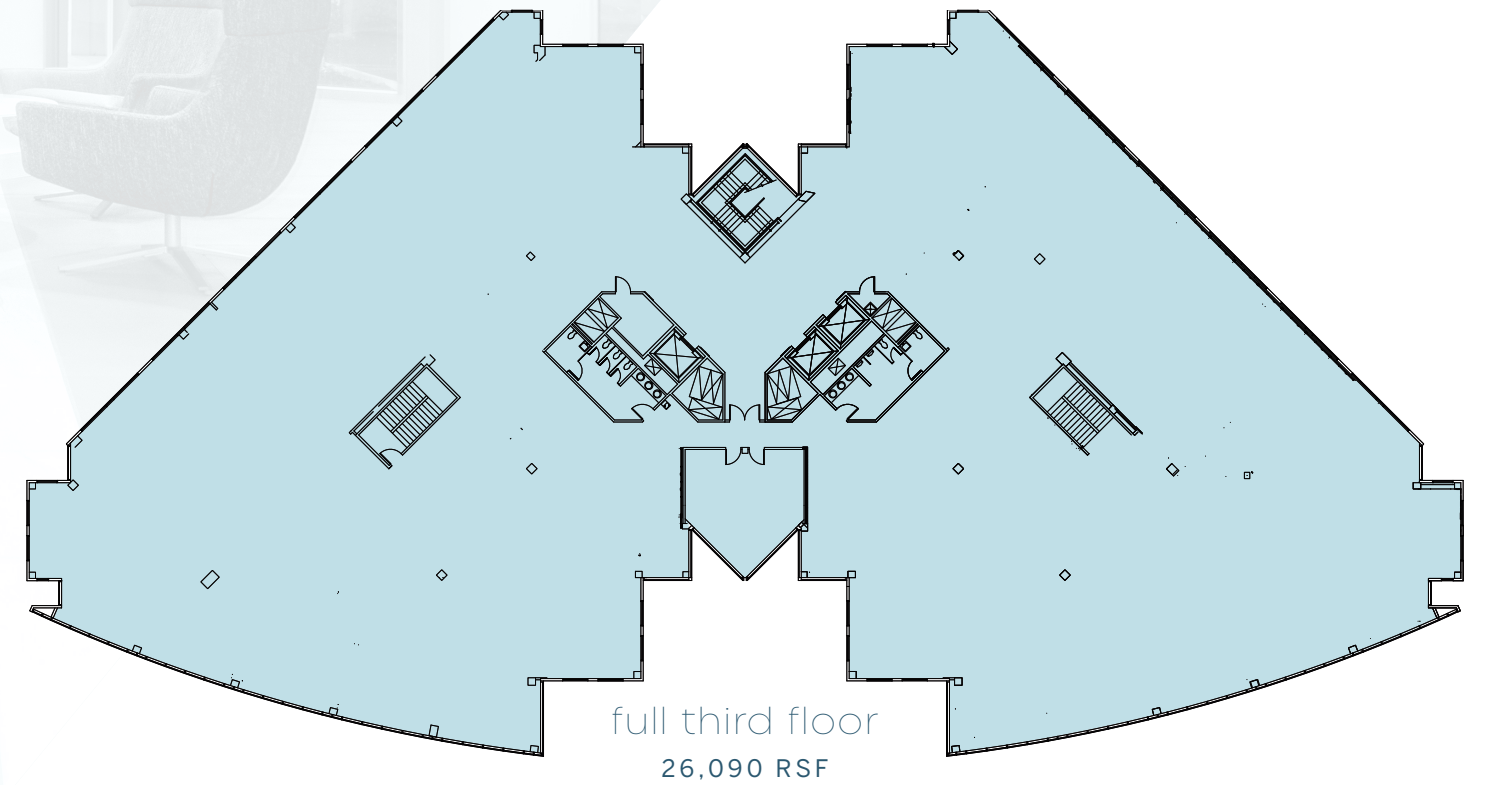
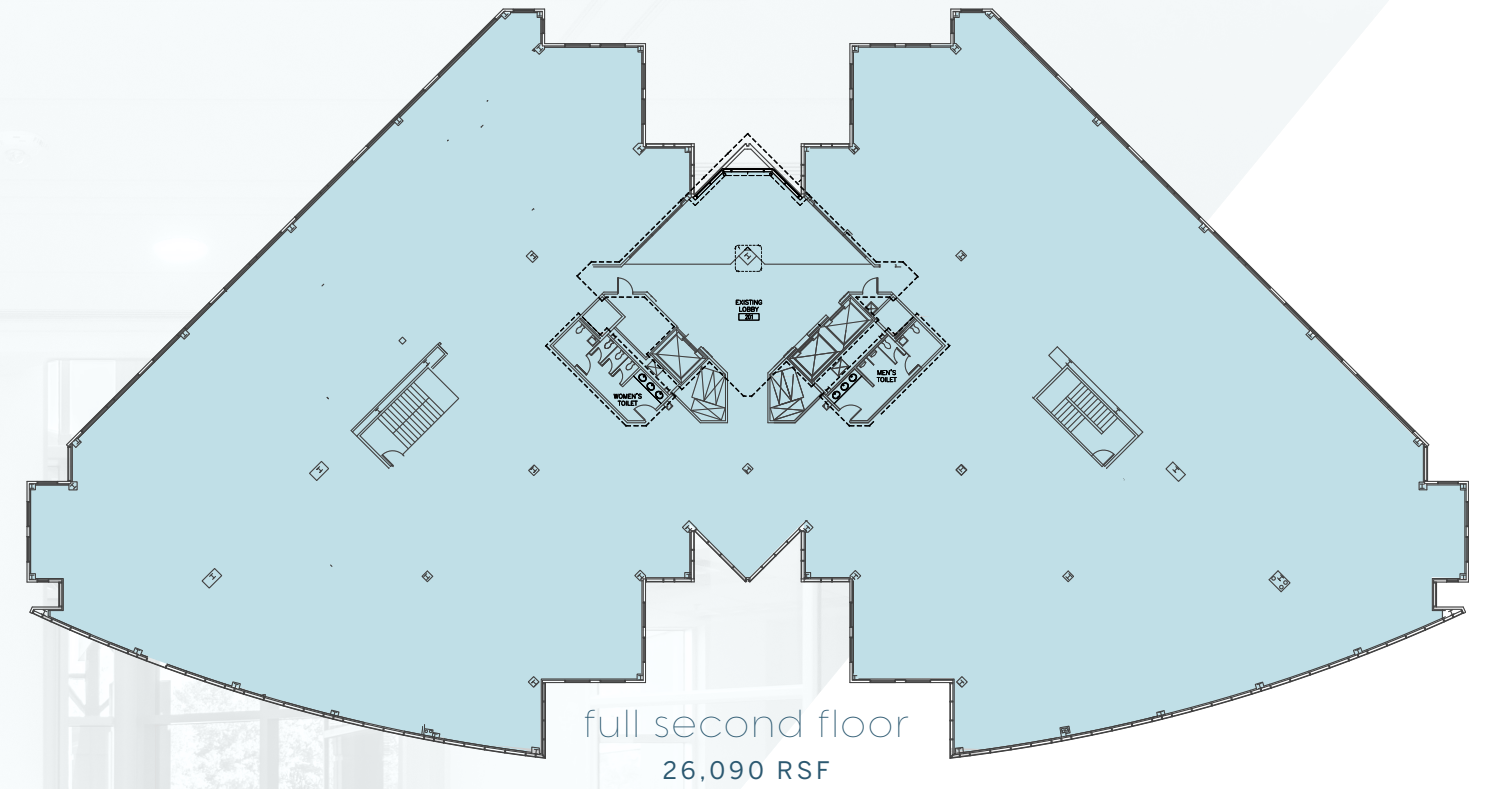
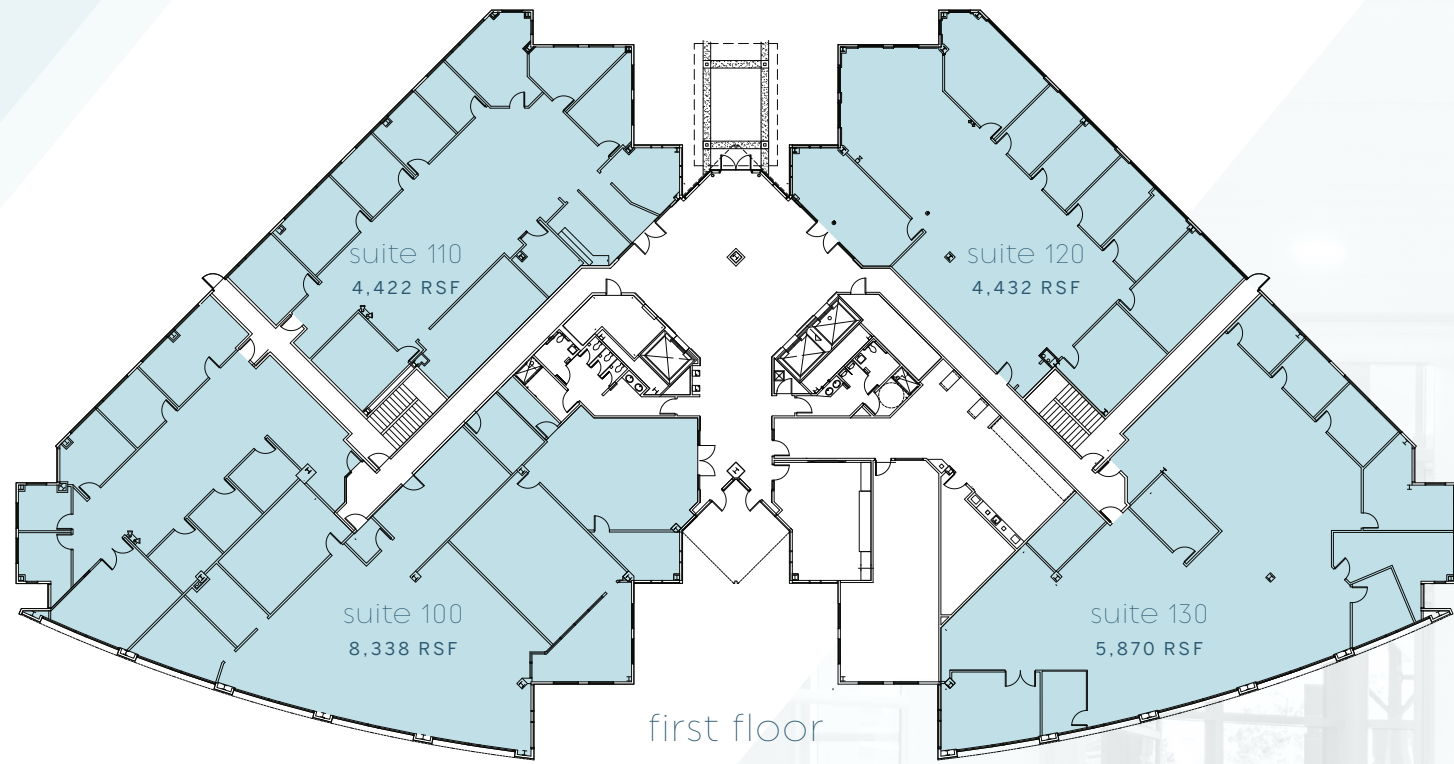
conferencing facility



lake views & outdoor seating

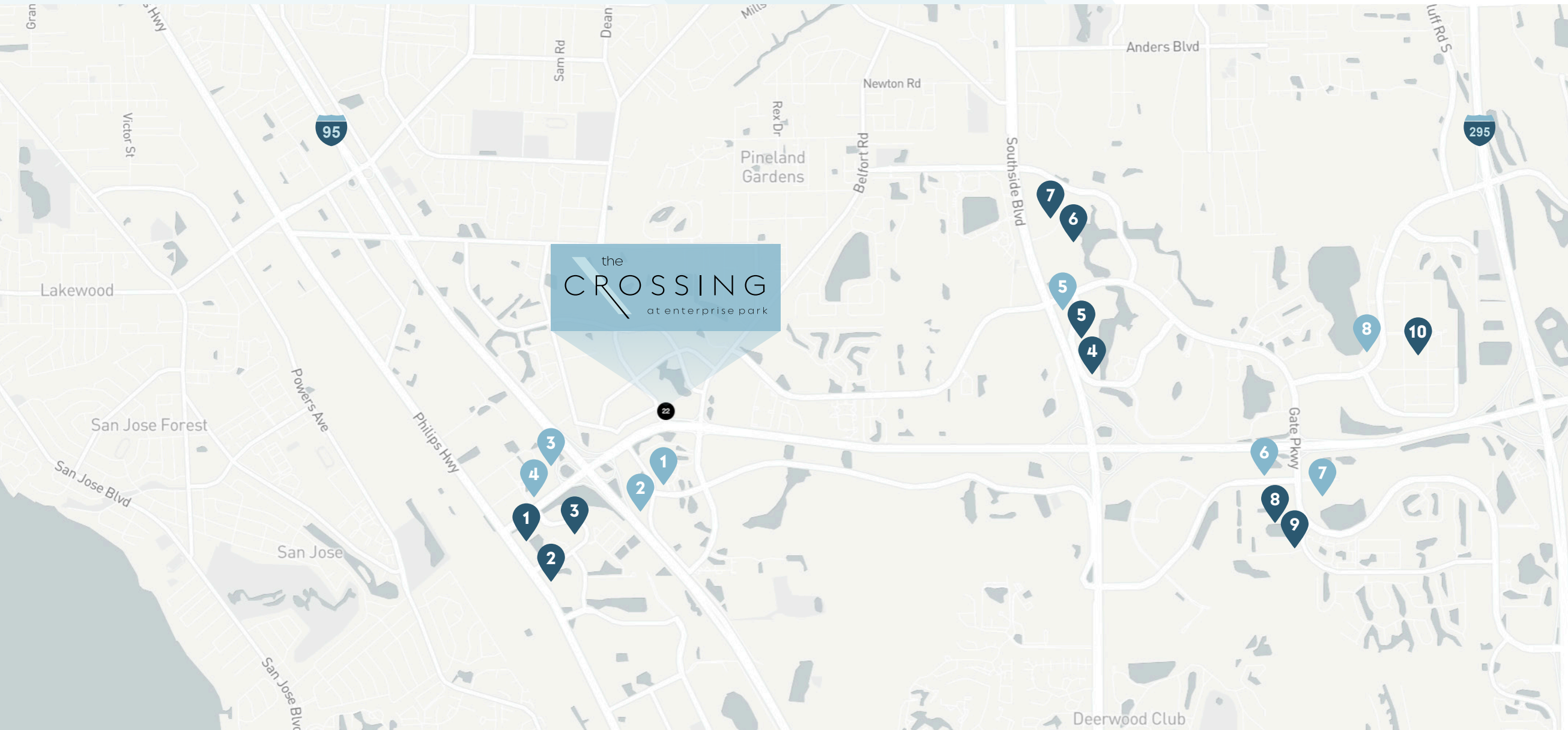


availabilities



local amenities

traffic scores



dining

1. Chick-Fil-A
2. Starbucks
3. Chicken Salad Chick
4. Ill Forks
5. Another Broken Egg
6. Mellow Mushroom
7. Millers Ale House
8. Burrito Gallery
9. Midtown Table
10. St. Johns Town Center
 - Cantina Laredo
 - The Capital Grille
 - Seasons 52
 - Firebirds Woodfire Grill
 - Chuy's
 - Ida Claire
 - Chipotle
 - Fogo de Chão
 - Cheddar's Scratch Kitchen
 - Texas de Brazil
 - Maggiano's Little Italy
 - Bahama Breeze
 - Prati Italia
 - BurgerFi
 - True Food Kitchen
 - RH Rooftop

hotels

1. Holiday Inn Express
2. Marriott Jacksonville
3. Courtyard by Marriott
4. Hampton Inn
5. Aloft Tapestry Park
6. Sheraton Jacksonville
7. Hilton Home2Suites
8. Hyatt Place

BA BRADFORD
ALLEN

the
CROSSING
at enterprise park

4345 southpoint blvd,
jacksonville, fl 32216

NOW LEASING

For more information or to arrange a tour, please contact:

Michael Loftin
Managing Director
904 559 3911
michael.loftin@jll.com

Jesse Shimp
Managing Director
904 559 3910
jesse.shimp@jll.com

© 2023 Bradford Allen. All rights reserved.

The information contained herein has been obtained from sources deemed to be reliable; however, it has not been independently verified, and no warranties, express or implied, are made as to the accuracy thereof. Any projections, opinions, assumptions, or estimates used are for example only and do not represent the current or future performance of the property. You and your advisors should conduct a thorough, independent investigation of the property to determine to your satisfaction the suitability of the property for your needs.

bradfordallen.com