

# CONTROL TOWER

For Lease

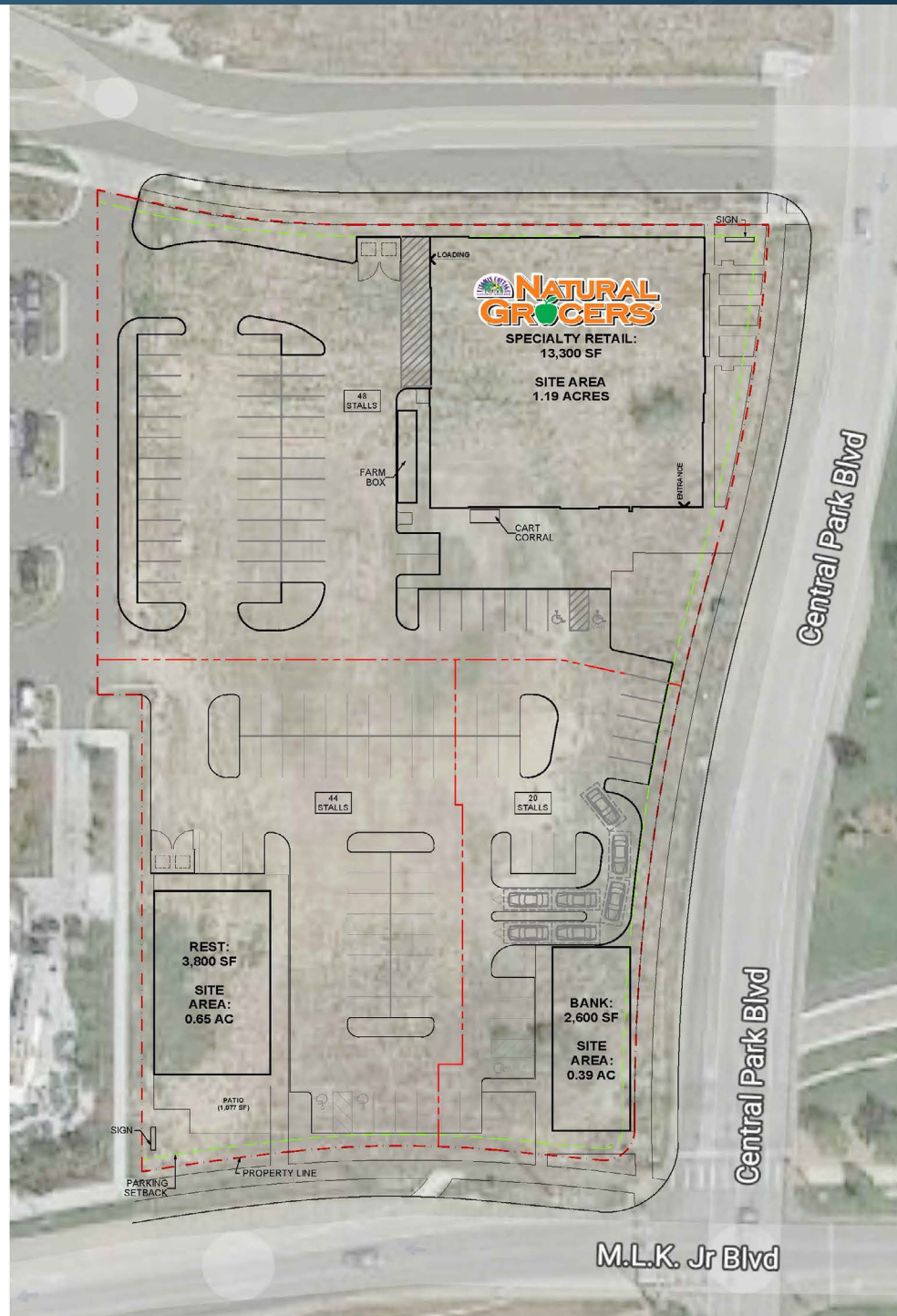
NWC of Martin Luther King Jr Blvd & Central Park Blvd | Denver, CO

JOIN NEARBY RETAILERS



# Control Tower | 2.24 Acre Retail Development

NWC of Martin Luther King Jr Blvd & Central Park Blvd | Denver, CO



# Central Park Blvd Trade Area

Denver, CO



DOWNTOWN  
DENVER



East 29th Avenue  
Town Center



SITE



Control Tower



Quebec Square



A Line Square



M.L.K. Jr Blvd  
17,539 VPD

Central Park Blvd  
29,000 VPD



# Central Park Blvd Trade Area

Denver, CO



INTERSTATE 270

INTERSTATE 70

Industrial / Flex  
695,000 SF

162,000 VPD

## The Shops At Northfield

Logos for: TEXAS, Harkins, zumiez, SEPHORA, macy's, lululemon, LUCKY STRIKE, Famous Footwear, NIKE, Old Navy, Starbucks, JCPenney, FINISH LINE, carter's, FRIDAYS, Bar Louie, Pat & Body Works, H&M, Olive Garden, DELTACO, TARGET, RED LOBSTER, PF CHANG'S, ULTA, VICTORIA'S SECRET

## Runway 35 North

Logos for: SCL Health, IN-N-OUT BURGER, chilis, Dutch Bros, PNC, Cane's

## Runway 35 South

Logos for: Fairfield BY MARRIOTT, SUPER STAR CAR WASH, Wendy's, Andy's Frozen Custard, Rocker Barrel, Chick-fil-A, QT, QuikTrip

## A Line Square

Logos for: SPROUTS FARMERS MARKET, THE JOINT chiropractic, CHASE, CLUB PILATES

## Quebec Square

Logos for: Walmart Supercenter, Sams CLUB, THE HOME DEPOT, ROSS DRESS FOR LESS, Office DEPOT, BIG 5 SPORTING GOODS, PETSMART, PANERA EXPRESS, Panera BREAD

SITE

## Control Tower

Logos for: FLYTE CO, NATURAL GROCERS, good4u

Quebec St 69,000 VPD

Central Park Blvd 29,000 VPD

M.L.K. Jr Blvd 17,539 VPD

## East 29th Avenue Town Center

Logos for: KING Scoopers, Starbucks, Orangetheory, corepower YOGA, drybar, noodles & COMPANY, pure barre, CHIPOTLE MEXICAN GRILL, Anthony's PIZZA & PASTA



# Control Tower | 2.24 Acre Retail Development

NWC of Martin Luther King Jr Blvd & Central Park Blvd | Denver, CO



## DEMOGRAPHIC HIGHLIGHTS

### 1 MILE

17,666 Population	19,879 Total Daytime Population	\$180,535 Average Household Income	6,756 Total Households
----------------------	---------------------------------------	--	------------------------------

### 3 MILES

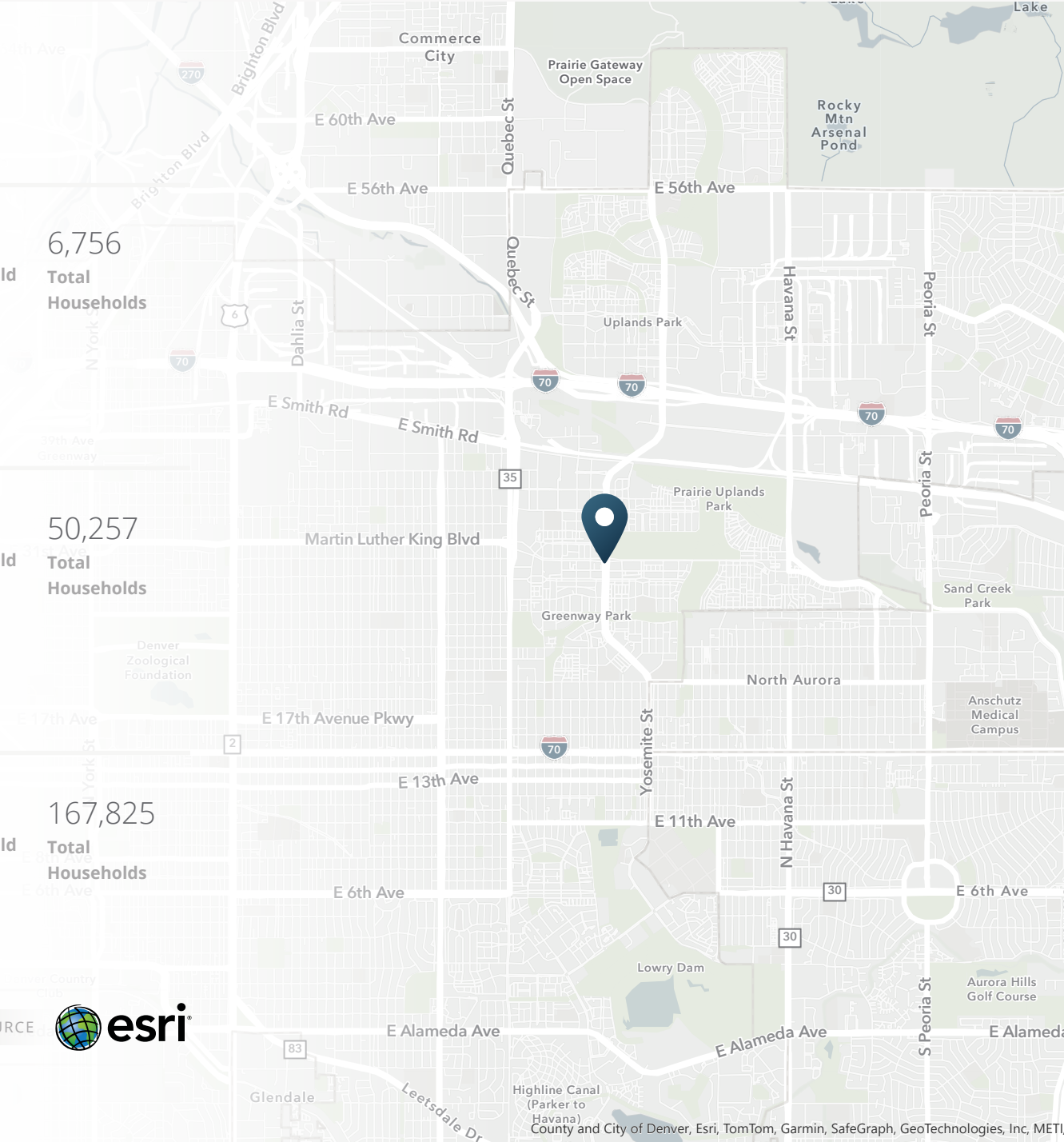
133,537 Population	161,083 Total Daytime Population	\$131,968 Average Household Income	50,257 Total Households
-----------------------	--	--	-------------------------------

### 5 MILES

406,160 Population	438,948 Total Daytime Population	\$117,877 Average Household Income	167,825 Total Households
-----------------------	--	--	--------------------------------

> **Want more?** Contact us for a complete demographic, foot-traffic, and mobile data insights report.

SOURCE 



# CONTROL TOWER

**Tony Pierangeli**  
303.390.5257  
tony.pierangeli@srsre.com

**Erik Christopher**  
303.390.5252  
erik.christopher@srsre.com

**SRS Real Estate Partners**  
1875 Lawrence Street, Suite 850  
Denver, CO 80202  
303.572.1800

