

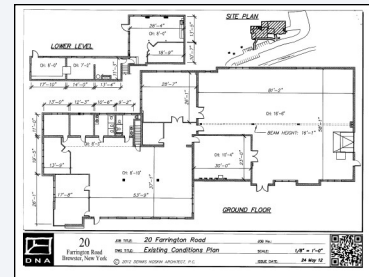


# COVINGTON COMMERCIAL REALTY

**Louis J. Bishop**  
Associate Real Estate Broker

Mail: 322 Clock Tower Commons  
Phone: 845/279-2321  
Fax : 845-279-8314  
Email: [LJBishop@CovingtonCR.com](mailto:LJBishop@CovingtonCR.com)

## AVAILABLE



### 20 FARRINGTON ROAD

Brewster, NY 10509

(Old NYS Route 6)

Industrial Flex Building. Approximately 6,000+ sq. ft of office space. 6,000+ sq. ft. of shop/warehouse/storage space. Ample parking and loading areas. One loading dock. Sprinkler System. Natural Gas

Offer Type: Lease or Sale Call Lou Bishop for Details

Building Size: 12,236 sq. ft.

Located: Between I-84/I-684 Cloverleaf in Brewster, New York and I-84 Exit 1 in Connecticut (Mill Plain Road)

All information is from sources deemed reliable and is submitted subject to error, omission, prior sale, prior lease, or withdrawal without notice and subject to approval of the purchase/lease by the owner