



**FOR SUBLEASE**

**1 ALLIED DRIVE  
LITTLE ROCK, AR 72202**

# **OFFICE SPACE AVAILABLE**

**37,233 SF±**

**FOR MORE INFORMATION  
PLEASE CONTACT:**

**RYAN GIBSON**  
501 716 5511  
rgibson@sagepartners.com

**501 716 5511**  
**sagepartners.com**

# BUILDING FEATURES

1 ALLIED DRIVE | LITTLE ROCK, AR 72202



## Property Features

Building Size:	81,810 SF +/-
Space Available:	37,233 SF +/- Total <ul style="list-style-type: none"><li>• 2nd Floor - 12,411 SF +/-</li><li>• 3rd Floor - 12,411 SF +/-</li><li>• 4th Floor - 12,411 SF +/-</li></ul>
Year Built:	1982
Parking:	4.70/1,000 SF
Sublease Rate:	\$17.00/SF (Full Service)
Lease Expiration:	December 31, 2025 Longer term direct lease available
Existing FFE:	Can be included
Location:	Well situated in the Riverdale Office Market with river views and many nearby amenities including restaurants, shops, and walking/biking trails



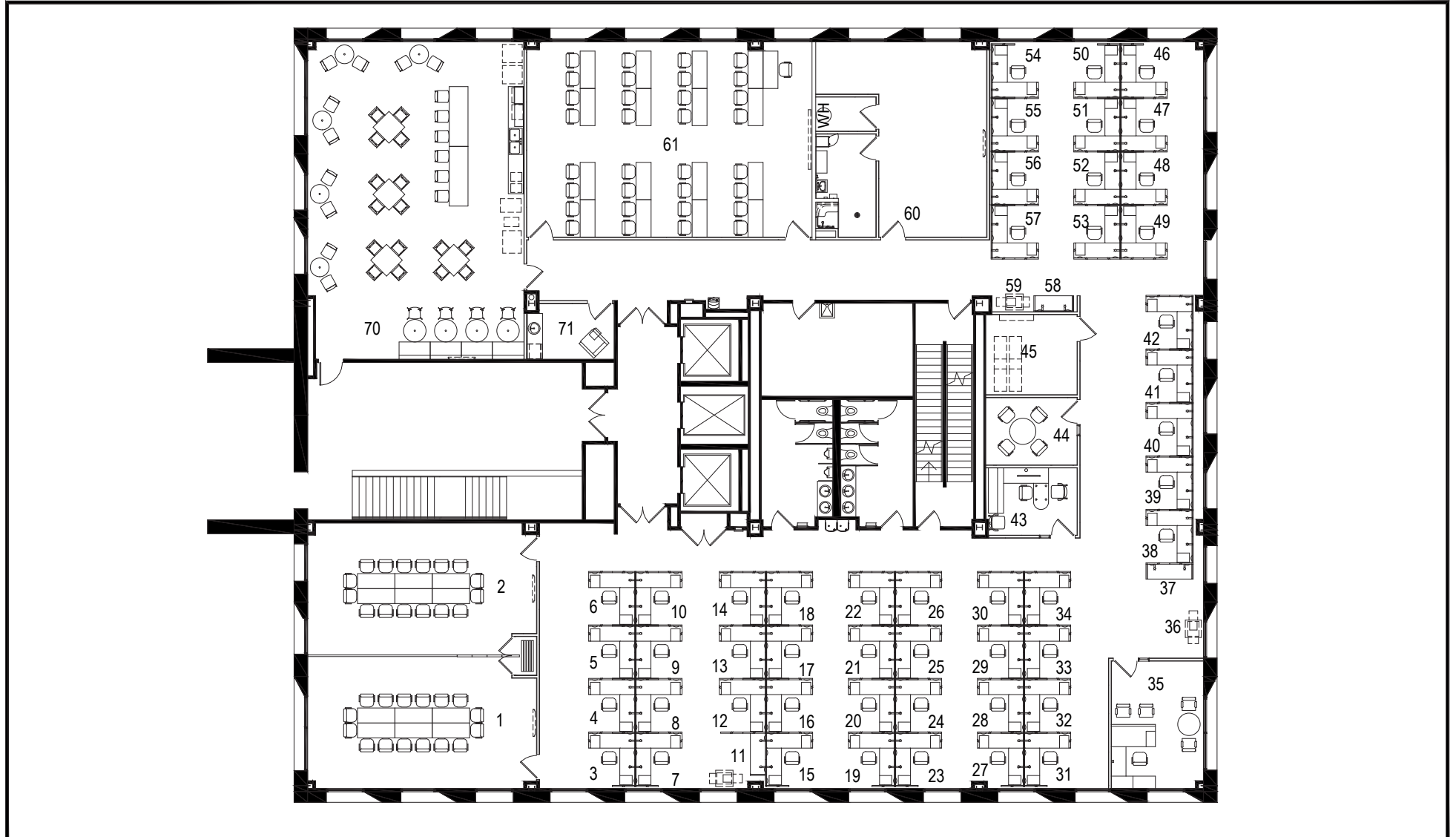
\*information deemed reliable but not guaranteed

# 2ND FLOOR FLOORPLAN

1 ALLIED DRIVE | LITTLE ROCK, AR 72202



## 1 ALLIED DRIVE, LITTLE ROCK, AR, 2nd FLOOR



FOR INTERNAL USE ONLY

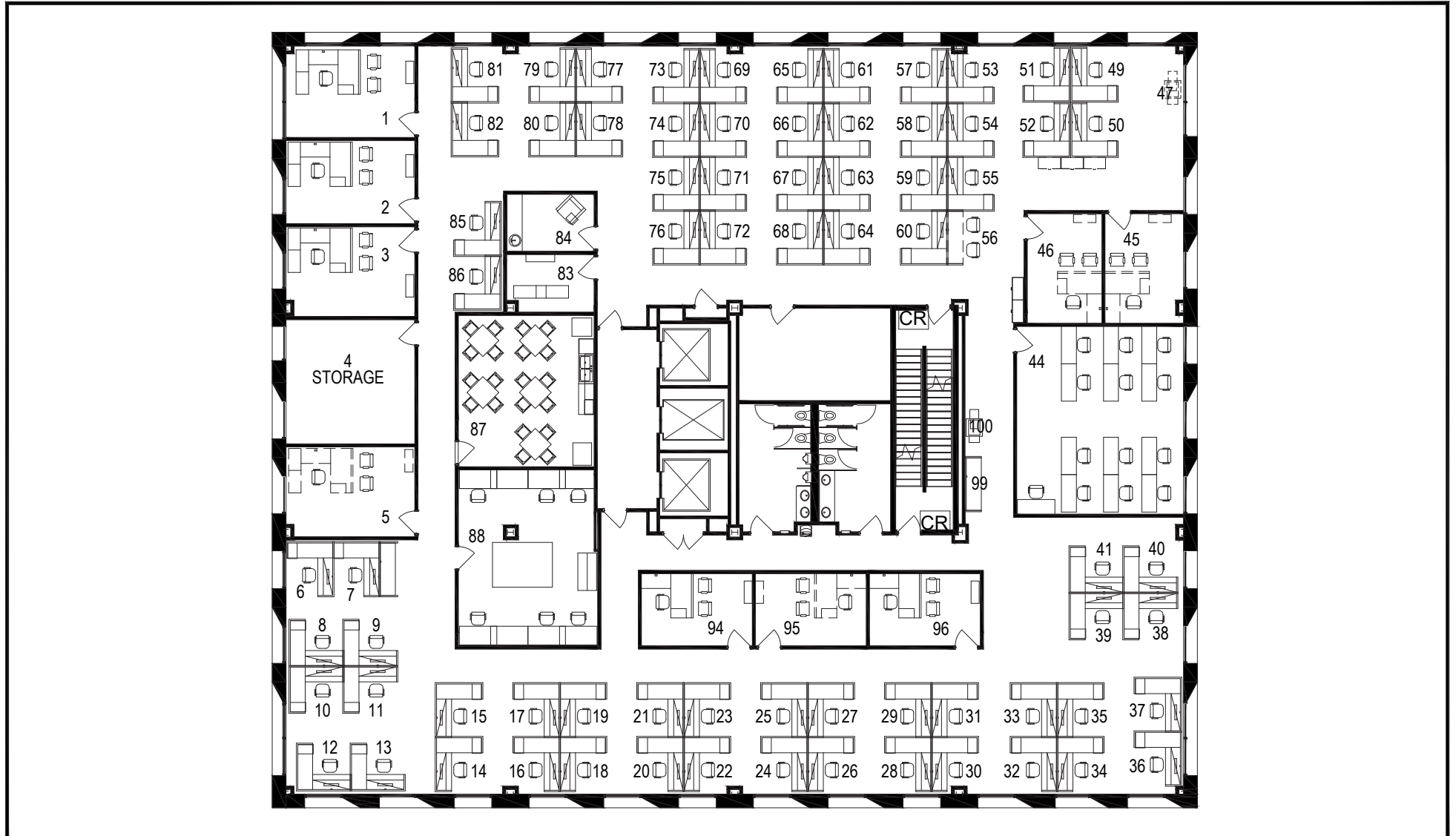
CENTENE CORPORATION

# 3RD FLOOR FLOORPLAN

1 ALLIED DRIVE | LITTLE ROCK, AR 72202



## 1 ALLIED DRIVE, LITTLE ROCK, AR, 3rd FLOOR



FOR INTERNAL USE ONLY

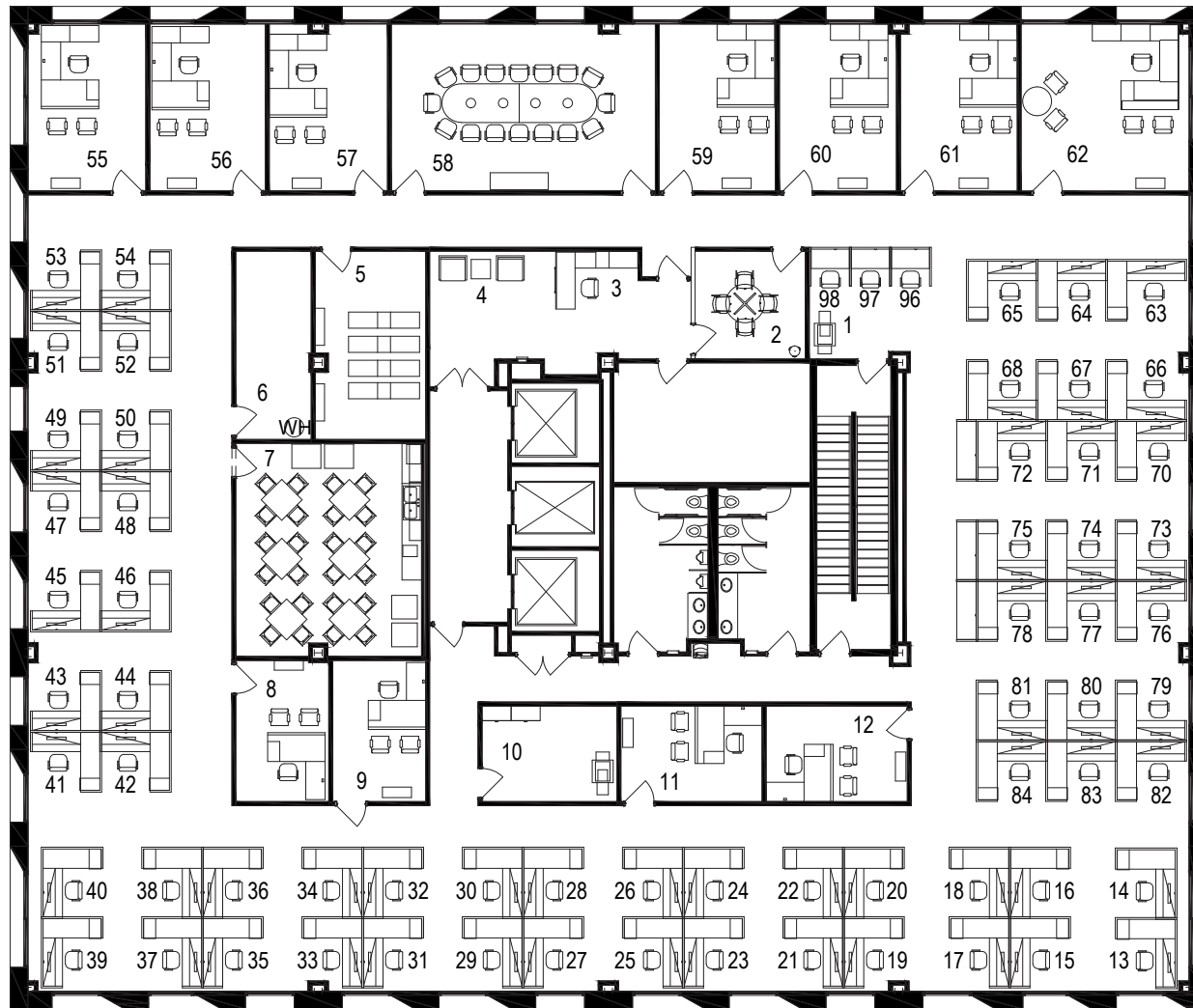
CENTENE CORPORATION

# 4th FLOOR FLOORPLAN

1 ALLIED DRIVE | LITTLE ROCK, AR 72202



1 ALLIED DRIVE, LITTLE ROCK, AR, 4th FLOOR



FOR INTERNAL USE ONLY

CENTENE CORPORATION

# SITE MAP

1 ALLIED DRIVE | LITTLE ROCK, AR 72202



THE HEIGHTS

ARKANSAS RIVER

NORTH LITTLE ROCK



HILLCREST



Stephens Inc.



DOWNTOWN LITTLE ROCK