

> Corporate Campus for Sale

3 Buildings - total ± 15,645 SF

140 & 150 Dog Track Road  
Longwood, FL 32750



**CRE ADVISORS**  
BROKERAGE • LEASING • ADVISORY



**Asking Price:**  
**\$3,299,000**



**7,643 sq ft Professional Office**  
**5,862 sq ft Training Center**  
**2,200 sq ft Warehouse**

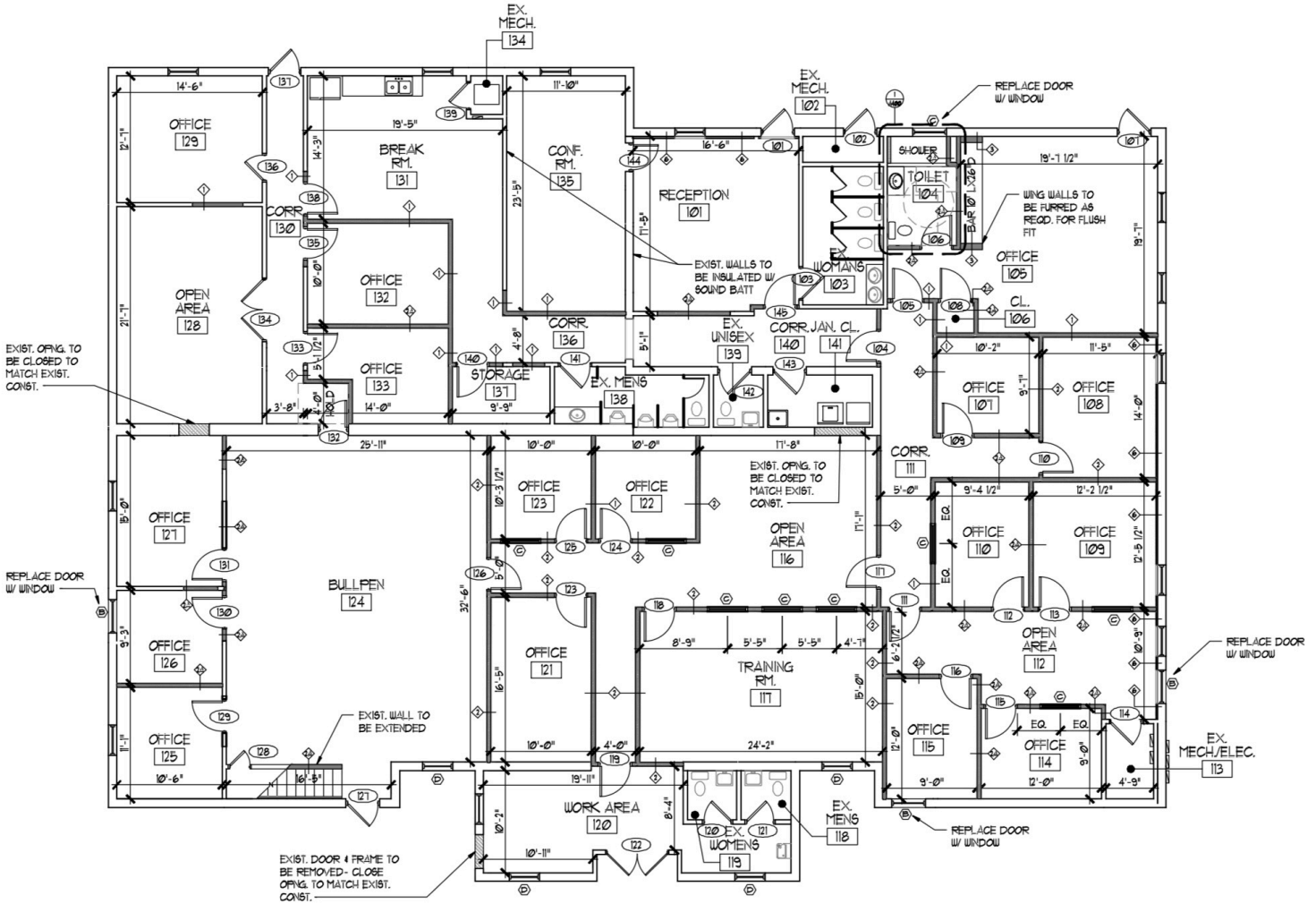
**Todd Haber**  
**President**  
**407.739.0835**  
**[Todd@CREadvisorsllc.com](mailto:Todd@CREadvisorsllc.com)**

**1801 Lee Road, Suite 215**  
**Winter Park, FL 32789**  
**[www.CREadvisorsllc.com](http://www.CREadvisorsllc.com)**

The information contained herein has been given to us by the owner of the property or other sources we deem reliable. We have no reason to doubt its accuracy, but we do not guarantee it. All information should be verified prior to purchase or lease. Unless otherwise noted, the property is being offered as-is, where is, with all faults.

> Corporate Campus for Sale  
 ± 15,645 SF over 3 buildings  
 140 & 150 Dog Track Road, Longwood, FL 32750

150 Dog Track  
 7,613 SF



1 FIRST FLOOR PLAN  
 SCALE: 1/8" = 1'-0"



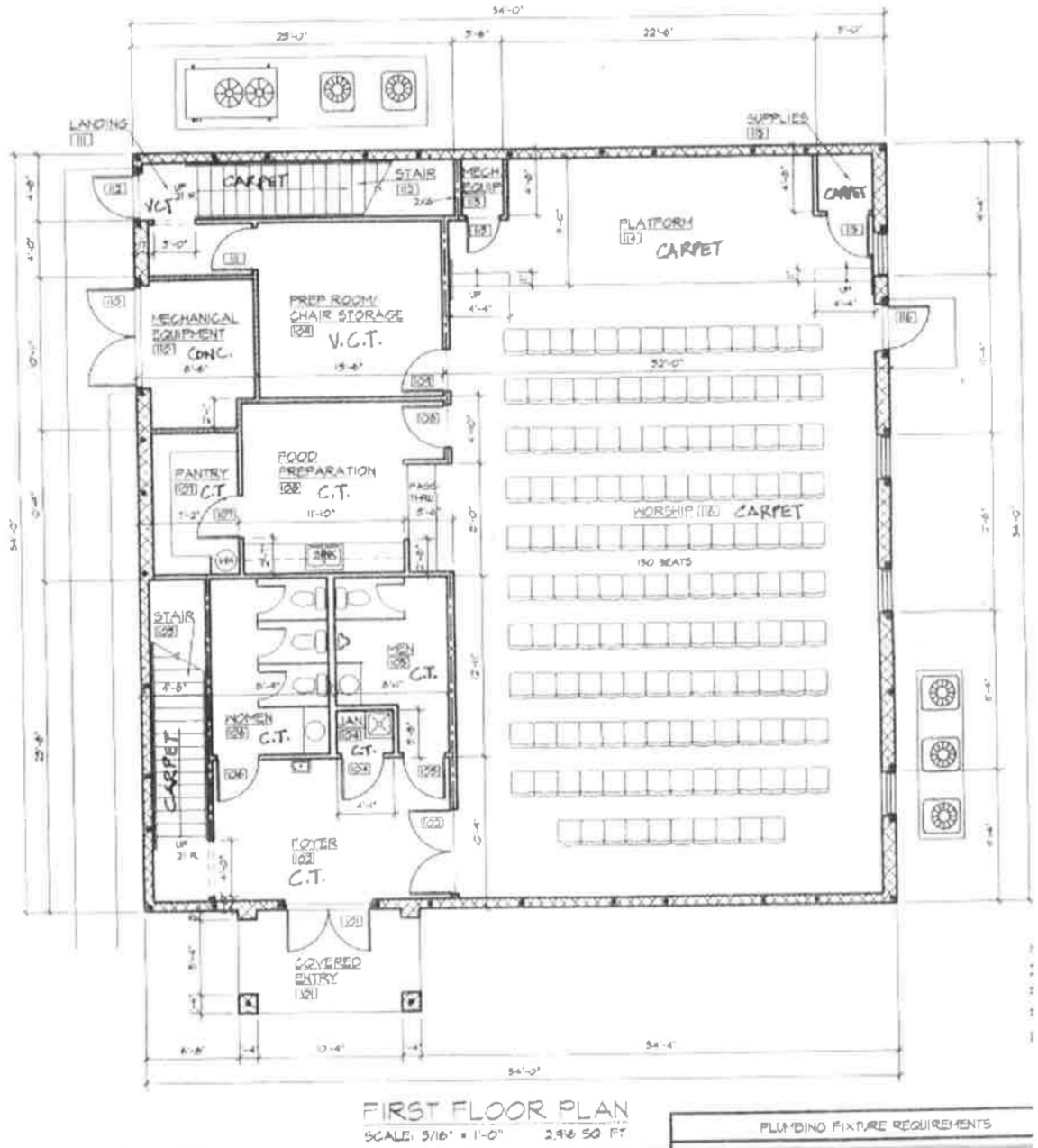
1801 Lee Road, Suite 215  
 Winter Park, FL 32789  
[www.CREadvisorsllc.com](http://www.CREadvisorsllc.com)

Todd Haber  
 President  
 407.739.0835  
[Todd@CREadvisorsllc.com](mailto:Todd@CREadvisorsllc.com)

> Corporate Campus for Sale  
 ± 15,645 SF over 3 buildings  
 140 & 150 Dog Track Road, Longwood, FL 32750

140 Dog Track  
 5,862 SF  
 1st floor

FIRST FLOOR PLAN FOR CLASSROOM BUILDING



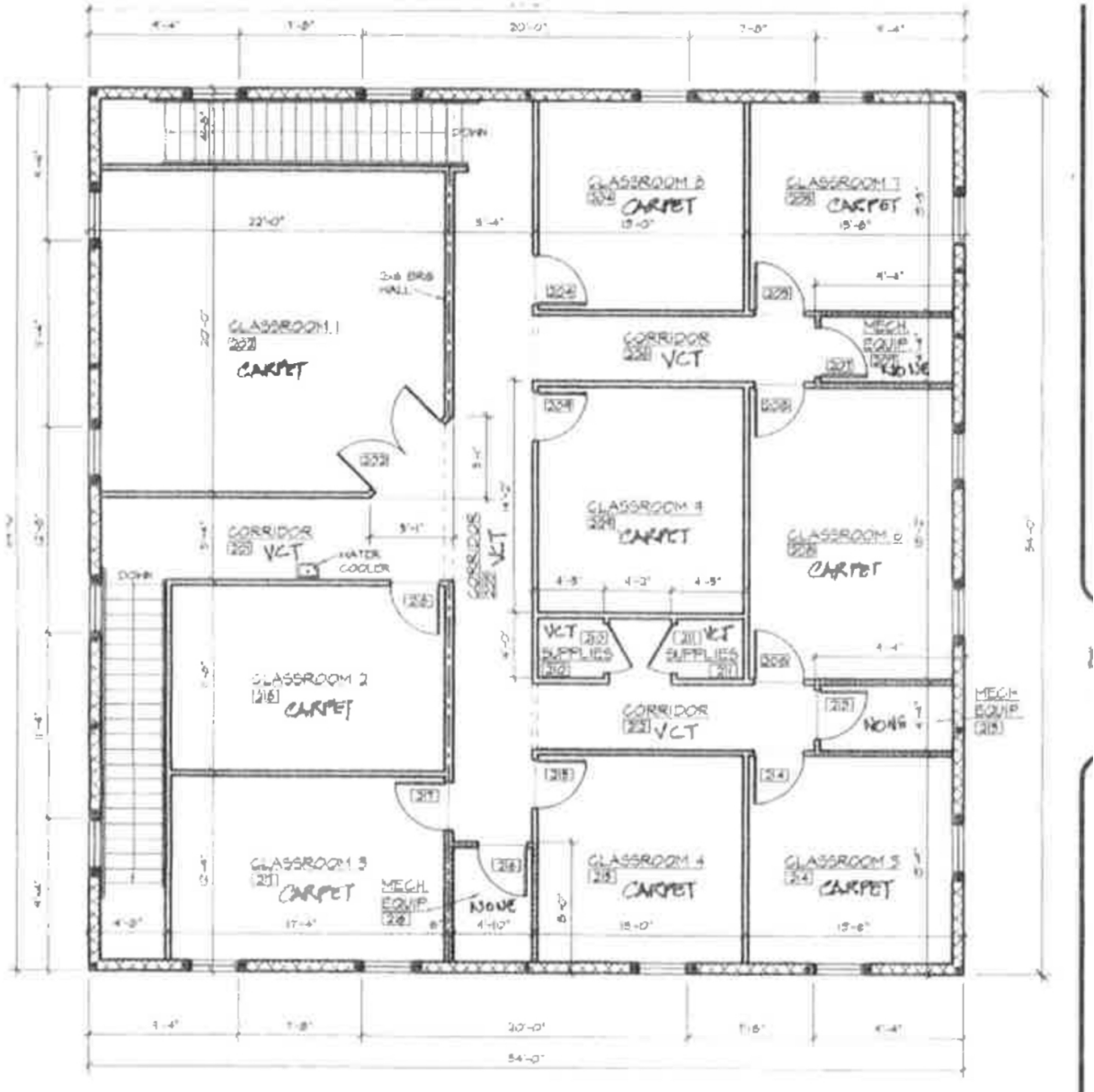
1801 Lee Road, Suite 215  
 Winter Park, FL 32789  
[www.CREadvisorsllc.com](http://www.CREadvisorsllc.com)

Todd Haber  
 President  
 407.739.0835  
[Todd@CREadvisorsllc.com](mailto:Todd@CREadvisorsllc.com)

> Corporate Campus for Sale  
 ± 15,645 SF over 3 buildings  
 140 & 150 Dog Track Road, Longwood, FL 32750

140 Dog Track  
 5,862 SF  
 2nd floor

**SECOND FLOOR PLAN FOR CLASS ROOM BUILDING**



1801 Lee Road, Suite 215  
 Winter Park, FL 32789  
[www.CREadvisorsllc.com](http://www.CREadvisorsllc.com)

Todd Haber  
 President  
 407.739.0835  
[Todd@CREadvisorsllc.com](mailto:Todd@CREadvisorsllc.com)

> Corporate Campus for Sale

± 15,645 SF over 3 buildings

140 & 150 Dog Track Road, Longwood, FL 32750

**Warehouse**

**2,200 sf**



**CRE ADVISORS**  
BROKERAGE • LEASING • ADVISORY

1801 Lee Road, Suite 215  
Winter Park, FL 32789  
[www.CREadvisorsllc.com](http://www.CREadvisorsllc.com)

Todd Haber  
President  
407.739.0835  
[Todd@CREadvisorsllc.com](mailto:Todd@CREadvisorsllc.com)