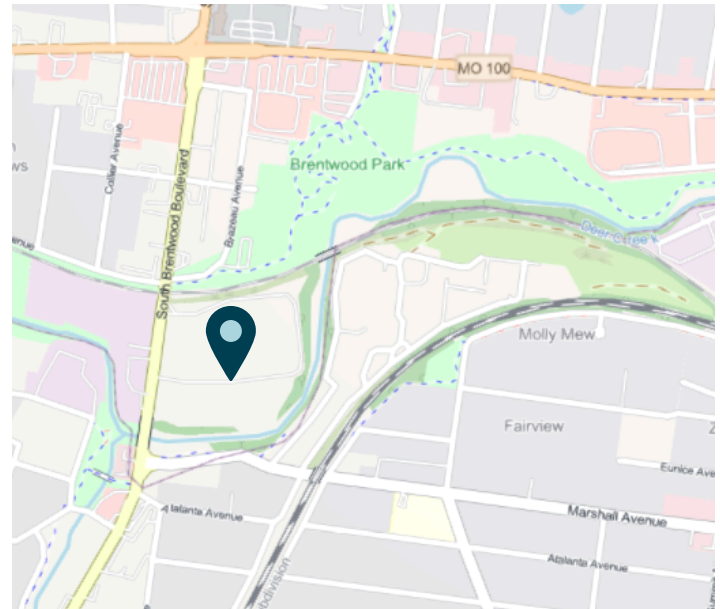
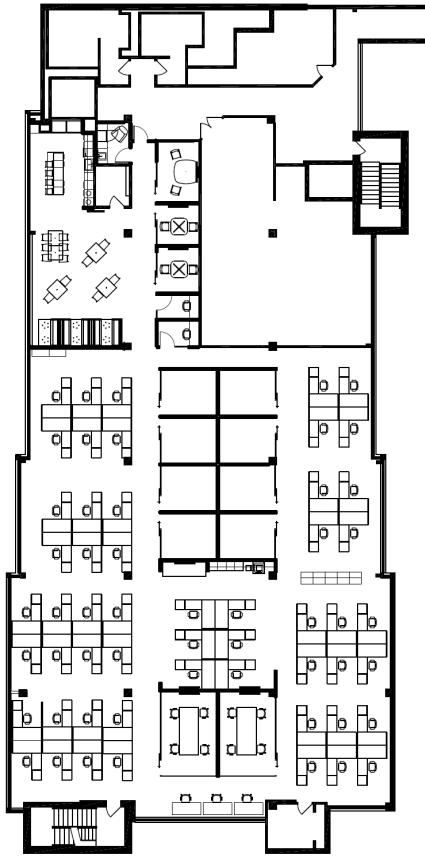


# For sublease

10,615 RSF of Office Space  
Available

345 Marshall Avenue  
Webster Groves, MO



#### Location

- 18 minutes to Downtown St. Louis
- 20 minutes to St. Louis Lambert International Airport



345 Marshall Avenue  
Webster Groves, MO

## Premises

Suite 201: 10,615 RSF

## Sublease Term

Through September  
30, 2029

## Features

- Walk-in ready suite with furniture available
- Premier office campus with professional landscaping, sculpture gardens, prominent architecture, and direct access to Deer Creek Greenway.

## Net Rental Rate

Call broker for pricing





**David Steinbach**

Senior Managing Director

[david.steinbach@jll.com](mailto:david.steinbach@jll.com)

+1 314 494 6410