

# 1016 NEW MARKET STREET

PHILADELPHIA, PA 19123

*NORTHERN LIBERTIES*

GROUND  
FLOOR SPACE



## 6,407 SF OF GROUND FLOOR OFFICE/RETAIL/FLEX SPACE AVAILABLE FOR LEASE

EXCLUSIVELY  
REPRESENTED BY  
THE FLYNN COMPANY

**BRENDAN FLYNN**  
BFLYNN@FLYNNCO.COM  
215-561-6565 X 152

**MICHAEL GALLAGHER**  
MGALLAGHER@FLYNNCO.COM  
215-561-6565 X 151

**JOSEPH NASELLI**  
JNASELLI@FLYNNCO.COM  
215-561-6565 X 155

### PROPERTY HIGHLIGHTS

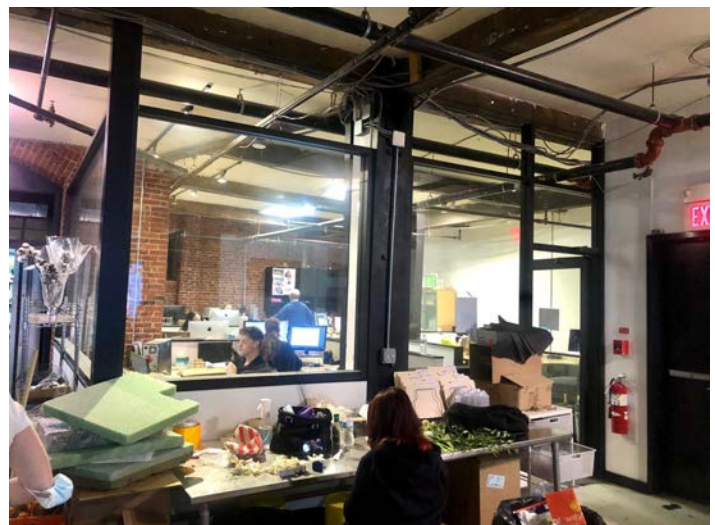
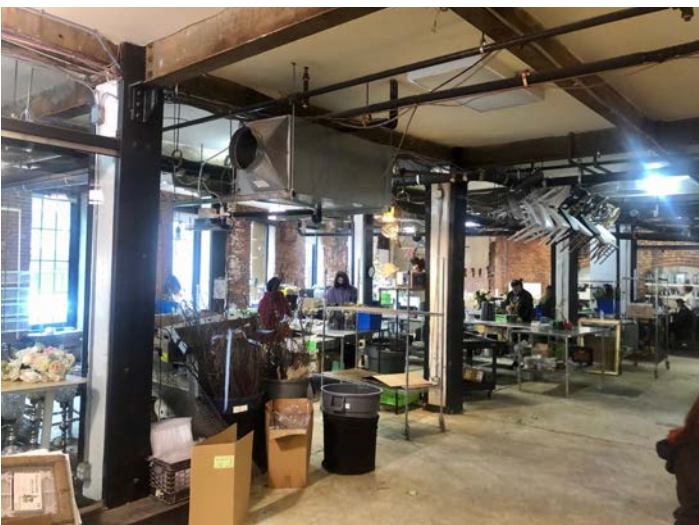
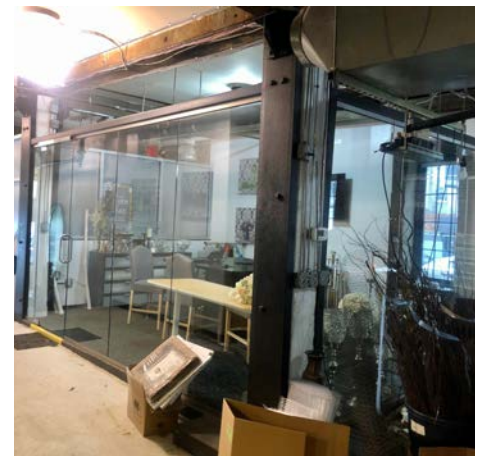
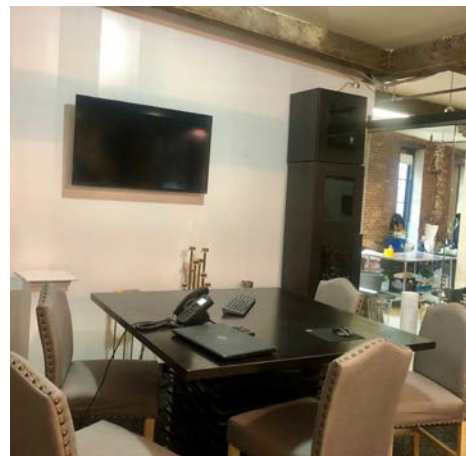
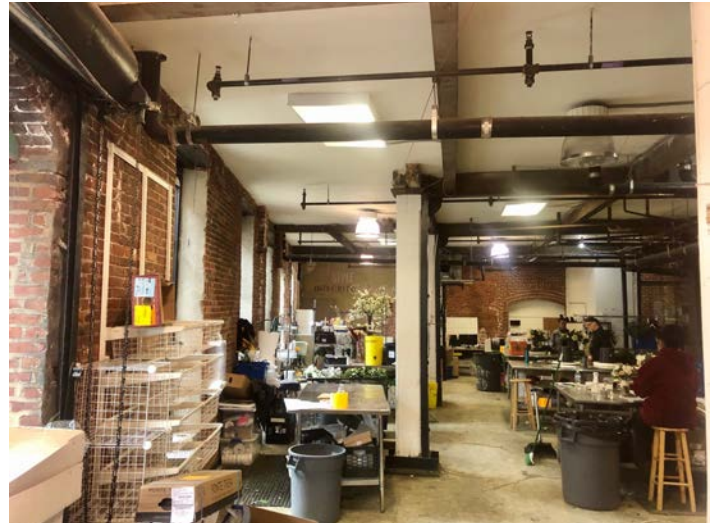
- 6,407 SF on the ground floor of The Carriage Wheel Lofts building
- Industrial loft aesthetic with glass-walled offices/conference rooms, exposed steel columns/beams, high ceilings, concrete floors, large walk-in refrigerator and ramped loading from the street
- Exclusive store front entrance
- 30-minute loading zone directly in front of entrance
- Situated adjacent to The Piazza in the heart of Northern Liberties; walkable to countless restaurants, entertainment venues and
- 5-minute walk to SEPTA 15 trolley stop at Frankford and Delaware Ave
- 5-minute walk to SEPTA stops for buses 5 and 25
- 5-minute walk to off-street parking at The Fillmore lot

The  
Flynn  
Company

THE FLYNN COMPANY

WWW.FLYNNCO.COM | 1621 WOOD STREET, PHILADELPHIA, PA 19103 | 215.561.6565

## PROPERTY PHOTOS



**For More Information  
Please Contact:**

**BRENDAN FLYNN**  
BFLYNN@FLYNNCO.COM  
215-561-6565 X 152

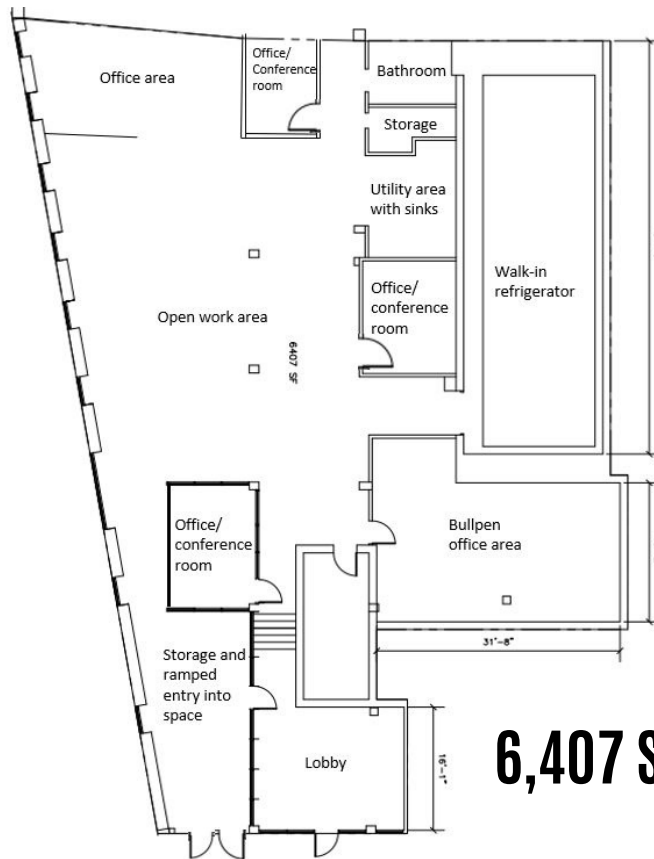
**MICHAEL GALLAGHER**  
MGALLAGHER@FLYNNCO.COM  
215-561-6565 X 151

**JOSEPH NASELLI**  
JNASELLI@FLYNNCO.COM  
215-561-6565 X 155

### LOCATION



### FLOOR PLAN



## 6,407 SF | Ground Floor

For More Information  
Please Contact:

**BRENDAN FLYNN**  
BFLYNN@FLYNNCO.COM  
215-561-6565 X 152

**MICHAEL GALLAGHER**  
MGALLAGHER@FLYNNCO.COM  
215-561-6565 X 151

**JOSEPH NASELLI**  
JNASELLI@FLYNNCO.COM  
215-561-6565 X 155