 **JLL** SEE A BRIGHTER WAY

# For sale

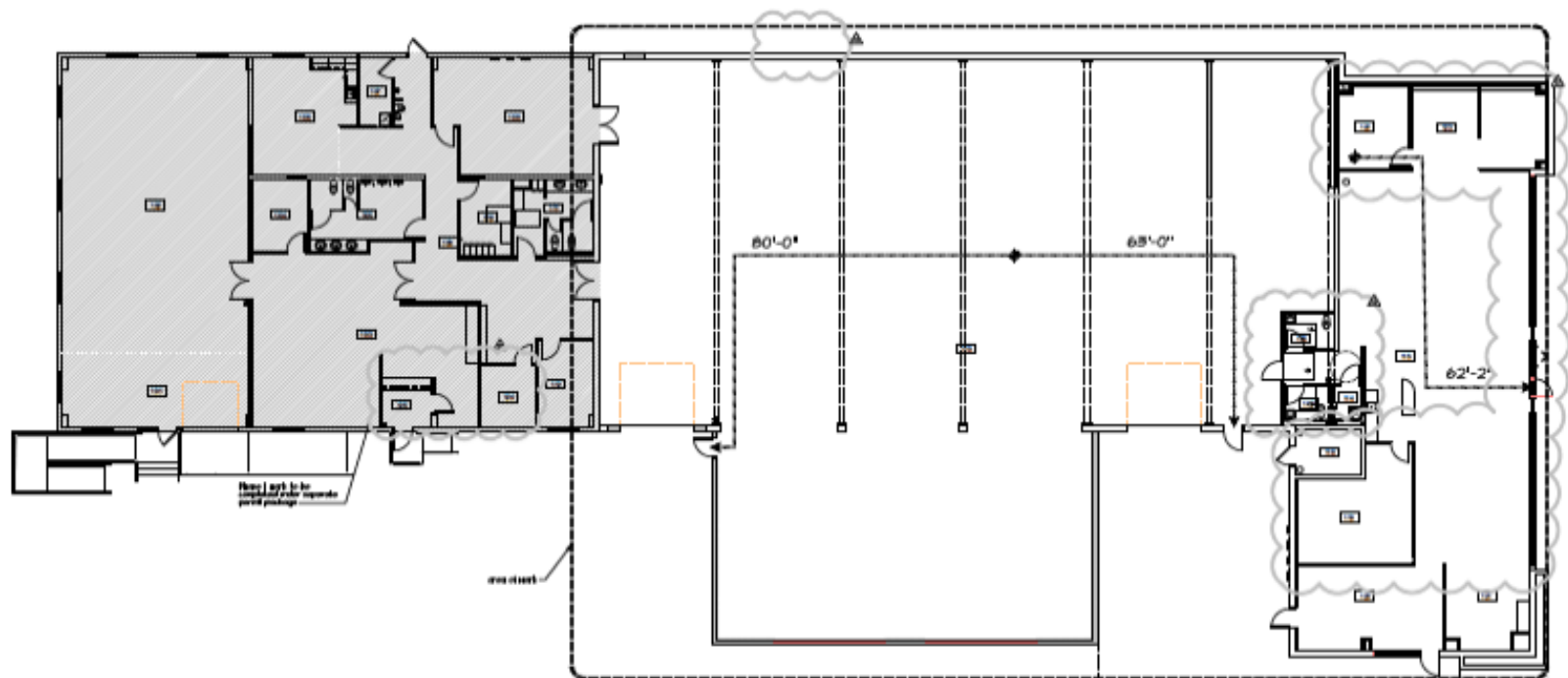
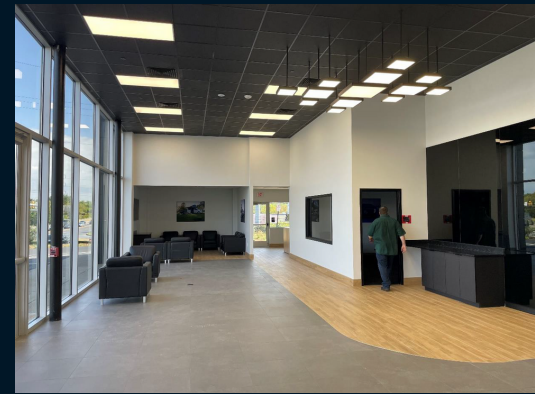
1.7 acres

18,133 SF

## Property specifications

- Automobile service and sales facility
- Fully renovated in 2021
- C-commercial zoning in Plymouth Township
- Phenomenal location off the I-476 exit at Ridge Pike in Conshohocken

# 1001 Ridge Pike Conshohocken, PA



**Patrick Brady**  
Executive Vice President  
patrick.brady@jll.com  
+1 215 771 0108

**Jones Lang LaSalle Brokerage, Inc.**  
550 E. Swedesford Road, Suite 260  
Wayne, PA 19087  
+1 610 249 2255