

FOR LEASE – INDUSTRIAL COLD STORAGE BUILDING

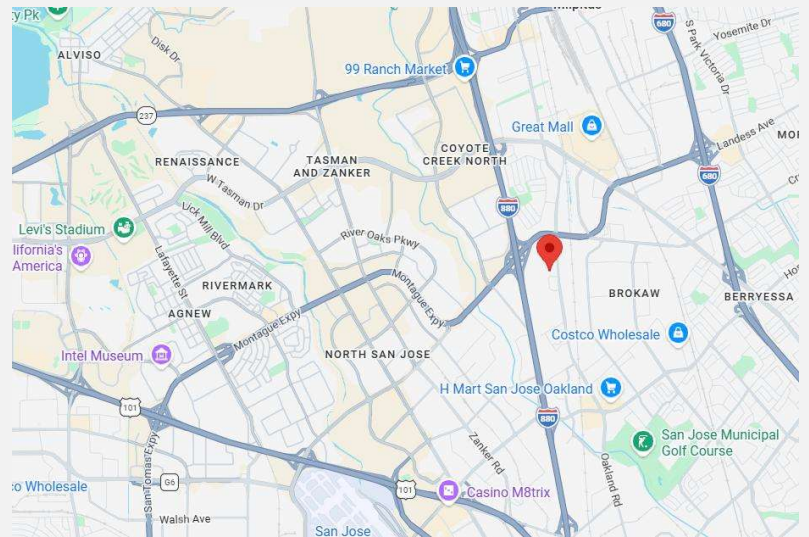
KPA
COMMERCIAL

1471 ATTEBERRY LANE
SAN JOSE, CA



PROPERTY SUMMARY

- Building Size: ±14,241 SF
- Large Fenced Yard (±19,000 SF)
- Drive Around Access
- Sprinklered
- Cooler and Freezer
- 18' Clear Height
- Covered Double Dock Door
- 10 Dock Doors in Fenced Area
- 2 Grade Doors
- 400 AMPS (Tenant to Verify)
- Easy Access to 880/680/101/237
- Occupied and Available with 60-90 Days' Notice
- Please Call to Tour



Kevin Peixoto
KPA Commercial, Inc.
408.898.0177
CalDRE No. 01411086
kevin@kpacommercial.com

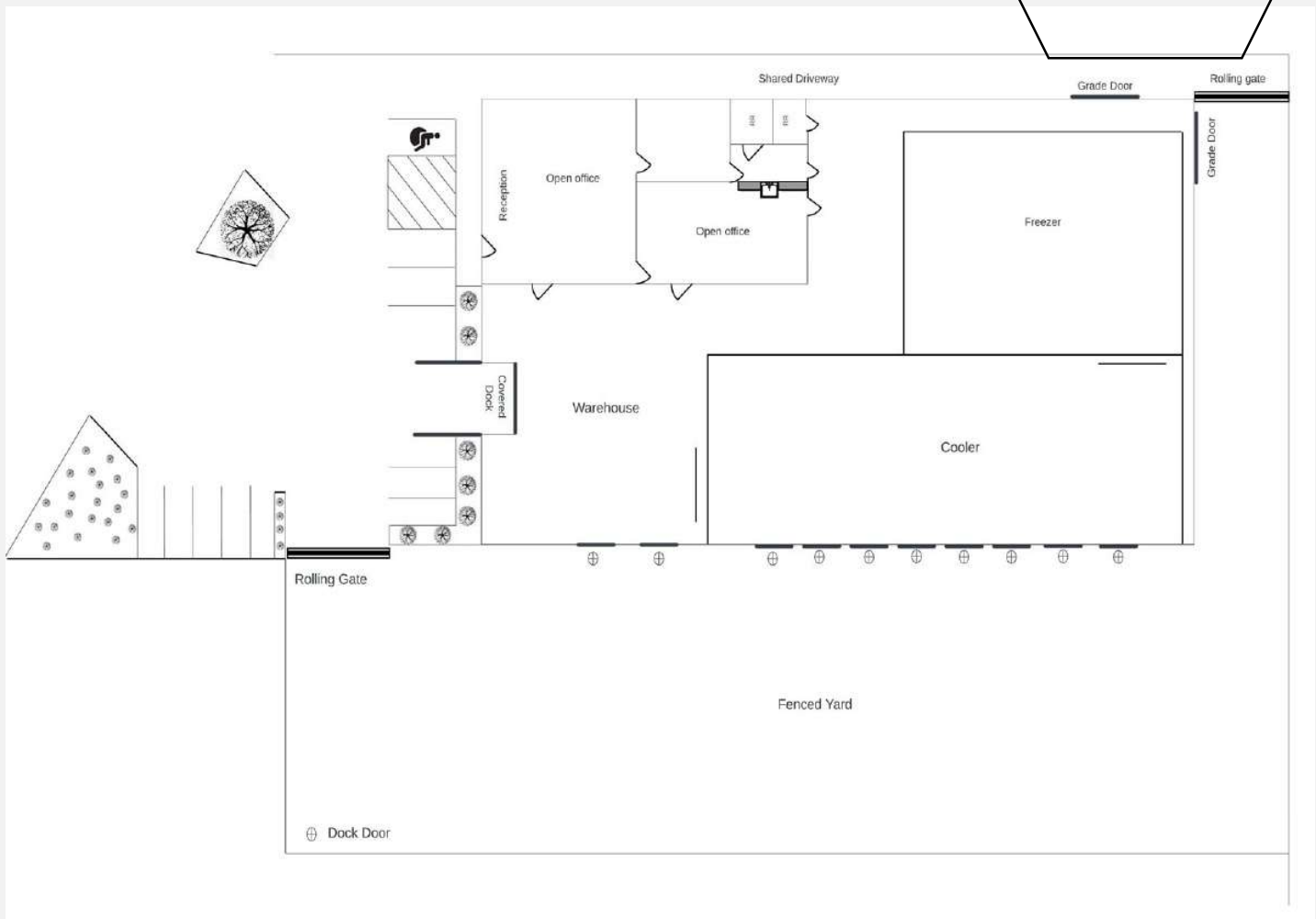
KPACOMMERCIAL.COM

The information contained herein was obtained from sources believed reliable; however, KPA Commercial, Inc. and its agents make no guarantee, warranty or representation, either expressed or implied, as to the completeness or accuracy thereof. The presentation of this property is submitted subject to errors, omissions, change of price, statements of income and expenses or conditions prior to sale or lease, or withdrawal without notice. Prospective Tenants and Buyers should consult their accountant, legal counsel or other professional advisor.

FOR LEASE - INDUSTRIAL COLD STORAGE BUILDING

KPA
COMMERCIAL

1471 ATTEBERRY LANE
SAN JOSE, CA



***Not to Scale**

Kevin Peixoto
KPA Commercial, Inc.
408.898.0177
CaLDRE No. 01411086
kevin@kpacommercial.com

KPACOMMERCIAL.COM

The information contained herein was obtained from sources believed reliable; however, KPA Commercial, Inc. and its agents make no guarantee, warranty or representation, either expressed or implied, as to the completeness or accuracy thereof. The presentation of this property is submitted subject to errors, omissions, change of price, statements of income and expenses or conditions prior to sale or lease, or withdrawal without notice. Prospective Tenants and Buyers should consult their accountant, legal counsel or other professional advisor.