



RC Willey COMMONS

276 S. 5600 W.
SALT LAKE CITY, UT



RETAIL + FLEX INDUSTRIAL FOR LEASE

Industrial

Don L. Enlow, SIOR
Executive Vice President
+1 801 560 3551
don.enlow@colliers.com

Marcy Pitman
Branch Broker
+1 801 947 8330
marcy.pitman@colliers.com

Retail

Steve Bowler
Executive Vice President
+1 801 947 8396
steve.bowler@colliers.com

Kelsie Bowler, MRED
Retail Specialist
+1 801 947 8353
kelsie.bowler@colliers.com



Site Plan



5600 W - 22,000 ADT

Property Features

- New development located in strong, growing industrial area
- Located just off I-80 and one mile from the new Mountain Corridor extension
- Flex industrial space available for lease
- Retail pads and shop space available for lease, build to suit and ground lease
- NNN: \$7.24 psf
- Developed by: RC Willey



Available Retail



Available Industrial/Flex



Available Industrial BTS

Area Overview



Less than one mile I-80, providing the first services along EB I-80 in 45 minutes



Less than one mile from the new Mountain View Corridor



Less than 10 minutes from Salt Lake City International Airport, recent completion of \$3.6B redevelopment

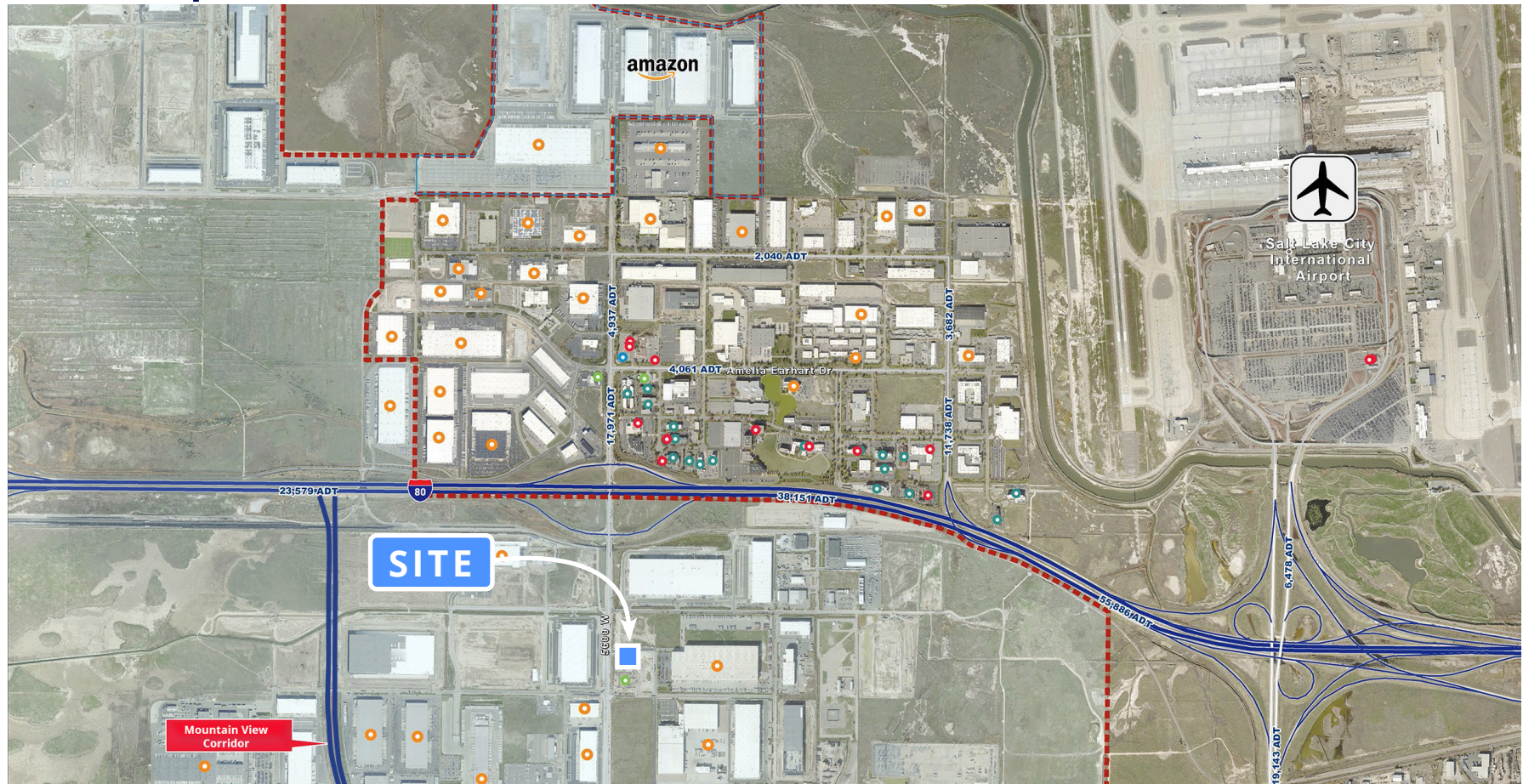


Approximately 2,383 hotel rooms within one mile of the site

Vast industrial growth in the area has led to large numbers of employees in the area with limited services. **Total area employees (2025):**

	1 Mile Radius	3 Mile Radius	5 Mile Radius
	2,769	21,883	85,659
	Fulfillment Center 1,500 Employees		NICHOLAS AND COMPANY Distribution Center 550 Employees
	Fabrication Center 300 Employees	HunterDouglas Customer Service Center 230 Employees	
		Distribution Center 225 Employees	Manufacturing Center 204 Employees

Area Map



Industrial Tenants

- Albany Engineered Composites
- Amazon
- Bard Access Systems
- Basic Research
- Biomerics
- Bishops Central Storehouse
- Brady
- Compax
- Costco Dist. Center
- Easton Dist. Center
- Excel Worldwide Logistics
- Expeditors
- FedEx Freight
- FFE Transport. Service
- Fox 13 Studios
- GE Healthcare
- HemaSource
- Hensley Battery & Electrics
- HNI Western Regional Dist.
- Hunter Douglas Fabrication
- Jacobson Construction
- Nicholas & Company
- O'Reilly Automotive Dist. Center
- PCA
- Power Distributors
- Quality Distribution
- RC Willey Dist. Center
- Regis Salons Dist. Center
- Select Comfort Manufacturing Factory

Hotels

- Aloft Hotel
- Best Western Plus
- Comfort Inn
- Courtyard by Marriot
- DoubleTree
- Inn & Suites by Hilton
- Fairfield Inn & Suites
- Four Points by Sheraton
- Sephora Dist. Center
- Sierra Forest Products
- Stadler
- Tosca
- UPS Regional Hub
- 1-800 Contacts Dist. Center

Gas Stations

- Maverick
- Hampton Inn
- Hilton Garden Inn
- Holiday Inn
- Homewood Suites
- Hyatt Place
- La Quinta Inn & Suites
- Microtel Inn & Suites
- Ramada Inn
- Residence Inn Springhill Suites
- Staybridge Suites
- Super 8
- TownePlace Suites
- Tru by Hilton

Restaurants

- Phillips 66
- Amelias
- Cedar Creek Grill
- Chang Chun Chinese
- Courtyard Cafe
- Grill 114
- Happy Teriyaki
- Port of Subs
- Perkins
- Roberts Restaurant
- Subway
- Wing Tips

Inland Port Boundary Line

Property Photos



For more information, contact:

Industrial

Don L. Enlow, SIOR
Executive Vice President
+1 801 560 3551
don.enlow@colliers.com

Marcy Pitman
Branch Broker
+1 801 947 8330
marcy.pitman@colliers.com

Retail

Steve Bowler
Executive Vice President
+1 801 947 8396
steve.bowler@colliers.com

Kelsie Bowler, MRED
Retail Specialist
+1 801 947 8353
kelsie.bowler@colliers.com

