

845-855 MOOWAA ST

HONOLULU, HI 96817



INDUSTRIAL SPACES
FOR LEASE

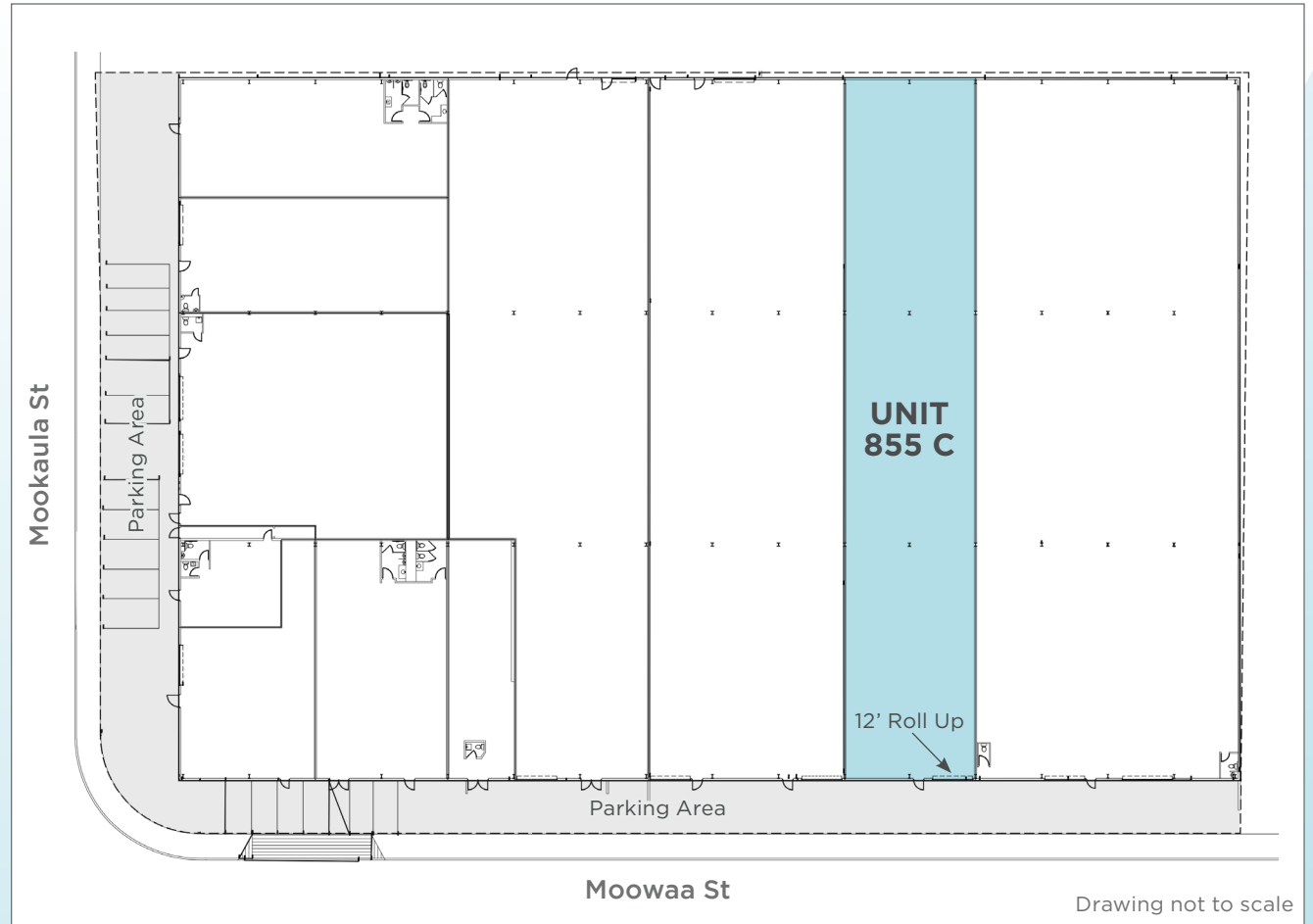


ChaneyBrooks

Unit 855 C

8,412 SF

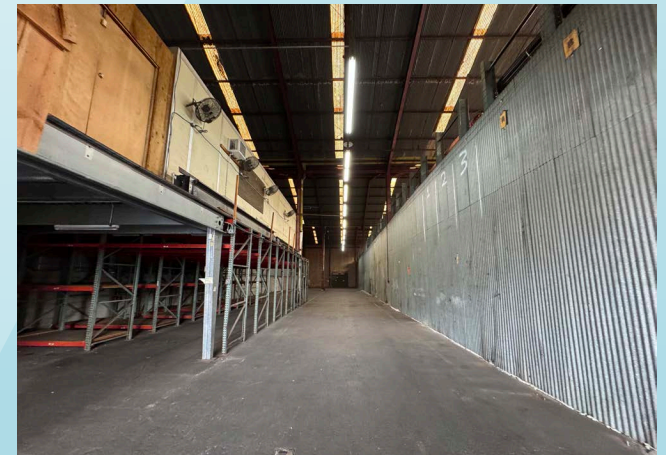
Unit 855 C offers a total of 8,412 square feet of versatile industrial space, zoned IMX-1 for industrial use. This unit features high ceilings and a convenient roll-up door, making it ideal for a variety of industrial, warehouse, or distribution needs. The space includes ample second-floor office area, providing a functional layout for both administrative and operational activities. Restroom facilities are available on both the ground floor warehouse and the second-floor office for added convenience. This unit presents an excellent opportunity for businesses seeking a flexible, well-located space in the heart of Honolulu's industrial core.



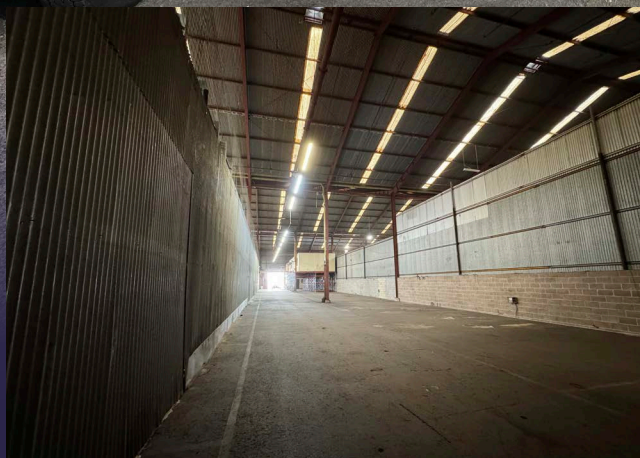
Drawing not to scale

Property Summary

ADDRESS	845-855 Moowaa St Honolulu, HI 96817
BASE RENT	\$1.45 SF/MO
CAM	\$0.65 SF/MO
SIZE	8,412 SF
ZONING	IMX-1



Unit 855 C
8,412 SF



Unit 1251

5,415 SF

Unit 1251 offers 5,415 square feet of high-cube warehouse space in one of Honolulu's premier industrial corridors. Strategically located off Moowaa Street and Mookaula Street, the property provides convenient access to Nimitz Highway, H-1 Freeway, and Honolulu Harbor, making it ideal for distribution and logistics users.

Zoned IMX-1, the space accommodates a wide range of industrial uses including warehousing, light manufacturing, contractor storage, and wholesale distribution. The unit features two roll-up doors for efficient loading and unloading, along with clear-span, high-cube warehouse space designed to maximize vertical storage and operational efficiency.

A rare opportunity to secure a large-format warehouse in a central urban industrial location.

Property Summary

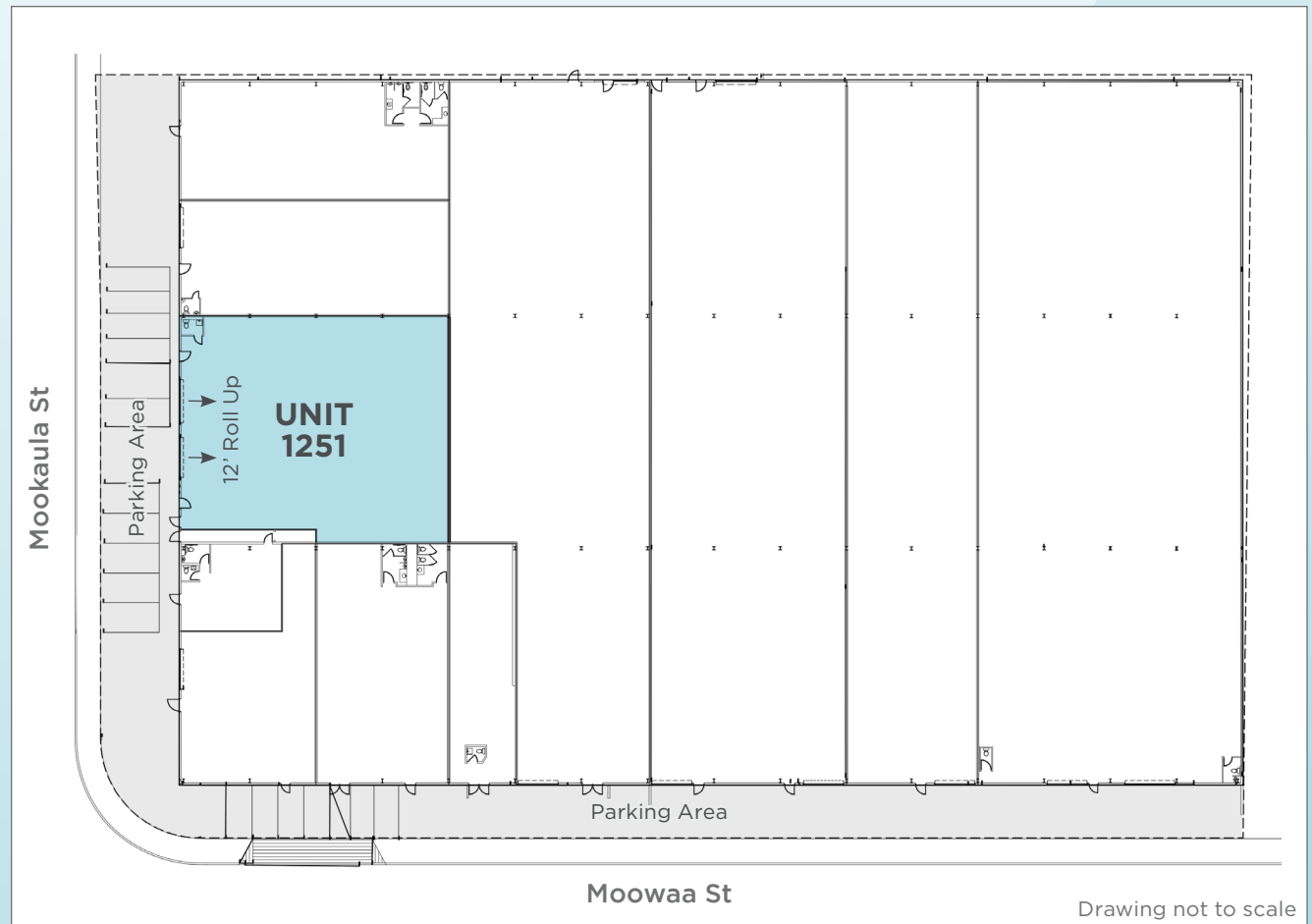
ADDRESS 845-855 Moowaa St
Honolulu, HI 96817

BASE RENT \$1.45 SF/MO

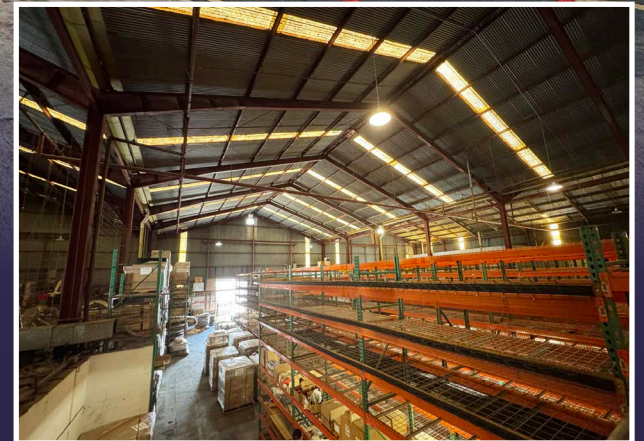
CAM \$0.65 SF/MO

SIZE 5,415 SF

ZONING IMX-1



Unit 1251
5,415 SF



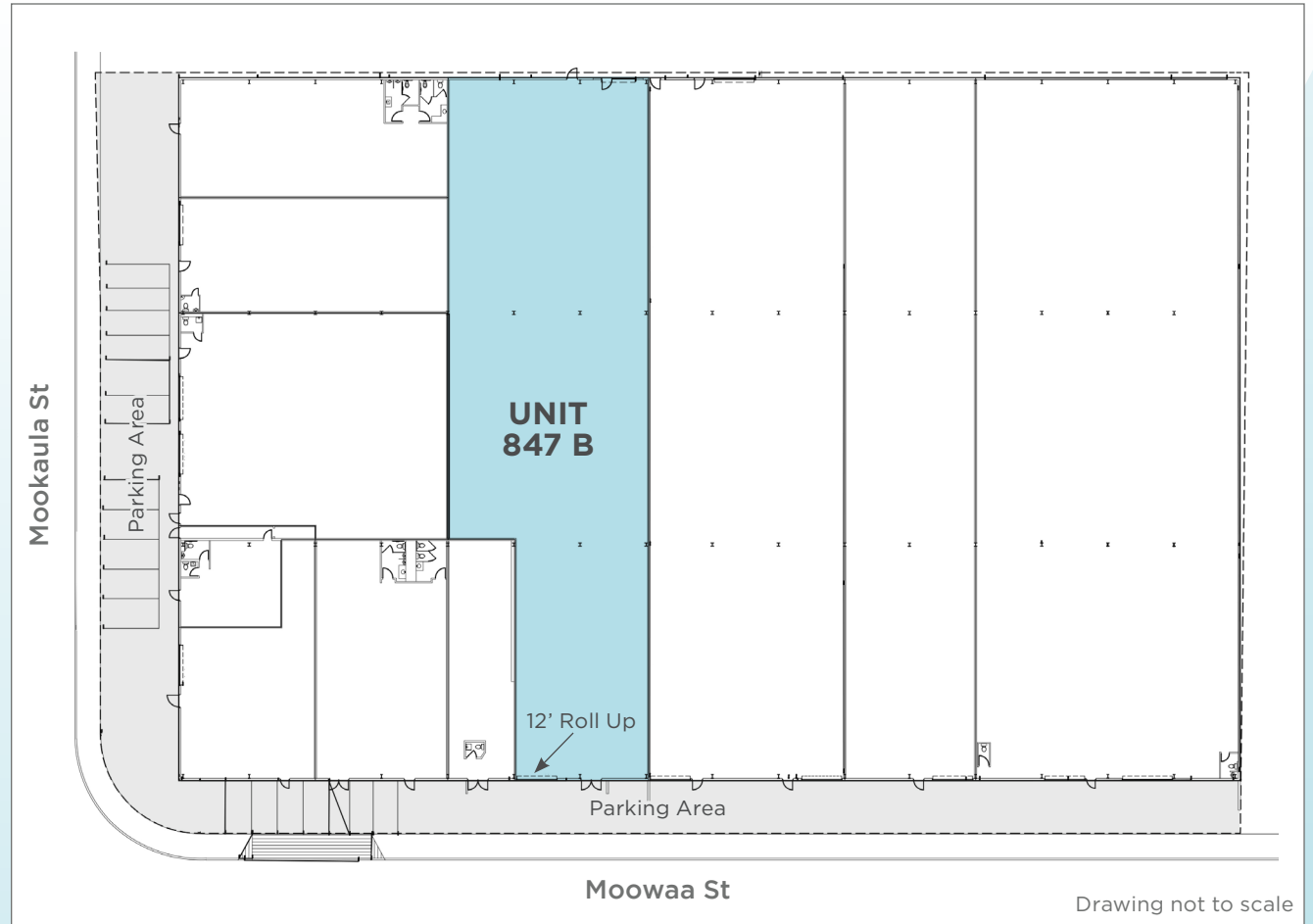
Unit 847 B

11,403 SF

Unit 847 B offers 11,403 square feet of functional warehouse space in Honolulu's central industrial core. Located off Moowaa Street and Mookaula Street, the property provides convenient access to major transportation routes including Nimitz Highway and the H-1 Freeway.

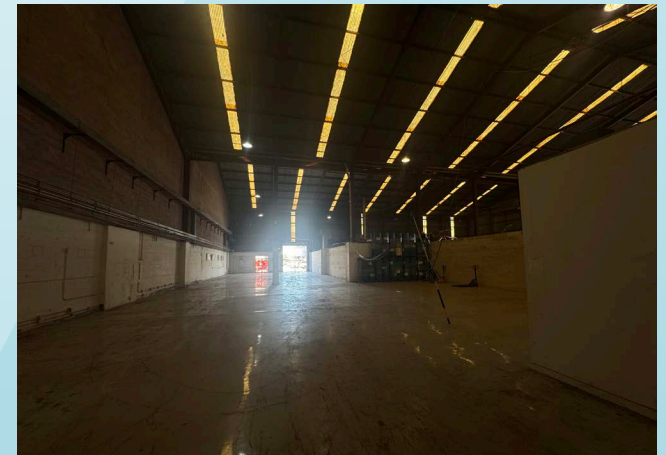
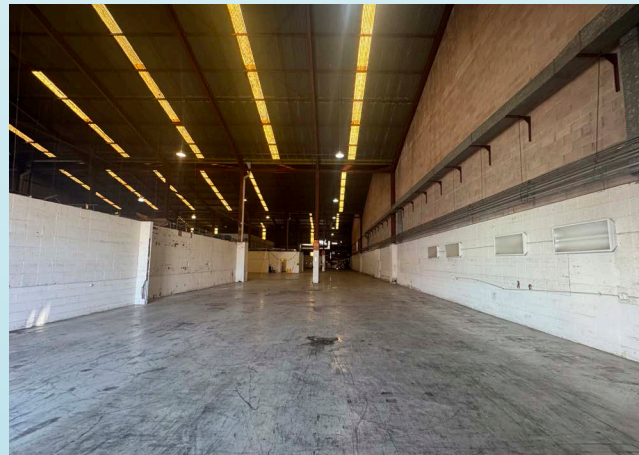
The unit features two roll-up doors positioned on opposite ends of the warehouse, allowing for efficient loading, unloading, and improved warehouse circulation. This dual-access configuration is ideal for distribution users, contractors, and businesses requiring streamlined operational flow.

Situated within an established IMX-1 zoned industrial complex, Unit 847 B presents an excellent opportunity for warehouse, storage, light manufacturing, or logistics users seeking a centrally located and highly functional space.



Property Summary

ADDRESS	845-855 Moowaa St Honolulu, HI 96817
BASE RENT	\$1.45 SF/MO
CAM	\$0.65 SF/MO
SIZE	11,403 SF
ZONING	IMX-1





Daniel K. Inouye International Airport

KALIHI-PALAMA

Future Rail Station

845-855 MOOWAA ST

KALIHI-KAI



Honolulu Harbor

SAND ISLAND

HONOLULU



CONTACT US FOR MORE INFORMATION

ANTHONY PROVENZANO (B), CCIM, SIOR
HI LIC RB-22101
+1 808 387 3444
aprovenzano@chaneybrooks.com

KELLY A. VEA (S), CCIM
HI LIC RS-79079
+1 808 489 2703
kvea@chaneybrooks.com

TREVOR BLAKE (S)
HI LIC RS-87251
+1 808 778 7409
tblake@chaneybrooks.com

1440 Kapiolani Blvd, Suite 1010
Honolulu, Hawaii 96814
Main +1 808 544 1600 | Fax +1 808 544 9574
www.chaneybrooks.com