



FOR LEASE

FRANKLIN MEDICAL CENTER

26206 W 12 MILE ROAD
 SOUTHFIELD, MI 48034



Immediate Occupancy



Office /
 Medical

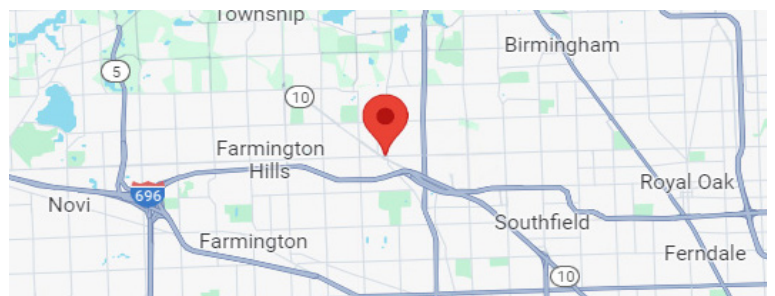


285 RSF - 3,356 RSF

eCODE: 999

PROPERTY HIGHLIGHTS

- Exceptional medical/professional campus in Southfield
- Suites available from 285 RSF to 3,356 RSF
- Great location with easy access via 12 Mile Road, I-696, Telegraph Road, and Northwestern Hwy
- Under New Management
- Building signage available
- Tenant improvements available
- Attractive lease rates
- ±8,750 SF floor plates
- Building improvements coming



ROBERT MOON

Vice President
 Brokerage Services
 E: Robert.Moon@freg.com
 P: 248.324.2000



STEVE EISENSHTADT

Senior Vice President
 Brokerage Services
 E: Steve.Eisenshtadt@freg.com
 P: 248.324.2000

FRANKLIN MEDICAL CENTER

PROPERTY AVAILABILITY



FRANKLIN MEDICAL CENTER - 26206 W 12 MILE RD, SOUTHFIELD, MI

| SPACE | SPACE USE | LEASE RATE | LEASE TYPE | SIZE (RSF) | TERM |
|-----------|-----------|--------------------------|----------------|------------|------------|
| Suite 100 | Medical | \$18.00 - \$24.00 RSF/yr | Modified Gross | 1,745 RSF | Negotiable |
| Suite 105 | Medical | \$18.00 - \$24.00 RSF/yr | Modified Gross | 3,005 RSF | Negotiable |
| Suite 108 | Medical | \$18.00 - \$24.00 RSF/yr | Modified Gross | 285 RSF | Negotiable |
| Suite 201 | Medical | \$18.00 - \$24.00 RSF/yr | Modified Gross | 2,859 RSF | Negotiable |
| Suite 204 | Medical | \$18.00 - \$24.00 RSF/yr | Modified Gross | 1,081 RSF | Negotiable |
| Suite 300 | Medical | \$18.00 - \$24.00 RSF/yr | Modified Gross | 3,356 RSF | Negotiable |
| Suite 302 | Medical | \$18.00 - \$24.00 RSF/yr | Modified Gross | 1,406 RSF | Negotiable |

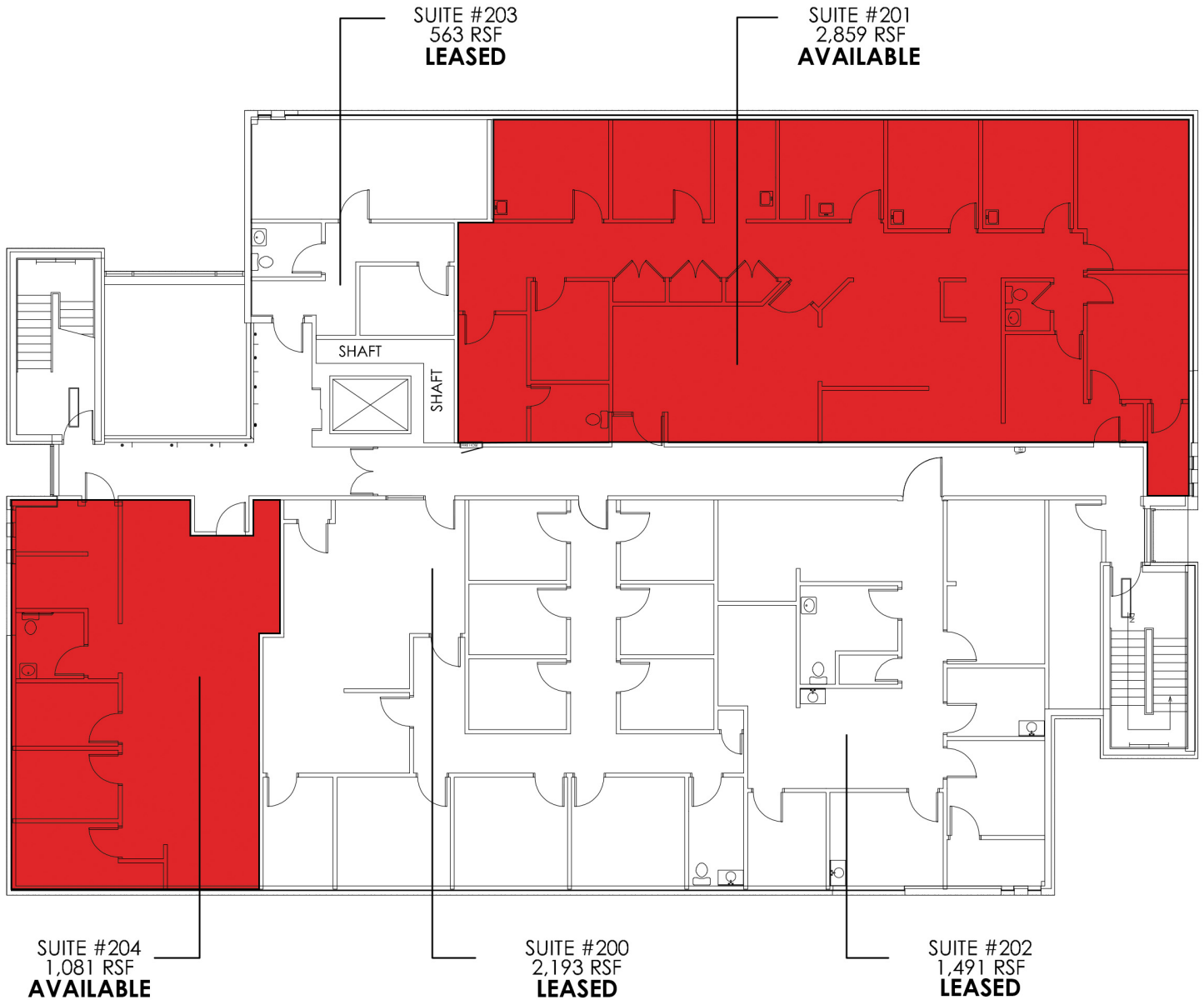
FRANKLIN MEDICAL CENTER 1ST FLOOR AVAILABILITY



FRANKLIN MEDICAL CENTER - 26206 W 12 MILE RD, SOUTHFIELD, MI

| SPACE | SPACE USE | LEASE RATE | LEASE TYPE | SIZE (RSF) | TERM |
|-----------|-----------|--------------------------|----------------|------------|------------|
| Suite 100 | Medical | \$18.00 - \$24.00 RSF/yr | Modified Gross | 1,745 RSF | Negotiable |
| Suite 105 | Medical | \$18.00 - \$24.00 RSF/yr | Modified Gross | 3,005 RSF | Negotiable |
| Suite 108 | Medical | \$18.00 - \$24.00 RSF/yr | Modified Gross | 285 RSF | Negotiable |

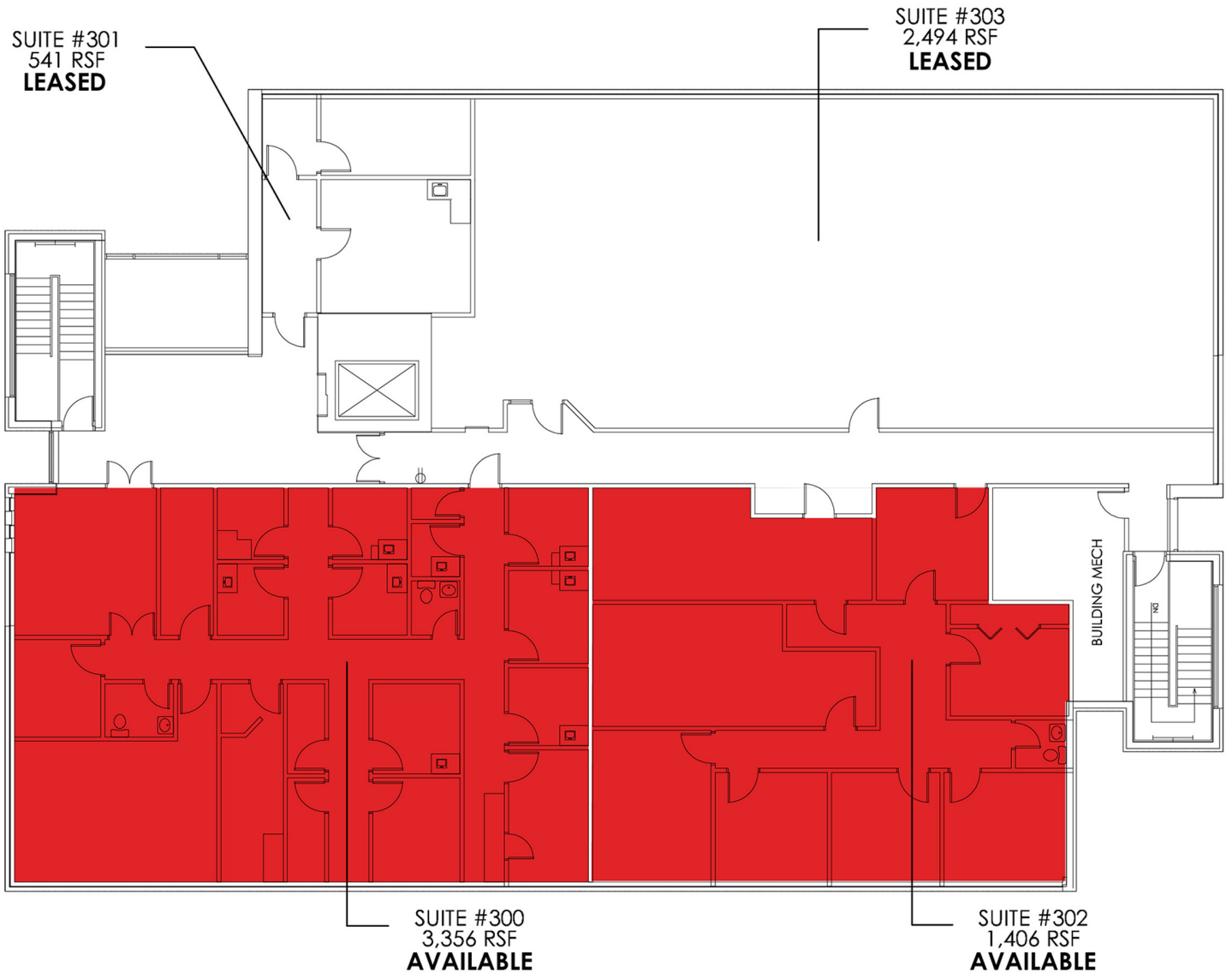
FRANKLIN MEDICAL CENTER 2ND FLOOR AVAILABILITY



FRANKLIN MEDICAL CENTER - 26206 W 12 MILE RD, SOUTHFIELD, MI

| SPACE | SPACE USE | LEASE RATE | LEASE TYPE | SIZE (RSF) | TERM |
|-----------|-----------|--------------------------|----------------|------------|------------|
| Suite 201 | Medical | \$18.00 - \$24.00 RSF/yr | Modified Gross | 2,859 RSF | Negotiable |
| Suite 204 | Medical | \$18.00 - \$24.00 RSF/yr | Modified Gross | 1,081 RSF | Negotiable |

FRANKLIN MEDICAL CENTER 3RD FLOOR AVAILABILITY



FRANKLIN MEDICAL CENTER - 26206 W 12 MILE RD, SOUTHFIELD, MI

| SPACE | SPACE USE | LEASE RATE | LEASE TYPE | SIZE (RSF) | TERM |
|-----------|-----------|--------------------------|----------------|------------|------------|
| Suite 300 | Medical | \$18.00 - \$24.00 RSF/yr | Modified Gross | 3,356 RSF | Negotiable |
| Suite 302 | Medical | \$18.00 - \$24.00 RSF/yr | Modified Gross | 1,406 RSF | Negotiable |