



LEASED

110,978 SF

Ideal For:

- High Bay WH/Distribution
- Last Mile Delivery
- Corporate HQ

FOR LEASE

4 Bell Drive

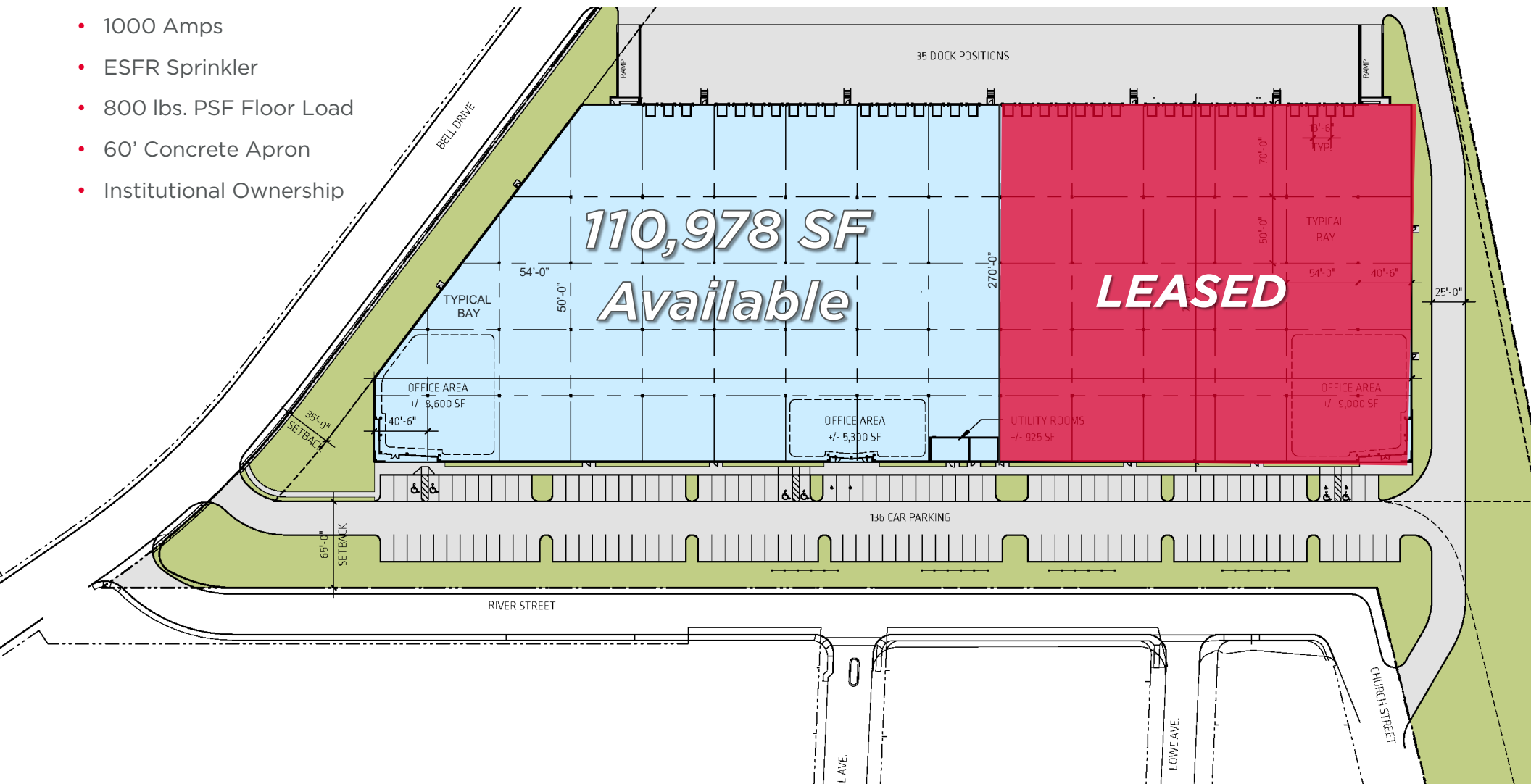
Metro Point Logistics Center
Ridgefield, NJ



PROPERTY FEATURES

- 110,978 SF Available
- 36' Clear Ceilings
- 17 Tailgates (9'x10') with 40,000 lb. levelers
- 1 Drive-in Door (12'x14')
- 50' x 54' (Typical) Column Spacing
- 81 Auto Spaces
- 1000 Amps
- ESFR Sprinkler
- 800 lbs. PSF Floor Load
- 60' Concrete Apron
- Institutional Ownership

110,978 SF AVAILABLE



CORPORATE NEIGHBORS



4 BELL DRIVE

4 Bell Drive is part of a Class-A warehouse and distribution development located minutes from Route 46, Route 80, and the New Jersey Turnpike.

The site is ideal for same-day delivery to major Northeast and Mid-Atlantic markets.

CEVA

Biazzo Dairy Products

Ridgefield Power Substation

Sanofi

Toufayan Bakeries

Contrail Auto Terminal

Western Carriers

NRS

Dynamic Worldwide

Triangle Distribution

STG Logistics

New World Creation Inc.

Grow Company Inc.

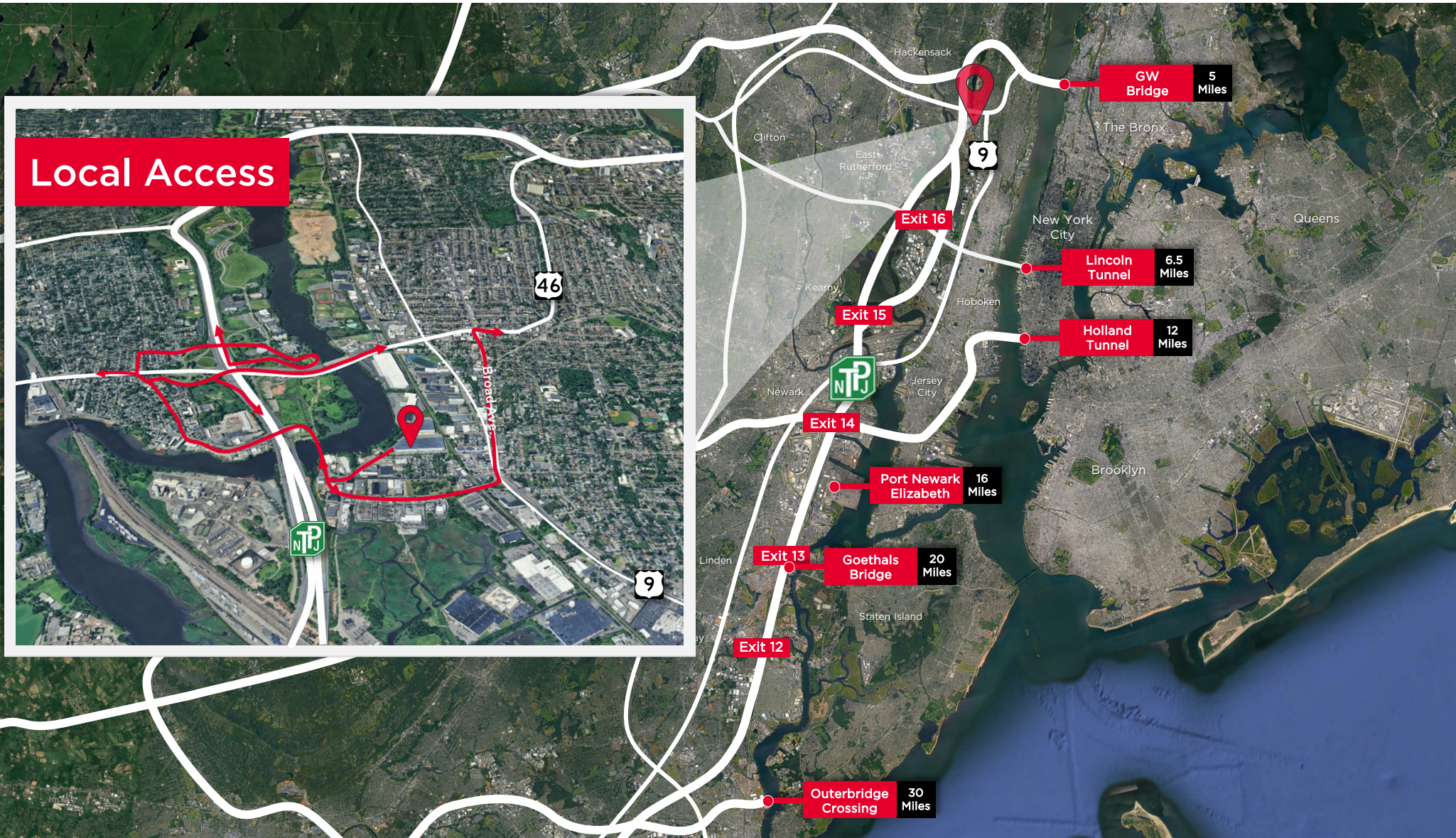
TekniPlex

JB Hunt

BRAM Automotive

IDEAL LOCATION

LOCATION



Stephen Elman
Executive Managing Director
+1 201 460 3363
steve.elman@cushwake.com

Eric Schlett
Director
+ 551 804 4747
eric.schlett@cushwake.com

©2025 Cushman & Wakefield. All rights reserved. The material in this presentation has been prepared solely for information purposes, and is strictly confidential. Any disclosure, use, copying or circulation of this presentation (or the information contained within it) is strictly prohibited, unless you have obtained Cushman & Wakefield's prior written consent. The views expressed in this presentation are the views of the author and do not necessarily reflect the views of Cushman & Wakefield. Neither this presentation nor any part of it shall form the basis of, or be relied upon in connection with any offer, or act as an inducement to enter into any contract or commitment whatsoever. NO REPRESENTATION OR WARRANTY IS GIVEN, EXPRESS OR IMPLIED, AS TO THE ACCURACY OF THE INFORMATION CONTAINED WITHIN THIS PRESENTATION, AND CUSHMAN & WAKEFIELD IS UNDER NO OBLIGATION TO SUBSEQUENTLY CORRECT IT IN THE EVENT OF ERRORS.