

# Newly Renovated Office at The Towers Emeryville

savills

FOR SUBLEASE

2200 Powell St, Suites 100 & 120, Emeryville, CA 94608



## SPACE PROFILE

9,213 SF

Total SF (Divisible: 6,744 & 2,469 SF)

Thru 2030

Term

30 Unreserved

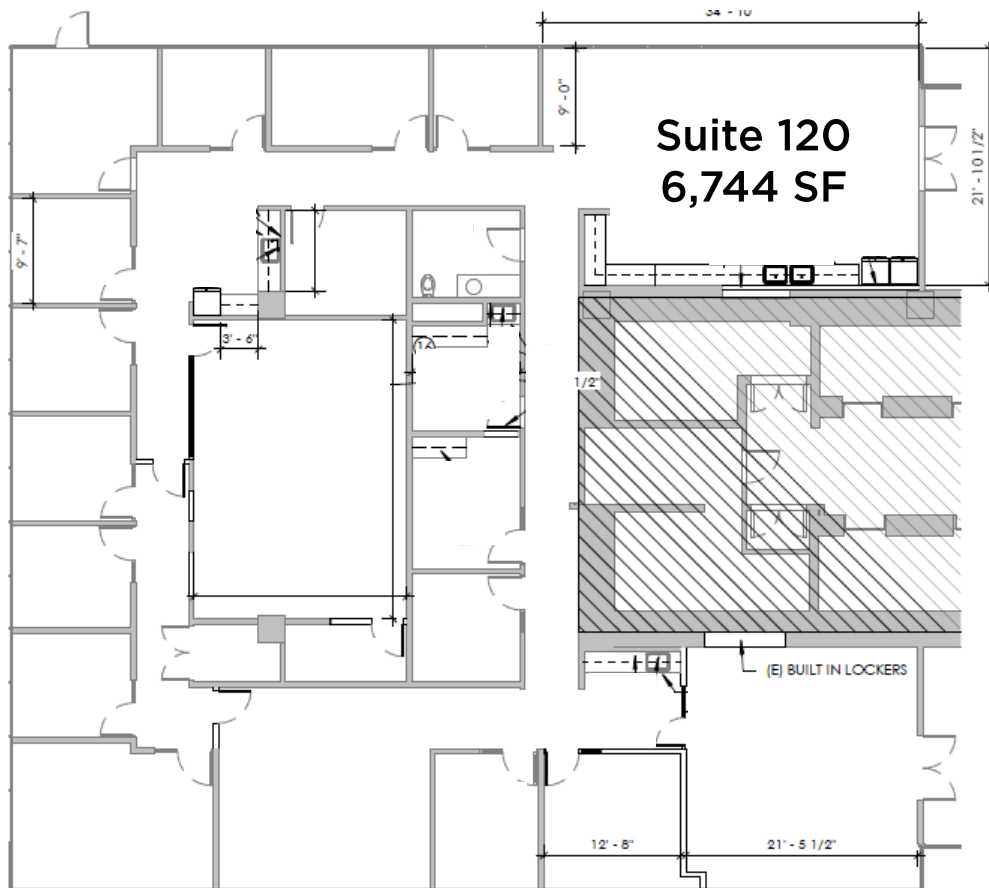
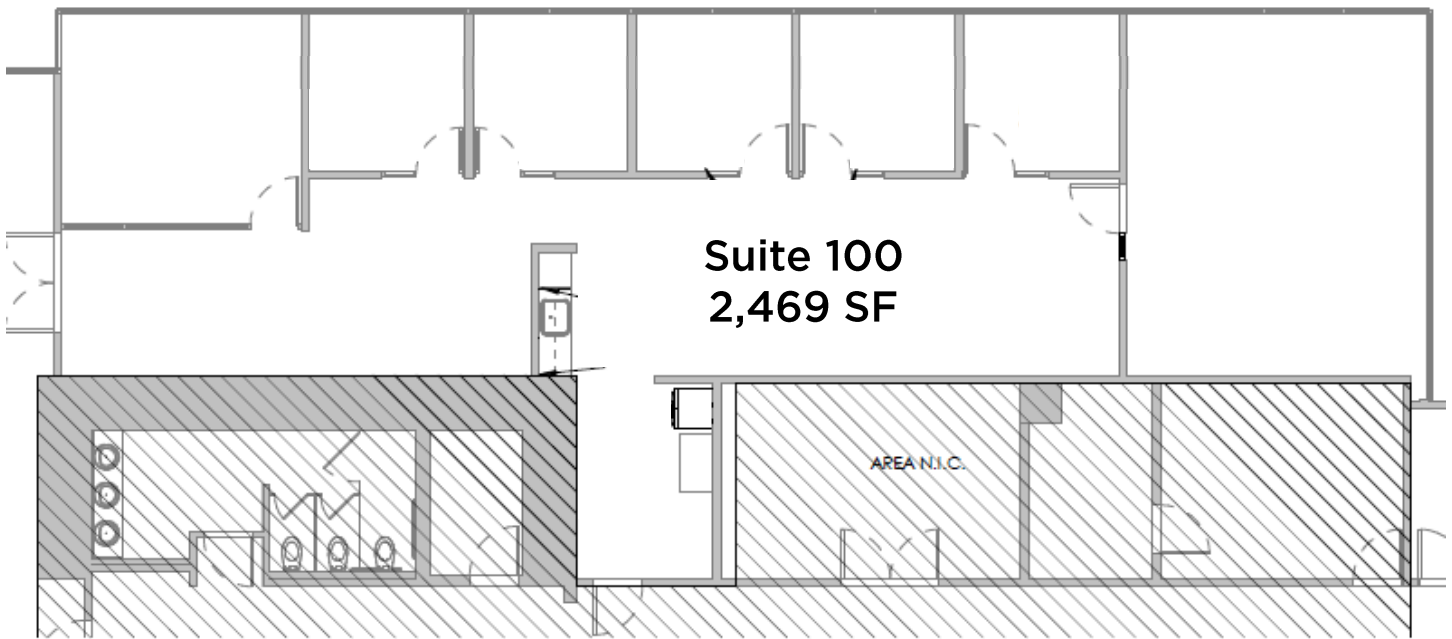
Parking Stalls

Call To Verify

Rental rate

Immediate

Availability



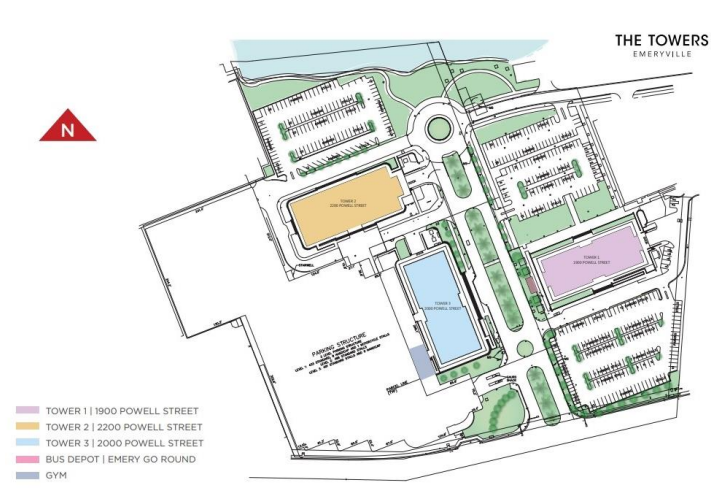
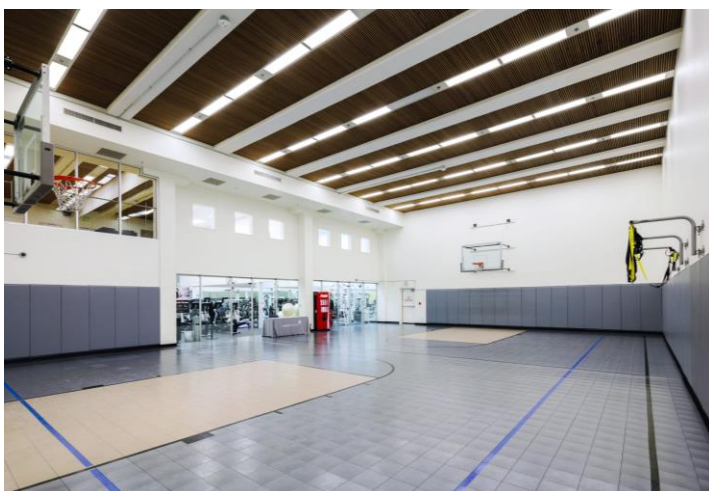
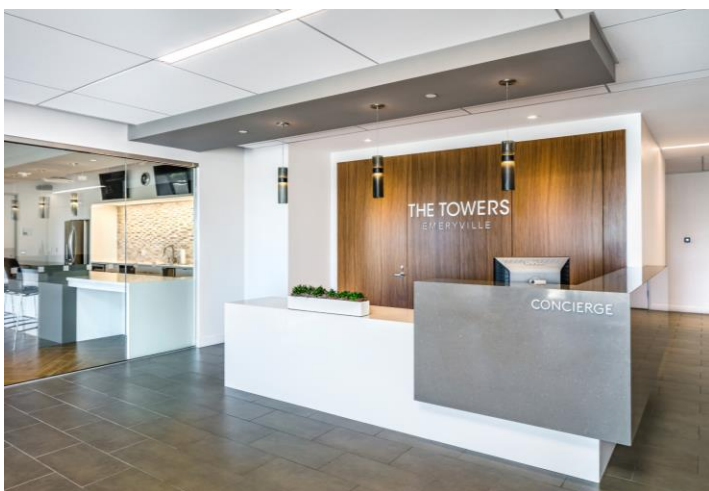
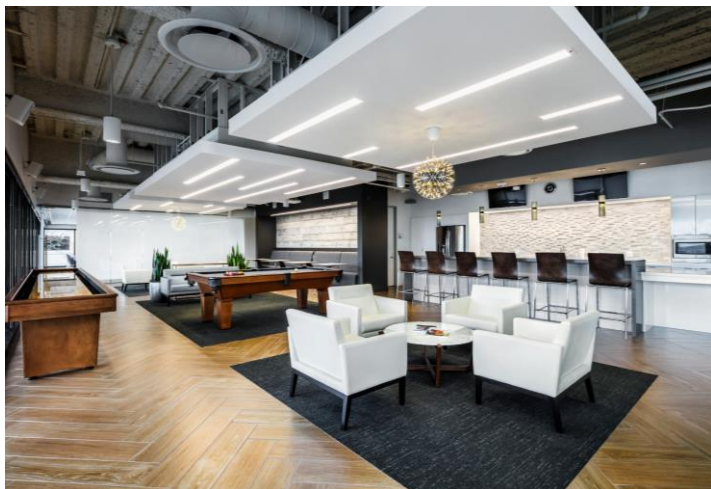
#### PROPERTY OVERVIEW

- Prestigious three-building waterfront campus with dramatic views of the San Francisco skyline, Bay Bridge, and Golden Gate Bridge.

#### KEY HIGHLIGHTS

- Recently renovated
- Divisible to 6,744 in Suite 120 and 2,469 in Suite 100.
- Provide at least 48-hour notice to tour





## Chris Armato

+1 949 706 6913  
carmato@savills.us  
License #01726106

## Lindsay Gazzano

+1 949 706 6651  
lgazzano@savills.us  
License #01824445

## McKenna Morgan

+1 949 706 6652  
mcmorgan@savills.us  
License #02165339



The information contained in this communication has been obtained from a variety of sources believed to be reliable but has not been verified. NO WARRANTY OR REPRESENTATION, EXPRESS OR IMPLIED, IS MADE AS TO THE CONDITION OF THE PROPERTY OR ACCURACY OR COMPLETENESS OF THE INFORMATION CONTAINED HEREIN AND SAME IS SUBMITTED SUBJECT TO ERRORS, OMISSIONS, CHANGE OF PRICE, RENTAL OR OTHER CONDITIONS, WITHDRAWAL WITHOUT NOTICE AND TO ANY SPECIFIC CONDITIONS IMPOSED BY THE PROPERTY OWNER OR LESSOR.