

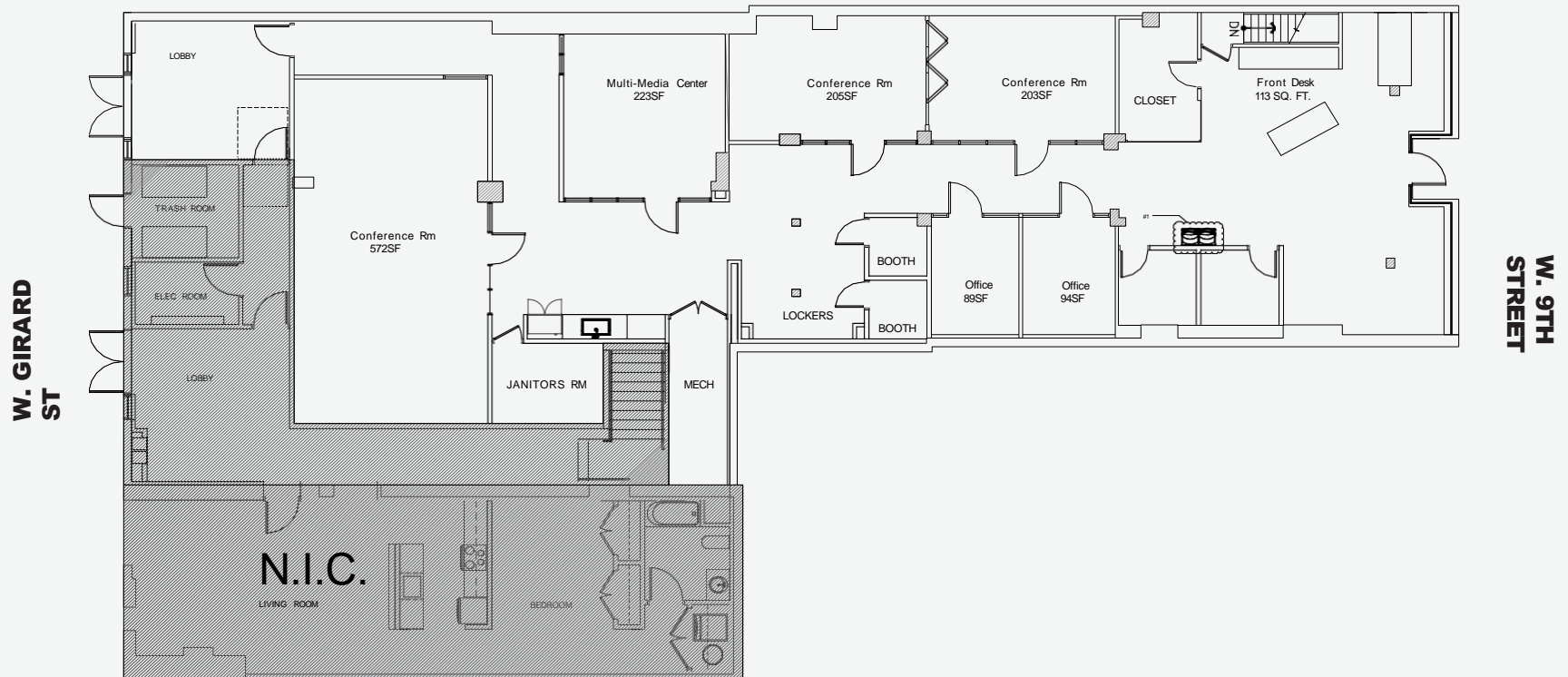
212 W. 9th Street

Wilmington, Delaware

3,950 SF Available

Newly fit-out office space with retail exposure

Availabilities



GROUND FLOOR PLAN



BUILDING IMAGES



RENOVATED

Newly fit-out modern space with high-end finishes throughout



VISIBLE

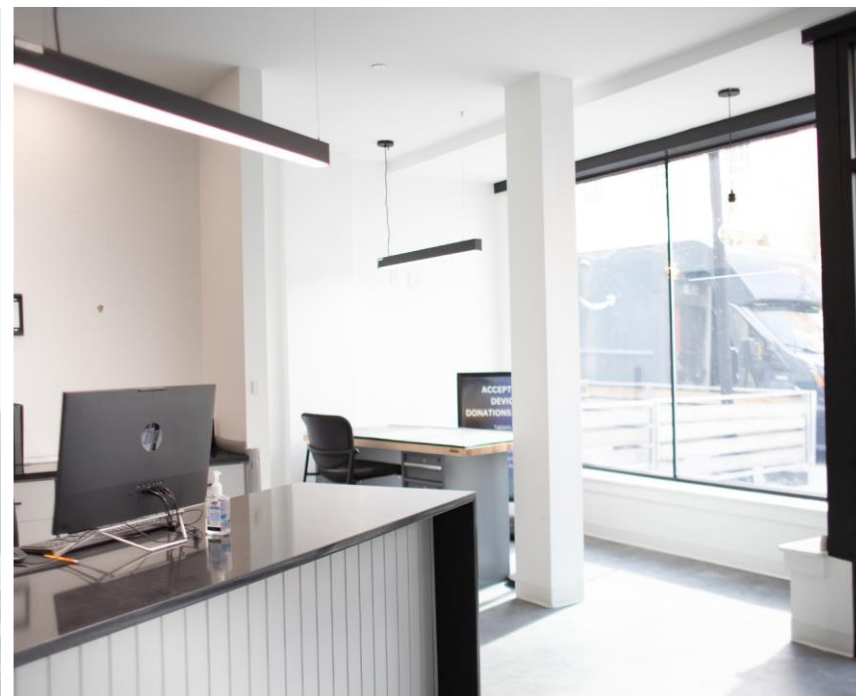
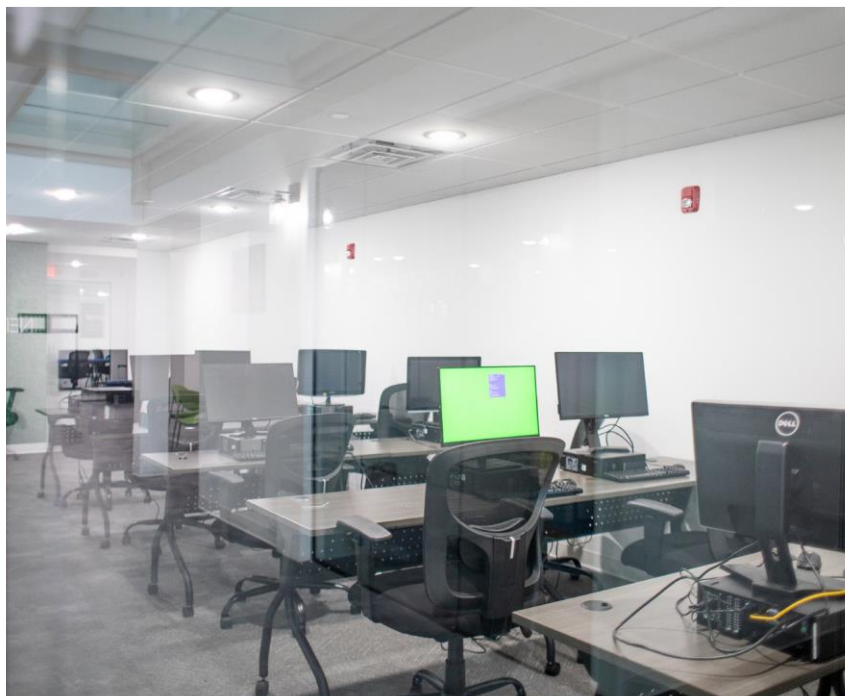
Highly visible location along Wilmington's vibrant 9th Street corridor



FURNISHED

Fully furnished space, available for immediate move-in





Amenities





Prime Wilmington Location



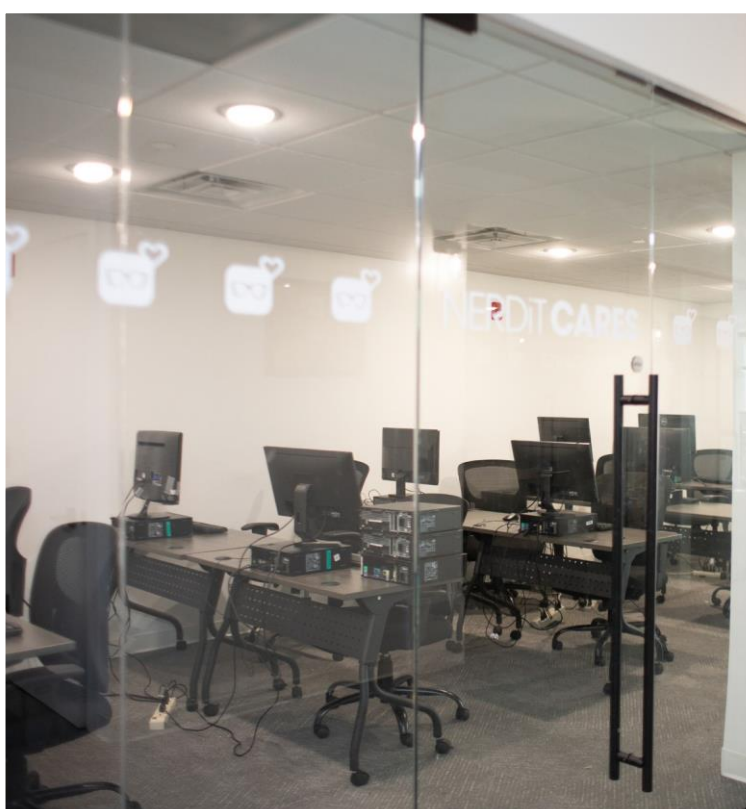
0.6 MILE
to SEPTA
Wilmington Station



6 MILES
to New
Castle Airport



20 MILES
to Philadelphia
International Airport





About the owner

9th Street Development Company (9SDC) is a team of creative, driven developers focused on unifying and elevating the communities of Wilmington and Northern DE. They focus on the ever-changing wants and needs of their community members to ensure everyone is empowered within their homes. 9SDC specializes in multi-family, mixed-use, historic renovations, and ground up construction. Their unique development strategy supports and encourages new businesses and entrepreneurship, rather than leaving vacant storefronts.



For leasing information, contact

Blaise Fletcher
+1 302 356 2861
blaise.fletcher@jll.com

Jamie Vari
+1 302 356 2862
jamie.vari@jll.com

Jones Lang LaSalle Brokerage, Inc.
1011 Centre Road, Suite 117
Wilmington, DE 19805
+1 302 356 2858

Although information has been obtained from sources deemed reliable, JLL does not make any guarantees, warranties or representations, express or implied, as to the completeness or accuracy as to the information contained herein. Any projections, opinions, assumptions or estimates used are for example only. There may be differences between projected and actual results, and those differences may be material. JLL does not accept any liability for any loss or damage suffered by any party resulting from reliance on this information. If the recipient of this information has signed a confidentiality agreement with JLL regarding this matter, this information is subject to the terms of that agreement. ©2025 Jones Lang LaSalle Brokerage, Inc. All rights reserved.