

# 6680 CHIPPEWA STREET

ST. LOUIS, MO 63109



## Contact Information

**Jon Keating**  
(314) 781-1572  
jkeating@cozadgroup.com

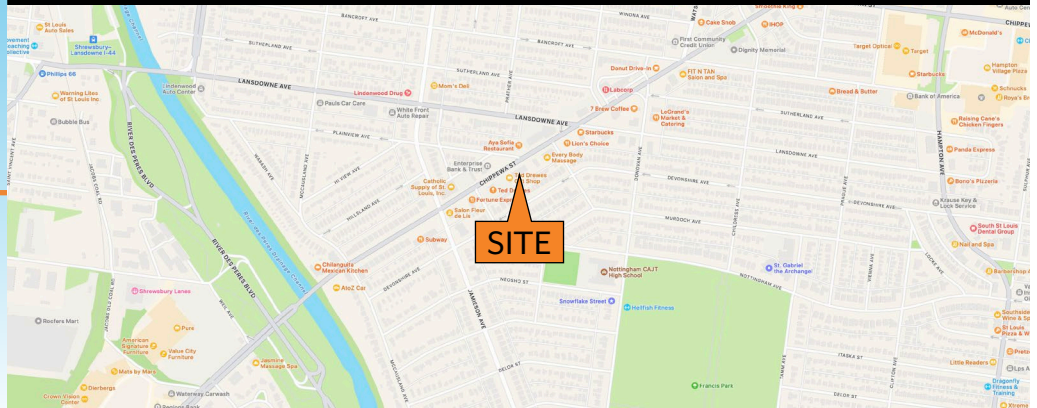
**G.T. Cozad, III**  
(314) 646-3303  
gt3@cozadgroup.com

## PROPERTY HIGHLIGHTS

- ▶ Office space available
  - Suite 1: 2,392 RSF
  - Suite 2: 635 RSF
- ▶ Ideal space for medical or professional office use
- ▶ Abundant parking available
- ▶ Great location with easy access to I-44
- ▶ Lease Rate: \$22.95/sf FS

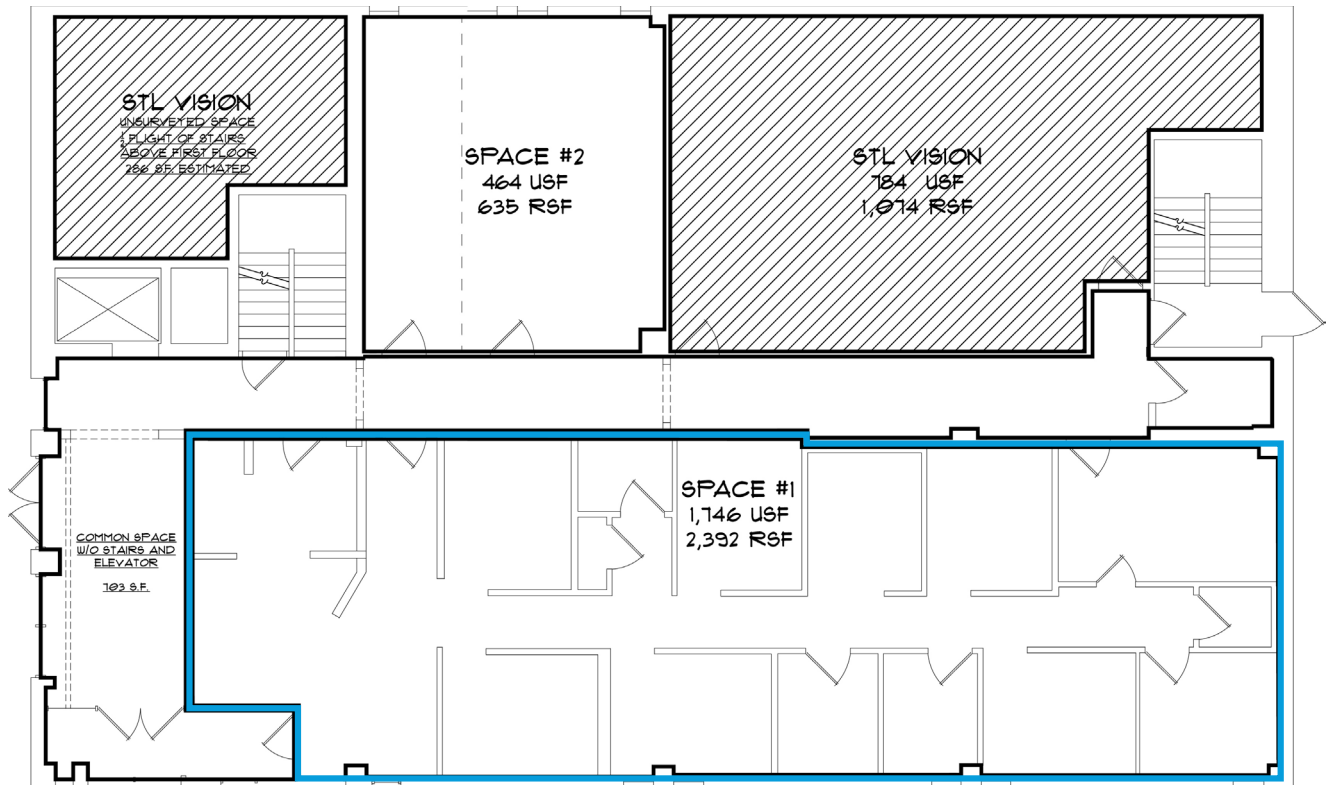


**Cozad Commercial Real Estate**  
**MD Real Estate Advisors, LLC**  
16 Sunnen Drive, Ste. 164  
St. Louis, Missouri 63143



# 6680 CHIPPEWA STREET

ST. LOUIS, MO 63109



Information herein has been obtained from the owner of the property or from other sources. The brokers do not guarantee the accuracy of this information. Sellers and brokers make no representation as to the environmental or other conditions of the property and that purchaser investigate fully.

**COZAD COMMERCIAL REAL ESTATE**  
**MD REAL ESTATE ADVISORS**  
A subsidiary of Cozad Commercial Real Estate, Ltd.  
16 Sunnen Dr., Ste. 164 • St. Louis, MO 63143