



## Located in the heart of The Village of Grosse Pointe

### PROPERTY SNAPSHOT

- 76,148 square foot building with just one suite remaining
  - Suite 225 offers 2,115 sf
- Frontage on Kercheval Avenue
- Easily accessible parking
- Built in 1954; renovated in 2006
- Close proximity to several restaurants, shops and grocery stores

© 2024 Avison Young Michigan - LLC. All rights reserved. E. & O.E.: The information contained herein was obtained from sources which we deem reliable and, while thought to be correct, is not guaranteed by Avison Young.

### Get more information

**Matthew Buslepp**

Vice President

+1 313 209 4123

[matt.buslepp@avisonyoung.com](mailto:matt.buslepp@avisonyoung.com)

**Bob Danforth**

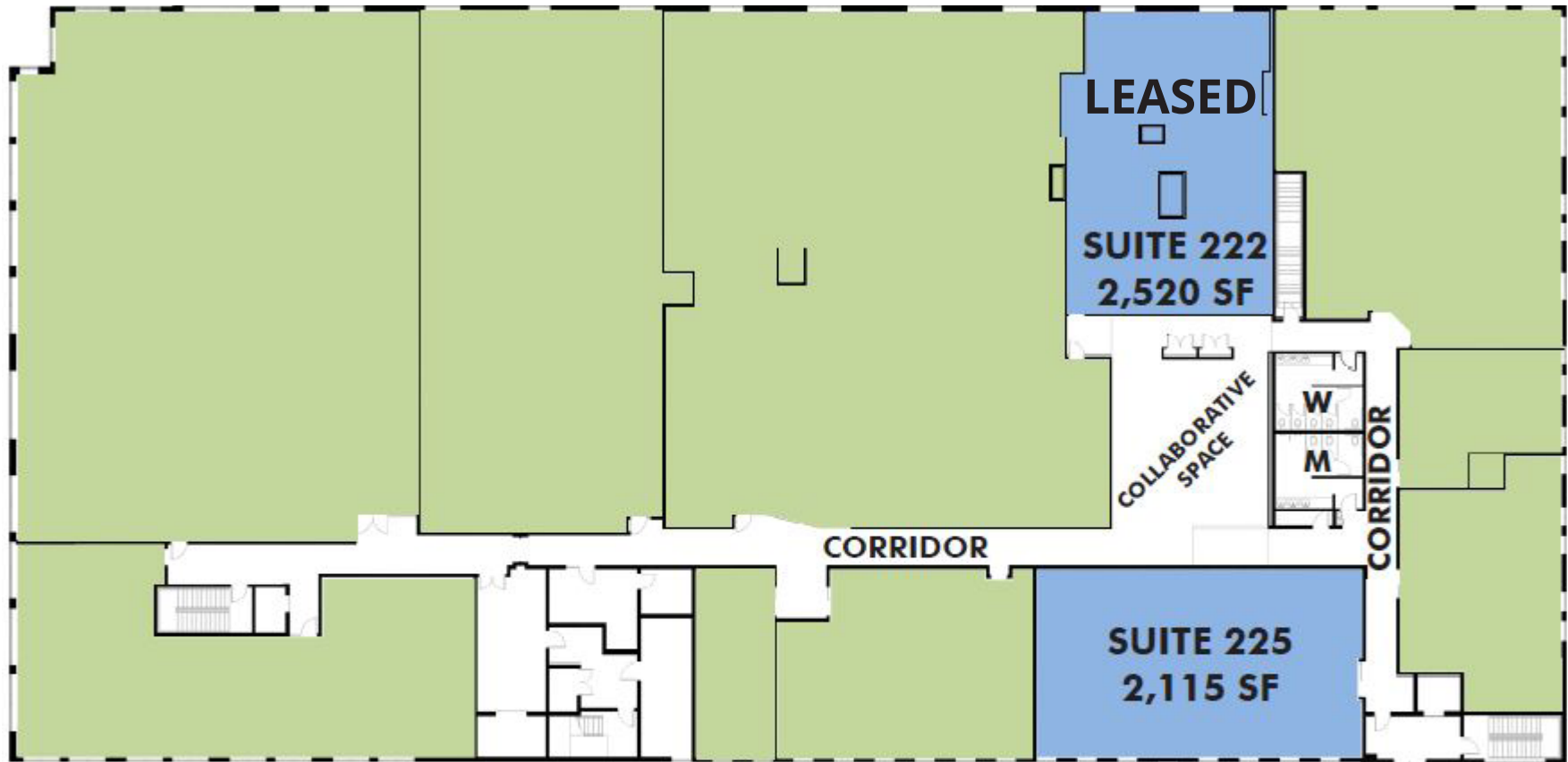
Associate

+1 313 622 0159

[robert.danforth@avisonyoung.com](mailto:robert.danforth@avisonyoung.com)

[avisonyoung.com](http://avisonyoung.com)

# Floor Plan



- VACANT SUITE
- OCCUPIED SUITE
- AMENITY/SERVICE AREAS