

1048 PEARL STREET

BOULDER, COLORADO 80302



2,929 SF
AVAILABLE

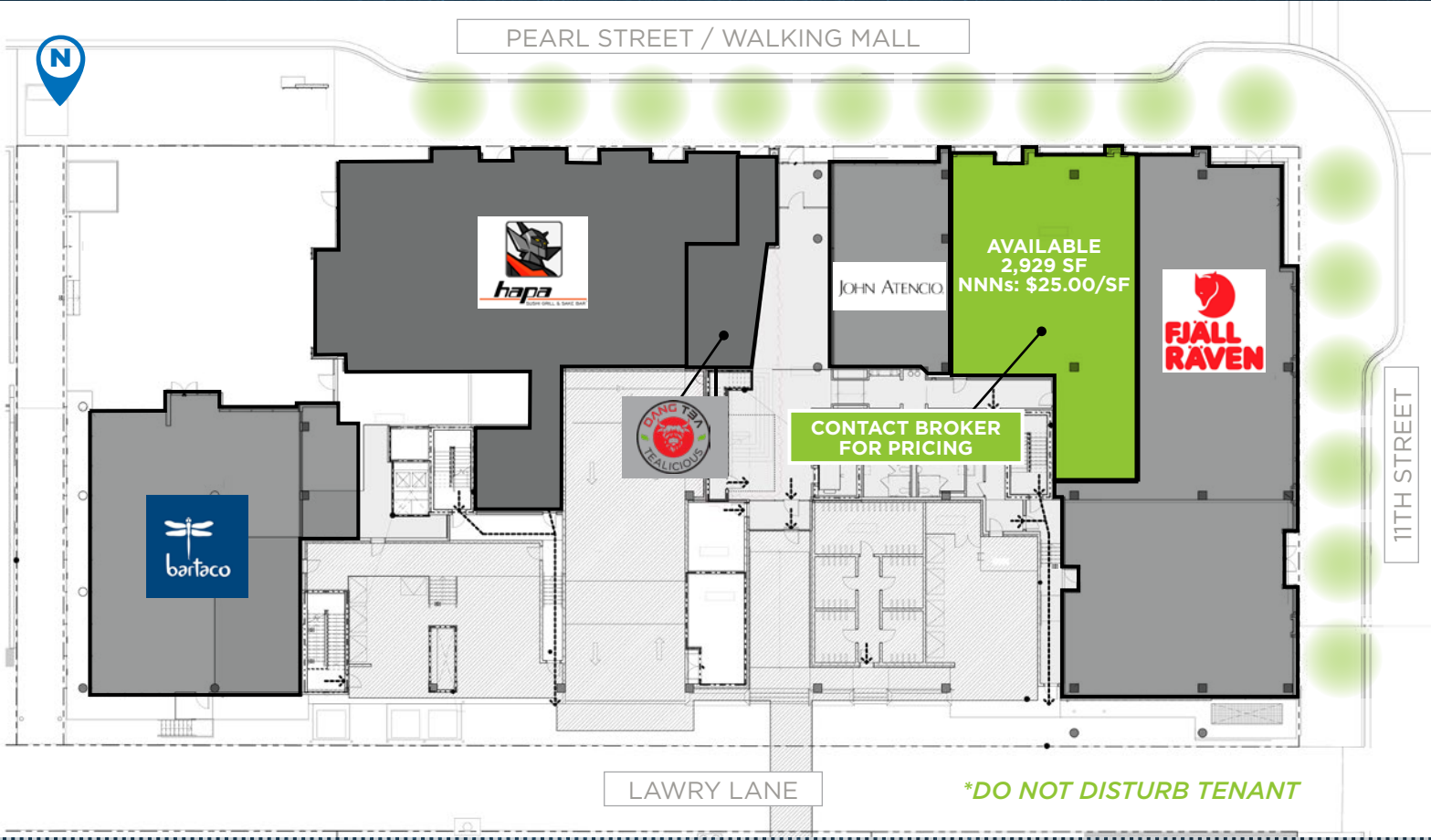
RETAIL SPACE FOR LEASE

IMPRESSIVE GROUND FLOOR CLASS A RETAIL SPACE AND CREATIVE LOWER LEVEL RETAIL SPACE WITH 21 FOOT CEILING HEIGHTS AVAILABLE FOR LEASE. LOCATED ON THE WEST END OF THE HISTORIC PEDESTRIAN PEARL STREET MALL IN DOWNTOWN BOULDER, THIS PROPERTY FEATURES GREAT VISIBILITY AND AN ABUNDANCE OF OFFICE, PEDESTRIAN AND STUDENT FOOT TRAFFIC.

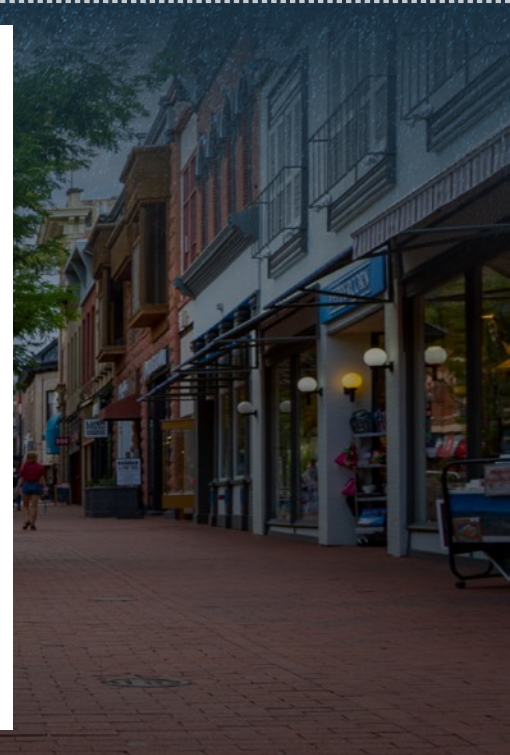
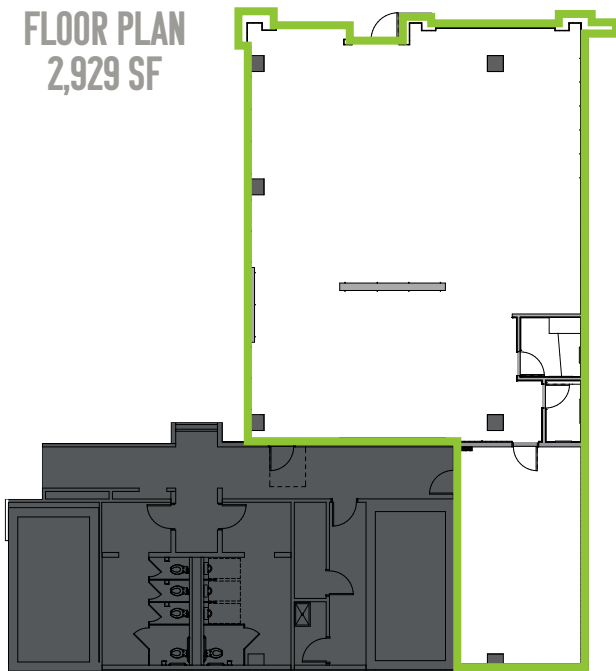


1048 PEARL STREET

BOULDER, COLORADO 80302



FLOOR PLAN
2,929 SF



1048 PEARL STREET

BOULDER, COLORADO 80302



1048 PEARL STREET LOWER LEVEL

AVAILABLE SIZE

12,864 SF*
*UP TO 18,000 SF WITH
OPTIONAL MEZZANINE

RATE

CALL BROKER
FOR PRICING

NNNs

\$25.00 PSF

SPACE TYPE

EXPERIENTIAL,
CREATIVE RETAIL

LOWER LEVEL RENDERING



1048 PEARL STREET

BOULDER, COLORADO 80302

1048
PEARL STREET



FOR MORE INFORMATION, PLEASE CONTACT

TYLER BRAY
Director

+1 303 312 4304
tyler.bray@cushwake.com

JAMES ARNOLD

Senior Associate
+1 720 354 2059
james.arnold@cushwake.com



1401 Lawrence Street, Suite 1100 / Denver, Colorado 80202 / T +1 303 292 3700 / F +1 303 534 8270 / cushmanwakefield.com

©2024 Cushman & Wakefield. All rights reserved. The information contained in this communication is strictly confidential. This information has been obtained from sources believed to be reliable but has not been verified. NO WARRANTY OR REPRESENTATION, EXPRESS OR IMPLIED, IS MADE AS TO THE CONDITION OF THE PROPERTY (OR PROPERTIES) REFERENCED HEREIN OR AS TO THE ACCURACY OR COMPLETENESS OF THE INFORMATION CONTAINED HEREIN, AND SAME IS SUBMITTED SUBJECT TO ERRORS, OMISSIONS, CHANGE OF PRICE, RENTAL OR OTHER CONDITIONS, WITHDRAWAL WITHOUT NOTICE, AND TO ANY SPECIAL LISTING CONDITIONS IMPOSED BY THE PROPERTY OWNER(S). ANY PROJECTIONS, OPINIONS OR ESTIMATES ARE SUBJECT TO UNCERTAINTY AND DO NOT SIGNIFY CURRENT OR FUTURE PROPERTY PERFORMANCE.