



OFFICES AT  
**StonePoint**

# A Workplace that Inspires Well-being



Jones Lang LaSalle Brokerage, Inc.  
Real Estate License #: 01856260

**One Adventist Health Way, Roseville**

**14,880 – 92,676 RSF Available**

**Class A Plug-and-Play Office For Lease**









WELL Platinum  
Certification



LEED  
Certification



# Find Space for Everything



Plug-N-Play  
Office Space



1-Mile Outdoor  
Walking Path



Extensive On-Site  
Security Systems



Grab n Go Café



Fully Furnished with  
High-End Furniture  
and Tech



Easy Access to I-80  
and Highway-65



Outdoor Patio Seating



Energy-Efficient Power  
and HVAC Systems



Showers and Lockers



Parking Ratio 4.0/1,000 SF



EV Charging Stations



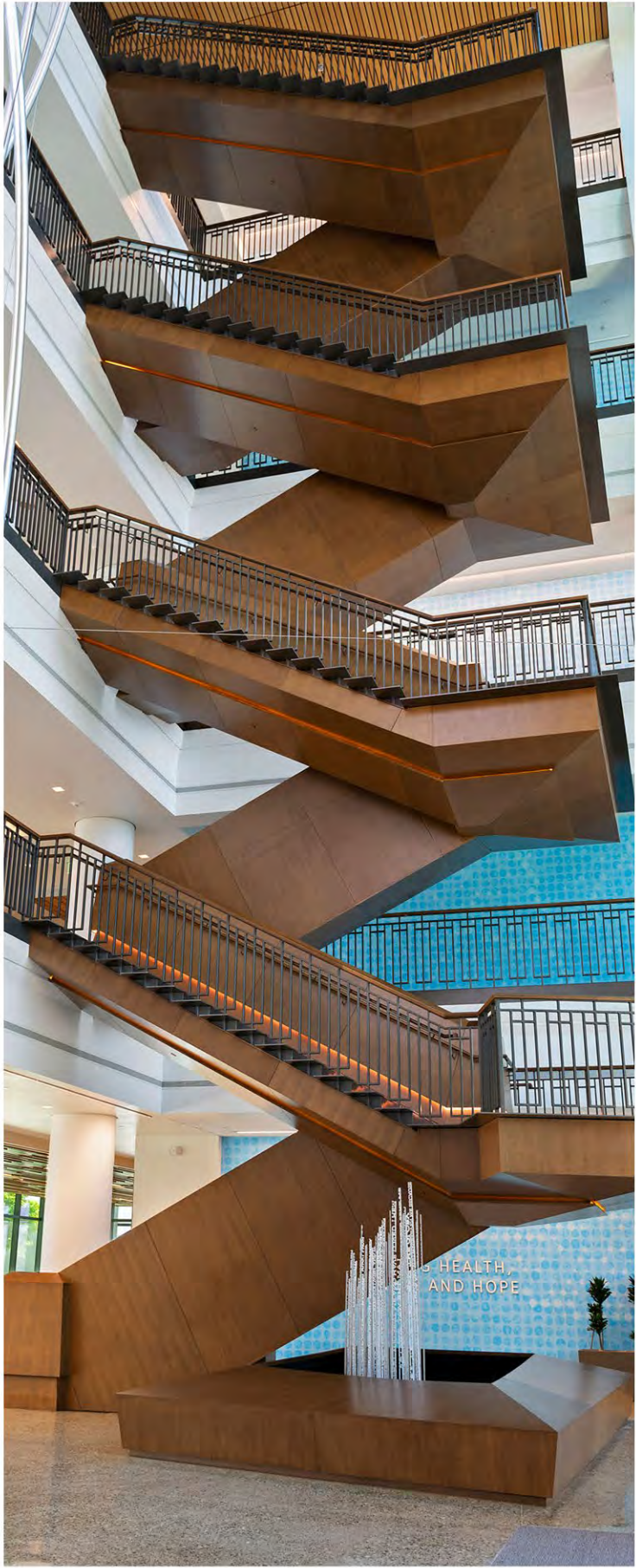
High Tech Conference  
Facilities for 6-200 People







BUILDING AMENITIES









# High Quality Suites Available

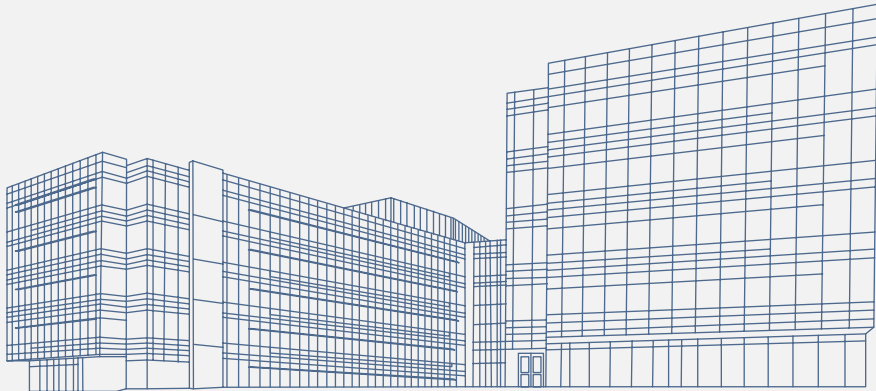


Suite 350

Suite 200

Suite 150

A private suite,  
a full floor,  
or multiple floors,  
The Offices at  
Stone Point has  
the space for you



Suite 150 ±14,880 RSF

Suite 200 ±58,747 RSF

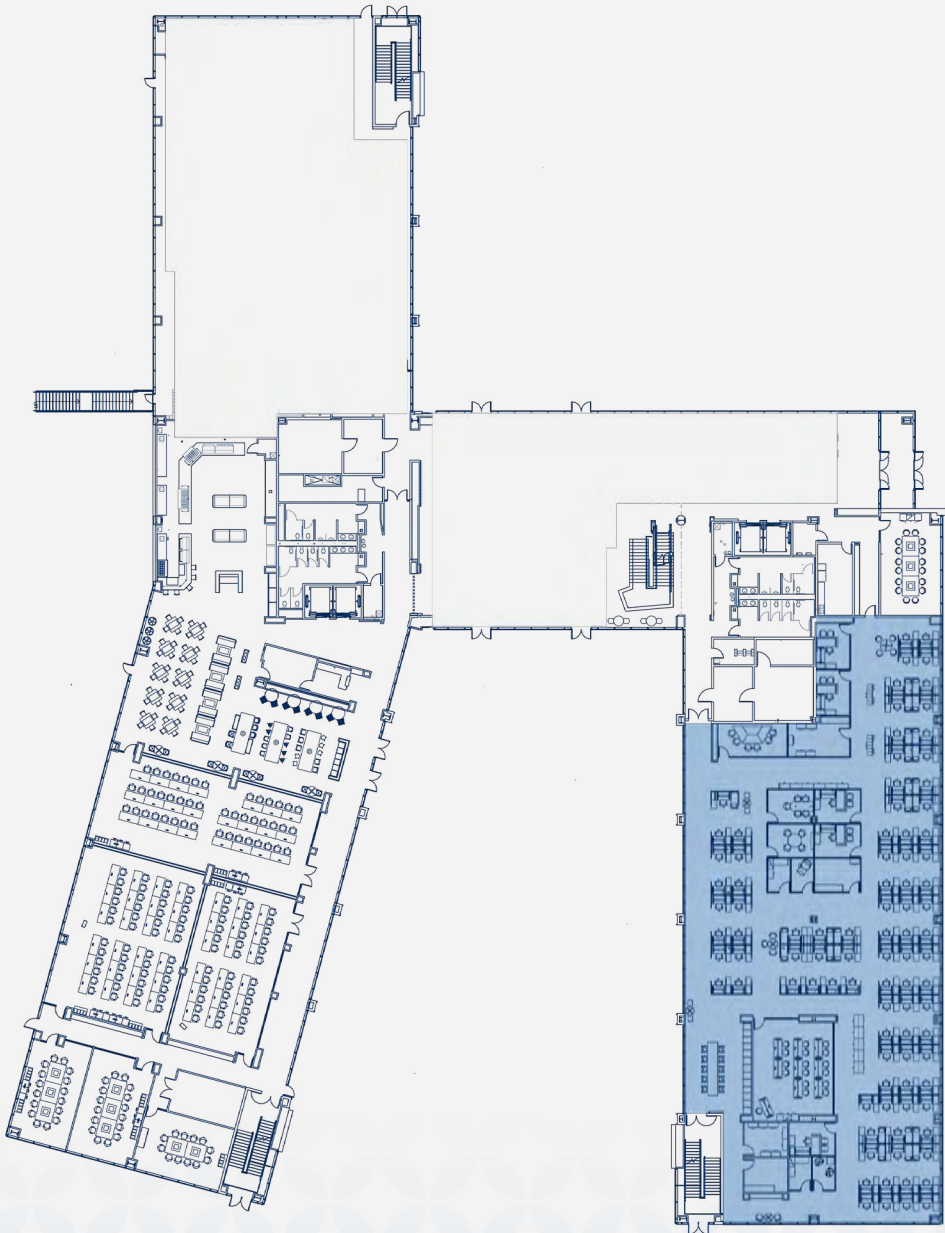
Suite 350 ±19,049 RSF

Total SF Available ±92,676 RSF



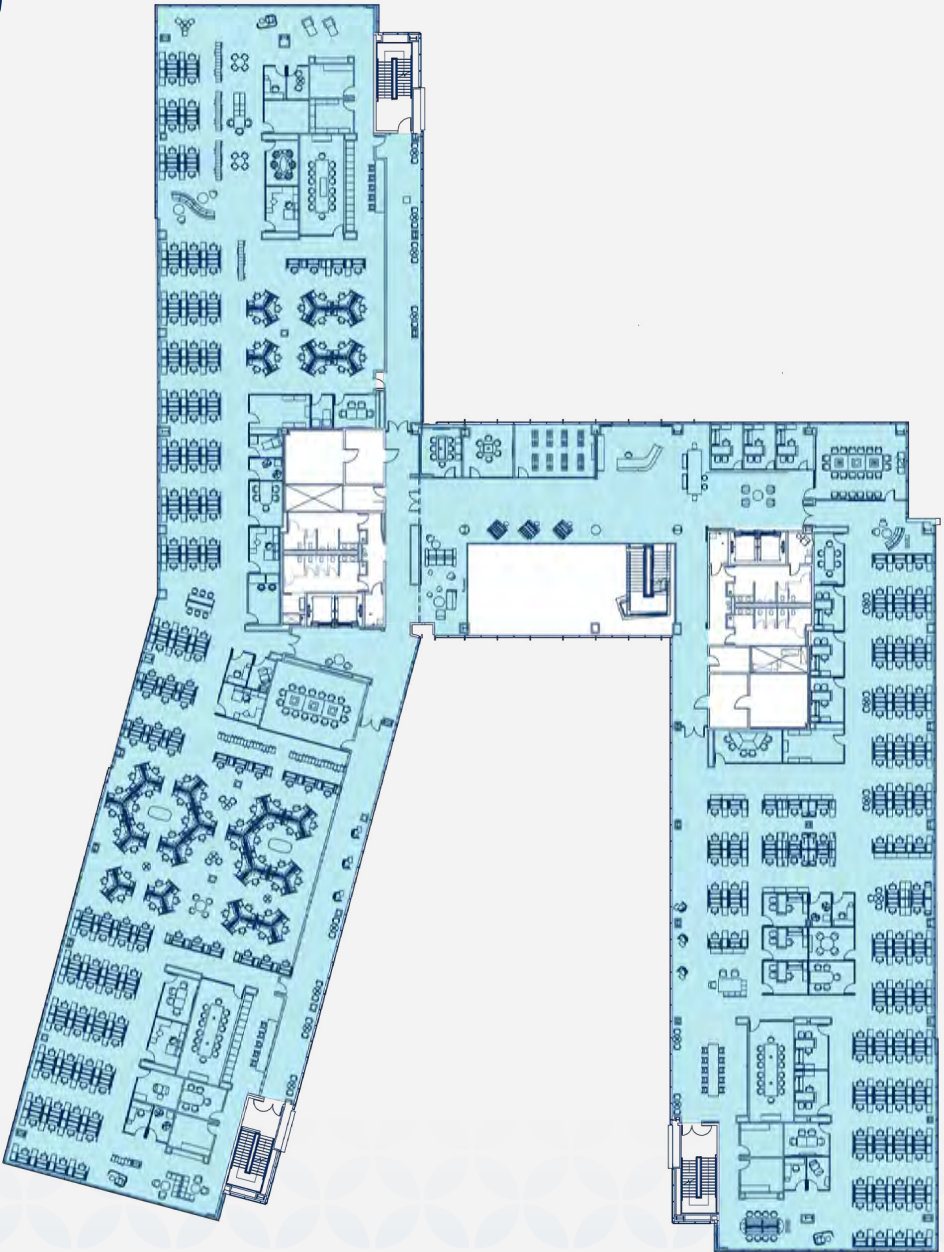
Suite 150

±14,880 RSF



Suite 200

±58,747 RSF



92

Desks



5

Private  
Offices



5

Meeting  
Rooms



1

All Hands/  
Training  
Room

Furniture and desk counts are approximate.



304

Desks



20

Private  
Offices



20

Meeting  
Rooms



5

Conference/  
Training  
Room

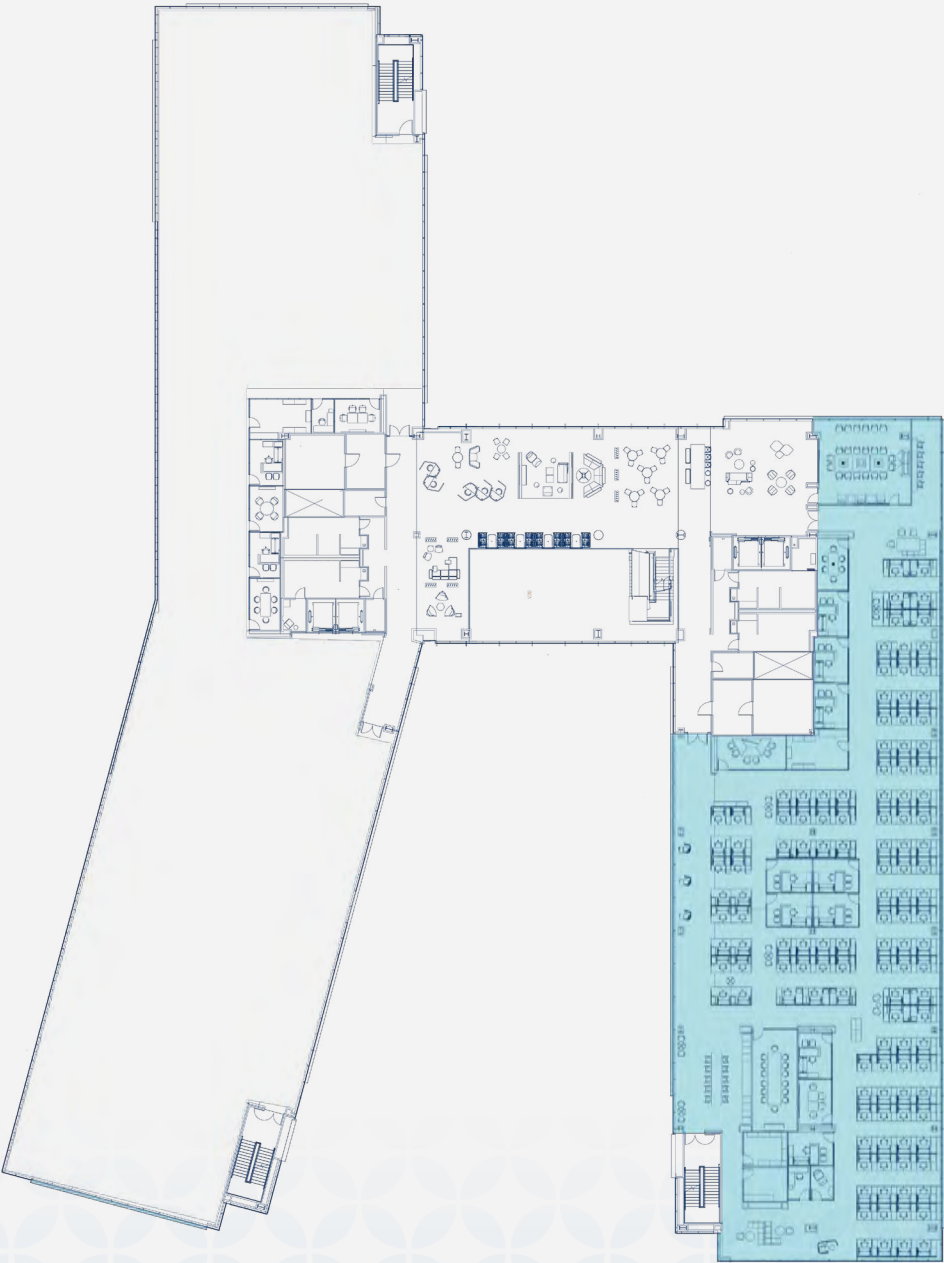
Furniture and desk counts are approximate.



FLOOR PLANS

Suite 350

±19,049 RSF



124

Desks



9

Private  
Offices



5

Meeting  
Rooms



2

Conference  
Rooms

Furniture and desk counts are approximate.









# Love where you work

**Roseville is packed with amenities.**  
Whether it's a breakfast meeting offsite, a Birthday lunch, a company happy hour, dinner with a client, last minute shopping, or a fun team bonding activity, you can find what you're looking for in the neighborhood.

## Shopping

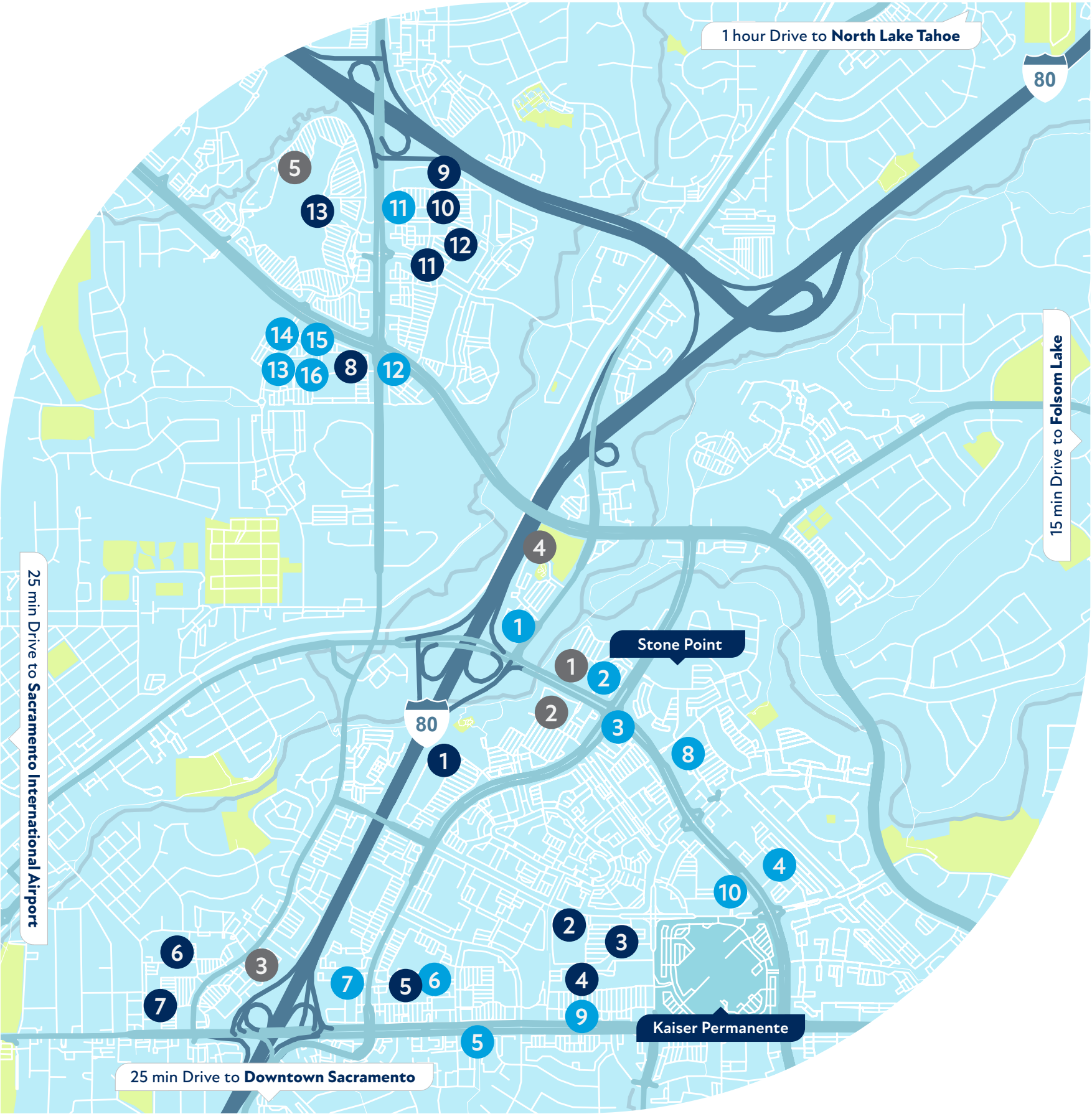
- 1 The Home Depot
- 2 Walmart Supercenter
- 3 Target
- 4 Raley's
- 5 Office Depot
- 6 Trader Joe's
- 7 Rite Aid Pharmacy
- 8 Whole Foods Market
- 9 Best Buy
- 10 Costco Wholesale
- 11 REI
- 12 Nordstrom Rack
- 13 Westfield Galleria

## Entertainment

- 1 Regal UA Olympus Pointe
- 2 Sky Zone Trampoline Park
- 3 iFLY Indoor Skydiving
- 4 Roseville Golfand Sunsplash
- 5 Cinemark Roseville Galleria Mall and XD

## Restaurants

- 1 In-N-Out Burger
- 2 Chicago Fire
- 3 Galpão Gaucho Brazilian Steakhouse
- 4 Mikuni | Roseville
- 5 The Original Mels Diner
- 6 Thai Basil Restaurant
- 7 Squeeze Burger
- 8 Brickyard Kitchen & Bar
- 9 Panera Bread
- 10 University of Beer - Roseville
- 11 Raising Cane's Chicken Fingers
- 12 BJ's Restaurant & Brewhouse
- 13 Dave & Buster's Roseville
- 14 Yard House
- 15 Pressed
- 16 Nick The Greek





# WHY ROSEVILLE?



**154,635**  
Population



**37.8**  
Median Age Range



**45%**  
Bachelor's/Graduate/  
Professional Degree



**74.4%**  
White Collar Work Force



**\$109,018**  
Median Household Income



**23%**  
Population Growth since 2010



**21%**  
Housing Growth since 2010

ROSEVILLE

SACRAMENTO  
DOWNTOWN



25 MIN DRIVE

20 MIN AMTRAK

25 MIN DRIVE







OFFICES AT  
**StonePoint**



**Bernardo Hubbard**  
bernardo.hubbard@jll.com  
+1 916 491 4322  
Lisc # 02140127

**Howard Hughes**  
howard.hughes@jll.com  
+1 916 491 4335  
Lisc # 01026782



Although information has been obtained from sources deemed reliable, neither Owner nor JLL makes any guarantees, warranties or representations, express or implied, as to the completeness or accuracy as to the information contained herein. Any projections, opinions, assumptions or estimates used are for example only. There may be differences between projected and actual results, and those differences may be material. The Property may be withdrawn without notice. Neither Owner nor JLL accepts any liability for any loss or damage suffered by any party resulting from reliance on this information. If the recipient of this information has signed a confidentiality agreement regarding this matter, this information is subject to the terms of that agreement. ©2023. Jones Lang LaSalle IP, Inc. All rights reserved. \*\*The outbreak of the COVID-19 virus (novel coronavirus) since the end of January 2020 has resulted in market uncertainty and volatility. While the economic impact of a contagion disease generally arises from the uncertainty and loss of consumer confidence, its impact on real estate values is unknown at this stage.