

# 1507

E. MARCH LANE , SUITE B | STOCKTON, CALIFORNIA



**MEDICAL / PROFESSIONAL OFFICE FOR LEASE**

**RANDY BREKKE** DRE# 00856863

Office 209.571.7230 | Cell 209.606.0044 | [randy@brekkere.com](mailto:randy@brekkere.com)

**BREKKE REAL ESTATE** DRE# 01208688

1500 Standiford Ave., Bldg. D | Modesto, CA 95350 | [www.brekkere.com](http://www.brekkere.com)

The information above has been obtained from sources believed reliable. While we do not doubt its accuracy, we have not verified it and make no guaranty, representation or warranty about it. It is your responsibility to independently confirm its accuracy and completeness. Any assumptions, estimates or projections used are for example only and do not represent the current or future performance of the property. You are advised to consult independent advisors as to value, tax factors, financial and legal matters in determining the suitability of the property for your needs.



# MEDICAL / PROFESSIONAL OFFICE FOR LEASE

1507 E. March Lane, Suite B • Stockton, California

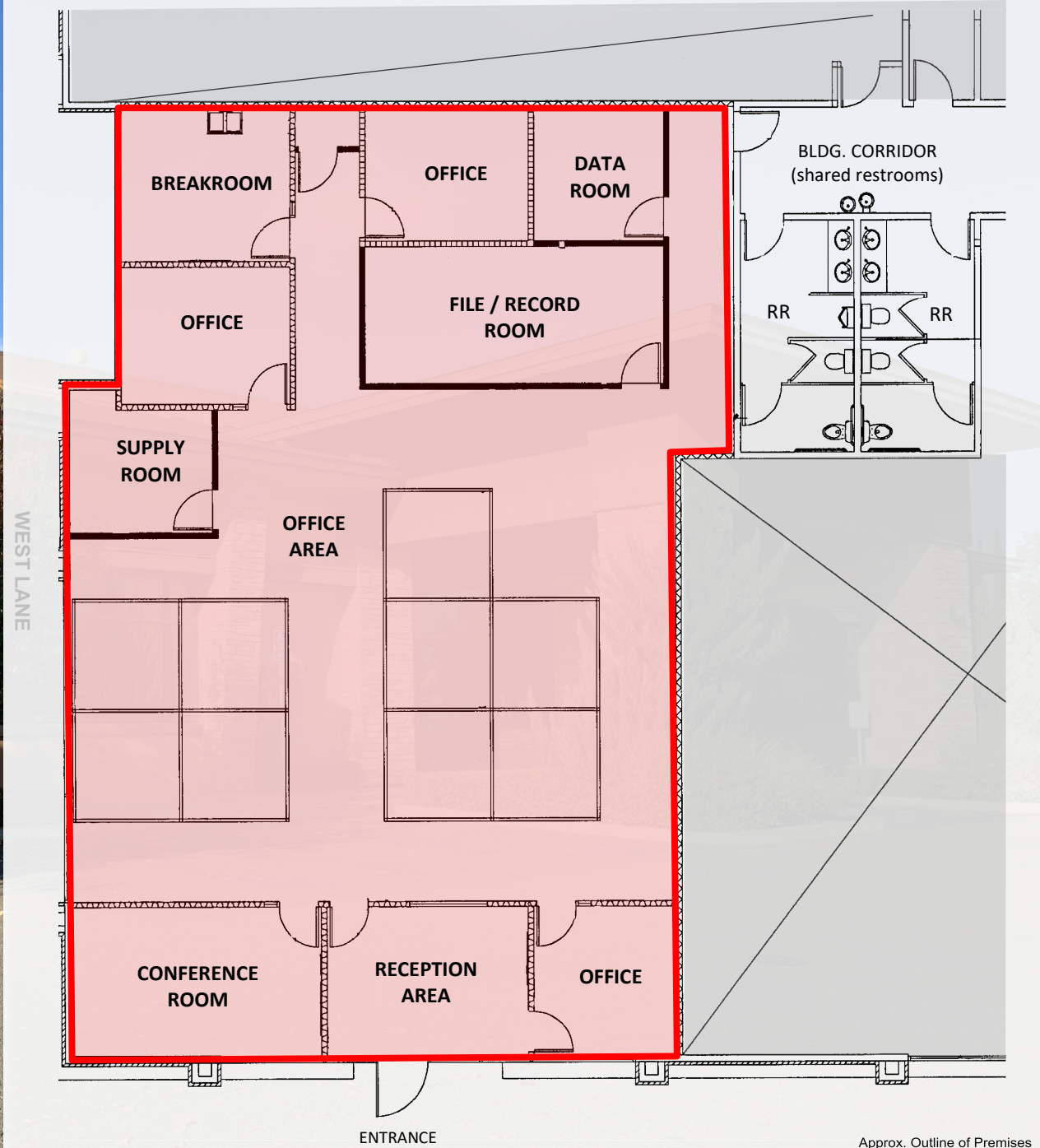


- Prime location with street frontage
- Contemporary design
- Newer construction & high quality finishes
- Within Master-Planned Office Park
- Generous & convenient parking
- Signalized intersection
- Busy commercial area of Stockton
- Co-tenants include: Advanced Dermatology, Dental Surgery Center, DaVita Dialysis, SJ County Rehabilitation Dept., Focus Health, The Bone Store, AIM Higher & more

## SUITE DETAILS & FEATURES

- Suite B: 3,375<sup>±</sup> sf
- \$1.70 per sf / mo. (NNN)
- Main lobby & entrance door signage
- Available August 2024
- Visible from West Lane
- Ample parking (5/1,000 sf)
- Shared restrooms w/ other tenants
- Former DMV office
- Suite Layout Includes:
  - 3 Private offices
  - Large open office area
  - Supply Room
  - Data Room
  - File / Record Room
  - Conference Room
  - Reception Area
  - Employee breakroom

*\*Do Not Disturb Tenant; Contact Agent for Access*



**RANDY BREKKE** DRE# 00856863

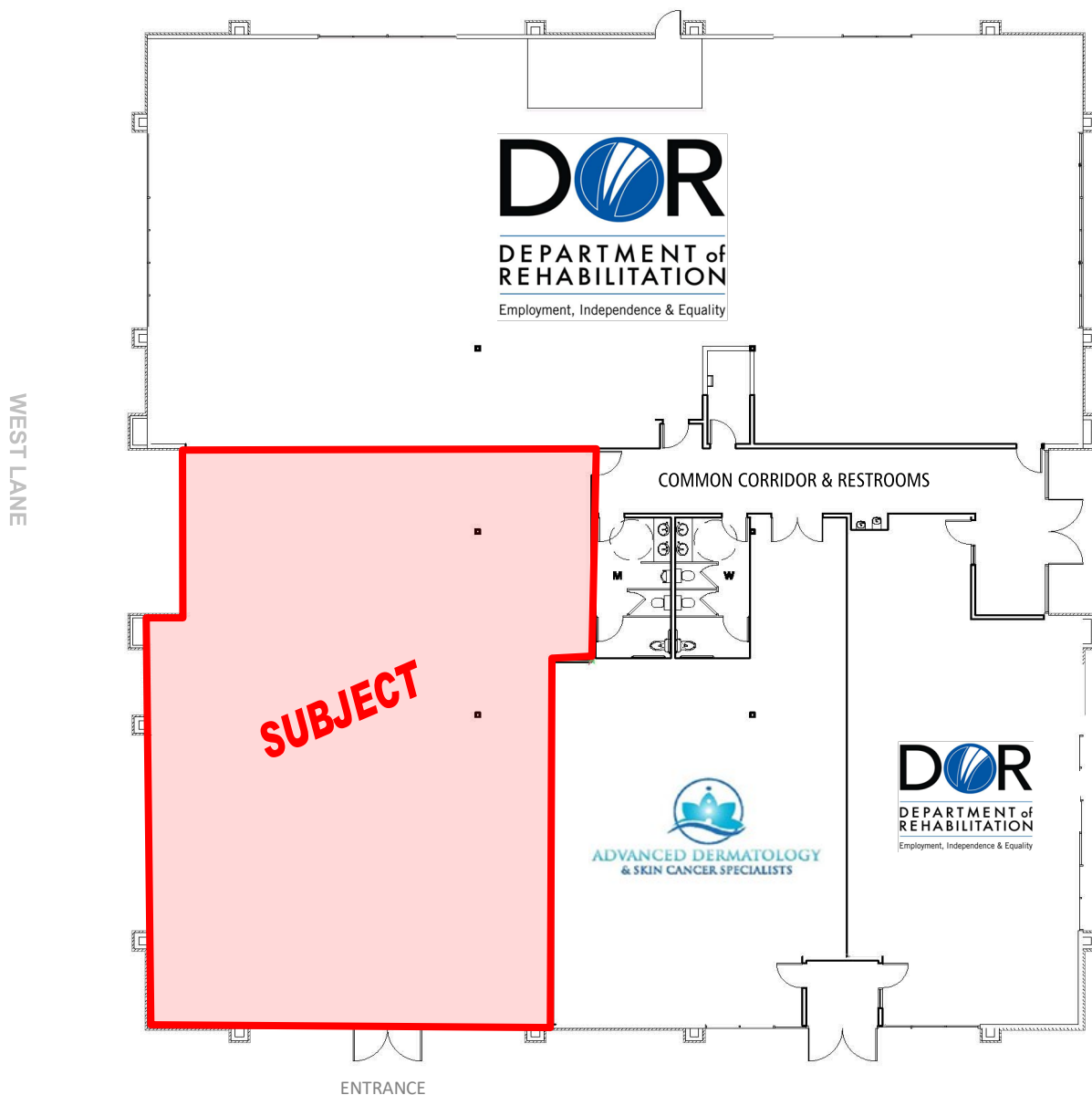
Office 209.571.7230 | Cell 209.606.0044 | [randy@brekkere.com](mailto:randy@brekkere.com)

**BREKKE REAL ESTATE** DRE# 01208688

1500 Standiford Ave., Bldg. D | Modesto, CA 95350 | [www.brekkere.com](http://www.brekkere.com)



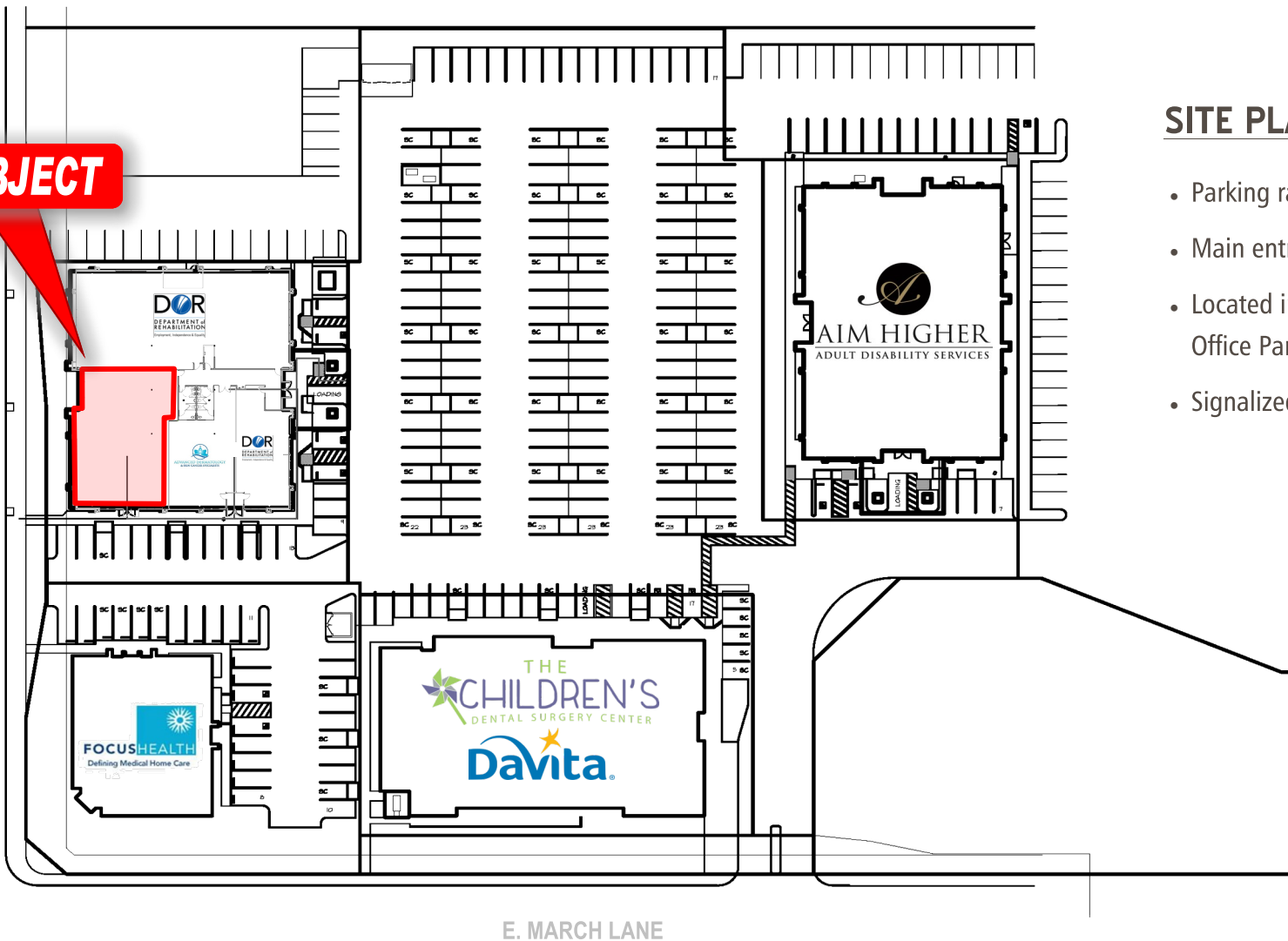
The information above has been obtained from sources believed reliable. While we do not doubt its accuracy, we have not verified it and make no guaranty, representation or warranty about it. It is your responsibility to independently confirm its accuracy and completeness. Any assumptions, estimates or projections used are for example only and do not represent the current or future performance of the property. You are advised to consult independent advisors as to value, tax factors, financial and legal matters in determining the suitability of the property for your needs.



Approx. Outline of Premises

**SUBJECT**

WEST LANE



## SITE PLAN

- Parking ratio: 5/1,000 sf
- Main entry/exit from E. March
- Located in Master Planned Office Park
- Signalized intersection

Approx. Outline of Premises

**RANDY BREKKE** DRE# 00856863

Office 209.571.7230 | Cell 209.606.0044 | randy@brekkere.com

**BREKKE REAL ESTATE** DRE# 01208688

1500 Standiford Ave., Bldg. D | Modesto, CA 95350 | www.brekkere.com

The information above has been obtained from sources believed reliable. While we do not doubt its accuracy, we have not verified it and make no guaranty, representation or warranty about it. It is your responsibility to independently confirm its accuracy and completeness. Any assumptions, estimates or projections used are for example only and do not represent the current or future performance of the property. You are advised to consult independent advisors as to value, tax factors, financial and legal matters in determining the suitability of the property for your needs.





**RANDY BREKKE** DRE# 00856863

Office 209.571.7230 | Cell 209.606.0044 | randy@brekkere.com

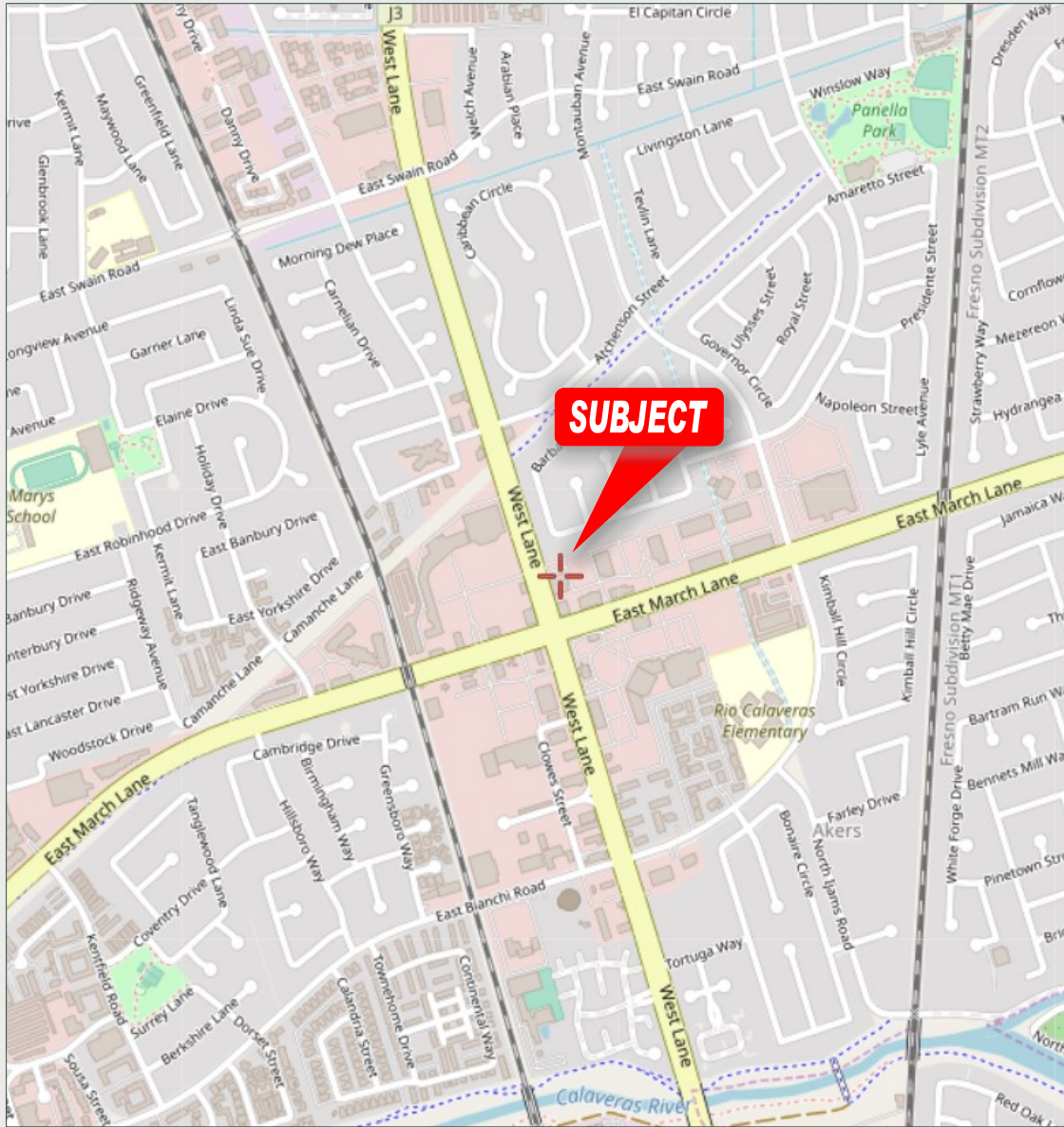
**BREKKE REAL ESTATE** DRE# 01208688

1500 Standiford Ave., Bldg. D | Modesto, CA 95350 | www.brekkere.com

The information above has been obtained from sources believed reliable. While we do not doubt its accuracy, we have not verified it and make no guaranty, representation or warranty about it. It is your responsibility to independently confirm its accuracy and completeness. Any assumptions, estimates or projections used are for example only and do not represent the current or future performance of the property. You are advised to consult independent advisors as to value, tax factors, financial and legal matters in determining the suitability of the property for your needs.



## LOCATION MAP



## MAP OF CENTRAL VALLEY



### POPULATION

City of Stockton - 321,819

San Joaquin County - 793,229

### DISTANCES

To Hwy 99 .....	6 Miles
To Manteca .....	17 Miles
To Modesto .....	33 Miles
To Sacramento .....	46 Miles
To San Francisco .....	89 Miles
To Fresno .....	128 Miles

**RANDY BREKKE** DRE# 00856863

Office 209.571.7230 | Cell 209.606.0044 | randy@brekkere.com

**BREKKE REAL ESTATE** DRE# 01208688

1500 Standiford Ave., Bldg. D | Modesto, CA 95350 | www.brekkere.com



The information above has been obtained from sources believed reliable. While we do not doubt its accuracy, we have not verified it and make no guaranty, representation or warranty about it. It is your responsibility to independently confirm its accuracy and completeness. Any assumptions, estimates or projections used are for example only and do not represent the current or future performance of the property. You are advised to consult independent advisors as to value, tax factors, financial and legal matters in determining the suitability of the property for your needs.