

W
2901
WILSHIRE

CBRE



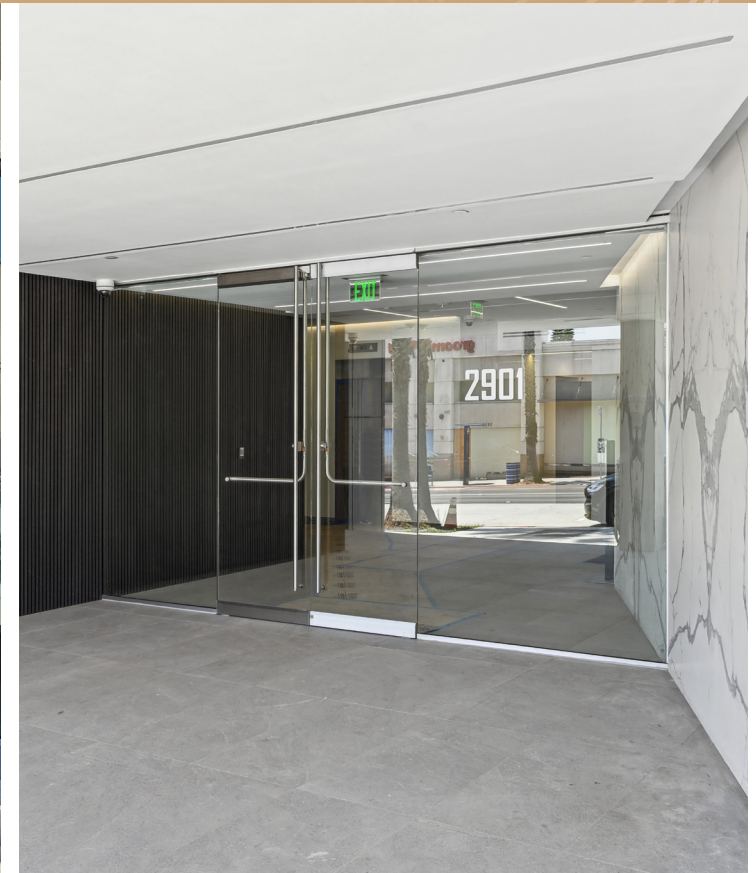
FOR LEASE

INTERIOR / LOBBY

THE VIEW

Enjoy convenience and accessibility with a front row seat to Wilshire Boulevard.

You'll find key sites like Providence St. John's and UCLA Medical Center nearby, while the I-405 and I-10 freeways keep you plugged in to the surrounding communities. Large-scale renovations launched by new ownership set the building apart with a uniquely modern and future-proofed space. Rest assured, the best is yet to come.



EXTERIOR

NORTHWEST



FEATURES



Great street visibility on
Wilshire Boulevard



New, dedicated
ownership



Large blocks of contiguous
space and full floor
availability



Major building renovations
underway



All suites equipped with a
dedicated HVAC unit



Conveniently located
near the 405 FWY
and 10 FWY



In close proximity to
Providence St. John's and
UCLA Medical Center



Valet parking
available

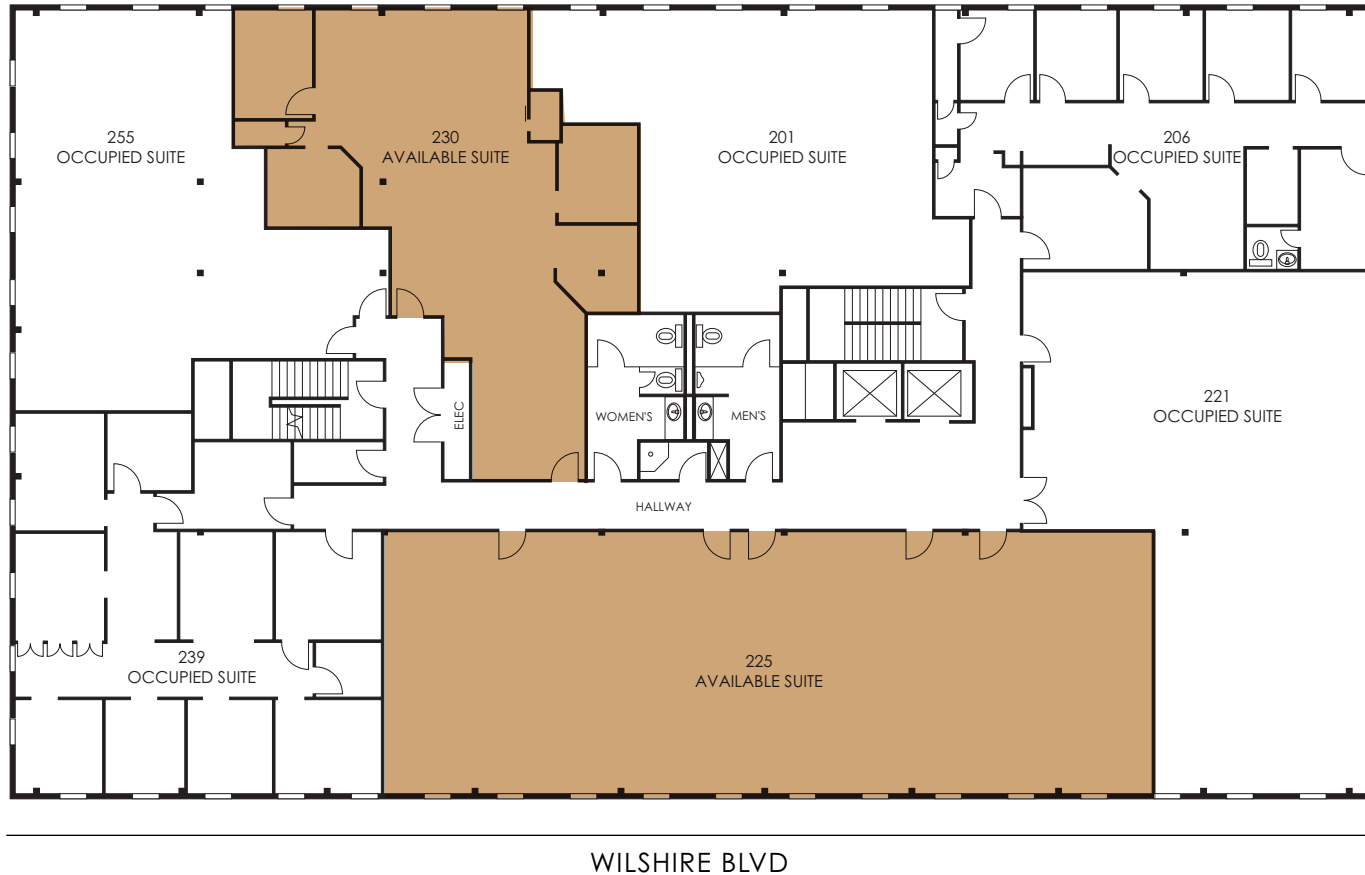




LOCATION

Santa Monica's central location along
with its beautiful beaches and temperate weather
have fueled its economic growth leading to the
development of active commercial districts, affluent
neighborhoods and rich cultural resources.

FLOOR 2



SUITE 225: ±2,841 RSF

SUITE 230: ±1,672 RSF

TOTAL AVAILABLE: ±4,513 RSF



ANGIE WEBER

Lic. 01015031

+1 818 502 6750

angie.weber@cbre.com

DANA NIALIS

Lic. 01947265

+1 818 502 6774

dana.nialis@cbre.com

CBRE

© 2024 CBRE, Inc. All rights reserved. This information has been obtained from sources believed reliable, but has not been verified for accuracy or completeness. You should conduct a careful, independent investigation of the property and verify all information. Any reliance on this information is solely at your own risk. CBRE and the CBRE logo are service marks of CBRE, Inc. All other marks displayed on this document are the property of their respective owners, and the use of such logos does not imply any affiliation with or endorsement of CBRE. Photos herein are the property of their respective owners. Use of these images without the express written consent of the owner is prohibited.