

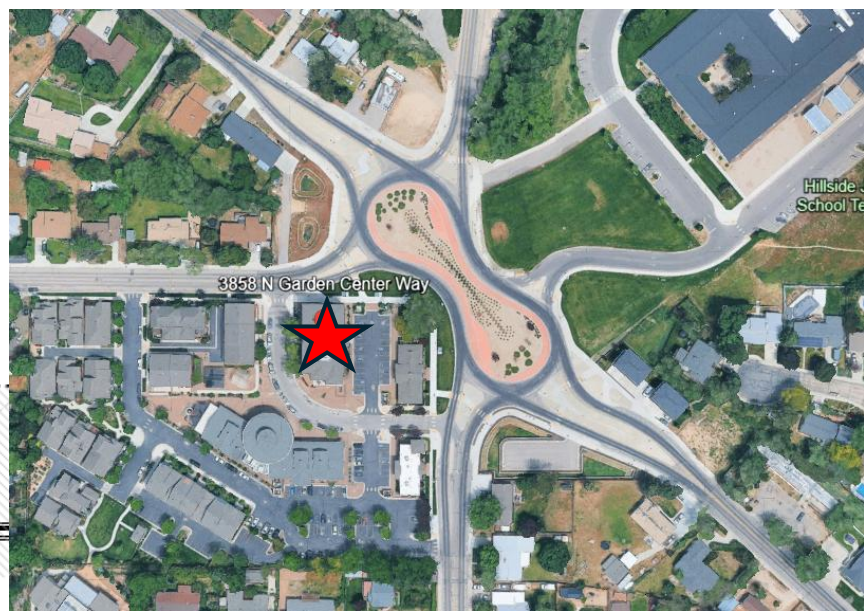
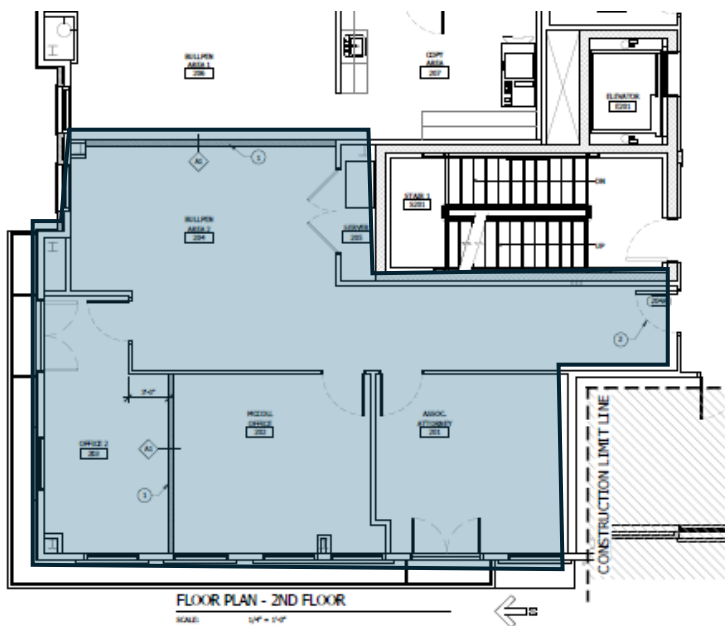
36TH STREET GARDEN PLAZA BUILDING

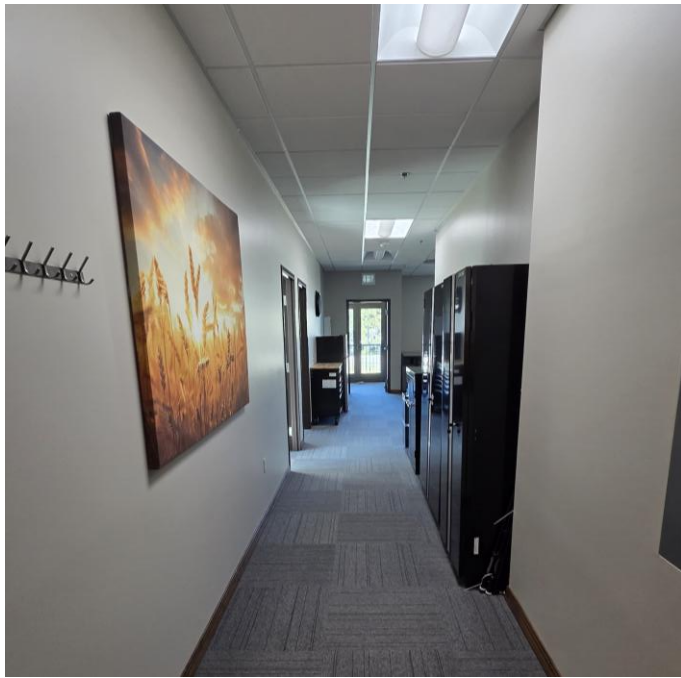
3858 N Garden Center Way, Suite 203

Boise, Idaho 83703



2nd FLOOR OFFICE SPACE FOR LEASE
1,205sf with 2 large executive offices, a small corner office & large bullpen area located on the NW side of the building.





\$22/SF, FSEJ
Immediate Availability,
Desirable Hill Road Location,
Keyless Entry,
Plenty of Parking,
Quiet Professional Neighbors,
And 2 Separate Balconies.



**For additional
information
please contact
Dave McKinnon
208-631-5289
Dmckinnon@tertco.com**