

356 E 1ST STREET, 2ND FLOOR
LOS ANGELES, CA 90012



COMMERCIAL
ASSET GROUP

THE
PUBLIC
IZAKAYA

JAPANESE VILLAGE PLAZA OFFICE/
RETAIL/SHOWROOM SPACE FOR LEASE

AVAILABLE

±9,128 SF

TIMING

IMMEDIATELY

RENTAL RATE

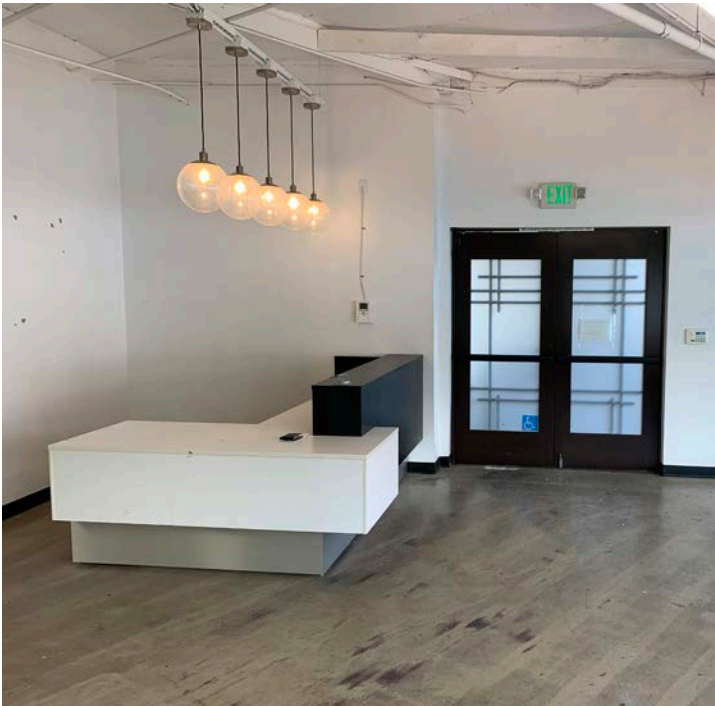
\$2.00 PSF,
MG BASE YEAR

PARKING

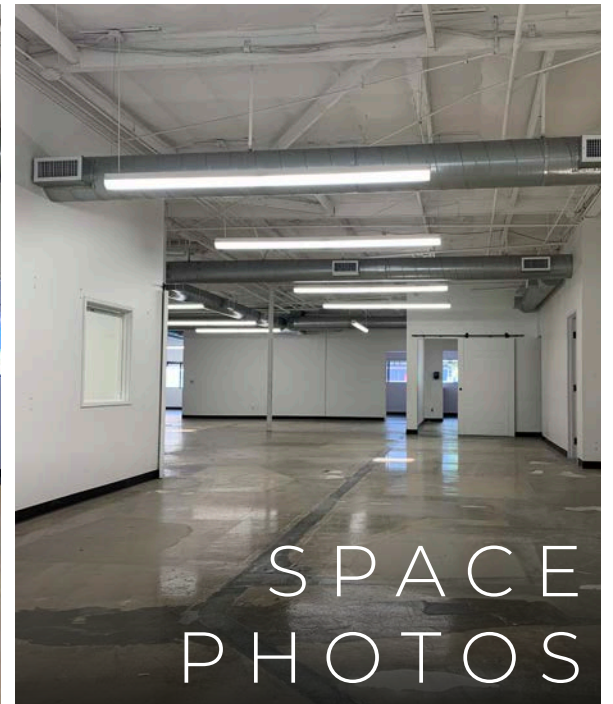
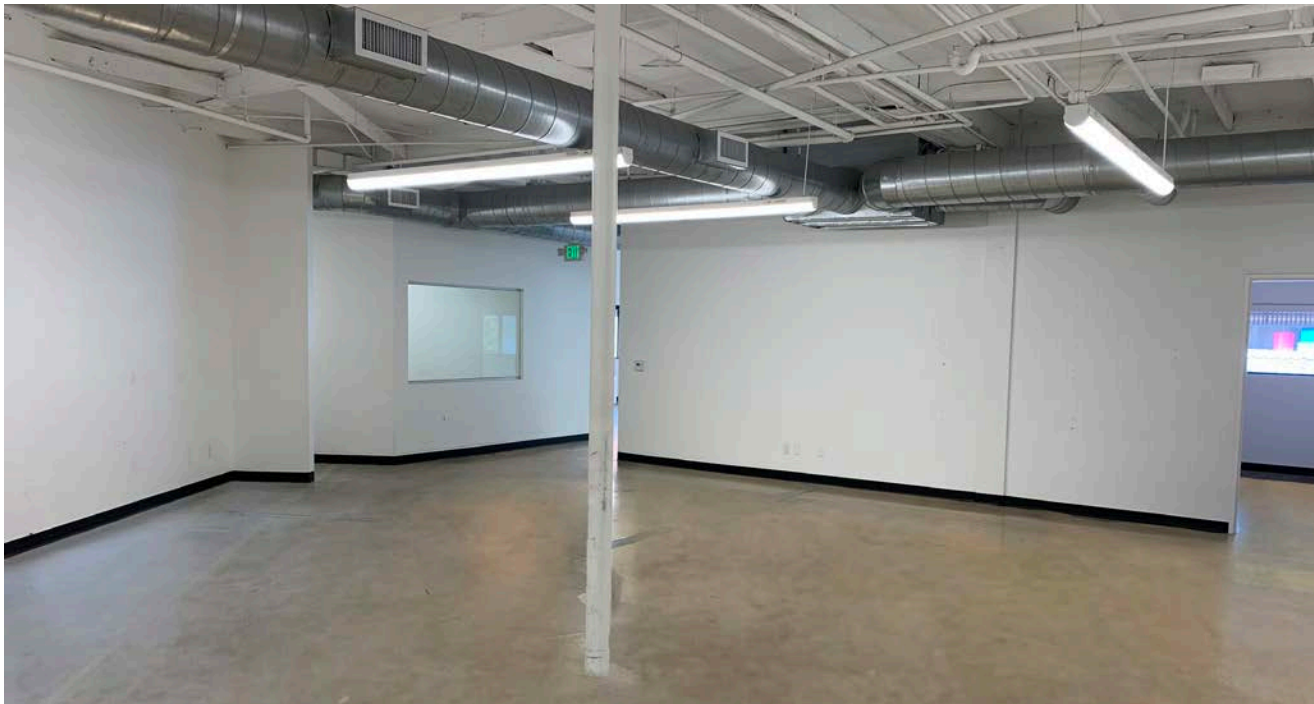
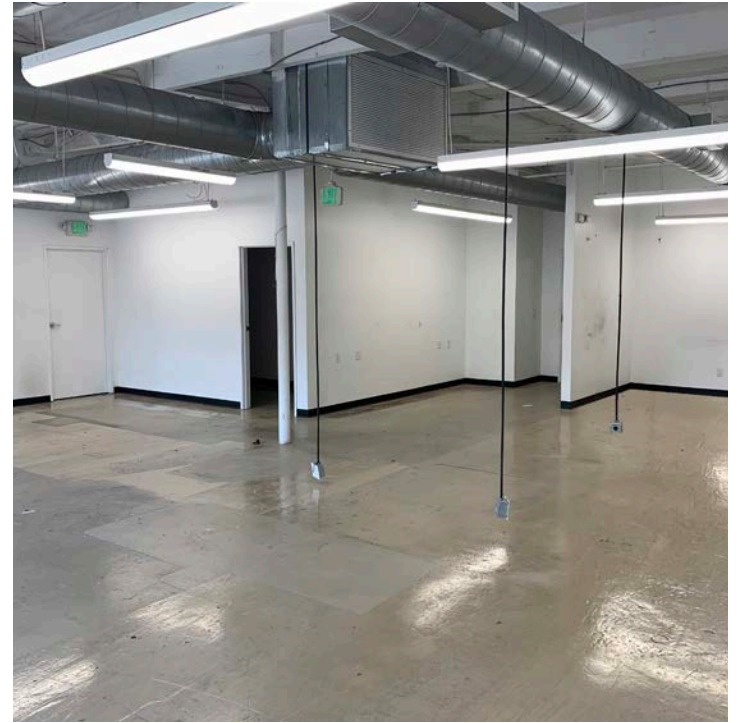
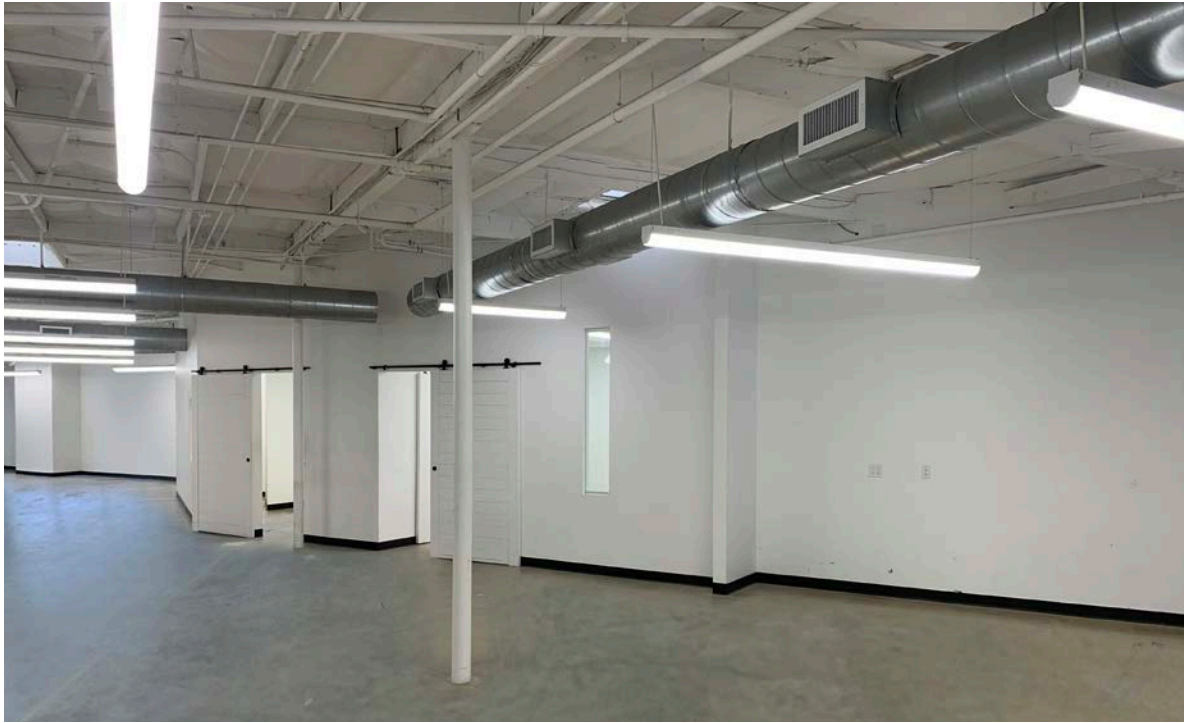
LARGE ONSITE
PARKING
STRUCTURE
WITH SPACES
FOR RENT

These materials are based on information and content provided by others, which we believe are accurate. No guarantee, warranty or representation is made by Commercial Asset Group, Inc. or its personnel. All interested parties must independently verify accuracy and completeness. As well, any projections, assumptions, opinion, or estimates are used for example only and do not represent the current or future performance of the identified property. Your tax, financial, legal and toxic substance advisors should conduct a careful investigation of the property and its suitability for your needs, including land use limitations. The property is subject to prior lease, sale, change in price, or withdrawal from the market without notice.

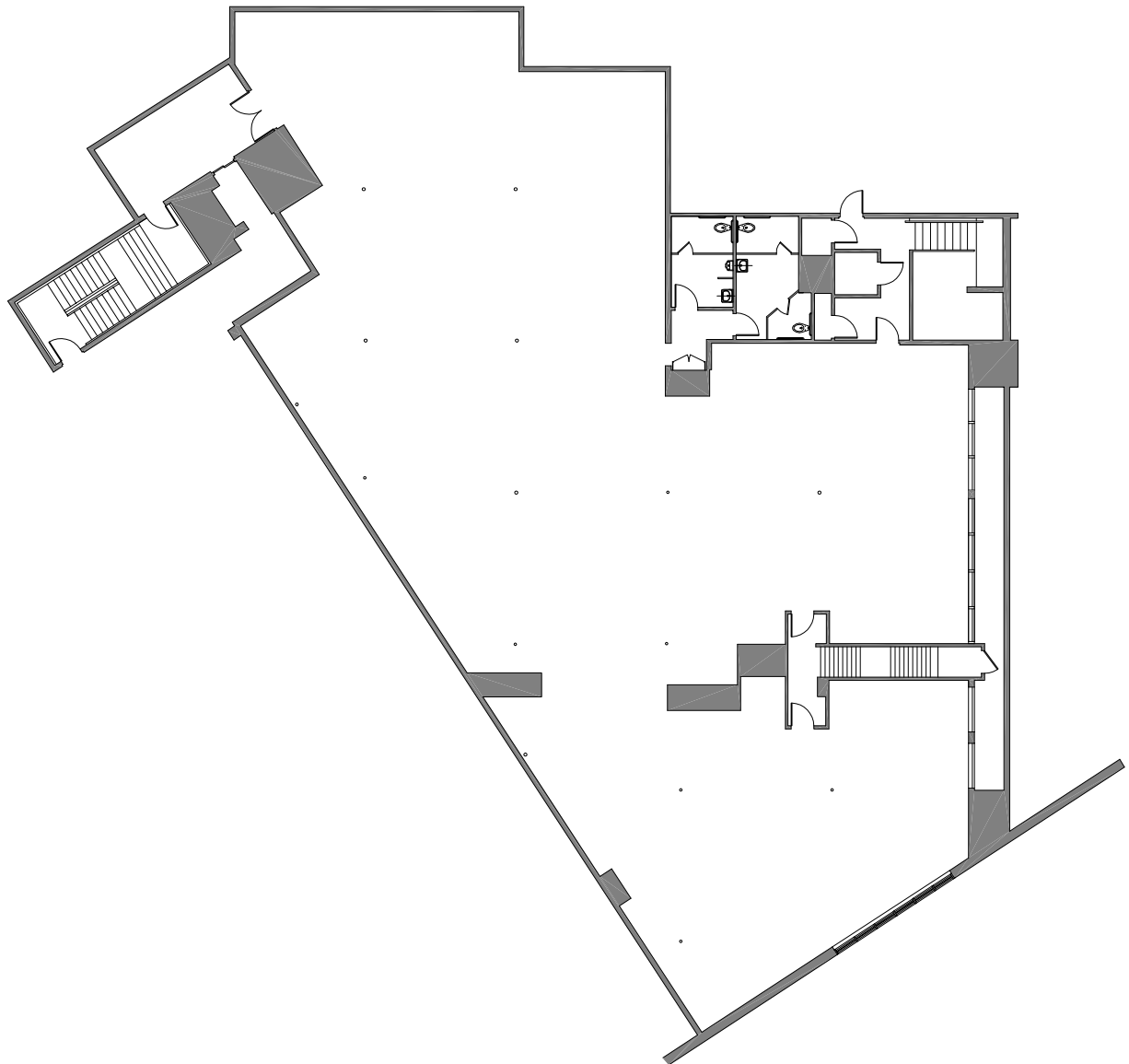
- 6 PRIVATE OFFICES + 2 CONFERENCE ROOMS
- TURN KEY LITTLE TOKYO OFFICE SPACE-RECENTLY RENOVATED
- LOCATED IN JAPANESE VILLAGE PLAZA-HOME TO AMAZING RESTAURANTS, CAFÉ'S, A SMALL MARKET AND NUMEROUS OTHER AMENITIES
- STEPS FROM THE METRO STATION
- 24 HOUR ONSITE SECURITY
- ABUNDANT ONSITE PARKING FOR LEASE
- COMBINATION OF PRIVATE OFFICES AND OPEN SPACE



SPACE PHOTOS



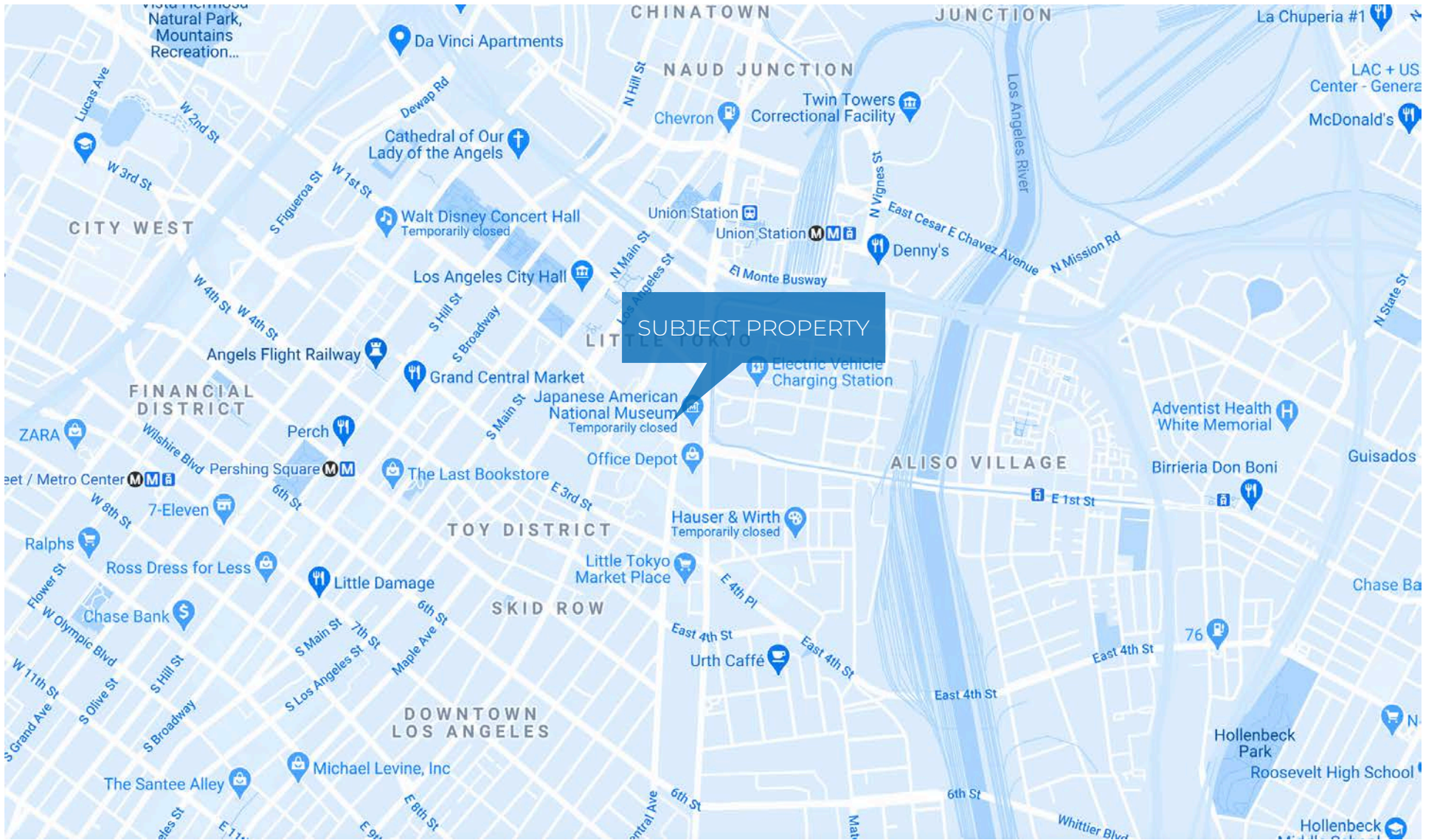
SPACE
PHOTOS



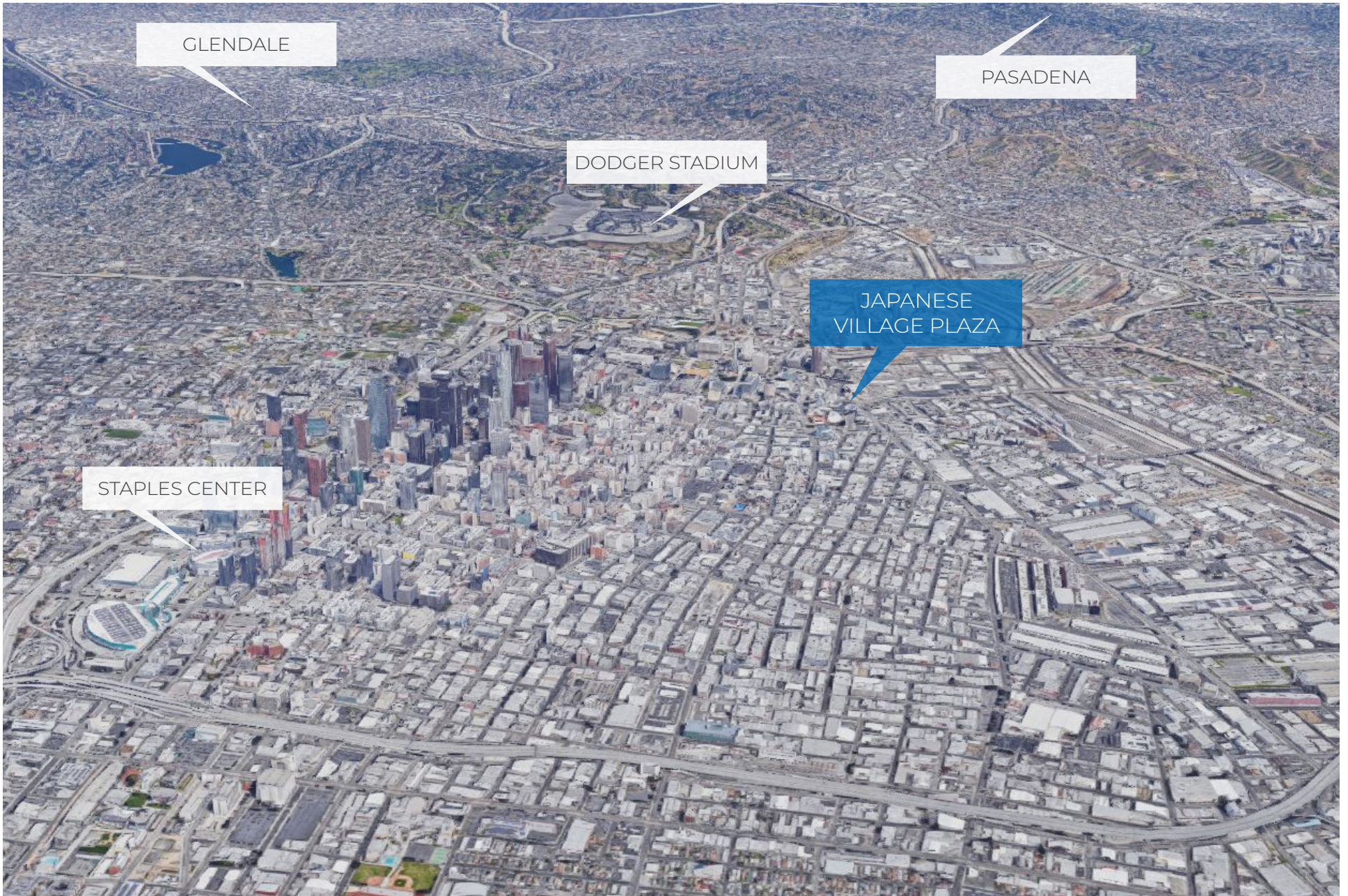
E 1ST STREET

S CENTRAL AVE

FLOOR PLAN



MAP



GLENDALE

PASADENA

DODGER STADIUM

JAPANESE
VILLAGE PLAZA

STAPLES CENTER

AERIAL

DAVID ICKOVICS

PRINCIPAL
P 310.272.7380
E DJI@CAG-RE.COM
LIC. 01315424

DAVID ASCHKENASY

EXECUTIVE VICE PRESIDENT
P 310.272.7381
E DAVIDA@CAG-RE.COM
LIC. 01714442

SEAN STOCKBAUER

ASSOCIATE
P 310.272.7389
E SEAN@CAG-RE.COM
LIC. 02080476

COMMERCIAL ASSET GROUP

1801 CENTURY PARK EAST, STE 1550
LOS ANGELES, CA 90067
P 310.275.8222 F 310.275.8223
WWW.CAG-RE.COM LIC. 01876070



**COMMERCIAL
ASSET GROUP**